



NATIONAL AGROMETEOROLOGICAL ADVISORY SERVICE BULLETIN

10 June 2020 (WEDNESDAY)
[FOR THE PERIOD 10.06.2020 – 14.06.2020]



DISCLAIMER

Under the Agro-meteorological Information System Development Project, Agromet Advisory Service Bulletins at National & Sixty Four (64) districts have been prepared on experimental basis. These bulletins are being displayed through the website of Department of Agricultural Extension for valuable comments/ suggestions from all concerned.

Please Contact: Farhana Hoque, Sabuj Roy | E-mail: ntamsdp@dae.gov.bd
Phone No.: 02-55`028414, 02-55028418

ISSUED BY

Agro-Meteorological Information Systems
Development Project
Department of Agricultural Extension (DAE)
Ministry of Agriculture
In collaboration with Bangladesh
Meteorological Department

Salient Agromet Advisories

Salient Weather Conditions

In general, intensity of rainfall decreased considerably compared to last week and on the contrary maximum temperature was increased during last four days and the same is likely to increase during next five days. As per the weather forecast received from the Bangladesh Meteorological Department (BMD) during next 24 hours, light to moderate rain/thunder showers accompanied by temporary gusty/squally wind is likely to occur at many places over Chattogram, Barishal & Sylhet divisions; at a few places over Mymensingh, Dhaka & Khulna divisions and at one or two places over Rajshahi & Rangpur divisions with moderately heavy to heavy falls at isolated places over Chattogram & Sylhet divisions. Day and night temperature may remain nearly unchanged over the country. Mild heat wave is sweeping over the regions of Dhaka, Madaripur, Tangail, Feni, Chandpur, Sylhet, Rajshahi, Khulna, Patuakali and Satkhira and it may continue. As per the outlook issued by BMD for next 72 hours, Southwest monsoon may advance upto Chattogram & Sylhet divisions, Besides, as per the medium range weather forecast, still good amount of pre-monsoon rainfall is expected in number of districts in the country during next five days.

Outlook on River System & Flood Situation for Next 10 Days issued by Flood Forecasting and Warning Center, Bangladesh Water Development Board:

- Brahmaputra-Jamuna river system may continue to fall till June 15th and then rise afterwards. No probability of flooding is forecasted in Brahmaputra basin.
- Ganges-Padma River may steadily rise. No probability of flooding is forecasted in Ganges basin.
- Rivers around Dhaka city may remain steady. No probability of flooding is forecasted in the rivers around Dhaka city

Salient Agromet Advisories

Boro Paddy

Continue harvesting the matured crop on non rainy days or after the current spell of rainfall

- After the harvest, immediately keep it in safe and dry place for drying of grains.
- Complete harvesting as early as possible
- After harvesting, dry well the grains in sunny weather (12% moisture contain e.g teeth testing) and keep it shady condition for cooling and finally store it air tight container
- Hire the labour from the same village of cultivated land
- Maintain proper distance during harvesting.
- Harvested crop should immediately be transported to a safer place to avoid post-harvest loss considering the probability of rain during in coming days. Plough the field immediately after harvesting or sow the green manure crops.
- Drain out water from crop field 15 days before harvesting.

Aus Paddy

- Maintain in 3-4inches water level.
- Inspect & monitor disease-pest e.g blast, rice bug, stem borers and others and take appropriate plant protection measures

- After decrease in water level from aus paddy field, apply potash fertilizer as top dress by filling gap after 5-7 days and also urea fertilizer after 3-5 days. Urea fertilizer should not be applied if the paddy is in early tillering stage. After 5-7 days, if necessary, urea fertilizer should be applied by breaking the tillers and filling the gap. At this time, it is better to use additional 5 kg of potash fertilizer per bigha in all types of aus paddy fields.
- If the population of Thrips and Green Leaf Hopper exceeds 25%, apply Malathion group insecticide at the rate of 1ml/1 litre of water.

Maize:

Silk stage (Kharif 1)

- Comb & grain rot, stem rot and others disease-pest may infest in crop land, Inspect crop land regularly. Drain out excess water from the crop land as maize cannot withstand waterlogging.
- Monitor the crop against attack of insect pests, ∞ Intercropping with legumes & cassava can reduce the incidence of stem borer infestation.
- Arrange for adequate drainage to avoid water stagnation in the crop fields. Drain out excess water from the fields. Avoid irrigation, intercultural operation and application of plant protection measures and fertilizers to the standing crops. Harvest the matured crop immediately and store the harvested products at safe places

Groundnut

- Drain out excess water, if any, from the land.
- Harvest the matured crop on non rainy days
- Monitor the incidences of pests (hairy caterpillar, jassid, thrips, leaf miner, spodoptera & termite) & diseases (leaf spot/tikka disease, leaf rust, foot rot/stem rot, collar rot, bud necrosis) and if noticed, take appropriate preventive measure.
- Prevailing weather condition are favorable for tikka leafspot in groundnut. To control spray with hexaconazol @2ml. or carbendazim @1 g. per litre of water.

Vegetables

- Hand pollination is effective for more production in case of tassel gourd and pointed gourd. Moreover, advised to cut aged leaves and continue others intercultural operations in vegetables land.
- Wash away sticky mud from base and stems of vegetable plants by spraying fresh water; to prevent rotting, spray Copper hydroxide or copper oxychloride@4g per litre of water. Staking of bamboo should be provided to crops like tomato, chilli and brinjal for better support.
- Arrange for adequate drainage to avoid water stagnation in the crop fields. Drain out excess water from the fields. Avoid irrigation, intercultural operation and application of plant protection measures and fertilizers to the standing crops. Harvest the matured crop immediately and store the harvested products at safe places.

Horticulture

- Weather is congenial for sigatoka leaf spot disease in banana; cut and remove all severely affected leaves and spray Propiconazol 1ml/ litre of water. Weather is congenial for burrowing nematode in banana; apply neem cake (1 kg/plant) at the time of planting to reduce the pest population. Store the harvested banana bunches in dry places to prevent disease incidence due to rainfall.
- Provide mechanical support to banana, young fruit plants and vegetables and carry out propping up in sugarcane to prevent the crops from lodging due to strong winds. Keep harvested produce at safer places. Keep cattle/goats indoor during thunderstorm/dust storm.
- Weather is congenial for bud rot disease in coconut; spray 1% Bordeaux mixture on the spindle leaf and crown of palms. Make provisions for small drains at required interval in the orchards to drain out excess water.

Jute:

- Keep the jute land weed free by weeding and uproot comparatively under growth plant during the time.
- There is a chance of incidences of Semilooper. Spray Imidocholoprid/Chlorocyryn/ Nitro @ 1ml/litre of water. Semilooper and mites may infest in drought and humid weather and so placing 10-12 bamboo sticks/ plant branch @33 decimal land for controlling insects as environment friendly way. Besides, inspect the land regularly.
- Drain out excess water from the fields
- It is now in vegetative stage. Monitor the pest & diseases incidences and take appropriate measures.
- To protect capsularis jute crop (>4 ft tall) from lodging due high wind speed, the peripheral jute plants (round the field) need to be tied together by taking 4-5 jute plants in a consecutive manner.
- There is a chance of incidences of Hairy Caterpillar. Following control measures is advised.
- Collect the egg mass and destroy
- Use light traps.
- Spray Imidocholoprid/Chlorocyryn/ Nitro @ 1ml/litre of water.
- There is a chance of incidences of Semilooper. Spray Imidocholoprid/Chlorocyryn/ Nitro @ 1ml/litre of water.

Betel vine:

- At Leaf growing stage the fencing and structure of betel vine garden broken due to “strong wind. Repair the structure as early as possible and if required took down the creeper from the structure.
- Wet the plant and the base soil with copper oxychloride solution --Spray 1% Bordeaux mixture at the base.
- Intercultural operations need to continue as others month.
- Hail storm and western storm may be possible at this time, so special care should be given for beetle leaves

Sugarcane-

- During the month, sugarcane plant. in grand growth stage
- Cultivated summer pulse crops, leafy vegetables need to be harvested in the sugarcane field as relay/inters cropping.

- In this time, stem rot and stem borer and others disease-pest may infest the crop and so inspect the land regularly and take appropriate plant protection measure.
-

Livestock

- During the month, cattle vaccination need to be provided for controlling Anthrax and HS (Hemorrhagic septicemia) disease (not disease cattle). In this time, mosquito infestation may increase and advised for arranging curtain. Regular bathing the cattle while increasing hot weather.
- Provide supplemental feed of minerals and vitamin mixture farm animals; carry out proper deworming schedule and vaccination schedule against FMD.
- Keep the cattle under shed during heavy rainfall. Keep the animals in dry and high (raised platform) places. Take proper care of the shelters and look out for any possible outbreak of diseases of livestock. Do not let the animals outside during thundershower. Avoid water logging of floor of the animal house.
- Allow the animals in the ponds or wash the animals 2-3 times in a day with cold water. Vaccinate the animals before onset of monsoon against foot and mouth disease (FMD vaccination), BC vaccination against Black Quarter and also vaccinate against Haemorrhagic Septcaemia. Vaccinate (ET vaccine) sheep and goats against Enterotoximia before onset of monsoon.

Poultry

- Chicken may be affected water pox, typhoid and so providing required vaccinations regularly.
- Hang gunny bags in and around poultry shed to protect birds from high temperature; provide birds a well-balanced feed fortified with minerals, vitamins and amino acid supplements. due to increase in temperature, provide cool water for poultry birds. Add electrolytes (KCl, NaCl and NaCO₃) in feed and water.

Fishery

- Raise the pond specially nursery pond dyke to avoid submerge during flood. Take preparation like brood fish, necessary hormones and equipment for fish reproduction. Apply liming (1kg/decimal land) excavated waterbody during the month. Moreover, apply 10 kg cow dung, 200gm urea, 100 TSP by mixing with water for one decimal pond area, Continue intercultural operation and irrigation on dyke gardening. In addition to keep in touch with local fisheries office for more information.
- Repair damaged dykes of fisheries ponds and take care so that fishes do not escape. Maintain outlet pipe from the pond so that excess water pass away and the water level is maintaining. Avoid fishing operations in the river. Movement in boat and motor boats is not advisable

Realized Weather at different locations in the country

Rainfall for last 24 hours (till 06 AM on 10 June 2020) and maximum temperature on 09 June, minimum temperature on 10 June 2020 is given below:

Name of Divisions	Name of Stations	Rain fall (mm)	Max. Temp (°C)	Min. Temp (°C)	Name of Divisions	Name of Stations	Rain fall (mm)	Max. Temp (°C)	Min. Temp (°C)
Dhaka	Dhaka	05	<u>36.5</u>	26.3	Rajshahi	Rajshahi	00	36.0	27.1
	Tangail	39	36.0	<u>24.0</u>		Ishurdi	36	35.2	25.3
	Faridpur	01	35.4	25.9		Bogura	00	35.5	28.5
	Madaripur	00	36.0	27.1		Badalgachhi	00	35.6	28.5
	Gopalganj	00	35.5	25.2		Tarash	05	35.0	24.2
	Nikli	04	34.5	25.5					
Mymensingh	Mymensingh	00	<u>36.5</u>	27.2	Rangpur	Rangpur	00	35.6	26.6
	Netrokona	00	35.7	27.5		Dinajpur	00	35.5	27.7
						Sayedpur	00	35.9	27.1
Chattogram	Chattogram	Trace	32.2	27.5		Tetulia	00	34.2	26.0
	Sandwip	01	33.6	26.4		Dimla	01	35.1	27.2
	Sitakunda	06	35.2	26.5		Rajarhat	00	35.5	26.8
	Rangamati	23	35.5	26.0	Khulna	Khulna	00	<u>36.5</u>	28.4
	Cumilla	12	35.0	25.4		Mongla	00	35.3	27.7
	Chandpur	00	<u>36.5</u>	26.0		Satkhira	00	36.0	28.4
	M.Court	11	35.0	26.6		Jashore	<u>41</u>	34.0	26.4
	Feni	18	36.0	25.5		Chuadanga	<u>12</u>	35.7	27.0
	Hatiya	Trace	34.0	27.0	Kumarkhali	00	35.2	26.4	
	Cox's Bazar	03	33.0	27.0	Barishal	Barishal	00	35.4	27.8
Kutubdia	05	32.3	27.0	Patuakhali		00	36.0	28.0	
Teknaf	00	33.0	25.0	Khepupara		00	35.4	26.9	
Sylhet	Sylhet	28	36.0	26.0	Bhola	00	35.0	26.4	
	Srimangal	21	35.5	25.4					

Highlights:

- Country average bright sunshine hour was 5.00 hours per day during last week.
- Country average free water loss during the previous week was 3.50 mm per day.

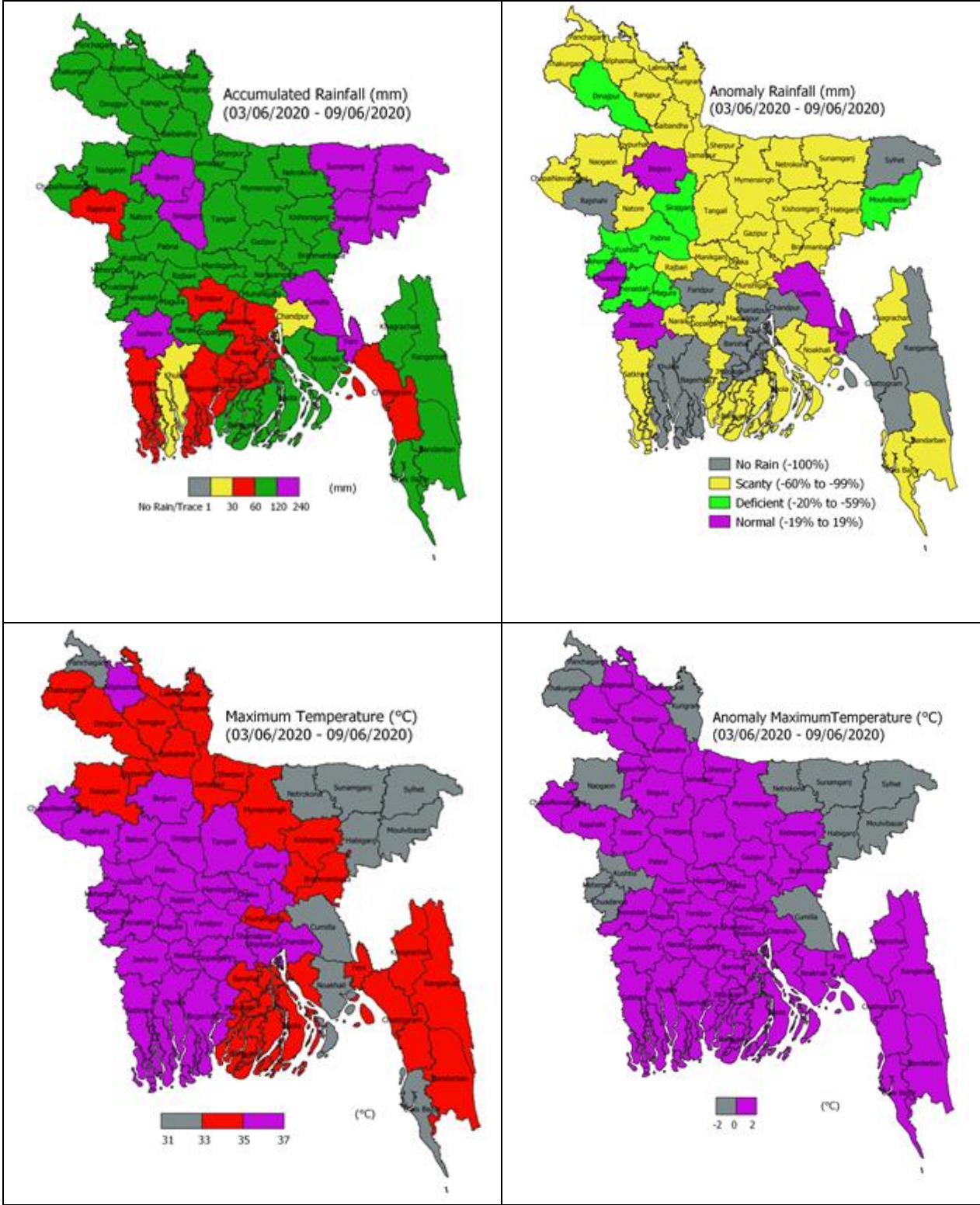
Weather Forecast Valid for 24 Hours commencing 06 PM Today:

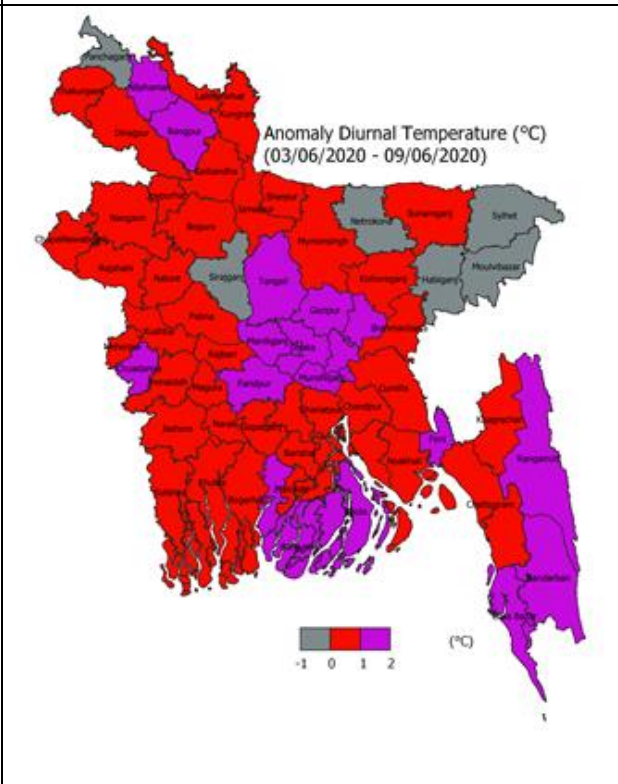
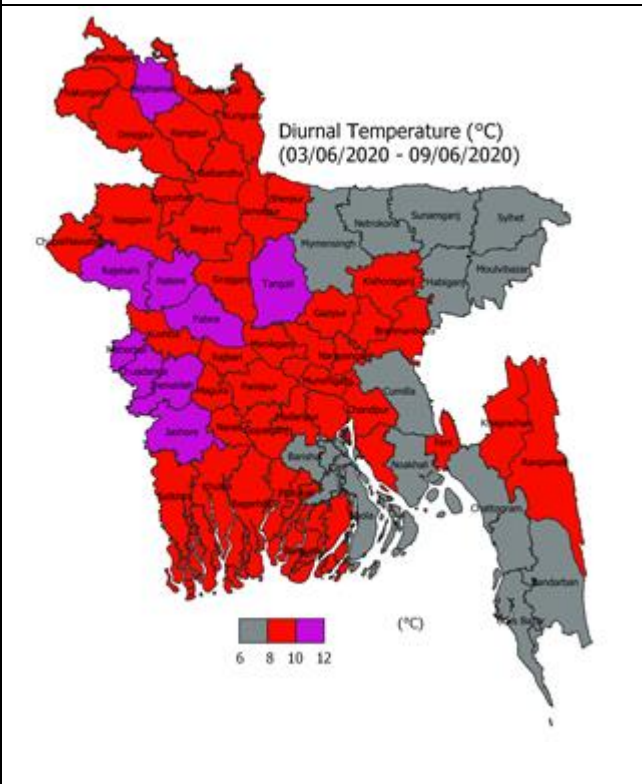
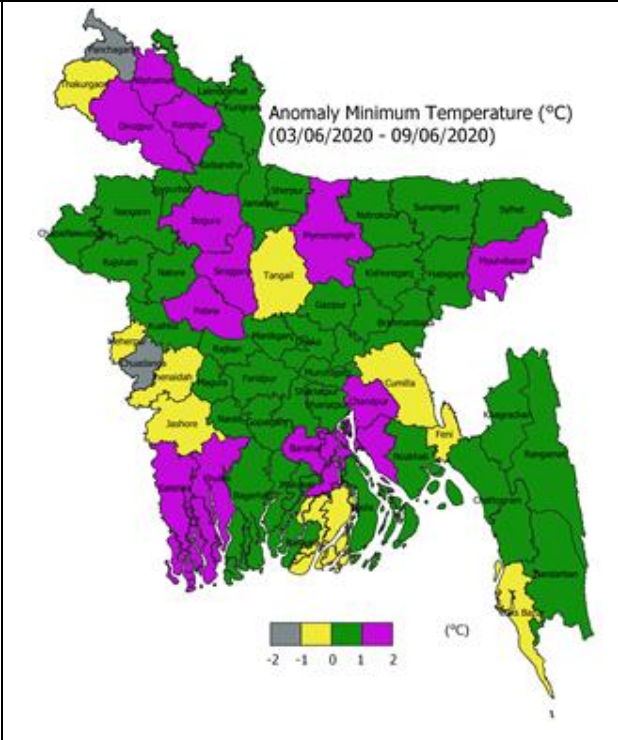
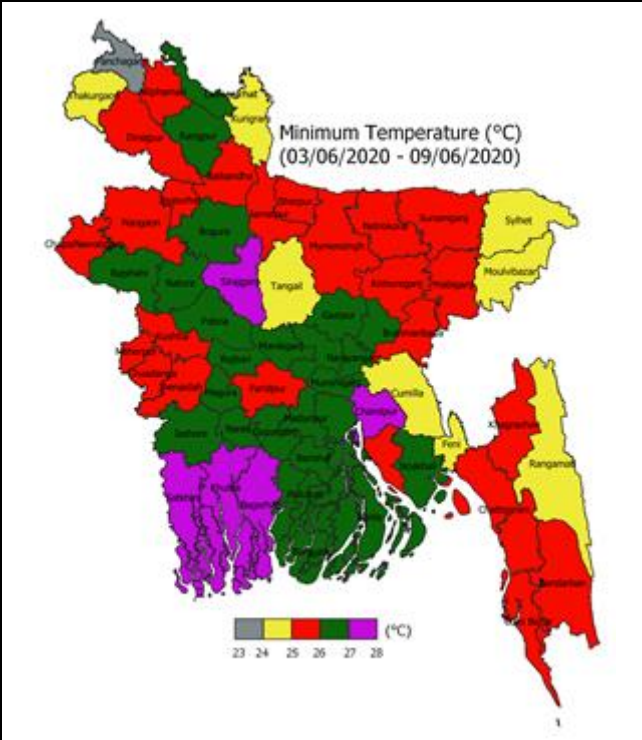
Forecast: Light to moderate rain/thunder showers accompanied by temporary gusty/squally wind is likely to occur at many places over Chattogram, Barishal & Sylhet divisions; at a few places over Mymensingh, Dhaka & Khulna divisions and at one or two places over Rajshahi & Rangpur divisions with moderately heavy to heavy falls at isolated places over Chattogram & Sylhet divisions.

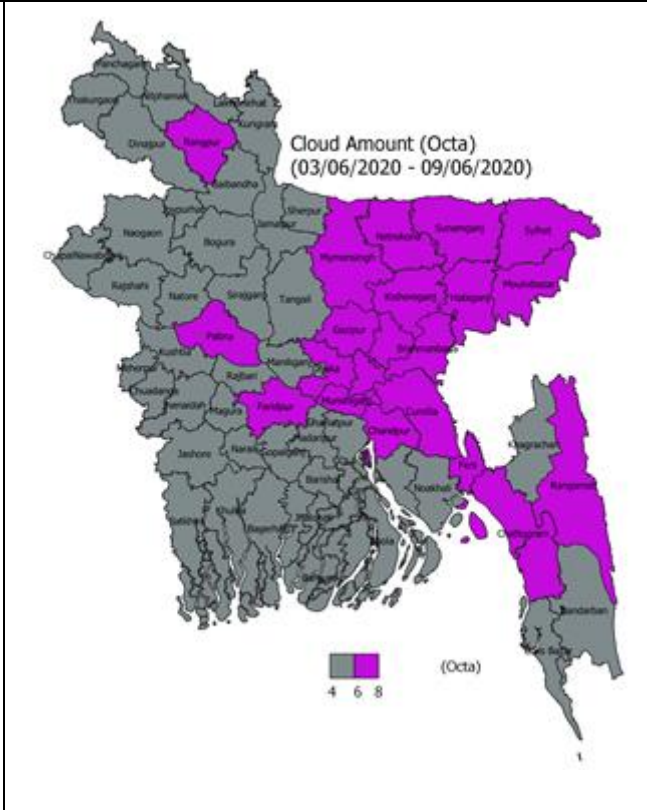
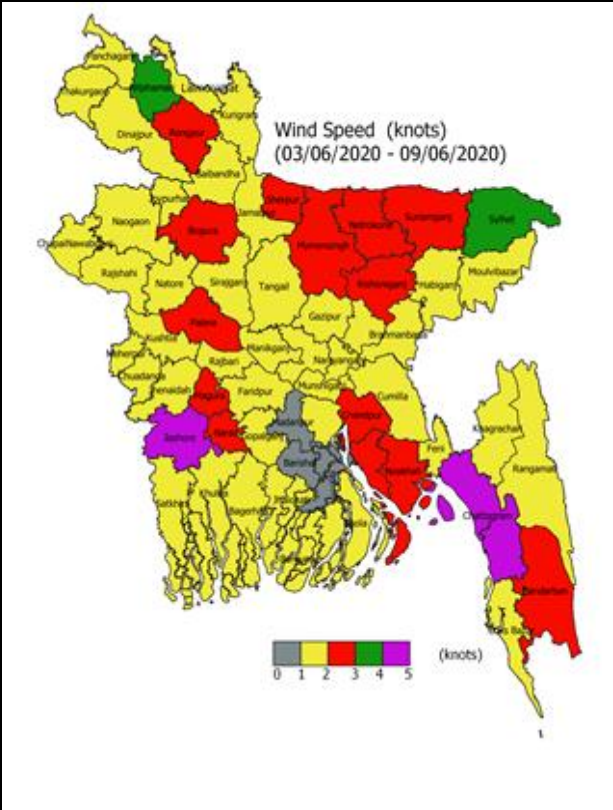
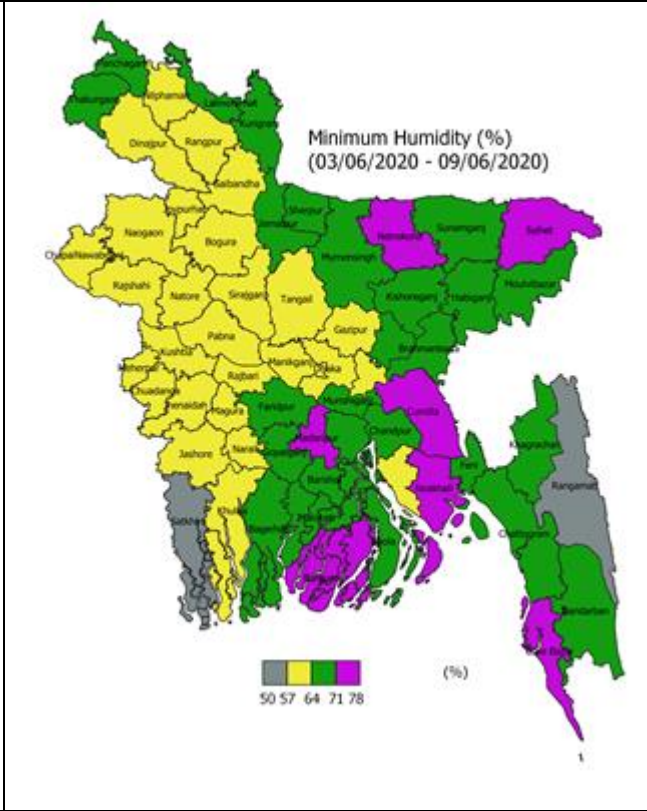
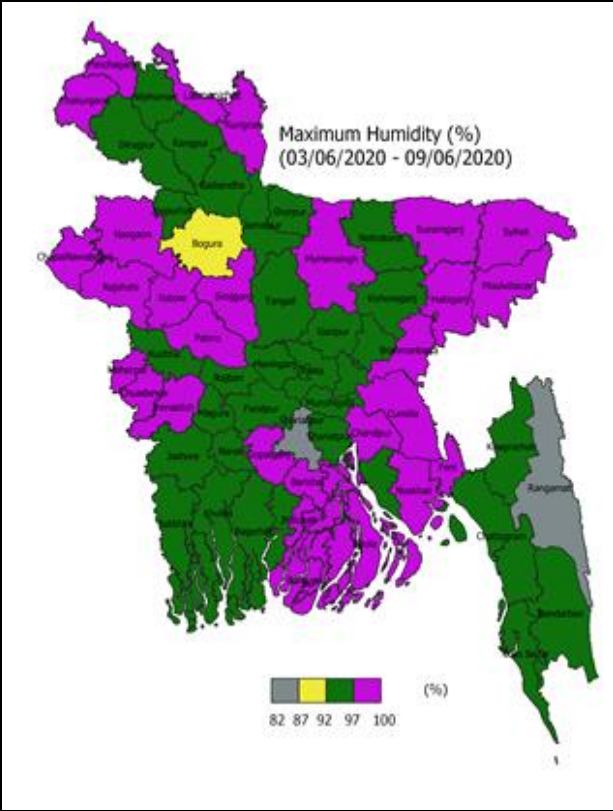
Temperature: Day and night temperature may remain nearly unchanged over the country.

Heat Wave: Mild heat wave is sweeping over the regions of Dhaka, Madaripur, Tangail, Feni, Chandpur, Sylhet, Rajshahi, Khulna, Patualkali and Satkhira and it may continue.

Spatial Distribution of weather parameters for the Week ending 09 June 2020





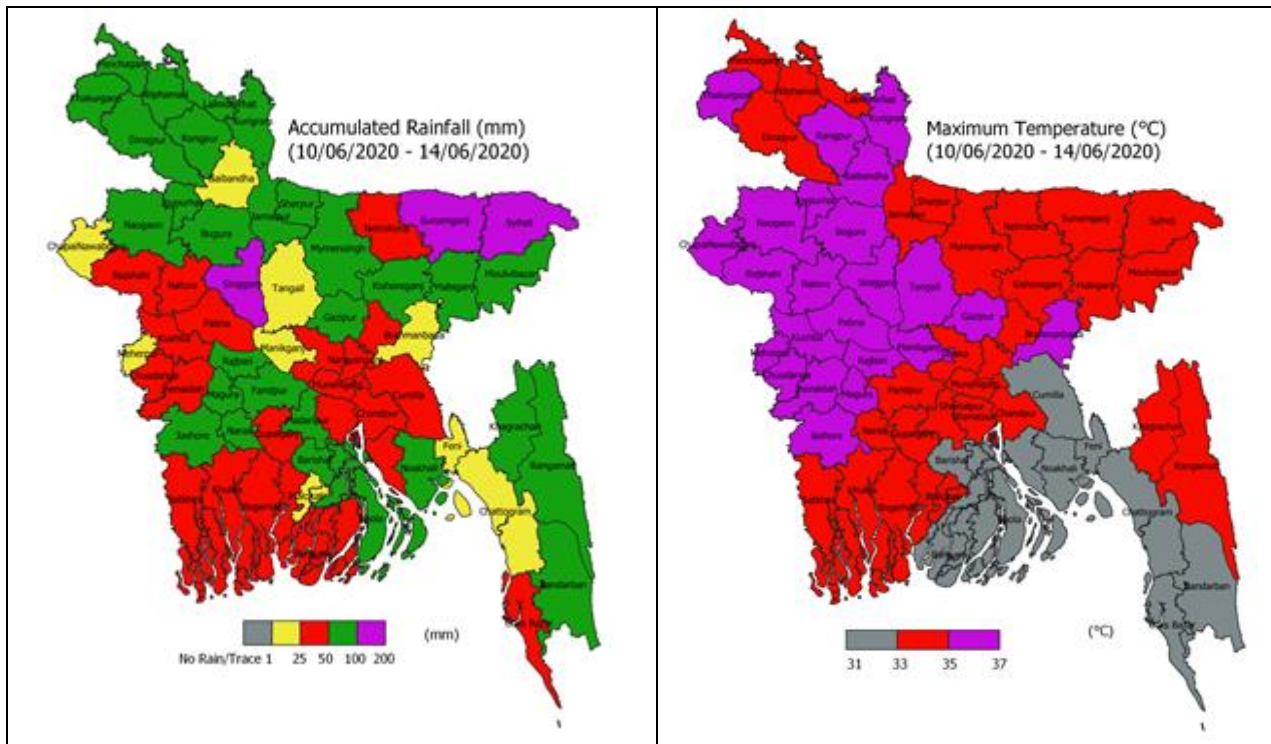


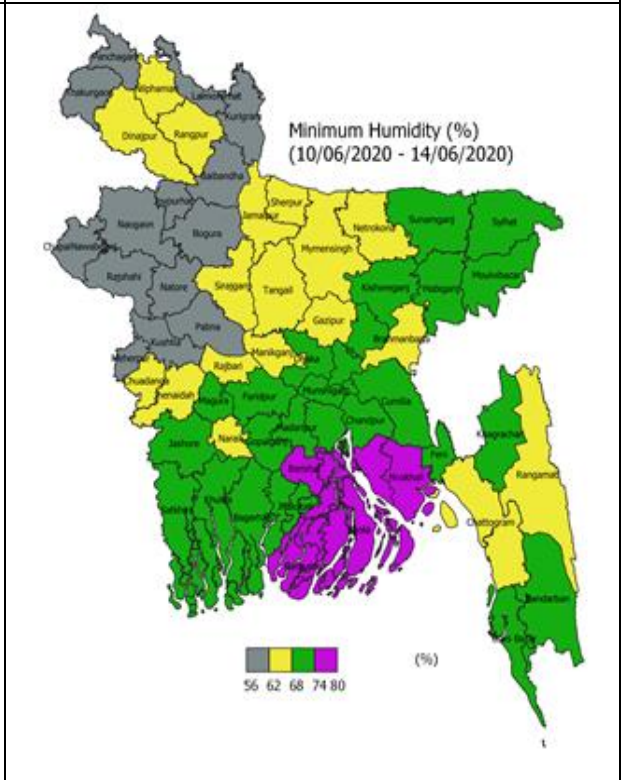
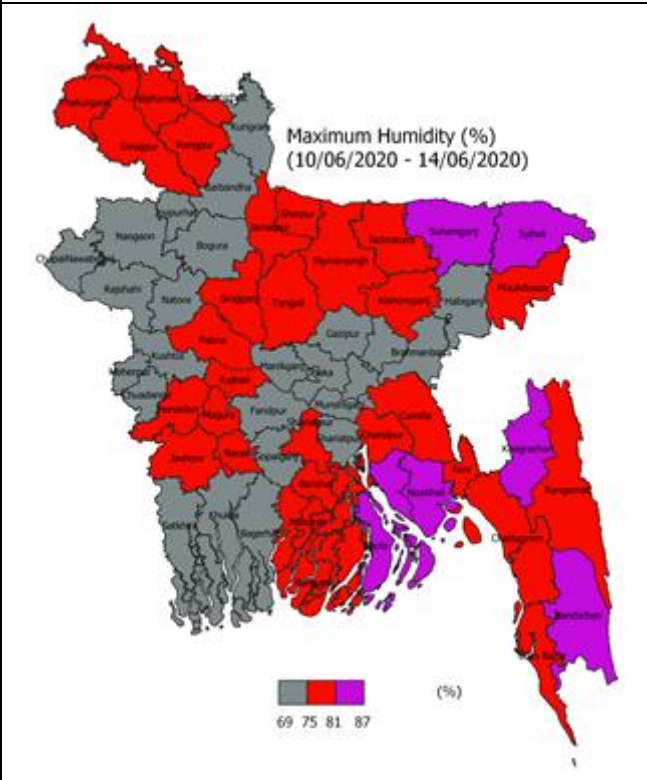
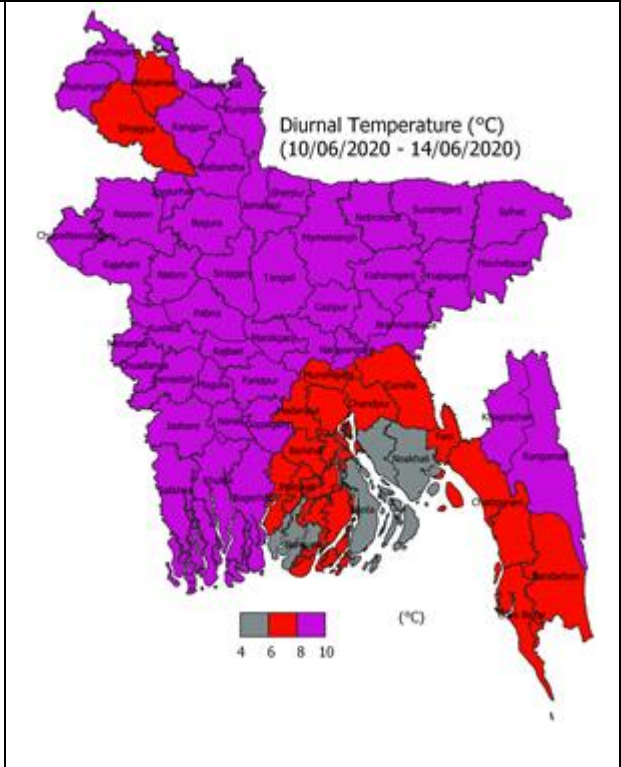
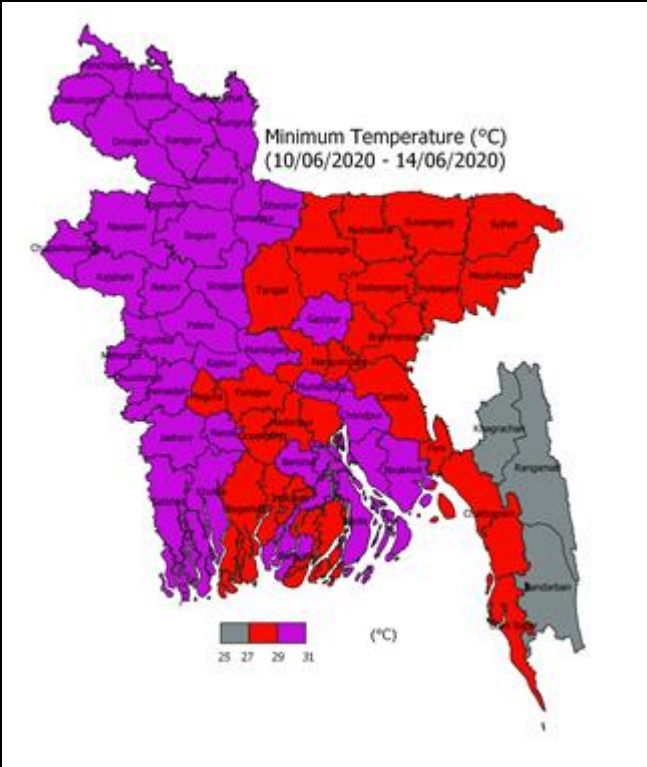
Weather Forecast and Advisory for the Period of 03.05.2020 to 10.06.2020

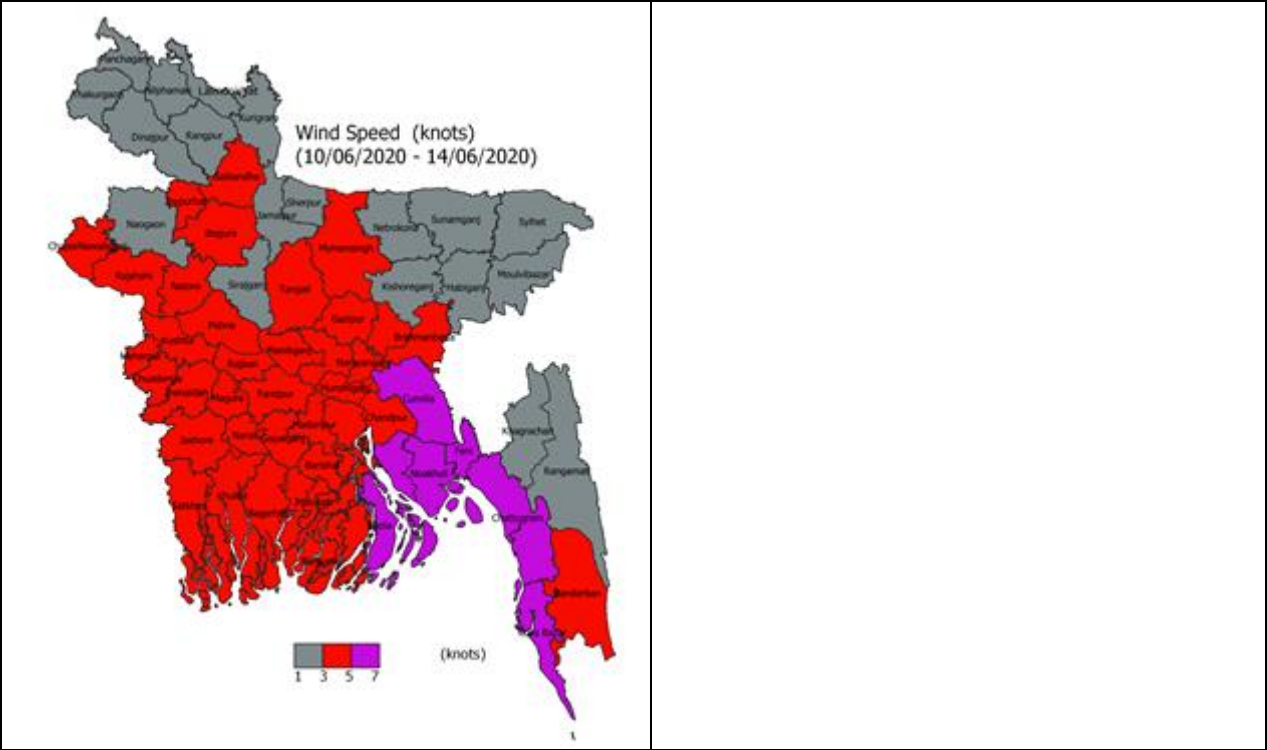
Bright sunshine hour is likely to be from 5.00 to 6.00 hours per day during this week. Average free water loss is likely to be from 3.00 to 4.00 mm per day during this week.

- Light (04-10 mm/d) to moderate (11-22 mm/d) rain /thunder shower accompanied by temporary gusty/squally wind is likely to occur at many places over Dhaka, Mymensingh, Sylhet, Chattogram, Rajshahi and Rangpur divisions and at a few places over Khulna and Barishal Divisions and with a chances of moderately heavy (23-43 mm/day) to heavy (44-88 mm/day) falls at one or two places over the country during this period.
- Day and night temperature may rise 1-2°C over the country during this period.

District Wise Quantitative Weather Forecast for next Five days from 10 June -14 June'2020

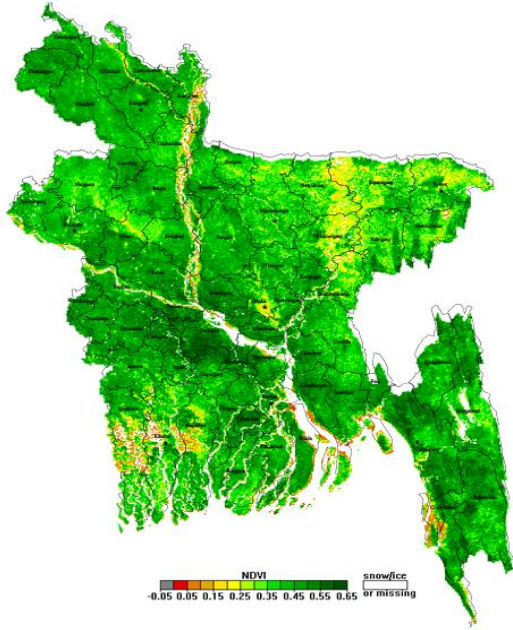




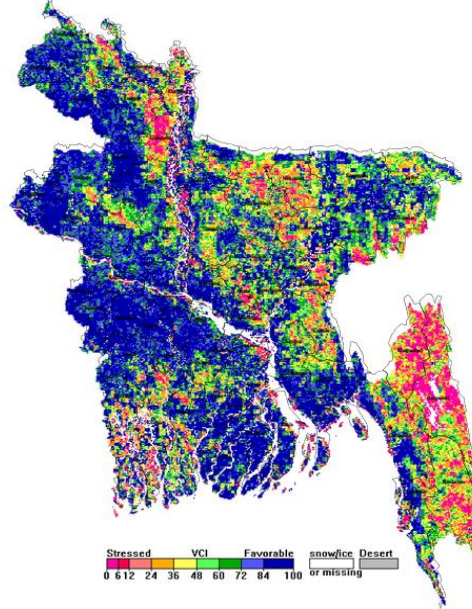


Different Satellite Products over Bangladesh

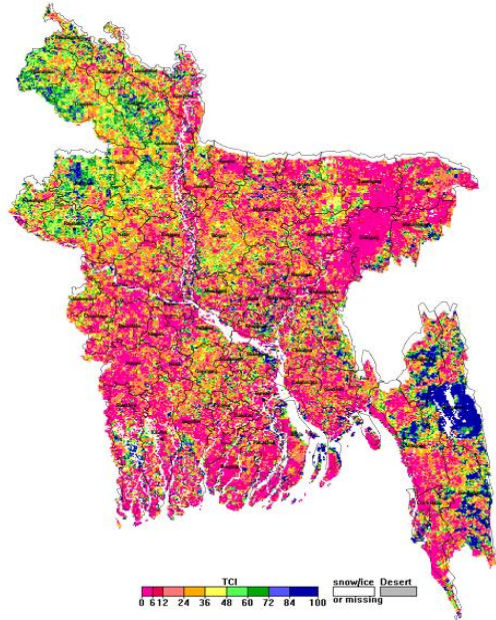
NOAA/VIIRS BLENDED NDVI composite for the week No. 22 (26 May-01 June 2020) over Agricultural regions of Bangladesh



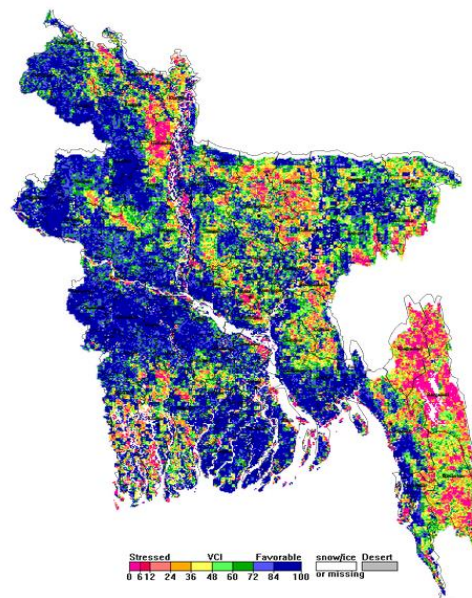
NOAA/ AVHRR BLENDED VCI composite for the week No. 22 (26 May-01 June 2020) over Agricultural regions of Bangladesh



NOAA/ AVHRR BLENDED TCI composite for the week No. 22 (26 May-01 June 2020) over Agricultural regions of Bangladesh

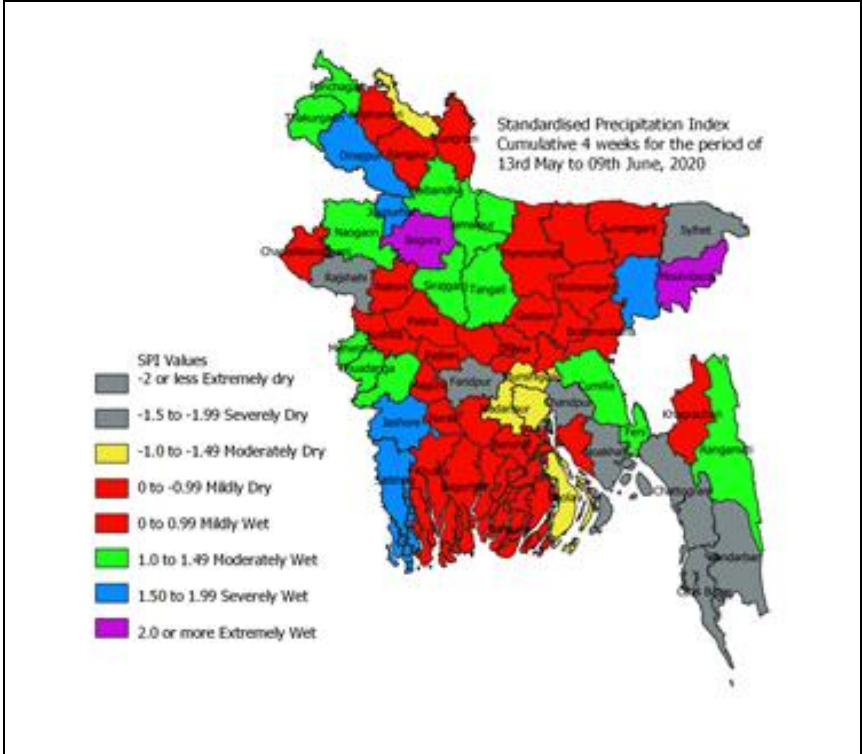


NOAA/ AVHRR BLENDED VHI composite for the week No. 22 (26 May-01 June 2020) over Agricultural regions of Bangladesh



Monitoring Meteorological Drought in Bangladesh using Standardized Precipitation Index (SPI)

It has been observed that during last four weeks (including May) 2020 extremely wet conditions prevails in districts located northwest parts and mild to moderately wet condition prevails in northern and central parts and northeast, southeast part of Bangladesh was prevailed dry conditions for last four weeks.



Data source: Bangladesh Meteorological Department