



NATIONAL AGROMETEOROLOGICAL ADVISORY SERVICE BULLETIN

**04 January 2023 (WEDNESDAY)
[FOR THE PERIOD 04.01.2023 – 08.01.2023]**



DISCLAIMER

Under the Agro-meteorological Information System Development Project, Agromet Advisory Service Bulletins at National & Sixty Four (64) districts have been prepared on experimental basis. These bulletins are being displayed through the website of Department of Agricultural Extension for valuable comments/ suggestions from all concerned.

ISSUED BY

Agro-Meteorological Information Systems
Development Project
Department of Agricultural Extension (DAE)
Ministry of Agriculture
In collaboration with Bangladesh
Meteorological Department

Realized Weather at different locations in the country

Rainfall for last 24 hours (till 06 AM on 04 January 2023) and maximum temperature on 03 January and minimum temperature on 04 January 2022 is given below:

Name of Divisions	Name of Stations	Rain fall (mm)	Max. Temp (°C)	Min. Temp (°C)	Name of Divisions	Name of Stations	Rain fall (mm)	Max. Temp (°C)	Min. Temp (°C)	
Dhaka	Dhaka	00	17.0	14.1	Chattogram	Chattogram	00	25.0	14.9	
	Tangail	00	16.5	13.0		Sandwip	00	25.9	14.5	
	Faridpur	00	16.2	13.2		Sitakunda	00	26.3	12.5	
	Madaripur	00	16.2	13.3		Rangamati	00	26.5	12.5	
	Gopalganj	00	17.1	13.5		Cumilla	00	21.4	15.0	
	Nikli	00	21.7	11.6		Chandpur	00	19.3	15.4	
Rajshahi	Rajshahi	00	17.6	10.9		M.Court	00	23.0	15.5	
	Ishurdi	00	16.0	10.0		Feni	00	24.5	13.2	
	Bogura	00	17.2	12.2		Hatiya	00	24.6	15.3	
	Badalgachhi	00	18.6	12.2		Cox's Bazar	00	27.7	15.4	
	Tarash	00	16.7	12.0		Kutubdia	00	26.8	14.5	
						Teknaf	00	28.2	13.5	
Rangpur	Rangpur	00	22.0	12.5		Khulna	Khulna	00	18.8	13.5
	Dinajpur	00	20.5	12.0			Mongla	00	22.0	13.5
	Sayedpur	00	22.5	12.2	Satkhira		00	18.7	14.5	
	Tetulia	00	22.0	11.2	Jashore		00	17.2	14.0	
	Dimla	00	22.0	12.1	Chuadanga		00	15.7	12.0	
	Rajarhat	00	22.2	11.5	Kumarkhali		00	15.8	12.0	
Mymensingh	Mymensingh	00	19.5	13.0	Barishal	Barishal	00	22.4	13.1	
	Netrokona	00	22.4	12.9		Patuakhali	00	23.5	13.5	
Sylhet	Sylhet	00	25.8	12.0		Khepupara	00	23.8	13.6	
	Srimangal	00	23.0	09.0		Bhola	00	23.3	14.2	

Highlights:

- Country average bright sunshine hour was 5.00 hours per day during last week.
- Country average free water loss during the previous week was 2.00 mm per day.

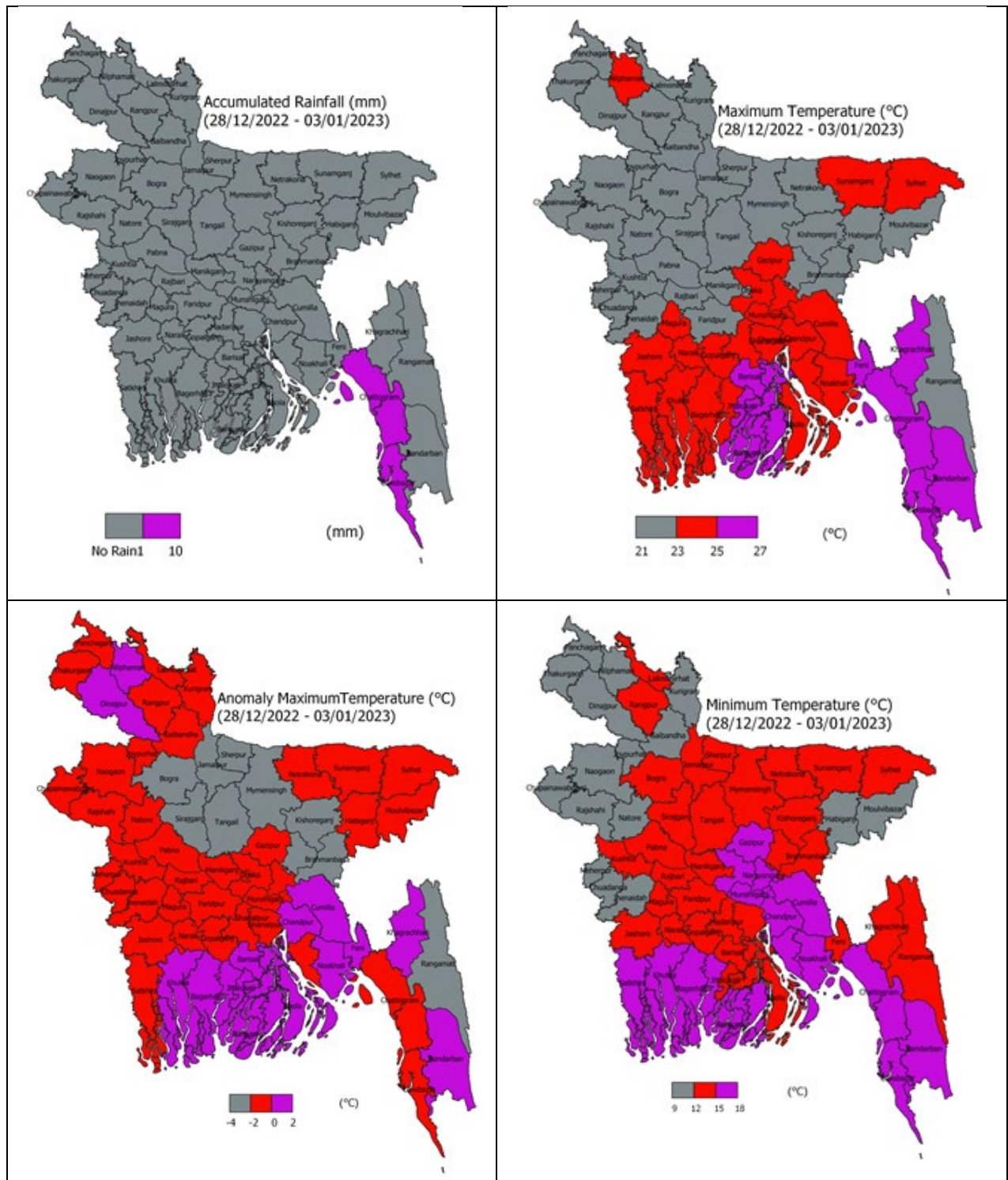
Weather Forecast Valid for 24 Hours commencing 06 PM Today:

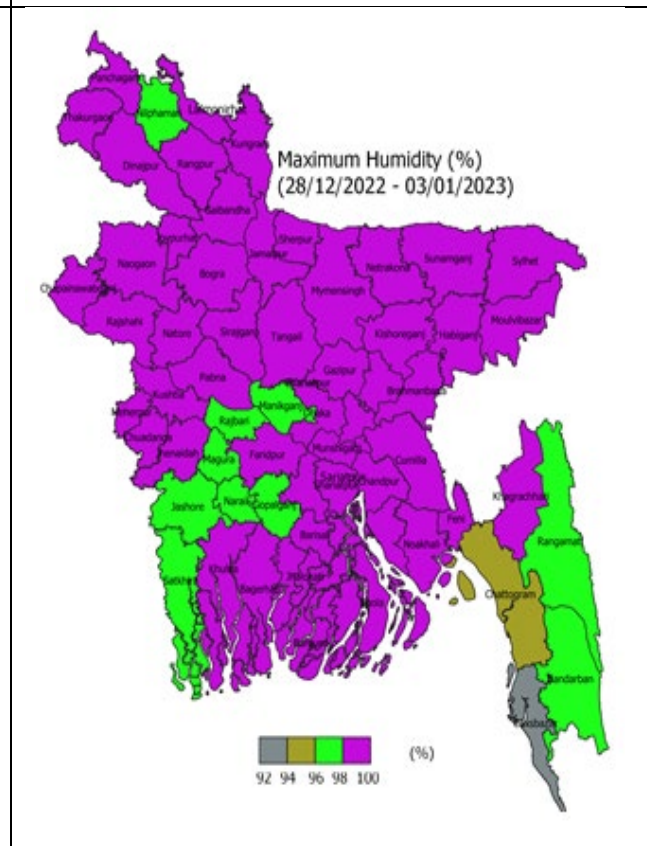
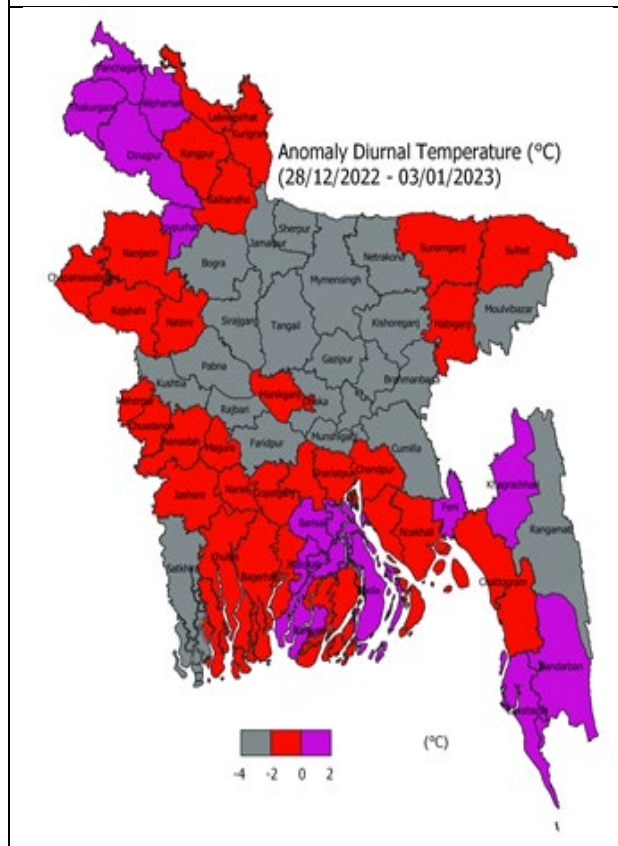
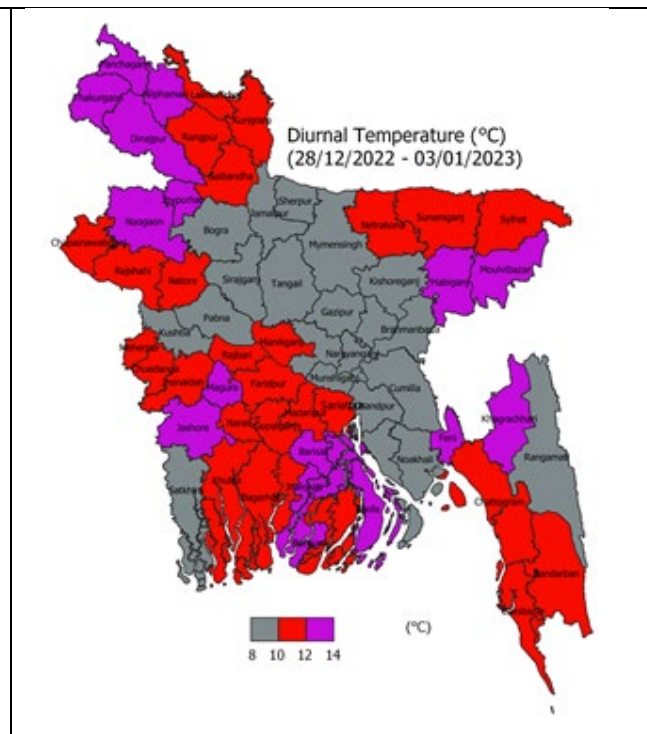
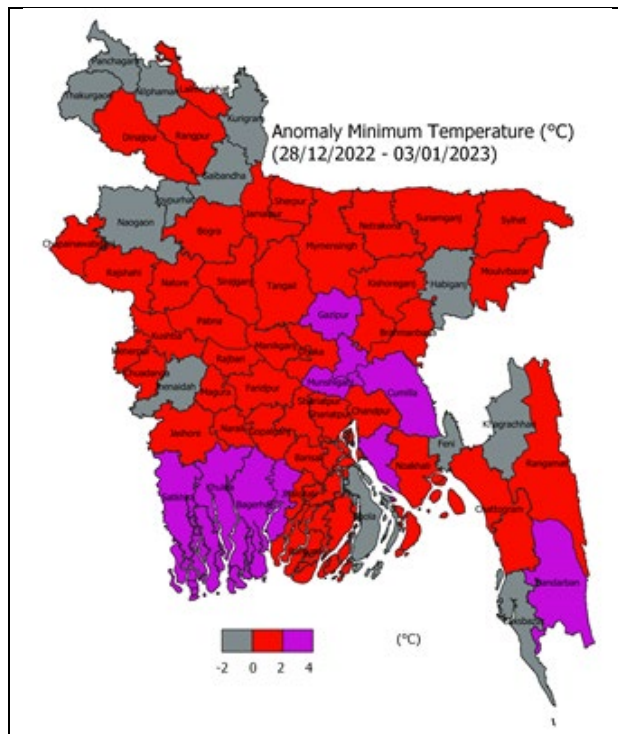
Forecast: Weather may remain dry with partly cloudy sky over the country.

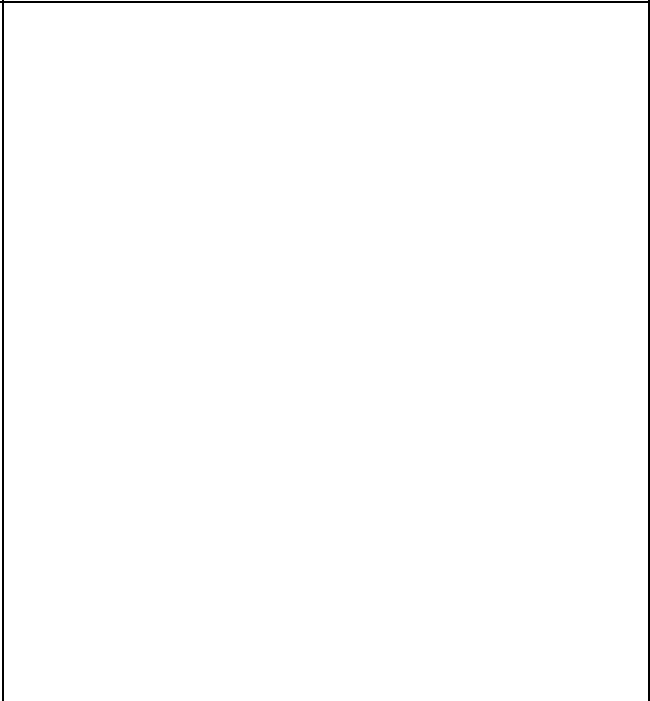
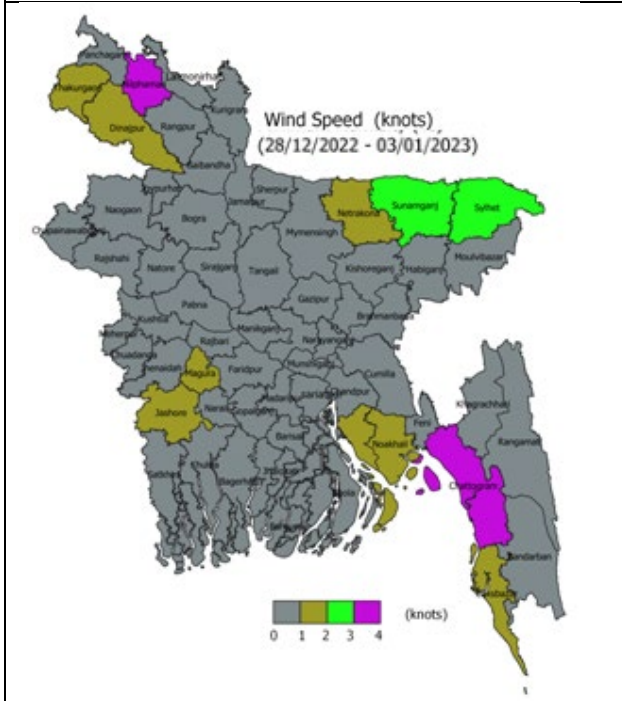
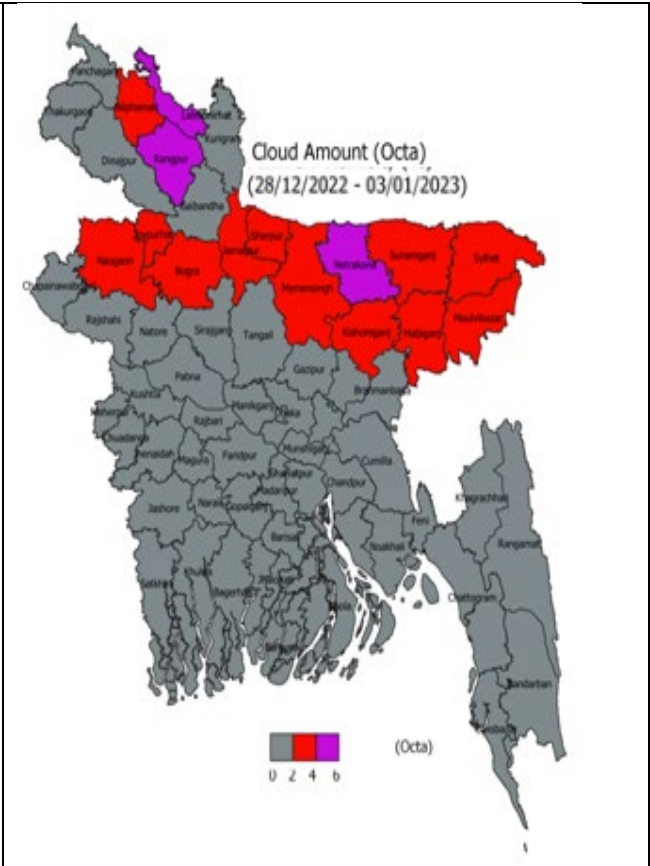
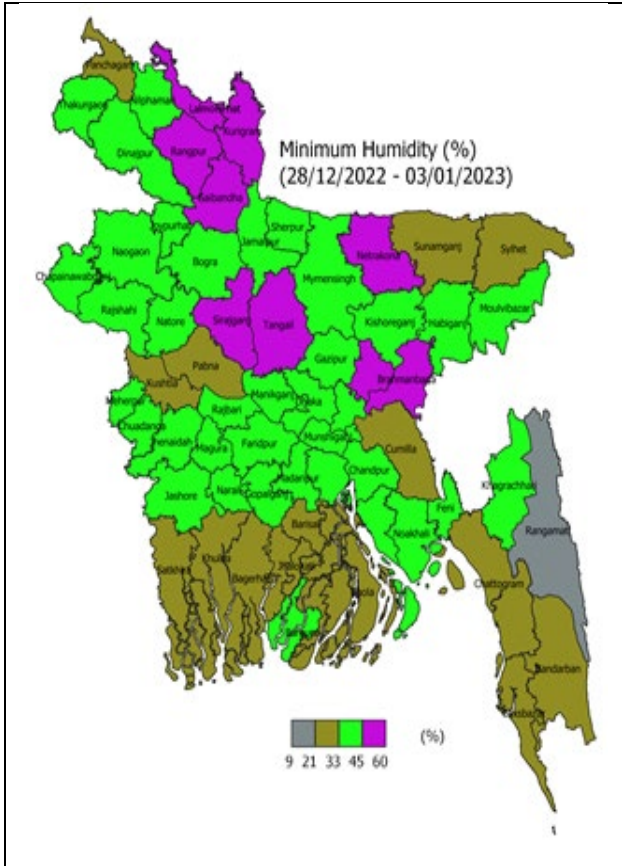
Fog: Moderate to thick fog may occur over the country during midnight till morning and it may continue till noon at places.

Temperature: Night temperature may remain nearly unchanged and day temperature may rise slightly over the country. Due to reduced day & night temperature differences moderate to severe cold feeling condition is likely to continue over north, north-western and central part of the country

Spatial Distribution of weather parameters for the Week ending on 03 January 2023





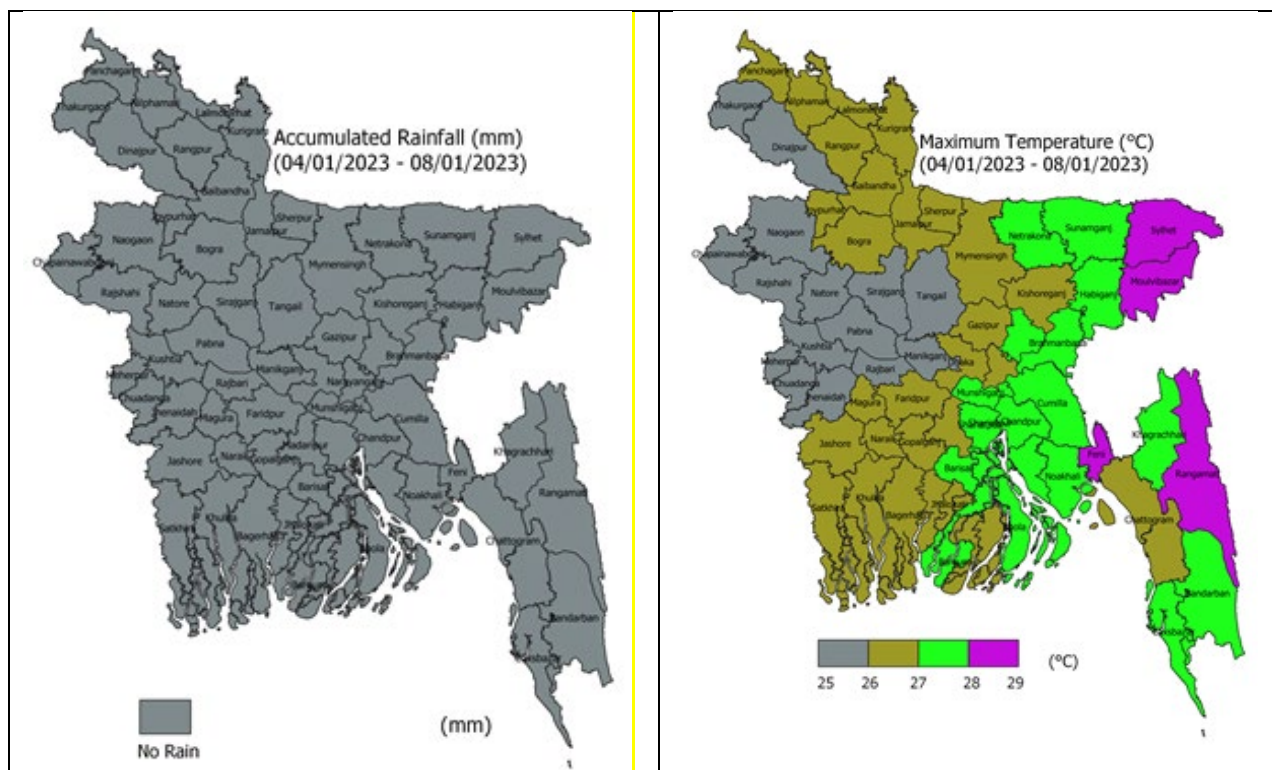


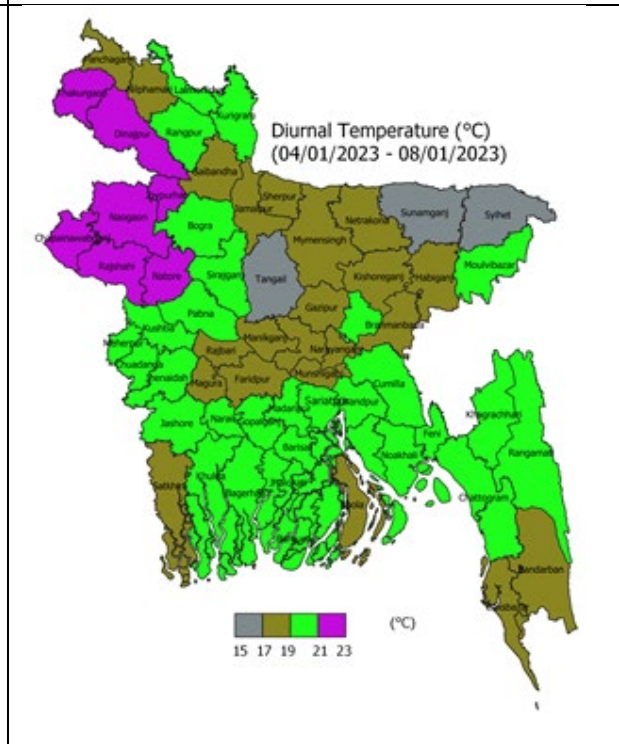
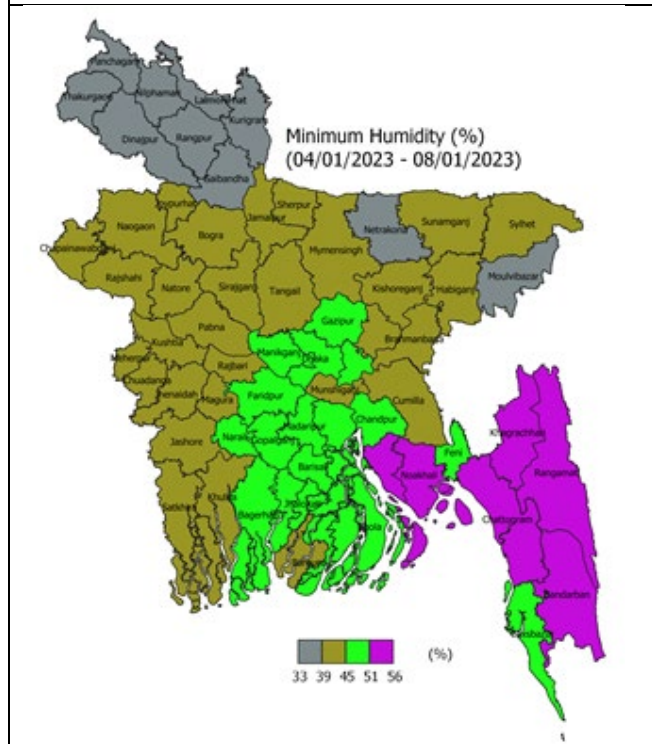
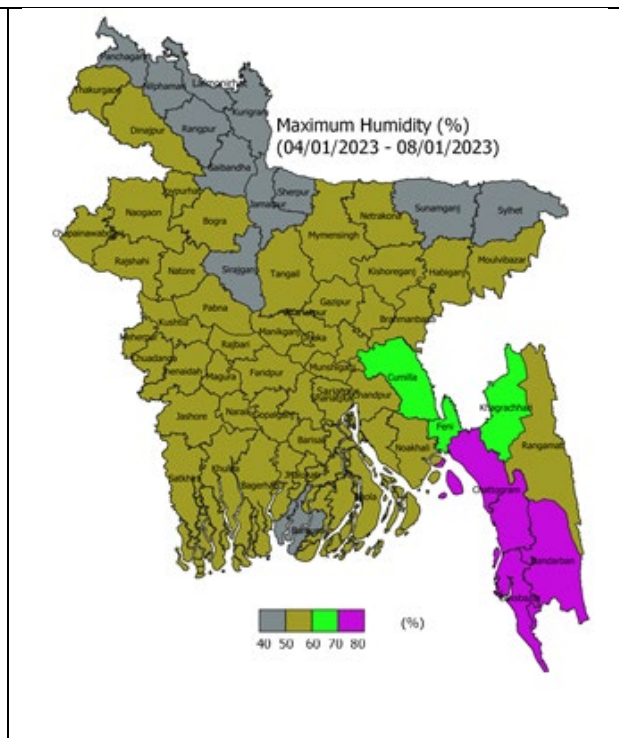
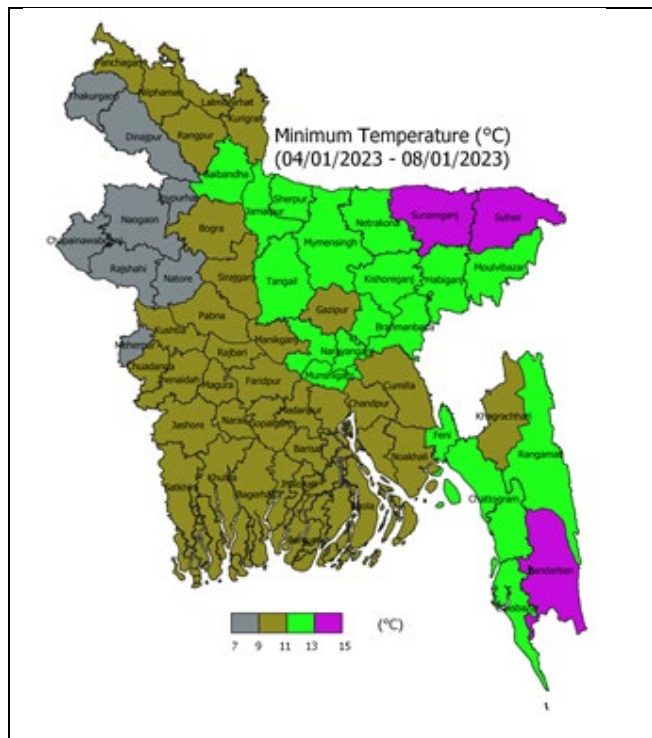
Weather Forecast and Advisory for the Period of 01.01.2023 to 07.01.2023

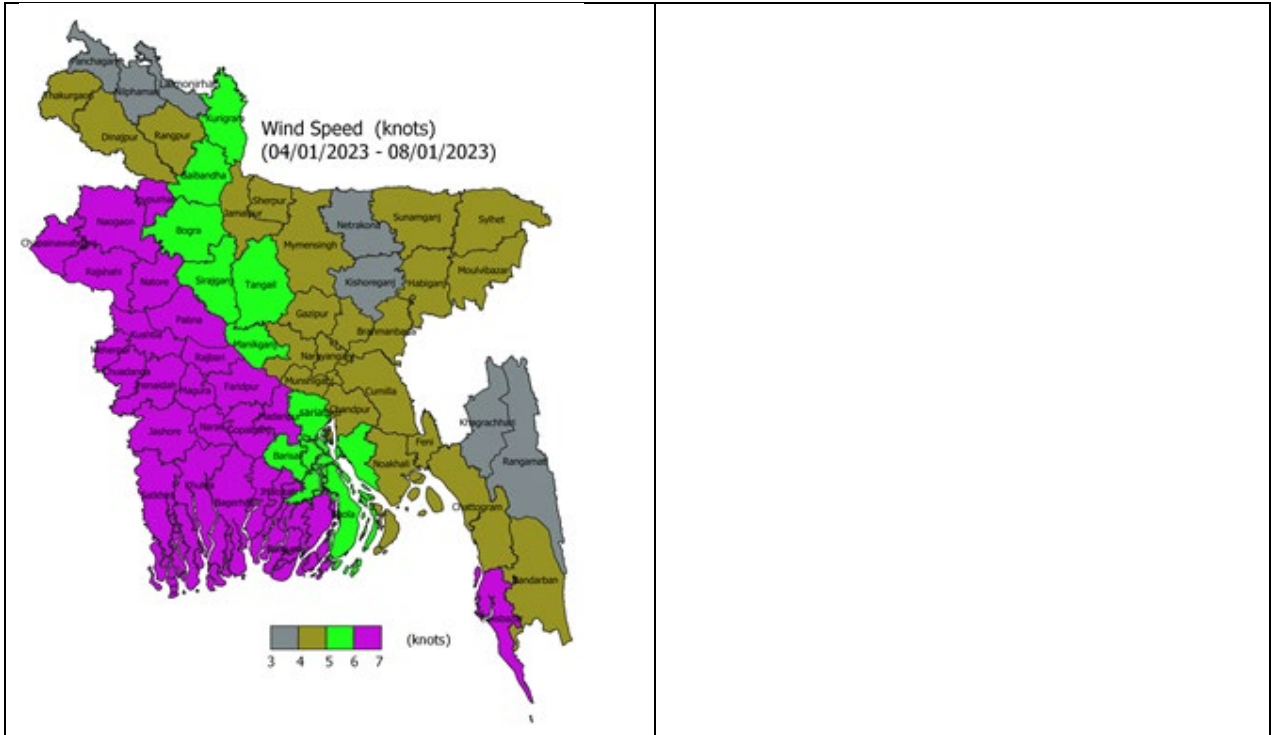
Bright sunshine hour is likely to be from 4.00 to 6.00 hours per day during this week. Average free water loss is likely to be from 1.75 to 2.75 mm per day during this week.

- Weather may remain dry with temporary partly cloudy sky over the country during the period.
- Moderate to thick fog may occur at places over the country during midnight to morning during this period.
- Day and night temperature may remain nearly unchanged over the country during the 1st half of this period.
- Day and night temperature may fall by (1-2)^oc over the country during the 2nd half of this period.
- Mild to moderate cold wave may sweep at places over the country during this period

District Wise Quantitative Weather Forecast for next Five days from 04 Jan.- 08 Jan. 2023







Different Satellite Products over Bangladesh

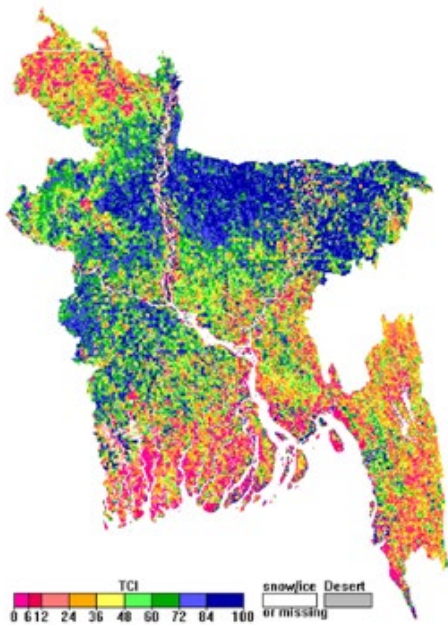
NOAA/VIIRS BLENDED NDVI composite for the week. No. 52 (23 December-29 December) over Agricultural regions of Bangladesh



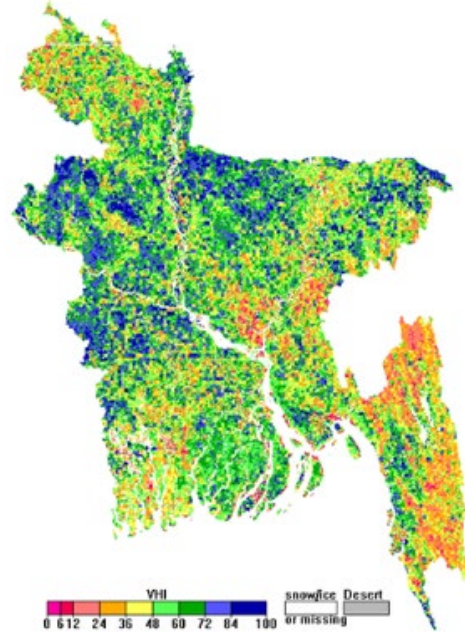
NOAA/ AVHRR BLENDED VCI composite for the week No. 52 (23 December-29 December) over Agricultural regions of Bangladesh



NOAA/ AVHRR BLENDED TCI composite for the week No. 52 (23 December-29 December) over Agricultural regions of Bangladesh



NOAA/ AVHRR BLENDED VHI composite for the week No. 52 (23 December-29 December) over Agricultural regions of Bangladesh



Agromet Advisories

According to the medium range forecast, there is no chance of rainfall of the country in the next five days. The following agromet advisories are provided in these circumstances:

Rajshahi Region (Districts: Rajshahi, Chapainawabganj, Naogaon and Natore)

Wheat

Stage: Vegetative Growth

- Farmers are advised to apply 2nd time irrigation at wheat field at 55-60 DAS (panicle initiation stage) for good yield.
- If rats are noticed, arrange net to catch the same or apply 2% Zinc phosphide or Lanirat (3-5g/hole) to control the attack of rats.
- At this stage of crop and prevailing weather conditions, monitoring of termite infestation is advised in late sown wheat crop. If termite infestation is observed in the crop field, apply Chlorpyrifos 20EC @ 4.0 ml/litre in the soil at evening hours.
- Apply irrigation.

Rice Boro

Stage: Transplanting

- Seedlings of 35 to 45 days old are to be transplanted.
- Dead hills are to be replanted within 7-10 days of transplanting.
- Maintain 1-2 cm land water level.
- Apply irrigation.

Vegetable

- Protect young plants of vegetable from low temperature.
- Present weather condition is favourable for the incidence of yellowish-brown spot in tomato, Spray mancozeb 2.5-3g/litres of water.
- Under cold conditions, there may be infestation of yellow vein mosaic in okra. Farmers are advised to remove all infected plants and destroy them. Disinfect gardening tools after every use. Control white fly, the vector, by spraying imidacloprid 17.8 SL @ 0.3ml/ liters of water before populations reach high levels.
- Under the prevailing weather condition, monitoring is advised for infestation of fruit borers in brinjal, tomato, chilli. If infestation occurs, installation of pheromone traps @ 3-4 traps per acre is advised.
- Apply Irrigation.

Horticultural

- Protect young plants of horticulture crops from low temperature

- It is advised to cover the small horticulture plants with grass to avoid cold paralysis.
- To protect young fruit plants from chilly winds, cover young fruit plants with straw/polythene sheets/ gunny bags.
- In fruit crops, apply organic mulches after earthing up and weeding to conserve residual soil moisture as well as to maintain the soil temperature.
- Apply Irrigation.

Livestock

- The temperature can be increased by lighting high-wattage bulbs in cowsheds.
- Feed rich grain.
- Vaccinate the cattle to prevent scurvy.
- Give lukewarm water to drink.
- Feed 50-100g mineral mixture daily with feed to maintain cattle health.

Poultry

- Protect the chicken from the cold air with plastic screens or plastic bags on all sides.
- High power bulbs (100 watts or more) in the poultry shed for 1-2 hours after dusk will increase egg production and diseases will reduce.
- Take necessary measures to protect against fungal diseases.
- Vaccinate Spring Disease of Chicken.
- Let the hens out of the coop a little late in the morning and close the coop door in the evening.

Fishery

- Reduce fish density, and transfer to other ponds if necessary.
- Ensure enough water in the pond to avoid the harmful effects of low temperatures.
- Reduce food in winter. Stop feeding if needed.
- Keep clean the pond water.
- Apply lime in the pond to protect fish from various bacterial diseases in winter. (250-500 gm/per decimal)

Rangpur Region (Districts: Rangpur, Kurigram, Gaibandha, Nilphamari, Lalmonirhat)

Wheat

Stage: Grain Formation

- Special monitoring of blast disease is required as there is chance of the disease due to likely incidence of fog during late night till morning. If noticed, apply Nativo 75 WG 6 gm/decimal to control the disease.
- During the stage, farmers are advised to 3rd time irrigation at wheat field for good yield.

- At this stage of crop and prevailing weather conditions, monitoring of termite infestation is advised in late sown wheat crop. If termite infestation is observed in the crop field, apply Chlorpyrifos 20EC @ 4.0 ml/litre in the soil at evening hours.
- Apply irrigation.

Rice Boro

Stage: Tillering

- There is chance of Blast and brown spot attack due to light fog and raised temperature. Apply Trooper 6.0g or Nativo 6.0g/litre water twice in 10-15 days.
- To captivate & control the butterflies, place 2 Pheromone Traps/bigha. Also apply Carbofuran 5g @10kg / ha. or Diazinon 10g @17kg/ha. for its control.
- If noticed, collect the adults using hand net & destroy them by burying under soil or by burning.
- There is a chance of attack of insect/pests like, Rice stemborer, Rice hispa, etc. Constant monitoring is required for its level of incidences.
- Maintain 5-7 cm land water level.
- Apply irrigation.

Vegetable

- Protect young plants of vegetable from low temperature.
- Present weather condition is favourable for the incidence of yellowish-brown spot in tomato, Spray mancozeb 2.5-3g/litres of water.
- Under cold conditions, there may be infestation of yellow vein mosaic in okra. Farmers are advised to remove all infected plants and destroy them. Disinfect gardening tools after every use. Control white fly, the vector, by spraying imidacloprid 17.8 SL @ 0.3ml/ liters of water before populations reach high levels.
- Under the prevailing weather condition, monitoring is advised for infestation of fruit borers in brinjal, tomato, chilli. If infestation occurs, installation of pheromone traps @ 3-4 traps per acre is advised.
- Apply Irrigation.

Horticultural

- Protect young plants of horticulture crops from low temperature
- It is advised to cover the small horticulture plants with grass to avoid cold paralysis.
- To protect young fruit plants from chilly winds, cover young fruit plants with straw/polythene sheets/ gunny bags.
- In fruit crops, apply organic mulches after earthing up and weeding to conserve residual soil moisture as well as to maintain the soil temperature.
- Apply Irrigation.

Livestock

- The temperature can be increased by lighting high-wattage bulbs in cowsheds.
- Feed rich grain.
- Vaccinate the cattle to prevent scurvy.
- Give lukewarm water to drink.
- Feed 50-100g mineral mixture daily with feed to maintain cattle health.

Poultry

- Protect the chicken from the cold air with plastic screens or plastic bags on all sides.
- High power bulbs (100 watts or more) in the poultry shed for 1-2 hours after dusk will increase egg production and diseases will reduce.
- Take necessary measures to protect against fungal diseases.
- Vaccinate Spring Disease of Chicken.
- Let the hens out of the coop a little late in the morning and close the coop door in the evening.

Fishery

- Reduce fish density, and transfer to other ponds if necessary.
- Ensure enough water in the pond to avoid the harmful effects of low temperatures.
- Reduce food in winter. Stop feeding if needed.
- Keep clean the pond water.
- Apply lime in the pond to protect fish from various bacterial diseases in winter. (250-500 gm/per decimal)

Dinajpur Region (Districts: Dinajpur, Thakurgaon and Panchagarh)

Wheat

Stage: Vegetative Growth

- At this stage of crop and prevailing weather conditions, monitoring of termite infestation are advised in late sown wheat crop. If termite infestation is observed in the crop field, apply Chlorpyrifos group pesticide is suggested.
- If rats are noticed, arrange net to catch the same or apply zinc phosphide to control the attack of rats.
- Apply irrigation.

Rice Boro

Stage: Tillering

- There is chance of Blast and brown spot attack due to light fog and raised temperature. Apply Trooper 6.0g or Nativo 6.0g/litre water twice in 10-15 days.
- To captivate & control the butterflies, place 2 Pheromone Traps/bigha. Also apply Carbofuran 5g @10kg / ha. or Diazinon 10g @17kg/ha. for its control.

- If noticed, collect the adults using hand net & destroy them by burying under soil or by burning.
- There is a chance of attack of insect/pests like, Rice stemborer, Rice hispa, etc. Constant monitoring is required for its level of incidences.
- Maintain 5-7 cm land water level.
- Apply irrigation.

Vegetable

- Protect young plants of vegetable from low temperature.
- Present weather condition is favourable for the incidence of yellowish-brown spot in tomato, Spray mancozeb 2.5-3g/litres of water.
- Under cold conditions, there may be infestation of yellow vein mosaic in okra. Farmers are advised to remove all infected plants and destroy them. Disinfect gardening tools after every use. Control white fly, the vector, by spraying imidacloprid 17.8 SL @ 0.3ml/ liters of water before populations reach high levels.
- Under the prevailing weather condition, monitoring is advised for infestation of fruit borers in brinjal, tomato, chilli. If infestation occurs, installation of pheromone traps @ 3-4 traps per acre is advised.
- Apply Irrigation.

Horticultural

- Protect young plants of horticulture crops from low temperature
- It is advised to cover the small horticulture plants with grass to avoid cold paralysis.
- To protect young fruit plants from chilly winds, cover young fruit plants with straw/polythene sheets/ gunny bags.
- In fruit crops, apply organic mulches after earthing up and weeding to conserve residual soil moisture as well as to maintain the soil temperature.
- Apply Irrigation.

Livestock

- The temperature can be increased by lighting high-wattage bulbs in cowsheds.
- Feed rich grain.
- Vaccinate the cattle to prevent scurvy.
- Give lukewarm water to drink.
- Feed 50-100g mineral mixture daily with feed to maintain cattle health.

Poultry

- Protect the chicken from the cold air with plastic screens or plastic bags on all sides.
- High power bulbs (100 watts or more) in the poultry shed for 1-2 hours after dusk will increase egg production and diseases will reduce.
- Take necessary measures to protect against fungal diseases.
- Vaccinate Spring Disease of Chicken.

- Let the hens out of the coop a little late in the morning and close the coop door in the evening.

Fishery

- Reduce fish density, and transfer to other ponds if necessary.
- Ensure enough water in the pond to avoid the harmful effects of low temperatures.
- Reduce food in winter. Stop feeding if needed.
- Keep clean the pond water.
- Apply lime in the pond to protect fish from various bacterial diseases in winter. (250-500 gm/per decimal)

Bogura Region (Districts: Bogura, Joypurhat, Pabna, Sirajganj)

Wheat

Stage: Vegetative Growth

- At this stage of crop and prevailing weather conditions, monitoring of termite infestation are advised in late sown wheat crop. If termite infestation is observed in the crop field, apply Chlorpyrifos group pesticide is suggested.
- If rats are noticed, arrange net to catch the same or apply zinc phosphide to control the attack of rats.
- Apply irrigation.

Rice Boro

Stage: Seedbed

- It is advised to prepare the seedbed in high land and also make arrangements for draining out of water and also advised for community based seedbed preparation.
- It is better to maintain water level 2-3 cm in seed bed so that it can control the weeds and seed damages due to birds.
- Cover the entire nursery bed in the night time with polythene sheets and remove in the morning to avoid the effect of cool temperatures on germination and growth of nursery. Irrigate the nursery with water in night time and remove water in early morning to speed up nursery growth in cold weather conditions.

Vegetable

- Protect young plants of vegetable from low temperature.
- Present weather condition is favourable for the incidence of yellowish-brown spot in tomato, Spray mancozeb 2.5-3g/litres of water.
- Under cold conditions, there may be infestation of yellow vein mosaic in okra. Farmers are advised to remove all infected plants and destroy them. Disinfect gardening tools after

every use. Control white fly, the vector, by spraying imidacloprid 17.8 SL @ 0.3ml/ liters of water before populations reach high levels.

- Under the prevailing weather condition, monitoring is advised for infestation of fruit borers in brinjal, tomato, chilli. If infestation occurs, installation of pheromone traps @ 3-4 traps per acre is advised.
- Apply Irrigation.

Horticultural

- Protect young plants of horticulture crops from low temperature
- It is advised to cover the small horticulture plants with grass to avoid cold paralysis.
- To protect young fruit plants from chilly winds, cover young fruit plants with straw/polythene sheets/ gunny bags.
- In fruit crops, apply organic mulches after earthing up and weeding to conserve residual soil moisture as well as to maintain the soil temperature.
- Apply Irrigation.

Livestock

- The temperature can be increased by lighting high-wattage bulbs in cowsheds.
- Feed rich grain.
- Vaccinate the cattle to prevent scurvy.
- Give lukewarm water to drink.
- Feed 50-100g mineral mixture daily with feed to maintain cattle health.

Poultry

- Protect the chicken from the cold air with plastic screens or plastic bags on all sides.
- High power bulbs (100 watts or more) in the poultry shed for 1-2 hours after dusk will increase egg production and diseases will reduce.
- Take necessary measures to protect against fungal diseases.
- Vaccinate Spring Disease of Chicken.
- Let the hens out of the coop a little late in the morning and close the coop door in the evening.

Fishery

- Reduce fish density, and transfer to other ponds if necessary.
- Ensure enough water in the pond to avoid the harmful effects of low temperatures.
- Reduce food in winter. Stop feeding if needed.
- Keep clean the pond water.
- Apply lime in the pond to protect fish from various bacterial diseases in winter. (250-500 gm/per decimal)

Wheat

Stage: Vegetative Growth

- At this stage of crop and prevailing weather conditions, monitoring of termite infestation are advised in late sown wheat crop. If termite infestation is observed in the crop field, apply Chlorpyrifos group pesticide is suggested.
- If rats are noticed, arrange net to catch the same or apply zinc phosphide to control the attack of rats.
- Apply irrigation.

Rice Boro

Stage: Tillering

- There is chance of Blast and brown spot attack due to light fog and raised temperature. Apply Trooper 6.0g or Nativo 6.0g/litre water twice in 10-15 days.
- To captivate & control the butterflies, place 2 Pheromone Traps/bigha. Also apply Carbofuran 5g @10kg / ha. or Diazinon 10g @17kg/ha. for its control.
- If noticed, collect the adults using hand net & destroy them by burying under soil or by burning.
- There is a chance of attack of insect/pests like, Rice stemborer, Rice hispa, etc. Constant monitoring is required for its level of incidences.
- Maintain 5-7 cm land water level.
- Apply irrigation.

Vegetable

- Protect young plants of vegetable from low temperature.
- Present weather condition is favourable for the incidence of yellowish-brown spot in tomato, Spray mancozeb 2.5-3g/litres of water.
- Under cold conditions, there may be infestation of yellow vein mosaic in okra. Farmers are advised to remove all infected plants and destroy them. Disinfect gardening tools after every use. Control white fly, the vector, by spraying imidacloprid 17.8 SL @ 0.3ml/ liters of water before populations reach high levels.
- Under the prevailing weather condition, monitoring is advised for infestation of fruit borers in brinjal, tomato, chilli. If infestation occurs, installation of pheromone traps @ 3-4 traps per acre is advised.
- Apply Irrigation.

Horticultural

- Protect young plants of horticulture crops from low temperature
- It is advised to cover the small horticulture plants with grass to avoid cold paralysis.

- To protect young fruit plants from chilly winds, cover young fruit plants with straw/polythene sheets/ gunny bags.
- In fruit crops, apply organic mulches after earthing up and weeding to conserve residual soil moisture as well as to maintain the soil temperature.
- Apply Irrigation.

Livestock

- The temperature can be increased by lighting high-wattage bulbs in cowsheds.
- Feed rich grain.
- Vaccinate the cattle to prevent scurvy.
- Give lukewarm water to drink.
- Feed 50-100g mineral mixture daily with feed to maintain cattle health.

Poultry

- Protect the chicken from the cold air with plastic screens or plastic bags on all sides.
- High power bulbs (100 watts or more) in the poultry shed for 1-2 hours after dusk will increase egg production and diseases will reduce.
- Take necessary measures to protect against fungal diseases.
- Vaccinate Spring Disease of Chicken.
- Let the hens out of the coop a little late in the morning and close the coop door in the evening.

Fishery

- Reduce fish density, and transfer to other ponds if necessary.
- Ensure enough water in the pond to avoid the harmful effects of low temperatures.
- Reduce food in winter. Stop feeding if needed.
- Keep clean the pond water.
- Apply lime in the pond to protect fish from various bacterial diseases in winter. (250-500 gm/per decimal)

Rangamati Region (Districts: Rangamati, Khagrachari and Bandarban)

Rice Boro

Stage: Tillering

- There is chance of Blast and brown spot attack due to light fog and raised temperature. Apply Trooper 6.0g or Nativo 6.0g/litre water twice in 10-15 days.
- To captivate & control the butterflies, place 2 Pheromone Traps/bigha. Also apply Carbofuran 5g @10kg / ha. or Diazinon 10g @17kg/ha. for its control.
- If noticed, collect the adults using hand net & destroy them by burying under soil or by burning.

- There is a chance of attack of insect/pests like, Rice stemborer, Rice hispa, etc. Constant monitoring is required for its level of incidences.
- Apply urea 13 kg/bigha as first top dressing after 15-20 days of transplanting (4-5 tillers/hill).
- Weeding with weeder after top dressing of urea increases the activity of fertilizer.
- Keep the field and irrigation channel weed free. Weeding should be done before application of fertilizer and mixed the fertilizer with soil. Hand weeding or weedicides (viz. Rifit 500EC, Superhit 500 EC. etc. @ 134 ml/bigha) may be used for weed control.
- Maintain 5-7 cm land water level.
- Apply irrigation.

Vegetable

- Present weather is congenial for sucking pests in vegetables; spray recommended pesticides.
- Under the prevailing weather condition, monitoring is advised for infestation of fruit borers in brinjal, tomato, chilli. If infestation occurs, installation of pheromone traps @ 3-4 traps per acre is advised.
- Present weather condition is favourable for the incidence of yellowish-brown spot in tomato, Spray mancozeb 2.5-3g/litres of water.
- Apply Irrigation.

Horticultural

- Weather conditions are congenial for bud rot disease in coconut; spray Bordeaux mixture 1% on spindle leaves and crown of diseased plant as well as neighbouring coconuts plants.
- Under the present weather conditions, there is a chance of an attack of pseudostem weevil to young banana plants of 3-4 months' age. Spray Chlorpyrifos 2 ml/liters of water.
- Apply Irrigation.

Mustard

Stage: Flowering

- Advice for weeding's in mustard fields.

Livestock

- The temperature can be increased by lighting high-wattage bulbs in cowsheds.
- Feed rich grain.
- Give anthelmintic drugs.
- Vaccinate the cattle to prevent scurvy.
- Give lukewarm water to drink.

Poultry

- Protect the chicken from the cold air with plastic screens or plastic bags on all sides.
- High power bulbs (100 watts or more) in the poultry shed for 1-2 hours after dusk will increase egg production and diseases will reduce.
- Vaccinate Spring Disease of Chicken.
- Let the hens out of the coop a little late in the morning and close the coop door in the evening.

Fishery

- Reduce fish density, and transfer to other ponds if necessary.
- Ensure enough water in the pond to avoid the harmful effects of low temperatures.
- Reduce food in winter. Stop feeding if needed.
- Keep clean the pond water.
- Apply lime in the pond to protect fish from various bacterial diseases in winter. (250-500 gm/per decimal)

Barishal Region (Districts: Jhalakati, Patuakhali, Pirujpur, Barguna, Barishal, Bhola)

Wheat

Stage: Vegetative Growth

- If symptoms of sulphur deficiency noticed in wheat crop, broadcast 1.0 Kg gypsum/decimal is advised.
- Farmers are advised to apply 2nd time irrigation at wheat field at 55-60 DAS (panicle initiation stage) for good yield.
- If rats are noticed, arrange net to catch the same or apply 2% Zinc phosphide or Lanirat (3-5g/hole) to control the attack of rats.
- At this stage of crop and prevailing weather conditions, monitoring of termite infestation is advised in late sown wheat crop. If termite infestation is observed in the crop field, apply Chlorpyrifos 20EC @ 4.0 ml/litre in the soil at evening hours.
- Do thinning operations if the plants have been sown in dense condition.
- Apply irrigation.

Rice Boro

Stage: Tillering

- There is chance of Blast and brown spot attack due to light fog and raised temperature. Apply Trooper 6.0g or Nativo 6.0g/litre water twice in 10-15 days.
- To captivate & control the butterflies, place 2 Pheromone Traps/bigha. Also apply Carbofuran 5g @10kg / ha. or Diazinon 10g @17kg/ha. for its control.
- If noticed, collect the adults using hand net & destroy them by burying under soil or by burning.

- There is a chance of attack of insect/pests like, Rice stemborer, Rice hispa, etc. Constant monitoring is required for its level of incidences.
- Apply urea 13 kg/bigha as first top dressing after 15-20 days of transplanting (4-5 tillers/hill).
- Weeding with weeder after top dressing of urea increases the activity of fertilizer.
- Keep the field and irrigation channel weed free. Weeding should be done before application of fertilizer and mixed the fertilizer with soil. Hand weeding or weedicides (viz. Rifit 500EC, Superhit 500 EC. etc. @ 134 ml/bigha) may be used for weed control.
- Maintain 5-7 cm land water level.
- Apply irrigation.

Vegetable

- Present weather is congenial for sucking pests in vegetables; spray recommended pesticides.
- Under the prevailing weather condition, monitoring is advised for infestation of fruit borers in brinjal, tomato, chilli. If infestation occurs, installation of pheromone traps @ 3-4 traps per acre is advised.
- Present weather condition is favourable for the incidence of yellowish-brown spot in tomato, Spray mancozeb 2.5-3g/litres of water.
- Apply Irrigation.

Horticultural

- Weather conditions are congenial for bud rot disease in coconut; spray Bordeaux mixture 1% on spindle leaves and crown of diseased plant as well as neighbouring coconuts plants.
- Under the present weather conditions, there is a chance of an attack of pseudostem weevil to young banana plants of 3-4 months' age. Spray Chlorpyrifos 2 ml/liters of water.
- Apply Irrigation.

Mustard

Stage: Vegetative

- The incidence of sawfly may be seen in the mustard crops. To control this pest spray Chlorpyrifos 20 EC @ 5 ml/litre of water on fair weather.
- Farmers are advised to do intercultural operations after 15-20 days of sowing for conserving the moisture and removing weeds in the mustard crop.
- Apply Irrigation.

Livestock

- Take necessary steps to prevent external parasites.
- The temperature can be increased by lighting high-wattage bulbs in cowsheds.
- Feed rich grain.
- Give anthelmintic drugs.
- Vaccinate the cattle to prevent scurvy.

- Give lukewarm water to drink.

Poultry

- Protect the chicken from the cold air with plastic screens or plastic bags on all sides.
- High power bulbs (100 watts or more) in the poultry shed for 1-2 hours after dusk will increase egg production and diseases will reduce.
- Vaccinate Spring Disease of Chicken.
- Let the hens out of the coop a little late in the morning and close the coop door in the evening.

Fishery

- Ensure enough water in the pond to avoid the harmful effects of low temperatures.
- Reduce food in winter. Stop feeding if needed.
- Apply lime in the pond to protect fish from various bacterial diseases in winter. (250-500 gm/per decimal)

Jashore Region (Districts: Jashore, Kushtia, Chuadanga, Jhenaidah, Meherpur, Magura)

Wheat

Stage: Vegetative Growth

- If symptoms of sulphur deficiency noticed in wheat crop, broadcast 1.0 Kg gypsum/decimal is advised.
- Farmers are advised to apply 2nd time irrigation at wheat field at 55-60 DAS (panicle initiation stage) for good yield.
- If rats are noticed, arrange net to catch the same or apply 2% Zinc phosphide or Lanirat (3-5g/hole) to control the attack of rats.
- At this stage of crop and prevailing weather conditions, monitoring of termite infestation is advised in late sown wheat crop. If termite infestation is observed in the crop field, apply Chlorpyrifos 20EC @ 4.0 ml/litre in the soil at evening hours.
- Do thinning operations if the plants have been sown in dense condition.
- Apply irrigation.

Vegetable

- Present weather is congenial for sucking pests in vegetables; spray recommended pesticides.
- Under the prevailing weather condition, monitoring is advised for infestation of fruit borers in brinjal, tomato, chilli. If infestation occurs, installation of pheromone traps @ 3-4 traps per acre is advised.
- Present weather condition is favourable for the incidence of yellowish-brown spot in tomato, Spray mancozeb 2.5-3g/litres of water.
- Apply Irrigation.

Horticultural

- Weather conditions are congenial for bud rot disease in coconut; spray Bordeaux mixture 1% on spindle leaves and crown of diseased plant as well as neighbouring coconuts plants.
- Under the present weather conditions, there is a chance of an attack of pseudostem weevil to young banana plants of 3-4 months' age. Spray Chlorpyrifos 2 ml/liters of water.
- In fruit crops, apply organic mulches after earthing up and weeding to conserve residual soil moisture as well as to maintain the soil temperature.
- Apply Irrigation.

Mustard

Stage: Pod initiation

- Occurrence of sawfly may be seen in the mustard crops under the present environment conditions. To control this pest spray Chlorpyrifos 20 EC @ 5 ml/litre of water on fair weather.
- The present weather condition is favorable for the incidence of powdery mildew in mustard. Spray of Carbendazim 12% + Mancozeb 62% @ 2g /litre of water is advised.
- Go for intercultural operations.
- Apply light irrigation.

Livestock

- The temperature can be increased by lighting high-wattage bulbs in cowsheds.
- Feed rich grain.
- Give lukewarm water to drink.

Poultry

- Protect the chicken from the cold air with plastic screens or plastic bags on all sides.
- High power bulbs (100 watts or more) in the poultry shed for 1-2 hours after dusk will increase egg production and diseases will reduce.
- Take necessary measures to protect against fungal diseases.
- Let the hens out of the coop a little late in the morning and close the coop door in the evening.

Fishery

- Ensure enough water in the pond to avoid the harmful effects of low temperatures.
- Reduce food in winter. Stop feeding if needed.
- Apply lime in the pond to protect fish from various bacterial diseases in winter. (250-500 gm/per decimal)

Wheat

Stage: Vegetative Growth

- If symptoms of sulphur deficiency noticed in wheat crop, broadcast 1.0 Kg gypsum/decimal is advised.
- Farmers are advised to apply 2nd time irrigation at wheat field at 55-60 DAS (panicle initiation stage) for good yield.
- If rats are noticed, arrange net to catch the same or apply 2% Zinc phosphide or Lanirat (3-5g/hole) to control the attack of rats.
- At this stage of crop and prevailing weather conditions, monitoring of termite infestation is advised in late sown wheat crop. If termite infestation is observed in the crop field, apply Chlorpyrifos 20EC @ 4.0 ml/litre in the soil at evening hours.
- Do thinning operations if the plants have been sown in dense condition.
- Apply irrigation.

Rice Boro

Stage: Tillering

- There is chance of Blast and brown spot attack due to light fog and raised temperature. Apply Trooper 6.0g or Nativo 6.0g/litre water twice in 10-15 days.
- To captivate & control the butterflies, place 2 Pheromone Traps/bigha. Also apply Carbofuran 5g @10kg / ha. or Diazinon 10g @17kg/ha. for its control.
- If noticed, collect the adults using hand net & destroy them by burying under soil or by burning.
- There is a chance of attack of insect/pests like, Rice stemborer, Rice hispa, etc. Constant monitoring is required for its level of incidences.
- Apply urea 13 kg/bigha as first top dressing after 15-20 days of transplanting (4-5 tillers/hill).
- Weeding with weeder after top dressing of urea increases the activity of fertilizer.
- Keep the field and irrigation channel weed free. Weeding should be done before application of fertilizer and mixed the fertilizer with soil. Hand weeding or weedicides (viz. Rifit 500EC, Superhit 500 EC. etc. @ 134 ml/bigha) may be used for weed control.
- Maintain 5-7 cm land water level.
- Apply irrigation.

Vegetable

- Present weather is congenial for sucking pests in vegetables; spray recommended pesticides.
- Under the prevailing weather condition, monitoring is advised for infestation of fruit borers in brinjal, tomato, chilli. If infestation occurs, installation of pheromone traps @ 3-4 traps per acre is advised.

- Present weather condition is favourable for the incidence of yellowish-brown spot in tomato, Spray mancozeb 2.5-3g/litres of water.
- Apply Irrigation.

Horticultural

- Weather conditions are congenial for bud rot disease in coconut; spray Bordeaux mixture 1% on spindle leaves and crown of diseased plant as well as neighbouring coconuts plants.
- Under the present weather conditions, there is a chance of an attack of pseudostem weevil to young banana plants of 3-4 months' age. Spray Chlorpyrifos 2 ml/litres of water.
- In fruit crops, apply organic mulches after earthing up and weeding to conserve residual soil moisture as well as to maintain the soil temperature.
- Apply Irrigation.

Mustard

Stage: Maturity to Harvesting

- Spray 1 kg Cuppor Oxychloride or 800 g Dethane-M 45/acre in 200 litre water to control leaf blight disease.
- Present weather conditions are favourable for incidence of Pod borer. Hand picking followed by burning of the infected parts should be done for its control.
- Advice to harvest mustard if the 80% crop is in matured stage.
- Where plants are found mature complete harvesting --No irrigation should be applied

Livestock

- The temperature can be increased by lighting high-wattage bulbs in sheds.
- Feed rich feed.
- Give lukewarm water to drink.

Poultry

- Protect the chicken from the cold air with plastic screens or plastic bags on all sides.
- High power bulbs (100 watts or more) in the poultry shed for 1-2 hours after dusk will increase egg production and diseases will reduce.
- Take necessary measures to protect against fungal diseases.

Fishery

- Ensure enough water in the pond to avoid the harmful effects of low temperatures.
- Reduce food in winter. Stop feeding if needed.
- Apply lime in the pond to protect fish from various bacterial diseases in winter. (250-500 gm/per decimal)

Dhaka Region (Districts: Dhaka, Tangail, Gazipur, Narsingdi, Narayanganj, Munshiganj, Manikgonj)

Wheat

Stage: Vegetative Growth

- If symptoms of sulphur deficiency noticed in wheat crop, broadcast 1.0 Kg gypsum/decimal is advised.
- Farmers are advised to apply 2nd time irrigation at wheat field at 55-60 DAS (panicle initiation stage) for good yield.
- If rats are noticed, arrange net to catch the same or apply 2% Zinc phosphide or Lanirat (3-5g/hole) to control the attack of rats.
- At this stage of crop and prevailing weather conditions, monitoring of termite infestation is advised in late sown wheat crop. If termite infestation is observed in the crop field, apply Chlorpyrifos 20EC @ 4.0 ml/litre in the soil at evening hours.
- Do thinning operations if the plants have been sown in dense condition.
- Apply irrigation.

Rice Boro

Stage: Tillering

- There is chance of Blast and brown spot attack due to light fog and raised temperature. Apply Trooper 6.0g or Nativo 6.0g/litre water twice in 10-15 days.
- To captivate & control the butterflies, place 2 Pheromone Traps/bigha. Also apply Carbofuran 5g @10kg / ha. or Diazinon 10g @17kg/ha. for its control.
- If noticed, collect the adults using hand net & destroy them by burying under soil or by burning.
- There is a chance of attack of insect/pests like, Rice stemborer, Rice hispa, etc. Constant monitoring is required for its level of incidences.
- Apply urea 13 kg/bigha as first top dressing after 15-20 days of transplanting (4-5 tillers/hill).
- Weeding with weeder after top dressing of urea increases the activity of fertilizer.
- Keep the field and irrigation channel weed free. Weeding should be done before application of fertilizer and mixed the fertilizer with soil. Hand weeding or weedicides (viz. Rifit 500EC, Superhit 500 EC. etc. @ 134 ml/bigha) may be used for weed control.
- Maintain 5-7 cm land water level.
- Apply irrigation.

Vegetable

- Present weather is congenial for sucking pests in vegetables; spray recommended pesticides.
- Under the prevailing weather condition, monitoring is advised for infestation of fruit borers in brinjal, tomato, chilli. If infestation occurs, installation of pheromone traps @ 3-4 traps per acre is advised.

- Present weather condition is favourable for the incidence of yellowish-brown spot in tomato, Spray mancozeb 2.5-3g/litres of water.
- Apply Irrigation.

Horticultural

- Weather conditions are congenial for bud rot disease in coconut; spray Bordeaux mixture 1% on spindle leaves and crown of diseased plant as well as neighbouring coconuts plants.
- Under the present weather conditions, there is a chance of an attack of pseudostem weevil to young banana plants of 3-4 months' age. Spray Chlorpyrifos 2 ml/liters of water.
- In fruit crops, apply organic mulches after earthing up and weeding to conserve residual soil moisture as well as to maintain the soil temperature.
- Apply Irrigation.

Mustard

Stage: Flowering

- Advice for weeding's in mustard fields.

Livestock

- Take necessary steps to prevent external parasites.
- The temperature can be increased by lighting high-wattage bulbs in cowsheds.
- Feed rich grain.
- Give anthelmintic drugs.
- Vaccinate the cattle to prevent scurvy.
- Give lukewarm water to drink.
- Feed 50-100g mineral mixture daily with feed to maintain cattle health.

Poultry

- Keep the poultry shed clean and dry.
- Take necessary measures to protect against fungal diseases.
- Vaccinate Spring Disease of Chicken.
- Let the hens out of the coop a little late in the morning and close the coop door in the evening.

Fishery

- Reduce fish density, and transfer to other ponds if necessary.
- Ensure enough water in the pond to avoid the harmful effects of low temperatures.
- Reduce food in winter. Stop feeding if needed.
- Keep clean the pond water.
- Apply lime in the pond to protect fish from various bacterial diseases in winter. (250-500 gm/per decimal)

Chattogram region (Districts: Chattogram, Lakshmipur, Coxsbazar, Noakhali and Feni)

Rice Boro

Stage: Tillering

- There is chance of Blast and brown spot attack due to light fog and raised temperature. Apply Trooper 6.0g or Nativo 6.0g/litre water twice in 10-15 days.
- To captivate & control the butterflies, place 2 Pheromone Traps/bigha. Also apply Carbofuran 5g @10kg / ha. or Diazinon 10g @17kg/ha. for its control.
- If noticed, collect the adults using hand net & destroy them by burying under soil or by burning.
- There is a chance of attack of insect/pests like, Rice stemborer, Rice hispa, etc. Constant monitoring is required for its level of incidences.
- Apply urea 13 kg/bigha as first top dressing after 15-20 days of transplanting (4-5 tillers/hill).
- Weeding with weeder after top dressing of urea increases the activity of fertilizer.
- Keep the field and irrigation channel weed free. Weeding should be done before application of fertilizer and mixed the fertilizer with soil. Hand weeding or weedicides (viz. Rifit 500EC, Superhit 500 EC. etc. @ 134 ml/bigha) may be used for weed control.
- Maintain 5-7 cm land water level.
- Apply irrigation.

Vegetable

- Present weather is congenial for sucking pests in vegetables; spray recommended pesticides.
- Under the prevailing weather condition, monitoring is advised for infestation of fruit borers in brinjal, tomato, chilli. If infestation occurs, installation of pheromone traps @ 3-4 traps per acre is advised.
- Present weather condition is favourable for the incidence of yellowish-brown spot in tomato, Spray mancozeb 2.5-3g/litres of water.
- Apply Irrigation.

Horticultural

- Weather conditions are congenial for bud rot disease in coconut; spray Bordeaux mixture 1% on spindle leaves and crown of diseased plant as well as neighbouring coconuts plants.
- Under the present weather conditions, there is a chance of an attack of pseudostem weevil to young banana plants of 3-4 months' age. Spray Chlorpyrifos 2 ml/liters of water.
- In fruit crops, apply organic mulches after earthing up and weeding to conserve residual soil moisture as well as to maintain the soil temperature.
- Apply Irrigation.

Mustard

Stage: Vegetative

- Present weather conditions and at this stage of crop, the incidence of sawfly may be seen in the mustard crops. To control this pest spray Chlorpyrifos 20 EC @ 5 ml/litre of water on fair weather.
- Farmers are advised to do intercultural operations after 15-20 days of sowing for conserving the moisture and removing weeds in the mustard crop.
- Apply light irrigation.

Livestock

- Take necessary steps to prevent external parasites.
- The temperature can be increased by lighting high-wattage bulbs in cowsheds.
- Feed rich grain.
- Give anthelmintic drugs.
- Vaccinate the cattle to prevent scurvy.
- Give lukewarm water to drink.
- Feed 50-100g mineral mixture daily with feed to maintain cattle health.

Poultry

- Keep the poultry shed clean and dry.
- Protect the chicken from the cold air with plastic screens or plastic bags on all sides.
- High power bulbs (100 watts or more) in the poultry shed for 1-2 hours after dusk will increase egg production and diseases will reduce.
- Take necessary measures to protect against fungal diseases.
- Vaccinate Spring Disease of Chicken.
- Let the hens out of the coop a little late in the morning and close the coop door in the evening.

Fishery

- Reduce fish density, and transfer to other ponds if necessary.
- Ensure enough water in the pond to avoid the harmful effects of low temperatures.
- Reduce food in winter. Stop feeding if needed.
- Keep clean the pond water.
- Apply lime in the pond to protect fish from various bacterial diseases in winter. (250-500 gm/per decimal)

Cumilla Region (Districts: Cumilla, Chandpur, Bramanbaria)

Wheat

Stage: Germination

- Monitoring of zinc deficiency is advised in normal sown wheat crop. If deficiency occurs, spray zinc sulphate hepta ($ZnSO_4 \cdot 7H_2O$) @ 2g/litre water.

- At this stage of crop and prevailing weather conditions there is chance of attack of Leaf spot (*Bipolaris* leaf spot) disease in wheat. If noticed spray with fungicide Tilt-250EC @ 0.5ml/litre water 2-3 times at 12-15 days interval.
- If symptoms of sulphur deficiency noticed in wheat crop, broadcast gypsum 1.0 Kg/ dsml. followed by a light irrigation is advised.
- Herbicides viz., 2, 4-D Amine, Affinity or Fielder could be applied at the rate of 3.5ml/ litre of water for controlling broad leaf weeds and must be sprayed between 25 and 30 DAS in sunny days.
- Farmers are advised to do intercultural operations for conserving the moisture and keep the land weed free within 25-30 days after sowing.
- First irrigation should be very light and excess water should be drained out immediately. Do not allow standing water in the field as this will turn the green leaf to yellow in colour and also may damage the seedlings.
- Farmers are advised to apply first irrigation at 3-leaves stage i.e., 17-21 days after sowing (DAS) at Crown Root Initiation stage for good yield.
- Apply light irrigation.

Rice Boro

Stage: Tillering

- There is chance of Blast and brown spot attack due to light fog and raised temperature. Apply Trooper 6.0g or Nativo 6.0g/litre water twice in 10-15 days.
- To captivate & control the butterflies, place 2 Pheromone Traps/bigha. Also apply Carbofuran 5g @10kg / ha. or Diazinon 10g @17kg/ha. for its control.
- If noticed, collect the adults using hand net & destroy them by burying under soil or by burning.
- There is a chance of attack of insect/pests like, Rice stemborer, Rice hispa, etc. Constant monitoring is required for its level of incidences.
- Apply urea 13 kg/bigha as first top dressing after 15-20 days of transplanting (4-5 tillers/hill).
- Weeding with weeder after top dressing of urea increases the activity of fertilizer.
- Keep the field and irrigation channel weed free. Weeding should be done before application of fertilizer and mixed the fertilizer with soil. Hand weeding or weedicides (viz. Rifit 500EC, Superhit 500 EC. etc. @ 134 ml/bigha) may be used for weed control.
- Maintain 5-7 cm land water level.
- Apply irrigation.

Vegetable

- Present weather is congenial for sucking pests in vegetables; spray recommended pesticides.
- Under the prevailing weather condition, monitoring is advised for infestation of fruit borers in brinjal, tomato, chilli. If infestation occurs, installation of pheromone traps @ 3-4 traps per acre is advised.
- Present weather condition is favourable for the incidence of yellowish-brown spot in tomato, Spray mancozeb 2.5-3g/litres of water.

- Apply Irrigation.

Horticultural

- Weather conditions are congenial for bud rot disease in coconut; spray Bordeaux mixture 1% on spindle leaves and crown of diseased plant as well as neighbouring coconuts plants.
- Under the present weather conditions, there is a chance of an attack of pseudostem weevil to young banana plants of 3-4 months' age. Spray Chlorpyrifos 2 ml/liters of water.
- In fruit crops, apply organic mulches after earthing up and weeding to conserve residual soil moisture as well as to maintain the soil temperature.
- Apply Irrigation.

Mustard

Stage: Pod initiation

- Occurrence of sawfly may be seen in the mustard crops under the present environment conditions. To control this pest spray Chlorpyrifos 20 EC @ 5 ml/litre of water on fair weather.
- The present weather condition is favorable for the incidence of powdery mildew in mustard. Spray of Carbendazim 12% + Mancozeb 62% @ 2g /litre of water is advised.
- Go for intercultural operations.
- Apply light irrigation.

Livestock

- Take necessary steps to prevent external parasites.
- The temperature can be increased by lighting high-wattage bulbs in cowsheds.
- Feed rich grain.
- Give anthelmintic drugs.
- Vaccinate the cattle to prevent scurvy.
- Give lukewarm water to drink.
- Feed 50-100g mineral mixture daily with feed to maintain cattle health.

Poultry

- Keep the poultry shed clean and dry.
- Protect the chicken from the cold air with plastic screens or plastic bags on all sides.
- High power bulbs (100 watts or more) in the poultry shed for 1-2 hours after dusk will increase egg production and diseases will reduce.
- Take necessary measures to protect against fungal diseases.
- Vaccinate Spring Disease of Chicken.
- Let the hens out of the coop a little late in the morning and close the coop door in the evening.

Fishery

- Reduce fish density, and transfer to other ponds if necessary.
- Ensure enough water in the pond to avoid the harmful effects of low temperatures.
- Reduce food in winter. Stop feeding if needed.
- Keep clean the pond water.
- Apply lime in the pond to protect fish from various bacterial diseases in winter. (250-500 gm/per decimal)

Khulna Region (Districts: Khulna, Satkhira, Bagerhat and Narail)

Wheat

Stage: Vegetative Growth

- If symptoms of sulphur deficiency noticed in wheat crop, broadcast 1.0 Kg gypsum/decimal is advised.
- Farmers are advised to apply 2nd time irrigation at wheat field at 55-60 DAS (panicle initiation stage) for good yield.
- If rats are noticed, arrange net to catch the same or apply 2% Zinc phosphide or Lanirat (3-5g/hole) to control the attack of rats.
- At this stage of crop and prevailing weather conditions, monitoring of termite infestation is advised in late sown wheat crop. If termite infestation is observed in the crop field, apply Chlorpyrifos 20EC @ 4.0 ml/litre in the soil at evening hours.
- Do thinning operations if the plants have been sown in dense condition.
- Apply irrigation.

Vegetable

- Present weather is congenial for sucking pests in vegetables; spray recommended pesticides.
- Under the prevailing weather condition, monitoring is advised for infestation of fruit borers in brinjal, tomato, chilli. If infestation occurs, installation of pheromone traps @ 3-4 traps per acre is advised.
- Present weather condition is favourable for the incidence of yellowish-brown spot in tomato, Spray mancozeb 2.5-3g/litres of water.
- Apply Irrigation.

Horticultural

- Weather conditions are congenial for bud rot disease in coconut; spray Bordeaux mixture 1% on spindle leaves and crown of diseased plant as well as neighbouring coconuts plants.
- Under the present weather conditions, there is a chance of an attack of pseudostem weevil to young banana plants of 3-4 months' age. Spray Chlorpyrifos 2 ml/liters of water.
- In fruit crops, apply organic mulches after earthing up and weeding to conserve residual soil moisture as well as to maintain the soil temperature.
- Apply Irrigation.

Mustard

Stage: Maturity to Harvesting

- Spray 1 kg Cuppor Oxychloride or 800 g Dethane-M 45/acre in 200 litre water to control leaf blight disease.
- Be watchful for aphids in the mustard crop. If seen, spray of Malathion @2ml/ L water.
- Present weather may favour the infestation of leaf webber. To control leaf webber spray 200 ml Ithofenprox or Deltamethrin per acre.
- Present weather conditions are favourable for incidence of Pod borer. Hand picking followed by burning of the infected parts should be done for its control.
- Advice to harvest mustard if the 80% crop is in matured stage.
- Where plants are found mature complete harvesting --No irrigation should be applied

Livestock

- Take necessary steps to prevent external parasites.
- The temperature can be increased by lighting high-wattage bulbs in cowsheds.
- Feed rich grain.
- Give anthelmintic drugs.
- Vaccinate the cattle to prevent scurvy.
- Give lukewarm water to drink.
- Feed 50-100g mineral mixture daily with feed to maintain cattle health.

Poultry

- Keep the poultry shed clean and dry.
- Protect the chicken from the cold air with plastic screens or plastic bags on all sides.
- High power bulbs (100 watts or more) in the poultry shed for 1-2 hours after dusk will increase egg production and diseases will reduce.
- Take necessary measures to protect against fungal diseases.
- Vaccinate Spring Disease of Chicken.
- Let the hens out of the coop a little late in the morning and close the coop door in the evening.

Fishery

- Reduce fish density, and transfer to other ponds if necessary.
- Ensure enough water in the pond to avoid the harmful effects of low temperatures.
- Reduce food in winter. Stop feeding if needed.
- Keep clean the pond water.
- Apply lime in the pond to protect fish from various bacterial diseases in winter. (250-500 gm/per decimal)

Mymensingh Region (Districts: Mymensingh, Kishoregonj, Jamalpur, Netrokona, Sherpur)

Wheat

Stage: Vegetative Growth

- If symptoms of sulphur deficiency noticed in wheat crop, broadcast 1.0Kg gypsum/decimal is advised.
- Farmers are advised to apply 2nd time irrigation at wheat field at 55-60 DAS (panicle initiation stage) for good yield.
- If rats are noticed, arrange net to catch the same or apply 2% Zinc phosphide or Lanirat (3-5g/hole) to control the attack of rats.
- At this stage of crop and prevailing weather conditions, monitoring of termite infestation is advised in late sown wheat crop. If termite infestation is observed in the crop field, apply Chlorpyrifos 20EC @ 4.0 ml/litre in the soil at evening hours.
- Do thinning operations if the plants have been sown in dense condition.
- Apply irrigation.

Rice Boro

Stage: Tillering

- There is chance of Blast and brown spot attack due to light fog and raised temperature. Apply Trooper 6.0g or Nativo 6.0g/litre water twice in 10-15 days.
- To captivate & control the butterflies, place 2 Pheromone Traps/bigha. Also apply Carbofuran 5g @10kg / ha. or Diazinon 10g @17kg/ha. for its control.
- If noticed, collect the adults using hand net & destroy them by burying under soil or by burning.
- There is a chance of attack of insect/pests like, Rice stemborer, Rice hispa, etc. Constant monitoring is required for its level of incidences.
- Apply urea 13 kg/bigha as first top dressing after 15-20 days of transplanting (4-5 tillers/hill).
- Weeding with weeder after top dressing of urea increases the activity of fertilizer.
- Keep the field and irrigation channel weed free. Weeding should be done before application of fertilizer and mixed the fertilizer with soil. Hand weeding or weedicides (viz. Rifit 500EC, Superhit 500 EC. etc. @ 134 ml/bigha) may be used for weed control.
- Maintain 5-7 cm land water level.
- Apply irrigation.

Vegetable

- Present weather is congenial for sucking pests in vegetables; spray recommended pesticides.
- Under the prevailing weather condition, monitoring is advised for infestation of fruit borers in brinjal, tomato, chilli. If infestation occurs, installation of pheromone traps @ 3-4 traps per acre is advised.
- Present weather condition is favourable for the incidence of yellowish-brown spot in tomato, Spray mancozeb 2.5-3g/litres of water.
- Apply Irrigation.

Horticultural

- Weather conditions are congenial for bud rot disease in coconut; spray Bordeaux mixture 1% on spindle leaves and crown of diseased plant as well as neighbouring coconuts plants.
- Under the present weather conditions, there is a chance of an attack of pseudostem weevil to young banana plants of 3-4 months' age. Spray Chlorpyrifos 2 ml/liters of water.
- In fruit crops, apply organic mulches after earthing up and weeding to conserve residual soil moisture as well as to maintain the soil temperature.
- Apply Irrigation.

Mustard

Stage: Flowering

- Advice for weeding in mustard fields.

Livestock

- Take necessary steps to prevent external parasites.
- The temperature can be increased by lighting high-wattage bulbs in cowsheds.
- Feed rich grain.
- Give anthelmintic drugs.
- Vaccinate the cattle to prevent scurvy.
- Give lukewarm water to drink.
- Feed 50-100g mineral mixture daily with feed to maintain cattle health.

Poultry

- Keep the poultry shed clean and dry.
- Take necessary measures to protect against fungal diseases.
- Vaccinate Spring Disease of Chicken.
- Let the hens out of the coop a little late in the morning and close the coop door in the evening.

Fishery

- Reduce fish density, and transfer to other ponds if necessary.
- Ensure enough water in the pond to avoid the harmful effects of low temperatures.
- Reduce food in winter. Stop feeding if needed.
- Keep clean the pond water.
- Apply lime in the pond to protect fish from various bacterial diseases in winter. (250-500 gm/per decimal)