



# NATIONAL AGROMETEOROLOGICAL ADVISORY SERVICE BULLETIN

03 FEBRUARY 2021 (WEDNESDAY)  
[FOR THE PERIOD 03.02.2021 – 07.02.2021]



## DISCLAIMER

Under the Agro-meteorological Information System Development Project, Agromet Advisory Service Bulletins at National & Sixty Four (64) districts have been prepared on experimental basis. These bulletins are being displayed through the website of Department of Agricultural Extension for valuable comments/ suggestions from all concerned.

Please Contact: Farhana Hoque, Sabuj Roy | E-mail: [rdamisd@dae.gov.bd](mailto:rdamisd@dae.gov.bd)  
Phone No.: 02-55'028414, 02-55028418

## ISSUED BY

Agro-Meteorological Information Systems  
Development Project  
Department of Agricultural Extension (DAE)  
Ministry of Agriculture  
In collaboration with Bangladesh  
Meteorological Department

## **Special Agromet Advisories for CORONA virus (COVID-19) transmission in Bangladesh**

### **Agromet Advisories**

Farmers and all other farm managements are advised to follow the guidelines of Government of Bangladesh to avoid infection and social transmission of CORONA virus (COVID-19). Precautions and safety measures should be taken up to prevent the Carona virus spread. Simple measures include social distancing, maintaining personal hygiene by washing hands with soap, wearing of face mask, drink hot water, stay at home and cleaning of implements and machinery. Farmers should not work in a group; consult with a doctor in case of any symptom. Please stay at home does not visit the field until it is very necessary.

### **Salient Weather Conditions & Forecast**

As per the weather forecast of Bangladesh Meteorological Department (BMD) during next 24 hours' weather may remain dry over the country. Light to moderate fog may occur over the country during mid night to morning. Night and day temperature may rise slightly over the country. Mild to moderate cold wave is sweeping over Rangpur & Rajshahi divisions and the regions of Jashore, Kushtia, Satkhira, Barishal, Bhola Tangail, Gopalganj, Sitakunda & Srimangal and it may abate from some places. As per the outlook issued by BMD for next 72 hours is likely temperature may rise. During last four days, no rainfall occurred over the district and as per the quantitative medium range weather forecast; no rainfall is likely during next five days. Detail Agromet advisory are given below:

#### **Boro paddy**

##### **Seedbed**

- Seedbed should be covered with transparent polythene from 10 am to evening during cold wave and remove in the evening.
- Remove the dew deposited in every morning hours on seedlings.
- In the early stages of the disease, 2 ml of Azoxystrobin or Pyraclostrobin should be mixed in one liter of water and sprayed in the afternoon in the seedbed to control seedling burns.
- If the seedbed becomes yellow, apply urea at the rate of 283 gm urea per decimal. If the seedlings are not green even after application of urea, gypsum fertilizer should be applied at the rate of 400 gm per decimal of land.
- Use light traps to protect the seedbed from the attack of brown plan hoppers. Catch the insects with the hand net and kill them. If the attack is high apply 125 ml imidacloprid per hectare.
- In case of thrips infestation, apply nitrogen fertilizer on the affected land. In case of high infestation apply 1.12 liters of malathion or 1.6 kg carbaryl or 1.12 kg isoprocarb / MIPC per hectare

#### **Wheat**

- Provide first irrigation during three leaves of seedlings (17-21 days after sowing), second irrigation during heading (50-55 days after sowing) and third irrigation during grain formation (75-80 days after sowing).
- Due to the rain, during heading of wheat are wet for 12-24 hours and the temperature is 16 degrees Celsius or more than that can lead to blast infection. Once during heading out as a preventive measure to control the disease, it is necessary to spray Navito 75 WG or Navita 75 WG at the rate of 6 gm in 10 liters of water once and after 12-15 days.

### **Maize**

- Provide first irrigation within 15-20 days of sowing, second irrigation within 30-35 days, third irrigation within 60-70 days and fourth irrigation within 65-69 days.
- Care should be taken to ensure that no water accumulates in the soil during flowering and grain formation of maize.

### **Potato**

- Provide irrigation as required.
- Insect attack can occur in potato cut worm. When you see an infected cut potato plant, turn the soil around it, find the worms, collect them and kill them. Insect infestation can be reduced by applying Sex Pheromone Trap + Furadan 5g (Carbofuran) 20 kg / ha during land preparation and before final irrigation.
- Late blight is more likely to occur in the current weather. In this condition, to prevent the disease, the approved fungicide of Mancozeb group should be sprayed at the rate of 2 gm per liter of water after 7 days and the plant should be well soaked. In case of disease, irrigation should be stopped in the affected land till the disease is controlled. As soon as the disease occurs in one's own field or in the surrounding field, the plant should be well watered by spraying the approved fungicide.

### **Mustard**

- Aphid can attack the mustard plant during flowering and fruiting. Only 50 gms of neem seeds should be broken, soaked in 1 liter of water for 12 hours, mixed with 2-3 gms of powdered soap and sprayed twice every 7 days. In case of severe infestation, Malathion 57 EC should be mixed in 2 ml per liter of water and sprayed twice in 10 days interval after 3 pm.
- In cold and humid weather, mustard stem rot can be attacked. As soon as the disease appears, apply Rovral 2.0 g / liter in water 3 times (growth stage, flower and grain formation stage).
- Provide irrigation as required.

### **Vegetables**

- Apply light irrigation.

- In case of infestation of *eggplant* tip and fruit borer insects, cut and destroy the affected tip along with the insects. Insect reproduction is likely to be greatly reduced by using pheromone traps. Use spray of approval dose of insecticides, if necessary or recommended local organic insecticides may be used.
- In case of infestation of fruit borers in bean, control the insects by using IPM method
- In case of fly infestation in pumpkin vegetables, use pheromone and poison traps together. Pesticides of alpha ciphermethrin group can be used.
- In case of powdery mildew in pumpkin vegetables, apply hexaconazole or mencozeb.
- In case of Aphid attack in vegetables, use the approved dose of Malathion group pesticide.
- In case of mite infestation in chilli, 1 kg half-broken neem seeds in 20 liters of water for 24 hours and spray the water (after chopping) on the underside of the leaves. If the infestation is severe, spray the spider mite 57 EC at the rate of 2.0 ml per liter of water or Vertimek 1.8 EC at the rate of 12 ml per 10 liters of water.

### Horticultural crops

- Farmers are advised to go for inter cultural operations in mango orchard.
- In case of symptoms of Sigatoka disease on banana leaves, 0.5 ml of Score or 2 g of ***Noin or Bavistin*** or ***0.1 ml of Econazole / Folico*** should be mixed in every liter of water and sprayed 2-3 times at intervals of 15-20 days.
- In case of banana beetle infestation, apply ***Isoprocarb / MIPC*** group pesticides.
- In order to control coconut mite, miticide should be applied to the affected trees by cutting and burning the young coconut. In addition, miticide should be applied on the leaves of young trees in the vicinity.
- If millibugs attack guava, apply approved pesticides. This insect can also be controlled by spraying powdered soap at the rate of 05 g per liter of water.
- Take necessary action in case of infestation of fruit flies in guava.
- Apply light irrigation as required.

### Livestock

- Livestock should be given urea processed straw as well as granular food especially oil cake and pulses husk.
- Vaccinate the cattle to prevent disease.
- Keep the cattle house dry and clean.
- Black cloth or sacks can be used around the house and hay on the floor at night to prevent cold.

### Poultry

- Vaccinate the chickens regularly to prevent disease.
- Keep the cattle house dry and clean. Keep the fence tight to prevent cold winds
- Black polythene or sacks can be used around the chicken's house to protect the cold and rice husk on the floor to resist the cold.

### **Fishery**

- If there are leaves fall trees on the banks of the pond, clean the leaves regularly.
- If the pH in the pond water is between 6-8, apply 1 kg of dolochun and 1 kg of salt per decimal every 15 to 20 days or every one month at the beginning of winter. If the pH is low, the amount of lime should be increased.
- When the water level in the pond decreases in winter, supply water as required; keep the concentration of fish normal or low.
- If the pond water is contaminated, change the water

## Realized Weather at different locations in the country

Rainfall for last 24 hours (till 09 AM on 03 February 2021) and maximum temperature on 02 February and minimum temperature on 03 February 2021 is given below:

Name of Divisions	Name of Stations	Rain fall (mm)	Max. Temp (°C)	Min. Temp (°C)	Name of Divisions	Name of Stations	Rain fall (mm)	Max. Temp (°C)	Min. Temp (°C)
Dhaka	Dhaka	00	25.4	14.1	Rajshahi	Rajshahi	00	24.6	07.5
	Tangail	00	25.2	09.4		Ishurdi	00	24.5	08.0
	Faridpur	00	25.4	10.4		Bogura	00	24.5	10.2
	Madaripur	00	25.0	10.2		Badalgachhi	00	23.5	08.9
	Gopalganj	00	25.2	09.3		Tarash	00	23.3	11.0
	Nikli	00	24.7	12.5		Rangpur	Rangpur	00	25.3
Mymensingh	Mymensingh	00	25.3	12.4	Dinajpur		00	23.4	08.6
	Netrokona	00	25.3	12.5	Sayedpur		00	25.5	09.8
Chattogram	Chattogram	00	24.8	13.0	Tetulia		00	24.8	<u>06.8</u>
	Sandwip	00	26.7	12.2	Dimla		00	24.3	09.9
	Sitakunda	00	27.8	10.0	Rajarhat		00	26.0	08.4
	Rangamati	00	25.5	10.5	Khulna	Khulna	00	25.0	10.5
	Cumilla	00	25.5	10.5		Mongla	00	25.2	11.5
	Chandpur	00	25.2	11.2		Satkhira	00	24.5	09.0
	M.Court	00	25.2	13.2		Jashore	00	25.4	08.6
	Feni	00	26.0	10.5		Chuadanga	00	24.0	07.3
	Hatiya	00	25.4	12.3		Kumarkhali	00	24.5	10.0
	Sylhet	Cox's Bazar	00	25.5	13.5	Barishal	Barishal	00	25.5
Kutubdia		00	24.7	14.2	Patuakhali		00	25.4	11.2
Teknaf		xx	<u>28.3</u>	xx	Khepupara		00	26.0	10.6
					Bhola		00	26.0	09.9

### Highlights:

- Country average bright sunshine hour was 5.48 hours per day during last week.
- Country average free water loss during the previous week was 2.69 mm per day.

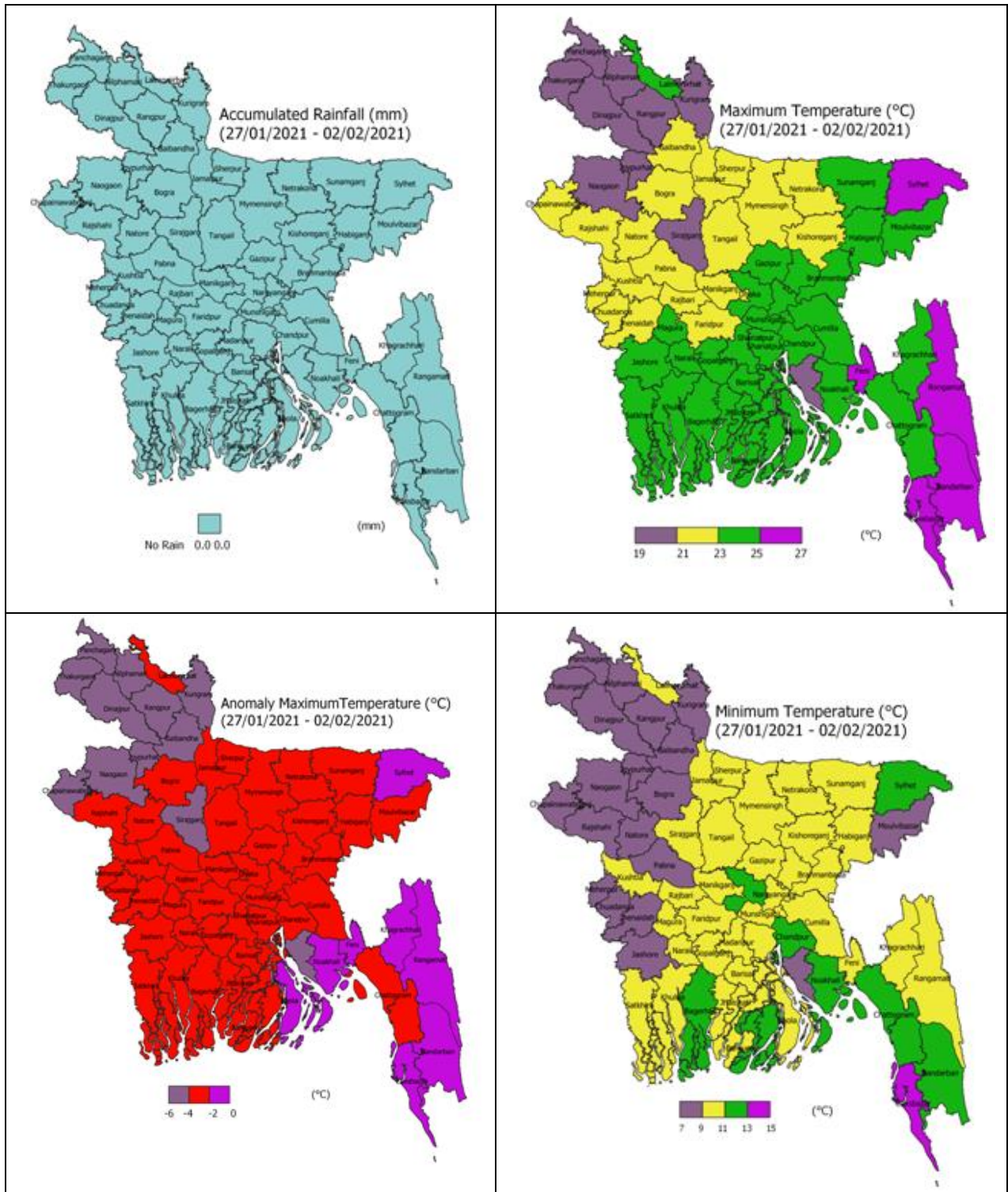
### Weather Forecast Valid for 24 Hours commencing 06 PM Today:

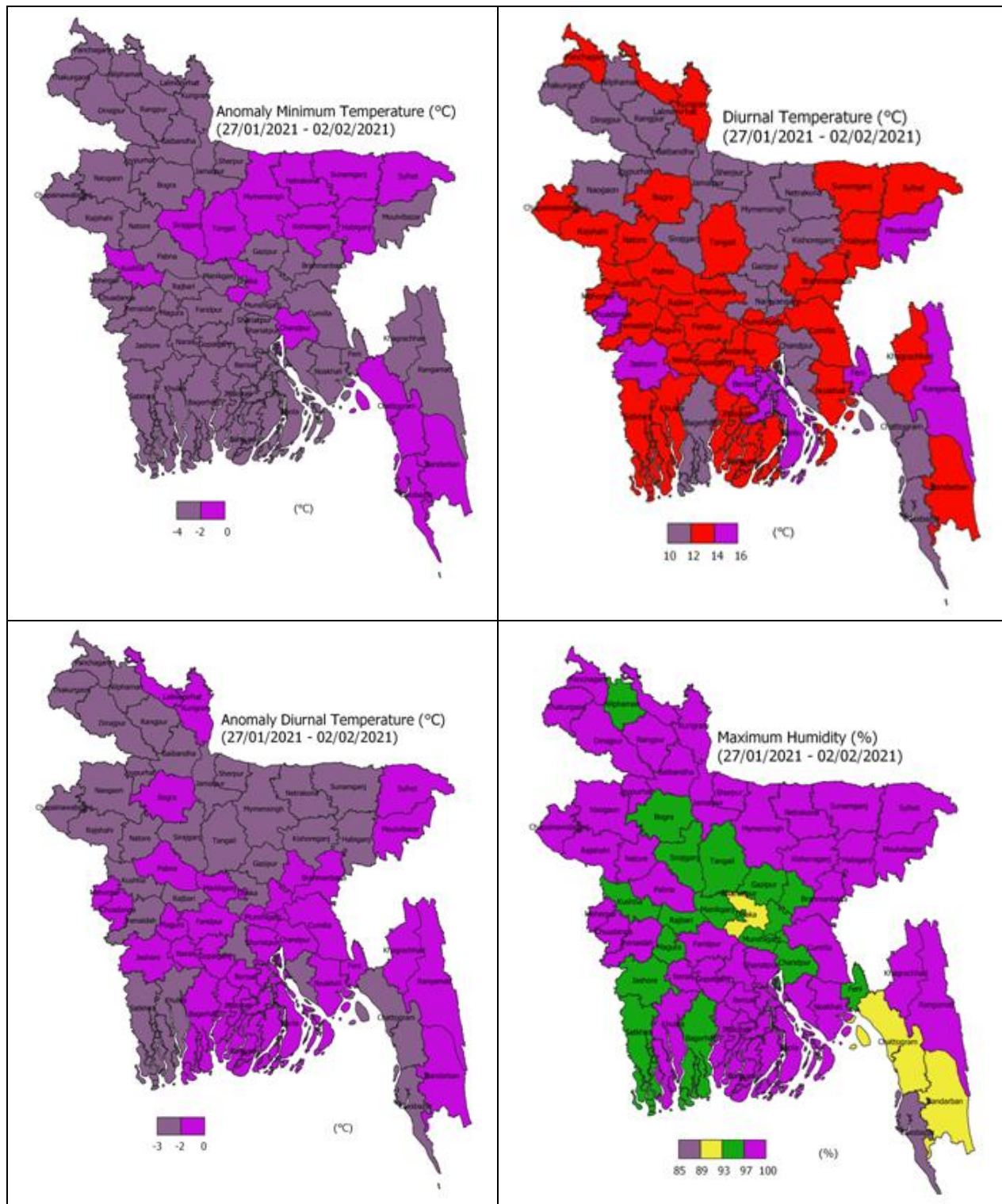
**Forecast:** Weather may remain dry over the country. Light to moderate fog may occur over the country during midnight to morning.

**Temperature:** Night and day temperature may rise slightly over the country.

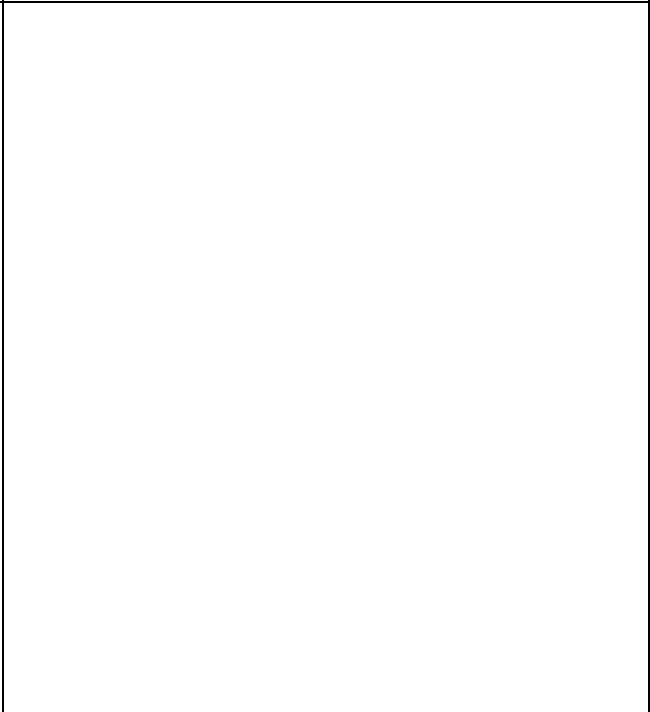
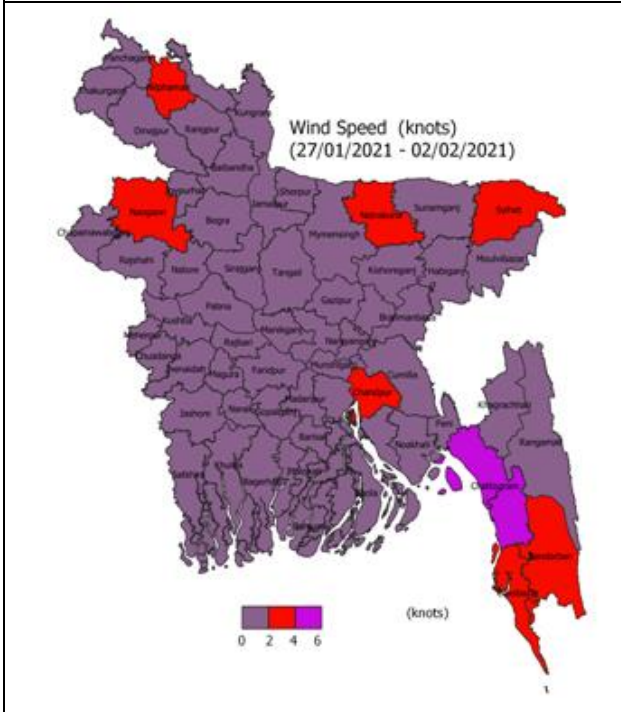
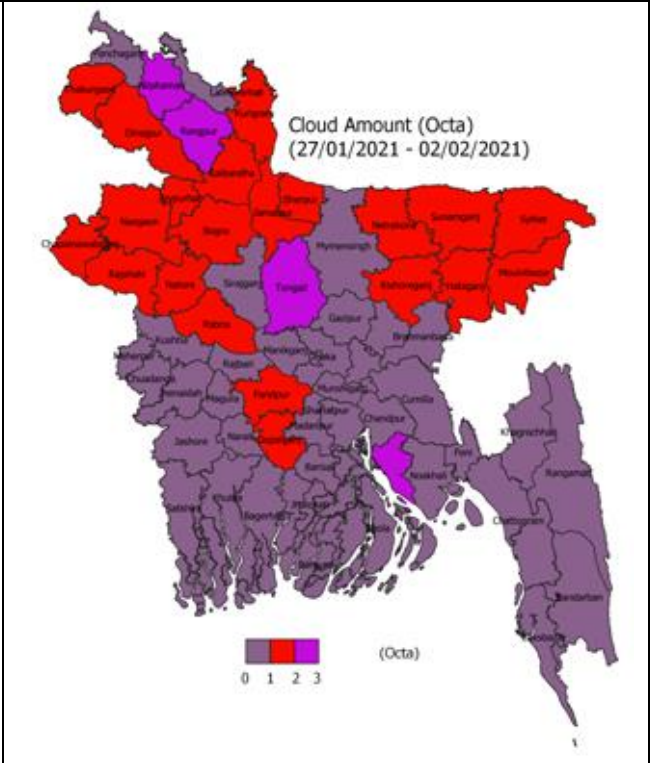
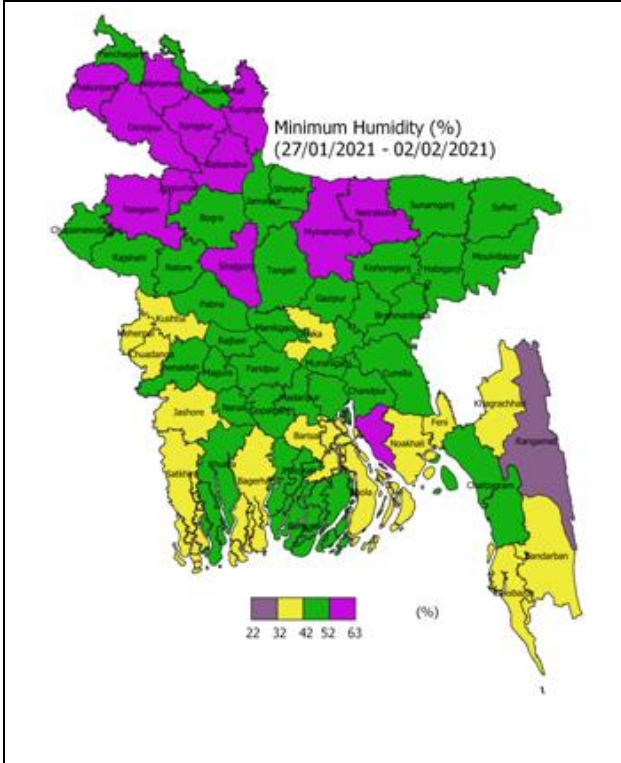
**Cold Wave:** Mild to moderate cold wave is sweeping over Rangpur & Rajshahi divisions and the regions of Jashore, Kushtia, Satkhira, Barishal, Bhola Tangail, Gopalganj, Sitakunda & Srimangal and it may abate from some places.

Spatial Distribution of weather parameters for the Week ending 02 February 2021







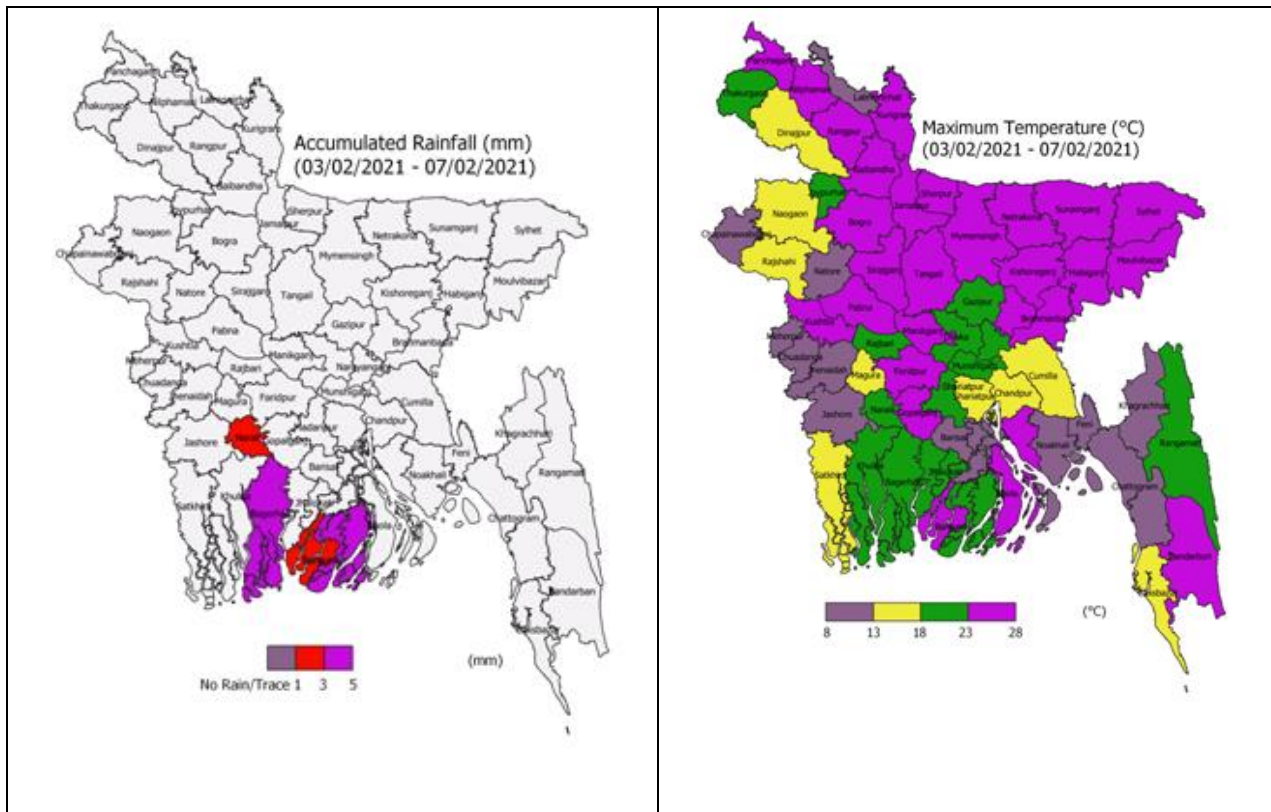


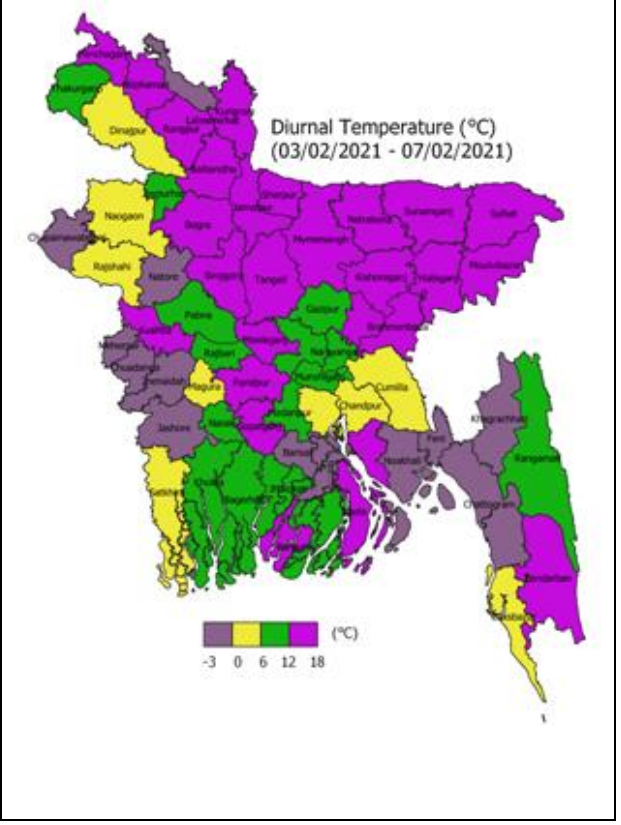
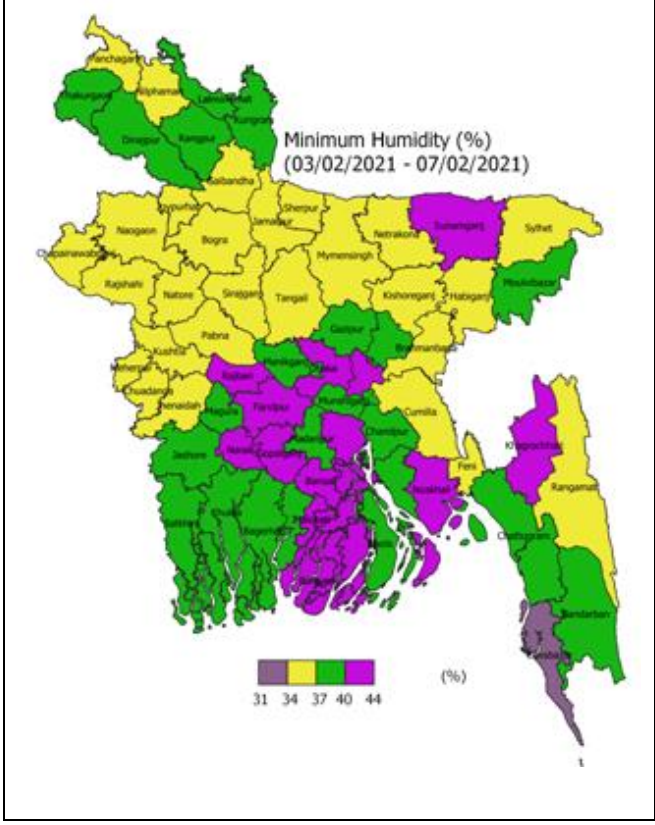
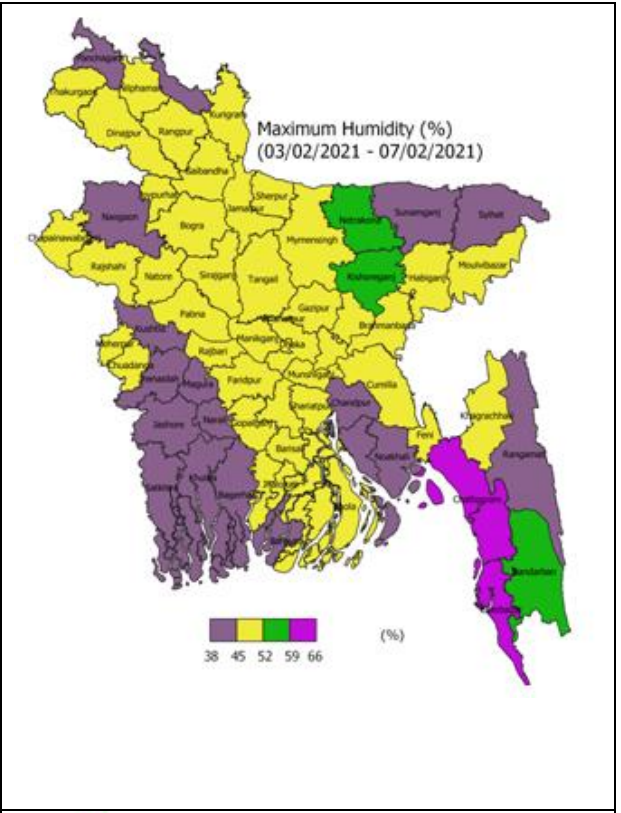
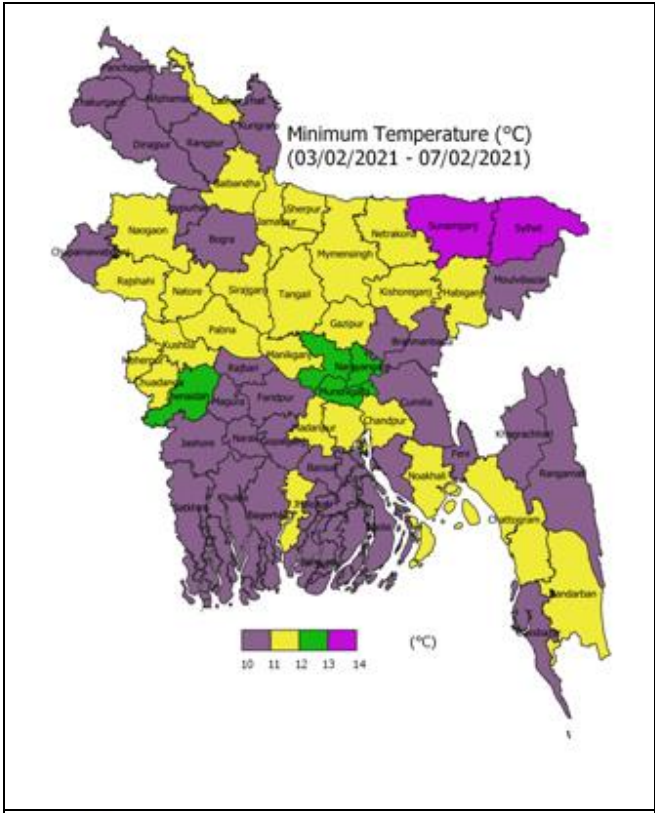
### Weather Forecast and Advisory for the Period of 01.02.2021 to 07.02.2021

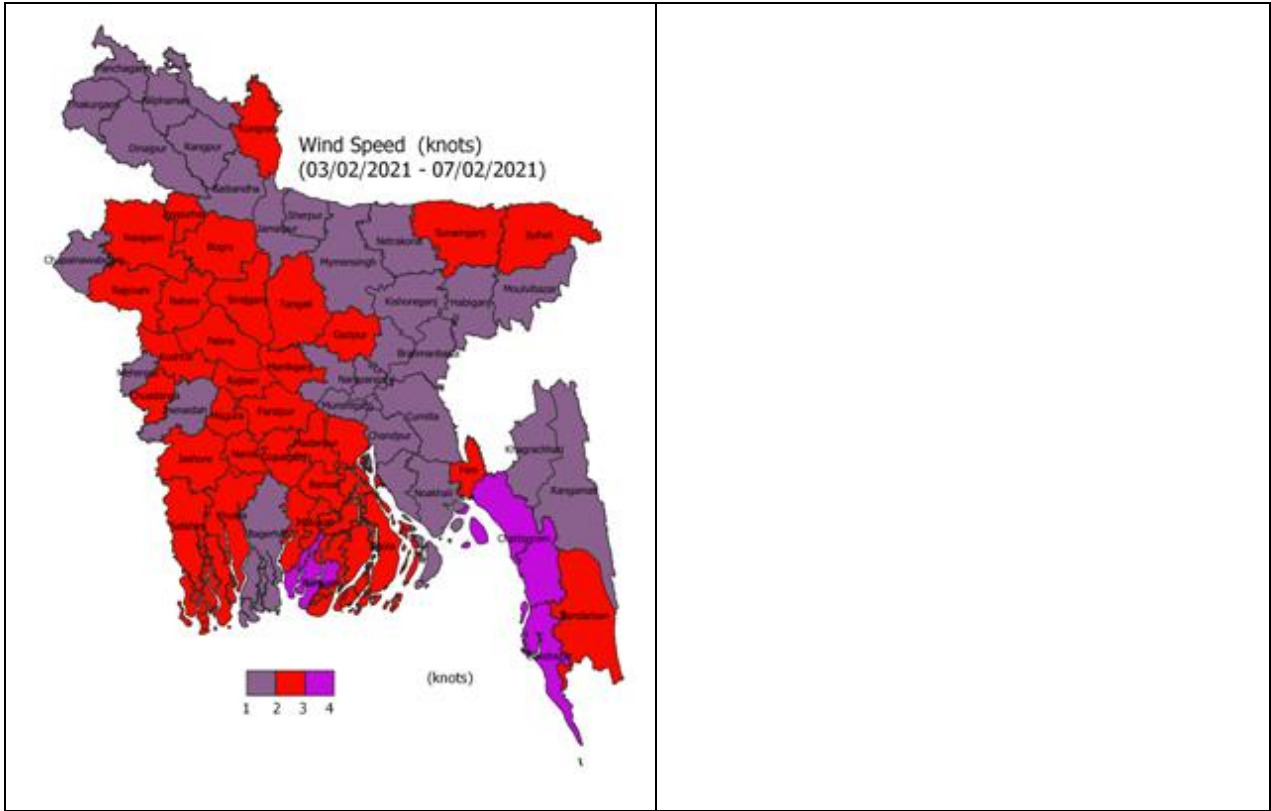
Bright sunshine hour is likely to be from 6.00 to 7.00 hours per day during this week. Average free water loss is likely to be from 2.50 to 3.50 mm per day during this week.

- Weather will remain dry over the country during this period.
- Light to moderate fog may occur over the country and with chances of moderate to thick fog may occur at places over the northern part and river basin area from mid night till morning during this period.
- Day and night temperature may rise gradually over the country during this period.

### **District Wise Quantitative Weather Forecast for next Five days from 03 Feb.-07 February 2021**

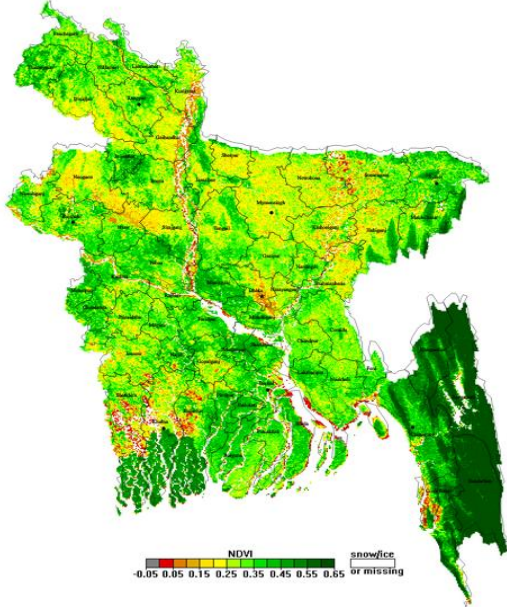




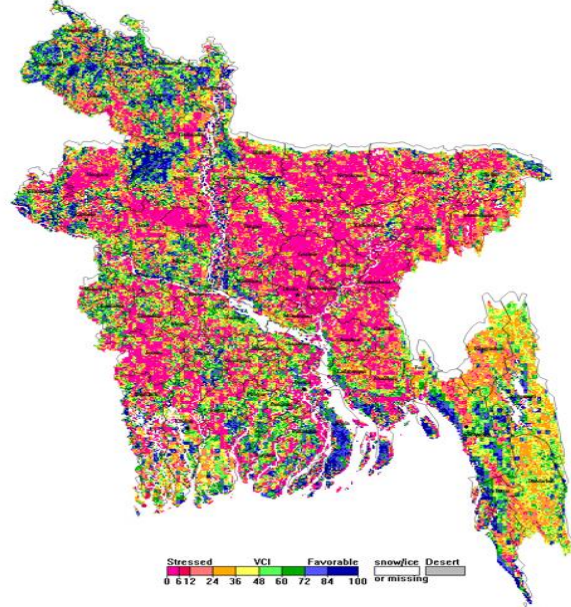


## Different Satellite Products over Bangladesh

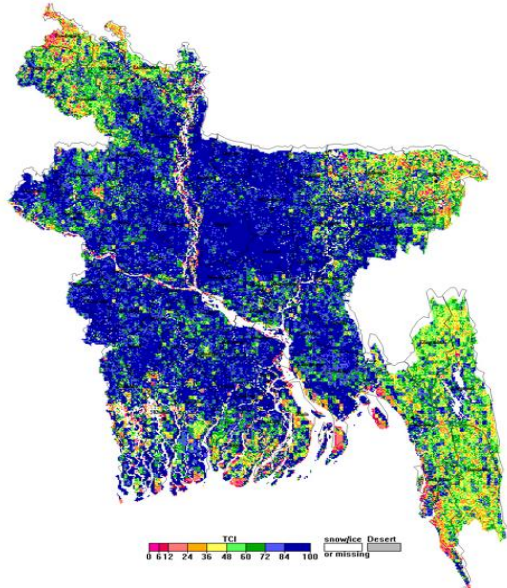
NOAA/VIIRS BLENDED NDVI composite for the week. No. 03 (15 January-21 January) over Agricultural regions of Bangladesh



NOAA/ AVHRR BLENDED VCI composite for the week No. 03 (15 January-21 January) over Agricultural regions of Bangladesh



NOAA/ AVHRR BLENDED TCI composite for the week 03 (15 January-21 January) over Agricultural regions of Bangladesh



NOAA/ AVHRR BLENDED VHI composite for the week 03 (15 January-21 January) over Agricultural regions of Bangladesh

