



# NATIONAL AGROMETEOROLOGICAL ADVISORY SERVICE BULLETIN

14 April 2021 (WEDNESDAY)  
[FOR THE PERIOD 14.04.2021 – 18.04.2021]



## DISCLAIMER

Under the Agro-meteorological Information System Development Project, Agromet Advisory Service Bulletins at National & Sixty Four (64) districts have been prepared on experimental basis. These bulletins are being displayed through the website of Department of Agricultural Extension for valuable comments/ suggestions from all concerned.

Please Contact: Farhana Hoque, Sabuj Roy | E-mail: [adamisdg@dae.gov.bd](mailto:adamisdg@dae.gov.bd)  
Phone No.: 02-55`028414, 02-55028418

## ISSUED BY

Agro-Meteorological Information Systems  
Development Project  
Department of Agricultural Extension (DAE)  
Ministry of Agriculture  
In collaboration with Bangladesh  
Meteorological Department

## **Special Agromet Advisories for CORONA virus (COVID-19) transmission in Bangladesh**

### **Agromet Advisories**

Farmers and all other farm managements are advised to follow the guidelines of Government of Bangladesh to avoid infection and social transmission of CORONA virus (COVID-19). Precautions and safety measures should be taken up to prevent the Carona virus spread. Simple measures include social distancing, maintaining personal hygiene by washing hands with soap, wearing of face mask, drink hot water, stay at home and cleaning of implements and machinery. Farmers should not work in a group; consult with a doctor in case of any symptom. Please stay at home does not visit the field until it is very necessary.

### **Salient Weather Conditions & Forecast**

As per the weather forecast of Bangladesh Meteorological Department (BMD) during next 24 hours' rain/thunder showers accompanied by temporary gusty/squally wind is likely to occur at one or two places over Sylhet & Mymensingh divisions. Weather may remain mainly dry with temporary partly cloudy sky elsewhere over the country. Mild to moderate heat wave is sweeping over Rajshahi & Khulna divisions and the regions of Dhaka, Tangail, Faridpur, Rangamati, Dinajpur, Nilphamari, Panchagarh & Patuakhali and it may continue. Day and night temperature may remain nearly unchanged over the country. As per the outlook issued by BMD for next 72 hours' rain/thunder showers activity is likely. During last four days, light to moderate rainfall occurred few parts of the country and as per the quantitative medium range weather forecast; most of the districts of the country are not likely to receive rainfall in the next five days. Detail Agromet advisory are given below:

### **Boro paddy**

#### **Panicle Initiation to Hard Dough stages**

- Provide irrigation and maintain the water level in the land as per requirement.
- In case of bacterial leaf blight, stop application of urea fertilizer. In the initial stage of the disease, apply 60 gm MOP, 60 gm thiovit in 10 liters of water and apply on 5% of the land. In case of disease before panicle initiation, 5 kg of potash fertilizer should be applied at top dressing per bigha.
- Irrigation management should be followed by periodic wetting and drying (AWD) method to control bacterial leaf blight.
- In case of blast disease, in the initial stage of the disease, apply five kg of potash fertilizer per bigha as top dressing.
- To control blast disease, in the early stages of the disease, apply the fungicide Trooper / Nativo / Jill mixed in 107 ml per 100 liters of water.

- There is chance of stem borer in rice in the main field. If noticed, the pest may be identified and controlled by using light traps, if the infestation is high, use approved pesticides.
- Use light traps to control leaf-roller insects and perching on the ground. Avoid excessive use of urea fertilizer. If 25% of the leaves are damaged, apply one of the approved pesticides of Sevin 85 SP, Darsbun 20 EC or Mipcin 75 WP in the correct dosage.
- In case of thrips infestation, apply nitrogen fertilizer on the affected land. In case of high infestation apply 1.12 liters of malathion or 1.6 kg carbaryl or 1.12 kg isoprocarb / MIPC per hectare.

### Vegetables

- Apply light irrigation, if needed.
- In case of infestation of *eggplant* tip and fruit borer insects, cut and destroy the affected tip along with the insects. Insect reproduction is likely to be greatly reduced by using pheromone traps. Use spray of approval dose of insecticides, if necessary or recommended local organic insecticides may be used.
- In case of fly infestation in pumpkin vegetables, use pheromone and poison traps together. Pesticides of alpha ciphermethrin group can be used.
- In case of powdery mildew in pumpkin vegetables, apply hexaconazole or mencozeb.
- In case of Aphid attack in vegetables, use the approved dose of Malathion group pesticide.
- In case of mite infestation in chilli, 1 kg half-broken neem seeds in 20 liters of water for 24 hours and spray the water (after chopping) on the underside of the leaves. If the infestation is severe, spray the spider mite 57 EC at the rate of 2.0 ml per liter of water or Vertimek 1.8 EC at the rate of 12 ml per 10 liters of water.

### Horticultural crops

- Farmers are advised to go for inter cultural operations in fruit orchard.
- In case of symptoms of Sigatoka disease on banana leaves, 0.5 ml of Score or 2 g of **Noin or Bavistin** or **0.1 ml of Econazole / Folico** should be mixed in every liter of water and sprayed 2-3 times at intervals of 15-20 days.
- In case of banana beetle infestation, apply **Isoprocarb / MIPC** group pesticides.
- If millibugs attack guava, apply approved pesticides. This insect can also be controlled by spraying powdered soap at the rate of 05 g per liter of water.
- Take necessary action in case of infestation of fruit flies in guava.
- Apply light irrigation as per requirement.

### Livestock

- Cattle should be fed with hay, raw grass and hand-made granular feed.
- Vaccinate the cattle to prevent disease.

- Keep the cattle house dry and clean. Use mosquito nets or earthenware pots coils at room.

### **Poultry**

- Vaccinate the chickens regularly to prevent disease.
- Keep the poultry house dry and clean. Use mosquito nets or earthenware pots coils at room.

### **Fishery**

- If there are deciduous trees on the banks of the pond, clean the leaves regularly.
- If the pond water is contaminated, change the water

## Realized Weather at different locations in the country

Rainfall for last 24 hours (till 09 AM on 14 April 2021) and maximum temperature on 13 April and minimum temperature on 14 April 2021 is given below:

Name of Divisions	Name of Stations	Rain fall (mm)	Max. Temp (°C)	Min. Temp (°C)	Name of Divisions	Name of Stations	Rain fall (mm)	Max. Temp (°C)	Min. Temp (°C)
Dhaka	Dhaka	00	36.9	26.0	Rajshahi	Rajshahi	00	<u>39.6</u>	23.6
	Tangail	<u>01</u>	37.0	23.5		Ishurdi	00	38.5	24.8
	Faridpur	00	36.7	24.5		Bogura	00	36.0	25.0
	Madaripur	00	35.5	24.3		Badalgachhi	00	36.0	23.5
	Gopalganj	00	35.7	25.2		Tarash	00	35.0	23.5
	Nikli	00	35.2	24.0					
Mymensingh	Mymensingh	00	35.2	24.4	Rangpur	Rangpur	00	35.0	24.0
	Netrokona	00	34.5	23.4		Dinajpur	00	36.1	23.5
						Sayedpur	00	36.5	23.5
Chattogram	Chattogram	00	33.0	25.6		Tetulia	00	36.7	<u>21.0</u>
	Sandwip	00	33.6	24.5		Dimla	00	36.1	23.2
	Sitakunda	00	34.7	24.0		Rajarhat	00	35.5	21.5
	Rangamati	00	36.2	24.6	Khulna	Khulna	00	37.2	25.3
	Cumilla	00	34.0	25.0		Mongla	00	36.2	25.5
	Chandpur	00	35.4	25.5		Satkhira	00	35.5	26.0
	M.Court	00	35.6	25.6		Jashore	00	36.8	24.8
	Feni	00	35.7	25.0		Chuadanga	00	38.3	23.5
	Hatiya	00	33.6	24.3		Kumarkhali	00	37.5	24.6
	Cox's Bazar	00	33.0	24.6	Barishal	Barishal	00	35.3	25.0
Kutubdia	00	32.0	25.0	Patuakhali		00	36.3	24.5	
Teknaf	00	33.1	24.3	Khepupara		00	35.6	25.6	
				Bhola		00	35.4	25.8	
Sylhet	Sylhet	<u>01</u>	35.3	23.3					
	Srimangal	00	35.9	22.0					

### Highlights:

- Country average bright sunshine hour was 7.00 hours per day during last week.
- Country average free water loss during the previous week was 5.00 mm per day.

### Weather Forecast Valid for 24 Hours commencing 06 PM Today:

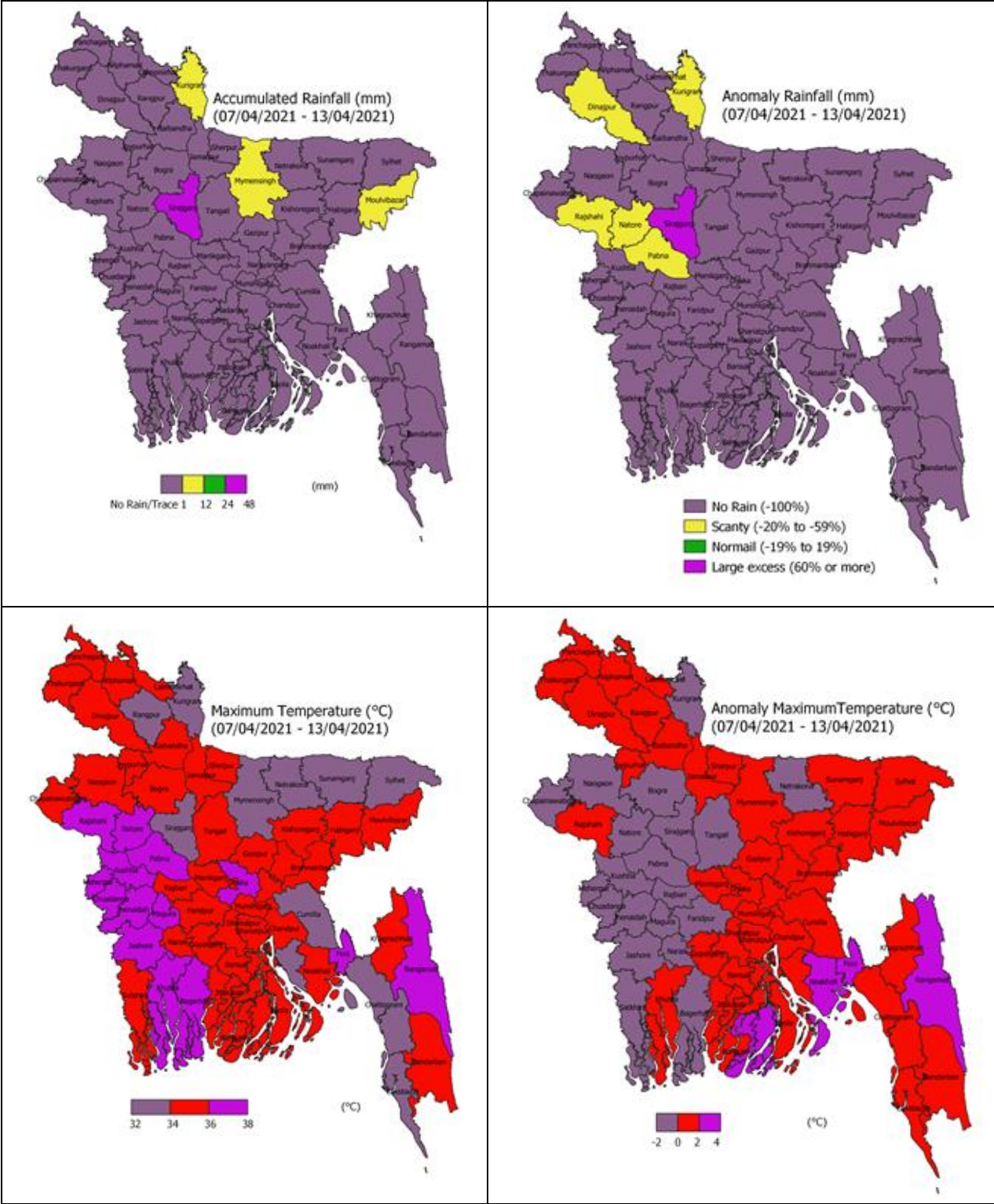
**Forecast:** Rain/thunder showers accompanied by temporary gusty/squally wind is likely to occur at one or two places over Sylhet & Mymensingh divisions. Weather may remain mainly dry with temporary partly cloudy sky elsewhere over the country.

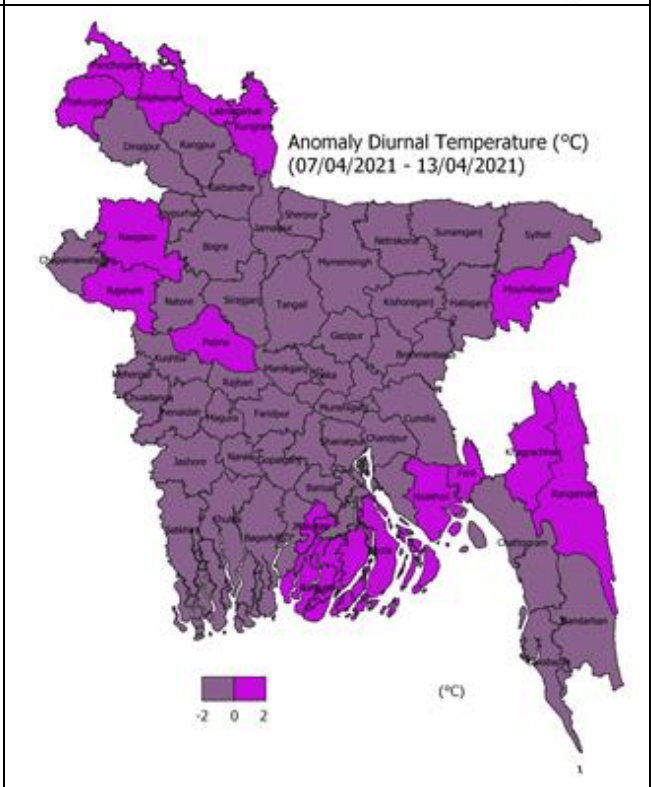
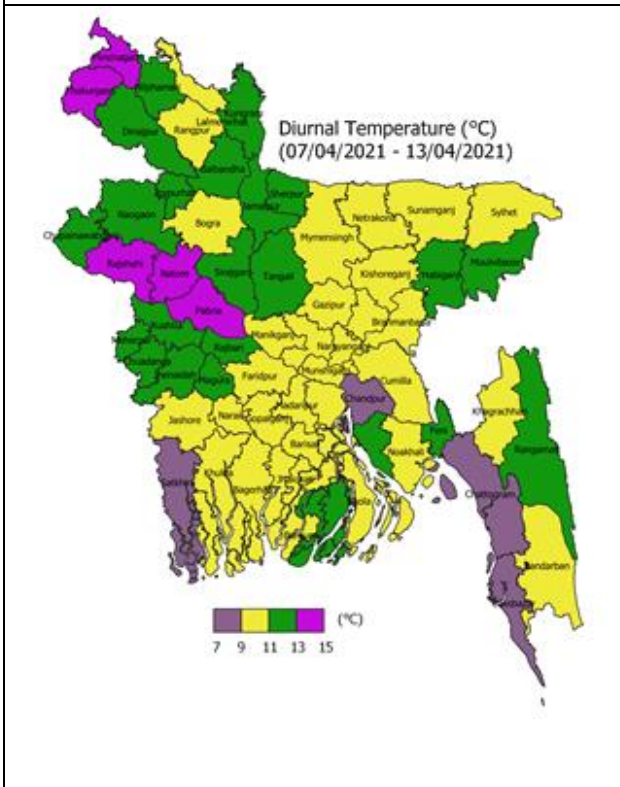
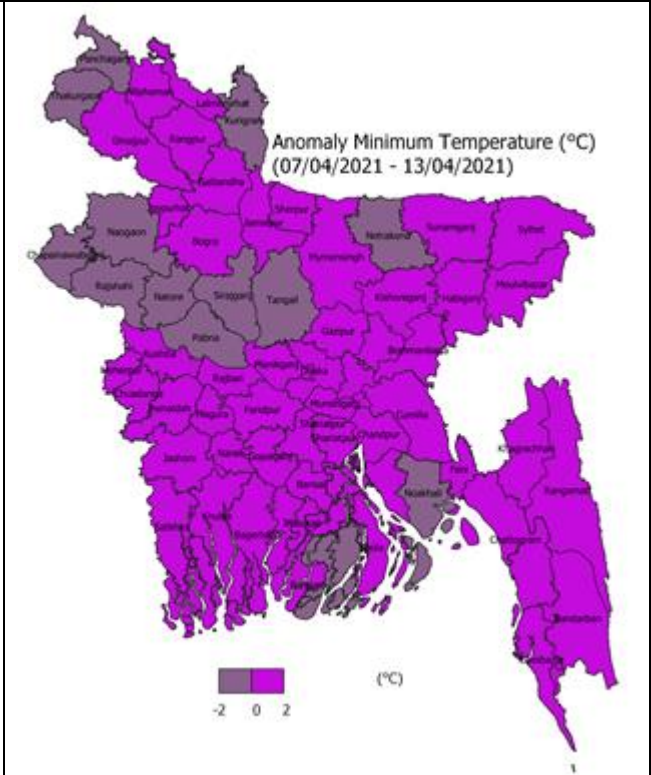
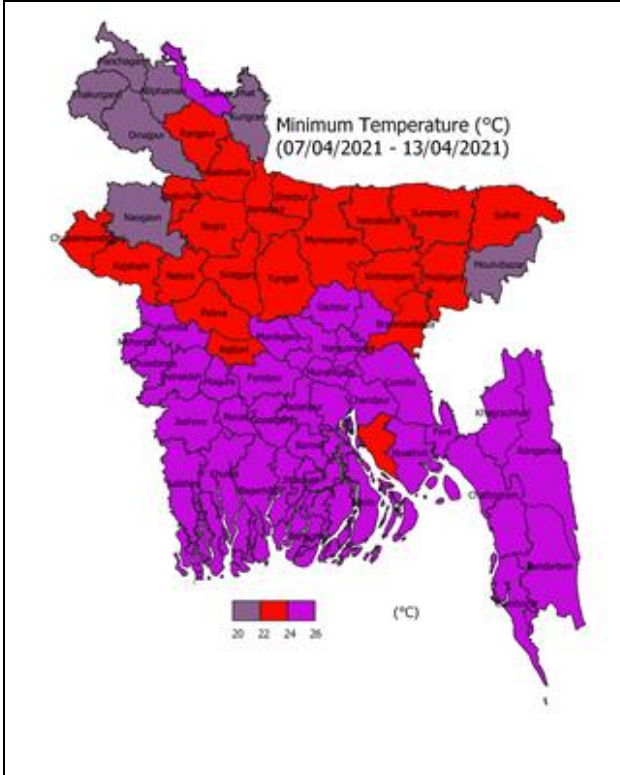
**Heat Wave** Mild to moderate heat wave is sweeping over Rajshahi & Khulna divisions and the regions of Dhaka, Tangail, Faridpur, Rangamati, Dinajpur, Nilphamari, Panchagarh & Patuakhali and it may continue.

**Temperature:** Day and night temperature may remain nearly unchanged over the country.

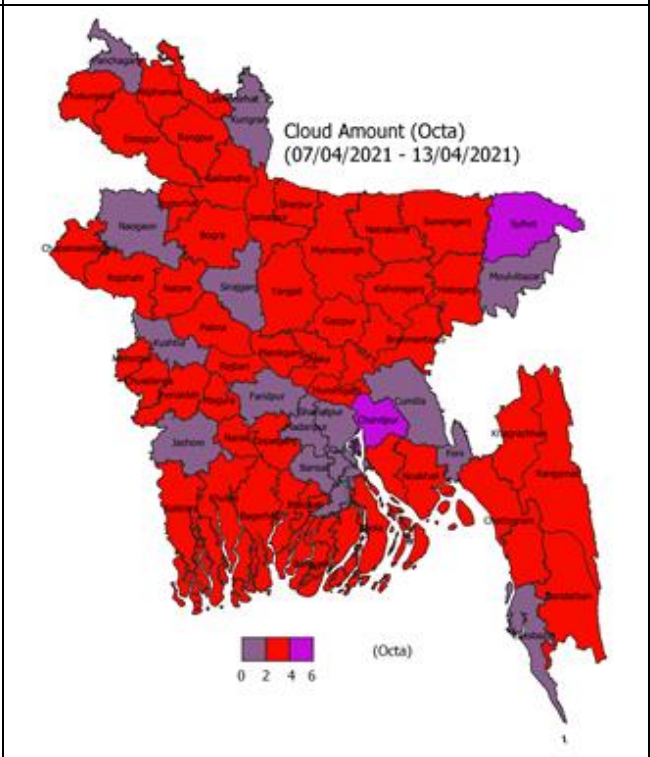
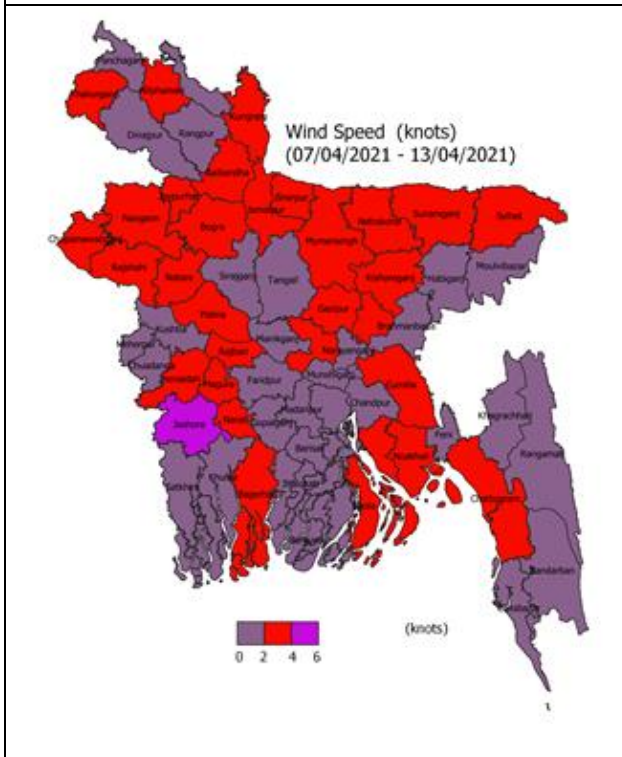
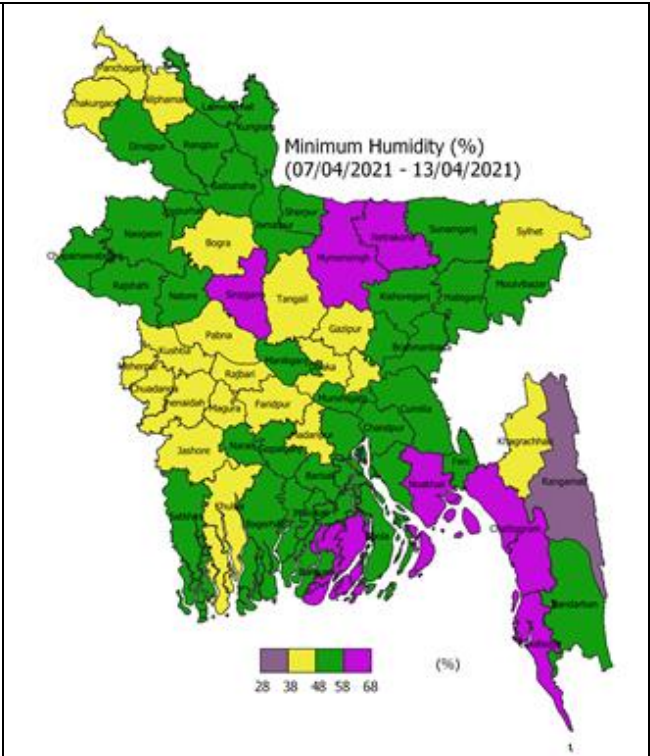
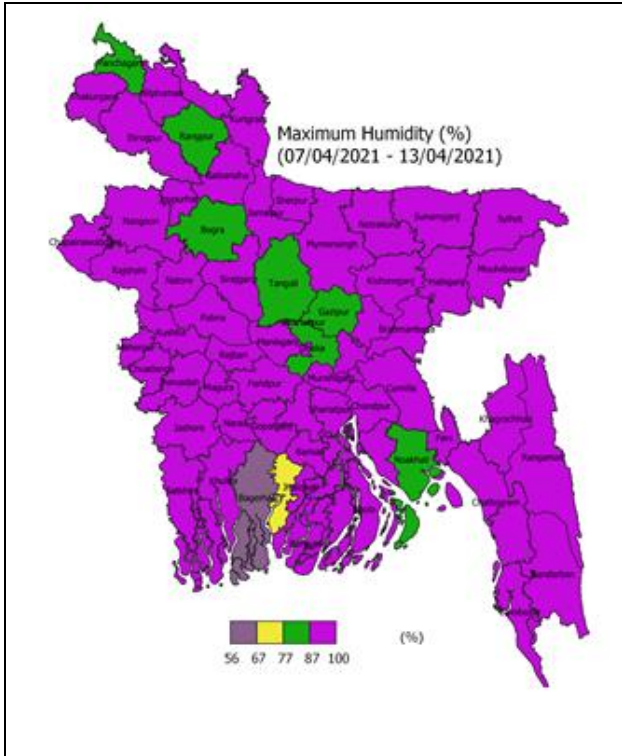


Spatial Distribution of weather parameters for the Week ending 13 April 2021









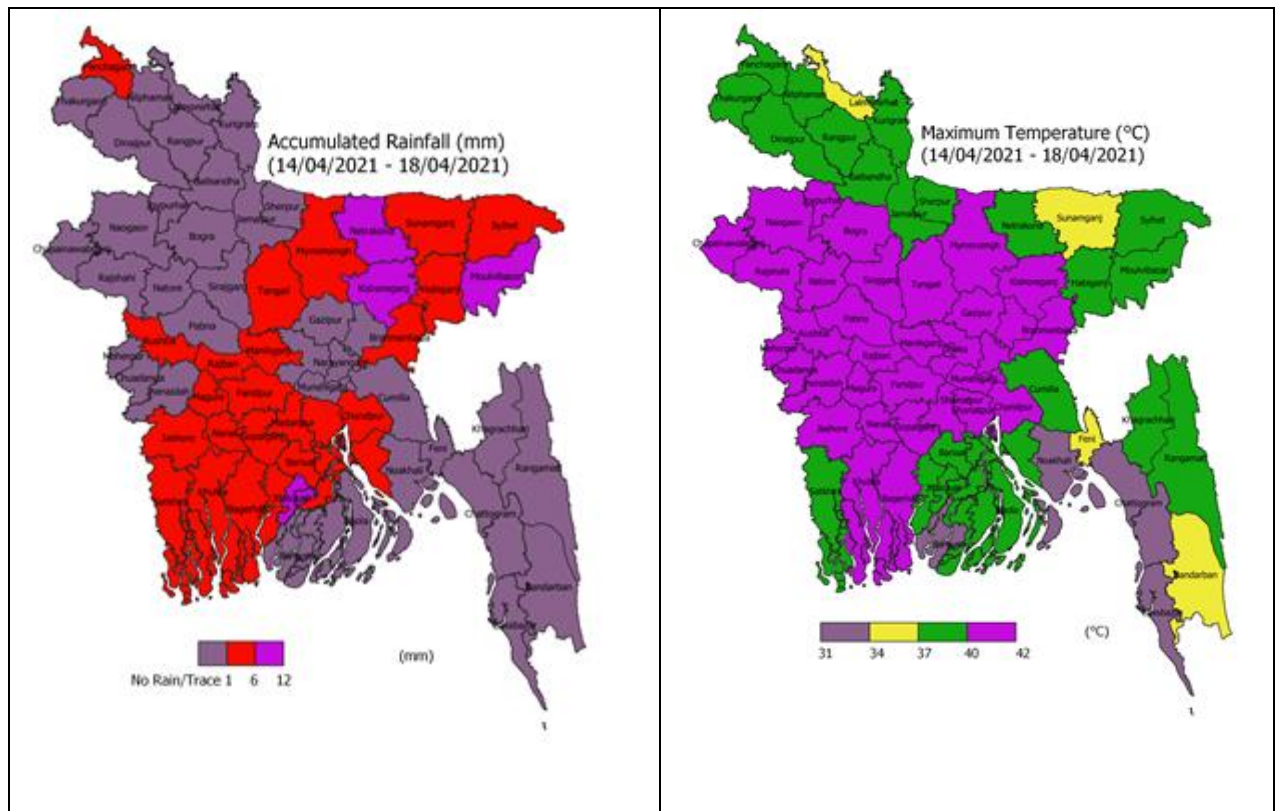


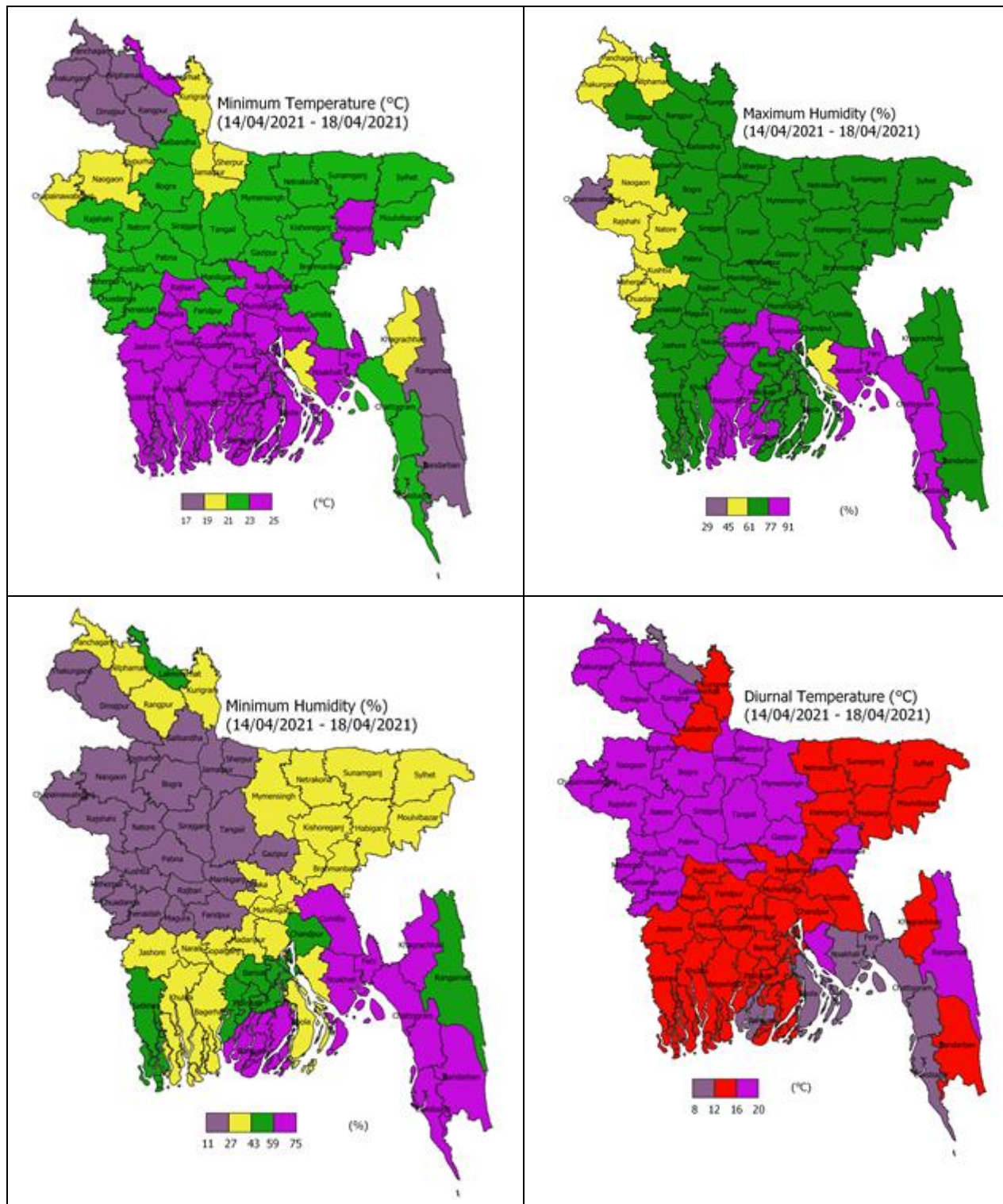
**Weather Forecast and Advisory for the Period of 13.04.2021 to 21.04.2021**

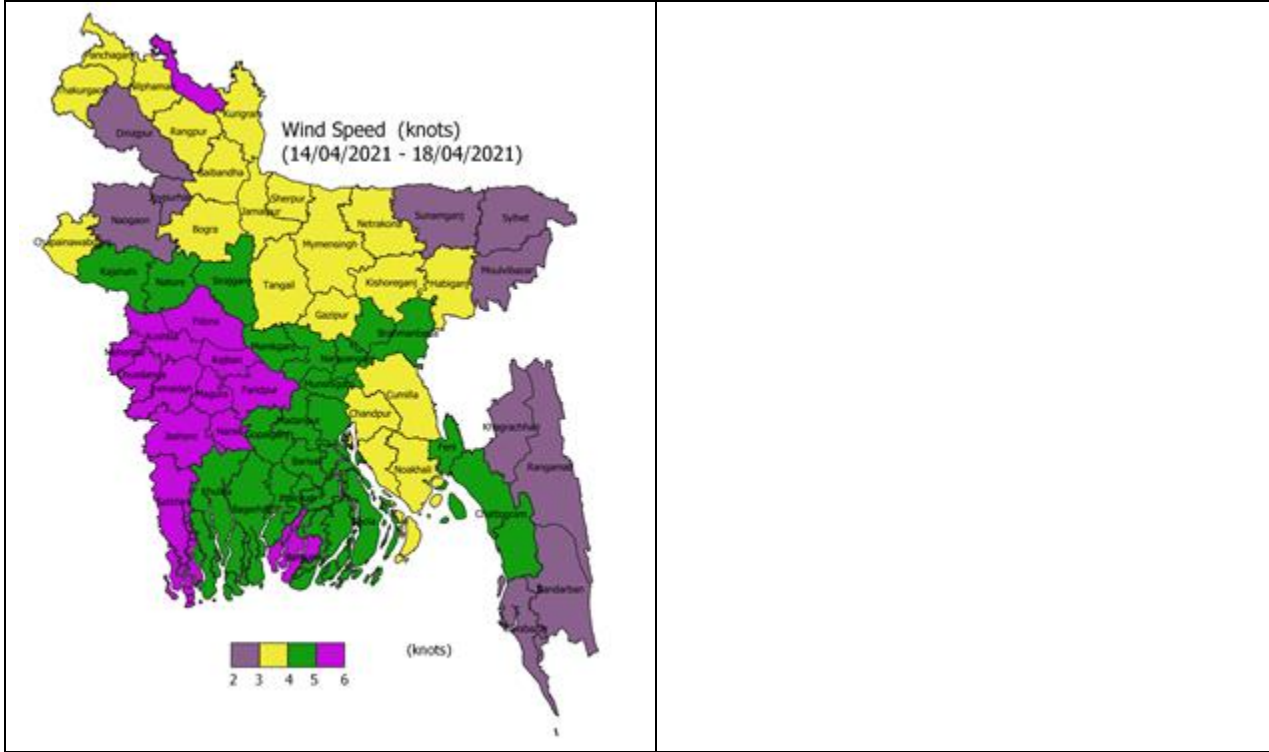
Bright sunshine hour is likely to be from 6.50 to 7.50 hours per day during this week. Average free water loss is likely to be from 3.75 to 4.75 mm per day during this week.

- Rain/thunder showers accompanied by temporary gusty/squally wind is likely to occur at one or two places over Sylhet, Mymensingh, Rangpur & Dhaka divisions and the region of cumilla with isolated hail at places and weather may remain mainly dry with temporary partly cloudy sky elsewhere over the country during the period.
- Day and night temperature may rise slightly over the country during the period

**District Wise Quantitative Weather Forecast for next Five days from 14 April-18 April 2021**



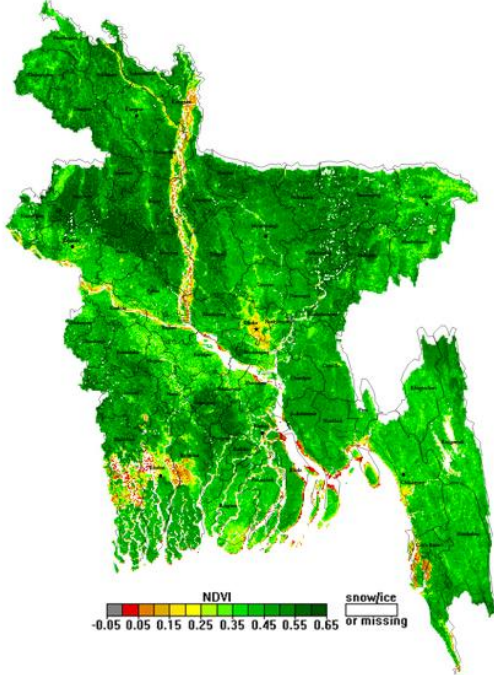




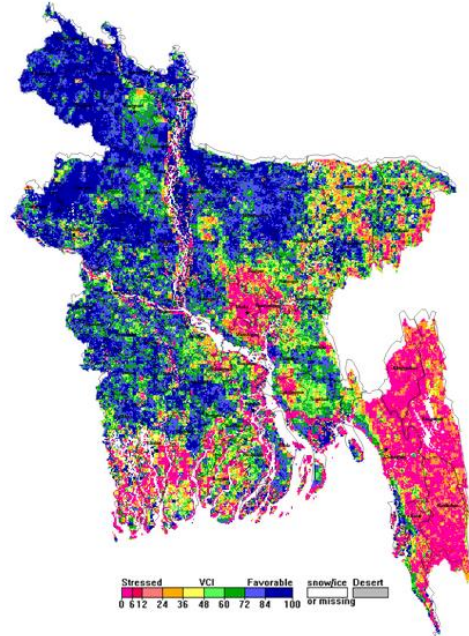


## Different Satellite Products over Bangladesh

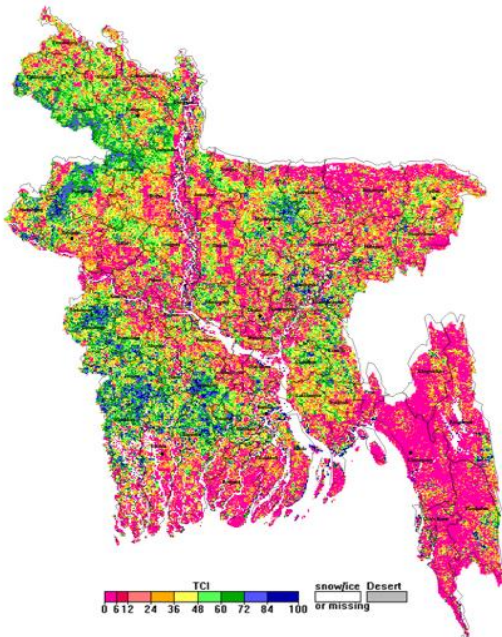
NOAA/VIIRS BLENDED NDVI composite for the week. No. 13 (26 March-01 April) over Agricultural regions of Bangladesh



NOAA/ AVHRR BLENDED VCI composite for the week No. 13 (26 March-01 April) over Agricultural regions of Bangladesh



NOAA/ AVHRR BLENDED TCI composite for the week No. 13 (26 March-01 April) over Agricultural regions of Bangladesh



NOAA/ AVHRR BLENDED VHI composite for the week No. 13 (26 March-01 April) over Agricultural regions of Bangladesh

