



# NATIONAL AGROMETEOROLOGICAL ADVISORY SERVICE BULLETIN

**22 June 2022 (WEDNESDAY)**  
**[FOR THE PERIOD 22.06.2022 – 26.06.2022]**



#### DISCLAIMER

Under the Agro-meteorological Information System Development Project, Agromet Advisory Service Bulletins at National & Sixty Four (64) districts have been prepared on experimental basis. These bulletins are being displayed through the website of Department of Agricultural Extension for valuable comments/ suggestions from all concerned.

#### ISSUED BY

Agro-Meteorological Information Systems  
Development Project  
Department of Agricultural Extension (DAE)  
Ministry of Agriculture  
In collaboration with Bangladesh  
Meteorological Department

## **Special Agromet Advisories for CORONA virus (COVID-19) transmission in Bangladesh**

### **Agromet Advisories**

Farmers and all other farm managements are advised to follow the guidelines of Government of Bangladesh to avoid infection and social transmission of CORONA virus (COVID-19). Precautions and safety measures should be taken up to prevent the Carona virus spread. Simple measures include social distancing, maintaining personal hygiene by washing hands with soap, wearing of face mask, drink hot water, stay at home and cleaning of implements and machinery. Farmers should not work in a group; consult with a doctor in case of any symptom. Please stay at home does not visit the field until it is very necessary.

### **Salient Weather Conditions & Forecast**

As per the weather forecast of Bangladesh Meteorological Department (BMD) during next 24 hours' light to moderate rain/thunder showers accompanied by temporary gusty wind and intense lightning flashes is likely to occur at many places over Rangpur, Mymensingh, Khulna, Barishal, Chattogram & Sylhet divisions and at a few places over Rajshahi & Dhaka divisions with moderately heavy to heavy falls at places over Rangpur, Khulna, Barishal & Chattogram divisions. Day and night temperature may remain nearly unchanged over the country. As per the outlook issued by BMD for next 72 hours rainfall activity is likely to continue. During last four days, light to very heavy rainfall occurred most of the districts over the country and as per the quantitative medium range weather forecast; there is a possibility of rainfall most of the districts in the country during next five days. Detail Agromet advisory are given below.

### **Agromet advisories for flood prone districts:**

1. Drain out excess water from the fields after floods
2. In heavily flood affected areas, select high lands for raising of community nursery with short duration HYV rice varieties. After receding of flood water, farmers may undertake transplanting of the same.
3. If there is total damage of seedlings or rice crop in the main field, undertake late and staggered planting with the old seedlings of the varieties if the field is heavily damaged.
4. In partially affected fields, drain out excess water from rice field and apply 1/3rd N<sub>2</sub> + 50% K as top dressing if the crop is at tillering stage.
5. Undertake direct seeding of rice with the photoinsensitive short duration variety if crop is damaged due to flood.
6. If the seeds are washed away by floods, make alternate arrangement of seeds.
7. Apply excess N fertilizer to the flood affected crops after receding of flood water.
8. Don't allow waterlogging for long, as it leads to rotting and development of diseases.
9. Keep cattle / animals in elevated place and in the shed and ensure their safety.
10. Provide clean drinking water to animals.
11. Transfer the fish from the flooded pond to a safe pond
12. Surround the four banks of the pond or water body with a net.

## **Agromet advisories for other districts:**

### **Aus Paddy**

- Maintain in 3-4 inches water level at recovery to tillering stages.
- Inspect & monitor disease-pest e.g blast, rice bug, stem borers and others and take appropriate plant protection measures
- After decrease in water level from aus paddy field, apply potash fertilizer as top dress by filling gap after 5-7 days and also urea fertilizer after 3-5 days. Urea fertilizer should not be applied if the paddy is in early tillering stage. After 5-7 days, if necessary, urea fertilizer should be applied by breaking the tillers and filling the gap. At this time, it is better to use additional 5 kg of potash fertilizer per bigha in all types of aus paddy fields.
- If the population of Thrips and Green Leaf Hopper exceeds 25%, apply Malathion group insecticide at the rate of 1ml/1 litre of water.
- All the plant protection measures should be taken up after the current spell of rainfall.

### **Aman Paddy**

- Advise for preparation of seeded for Aman paddy in *kharif season*.
- Start sowing of dry seeded long duration paddy after proper tillage operation like ploughing, weeding etc.
- Before sowing seed should be treated by Diethane M-45 properly
- Farmers are advised to practice Dapog method for raising nursery bed.
- Community based rice nursery may be raised to avoid loss of nursery due to heavy rainfall & flooding.

### **(Kharif 1)**

- Postpone harvesting of matured cobs of maize. At the time of grain filling and maturity stage birds damage the maize cobs. Hence, set up a scarecrow dressed in light flowing clothes that may help in avoiding birds attack in maize crop. Also attach strips of aluminum foil to the scarecrow to increase the reflection of sunlight so as to restrict the bird infestation
- To control Fall of Army worm in maize, manual destruction of egg masses and caterpillars may be done. Pheromone traps @ 4/ha for monitoring and 10/ ha for mass trapping of adult insects may be done. Spray Emamectin Benzoate 5% SG @6/15 litre water if infestation is above ETL.
- All the plant protection measure should be taken after the current spell of rainfall.

### **Groundnut**

- Drain out excess water, if any from the land.
- Harvest the matured crop on non-rainy days.

- Monitor the incidences of pests (hairy caterpillar, jassid, thrips, leaf miner, spodoptera & termite) & diseases (leaf spot/tikka disease, leaf rust, foot rot/stem rot, collar rot, bud necrosis) and if noticed, take appropriate preventive measure.
- Prevailing weather condition are favorable for tikka leafspot in groundnut. To control spray with hexaconazol @2ml. or carbendazim @1 g. per litre of water.
- All the plant protection measure should be taken after the current spell of rainfall.

### **Vegetables**

- Drain out excess water
- Hand pollination is effective for more production in case of tassel gourd and pointed gourd. Moreover, advised to cut aged leaves and continue others intercultural operations in vegetables land.
- Wash away sticky mud from base and stems of vegetable plants by spraying fresh water; to prevent rotting, spray Copper hydroxide or copper oxychloride@4g per litre of water. Staking of bamboo should be provided to crops like tomato, chilli and brinjal for better support.
- Arrange for adequate drainage to avoid water stagnation in the crop fields. Drain out excess water from the fields. Avoid irrigation, intercultural operation and application of plant protection measures and fertilizers to the standing crops. Harvest the matured crop immediately and store the harvested products at safe places.
- All the plant protection measure should be taken after the current spell of rainfall.

### **Horticulture**

- Weather is congenial for sigatoka leaf spot disease in banana; cut and remove all severely affected leaves and spray Propiconazol 1ml/ litre of water. Weather is congenial for burrowing nematode in banana; apply neem cake (1 kg/plant) at the time of planting to reduce the pest population. Store the harvested banana bunches in dry places to prevent disease incidence due to rainfall.
- Provide mechanical support to banana, young fruit plants and vegetables and carry out propping up in sugarcane to prevent the crops from lodging due to strong winds. Keep harvested produce at safer places. Keep cattle/goats indoor during thunderstorm/dust storm.
- Weather is congenial for bud rot disease in coconut; spray 1% Bordeaux mixture on the spindle leaf and crown of palms. Make provisions for small drains at required interval in the orchards to drain out excess water.

### **Jute:**

- Keep the jute land weed free by weeding and uproot comparatively under growth plant during the time.
- There is a chance of incidences of Semilooper. Spray Imidocholoprid/Chlorocyryn/ Nitro @ 1ml/litre of water. Semilooper and mites may infest in drought and humid weather and so placing 10-12 bamboo sticks/ plant branch @33 decimal land for controlling insects as environment friendly way. Besides, inspect the land regularly.

- Drain out water, if any, immediately from jute field. Application of fertiliser to jute field should be avoided now.
- To protect capsularis jute crop (>4 ft tall) from lodging due high wind speed, the peripheral jute plants (round the field) need to be tied together by taking 4-5 jute plants in a consecutive manner.
- Monitor the pests and diseases incidences and take appropriate plant protection measure.
- After drying the jute land, undertake weeding operation with a hoe. In case of disease incidences, apply recommended fungicides.
- Drain out excess water.
- All the plant protection measure should be taken after the current spell of rainfall.

#### **Betel vine:**

- At Leaf growing stage the fencing and structure of betel vine garden broken due to “strong wind. Repair the structure as early as possible and if required took down the creeper from the structure.
- Wet the plant and the base soil with copper oxychloride solution --Spray 1% Bordeaux mixture at the base.
- Intercultural operations need to continue as others month.
- Hail storm and western storm may be possible at this time, so special care should be given for beetle leaves.
- All the plant protection measure should be taken after the current spell of rainfall.

#### **Sugarcane:**

- During the month, sugarcane plant. in grand growth stage
- Cultivated summer pulse crops, leafy vegetables need to be harvested in the sugarcane field as relay/inters cropping.
- In this time, stem rot and stem borer and others disease-pest may infest the crop and so inspect the land regularly and take appropriate plant protection measure.
- All the plant protection measure should be taken after the current spell of rainfall.

#### **Livestock:**

- Keep the cow house open
- Take appropriate measures to repel mosquitoes.
- Give the cattle plenty of clean water to drink.
- Feed raw grass to cattle.
- Vaccinate cattle regularly to prevent disease.

#### **Poultry:**

- Vaccinate chickens regularly to prevent disease.
- Keep the poultry house clean.

**Fishery:**

- Now is a good time to stock fish /prepare the pond
- Catch all the old fish from the ponds by drying or applying Rotenon (25 g / decimal / ft).  
Apply 1 kg lime per cent after 2/3 days
- Apply fertilizer (urea 200 g/decimal, TSP 100 g/ decimal) 3/4 days after lime application.
- 3/4 days after application of fertilizer, when the water turns green, store the layered fish fry.

## Realized Weather at different locations in the country

**Rainfall for last 24 hours (till 06 AM on 22 June 2022) and maximum temperature on 21 June and minimum temperature on 22 June 2022 is given below:**

Name of Divisions	Name of Stations	Rain fall (mm)	Max. Temp (°C)	Min. Temp (°C)	Name of Divisions	Name of Stations	Rain fall (mm)	Max. Temp (°C)	Min. Temp (°C)
Dhaka	Dhaka	Trace	30.9	27.0	Rajshahi	Rajshahi	02	<u>34.9</u>	26.1
	Tangail	00	32.6	26.0		Ishurdi	03	31.8	26.4
	Faridpur	00	31.0	25.2		Bogura	Trace	32.6	26.2
	Madaripur	07	32.3	25.1		Badalgachhi	31	32.4	25.0
	Gopalganj	Trace	32.4	26.5		Tarash	00	33.0	xx
	Nikli	00	30.0	26.5					
Mymensingh	Mymensingh	09	30.7	26.2	Rangpur	Rangpur	06	32.6	25.8
	Netrokona	Trace	29.0	25.5		Dinajpur	31	30.2	24.5
						Sayedpur	08	32.0	25.6
Chattogram	Chattogram	22	29.7	24.9		Tetulia	03	30.2	24.8
	Sandwip	29	29.7	24.2		Dimla	Trace	30.6	26.0
	Sitakunda	27	30.0	<u>23.0</u>		Rajarhat	33	29.5	25.2
	Rangamati	00	30.5	25.0	Khulna	Khulna	Trace	32.0	27.0
	Cumilla	00	30.8	25.3		Mongla	00	32.2	26.5
	Chandpur	19	33.0	25.0		Satkhira	00	33.5	26.0
	M. Court	12	31.5	25.5		Jashore	00	34.2	26.4
	Feni	00	30.5	24.8		Chuadanga	02	33.2	24.6
	Hatiya	71	31.0	24.7		Kumarkhali	14	31.5	25.4
	Cox's Bazar	101	29.3	24.0	Barishal	Barishal	36	33.0	25.5
	Kutubdia	<u>120</u>	27.6	24.0		Patuakhali	13	33.0	26.0
Teknaf	35	30.0	24.0	Khepupara		13	33.1	25.4	
				Bhola		17	33.0	25.5	
Sylhet	Sylhet	14	31.1	25.0					
	Srimangal	04	30.8	25.0					

### Highlights:

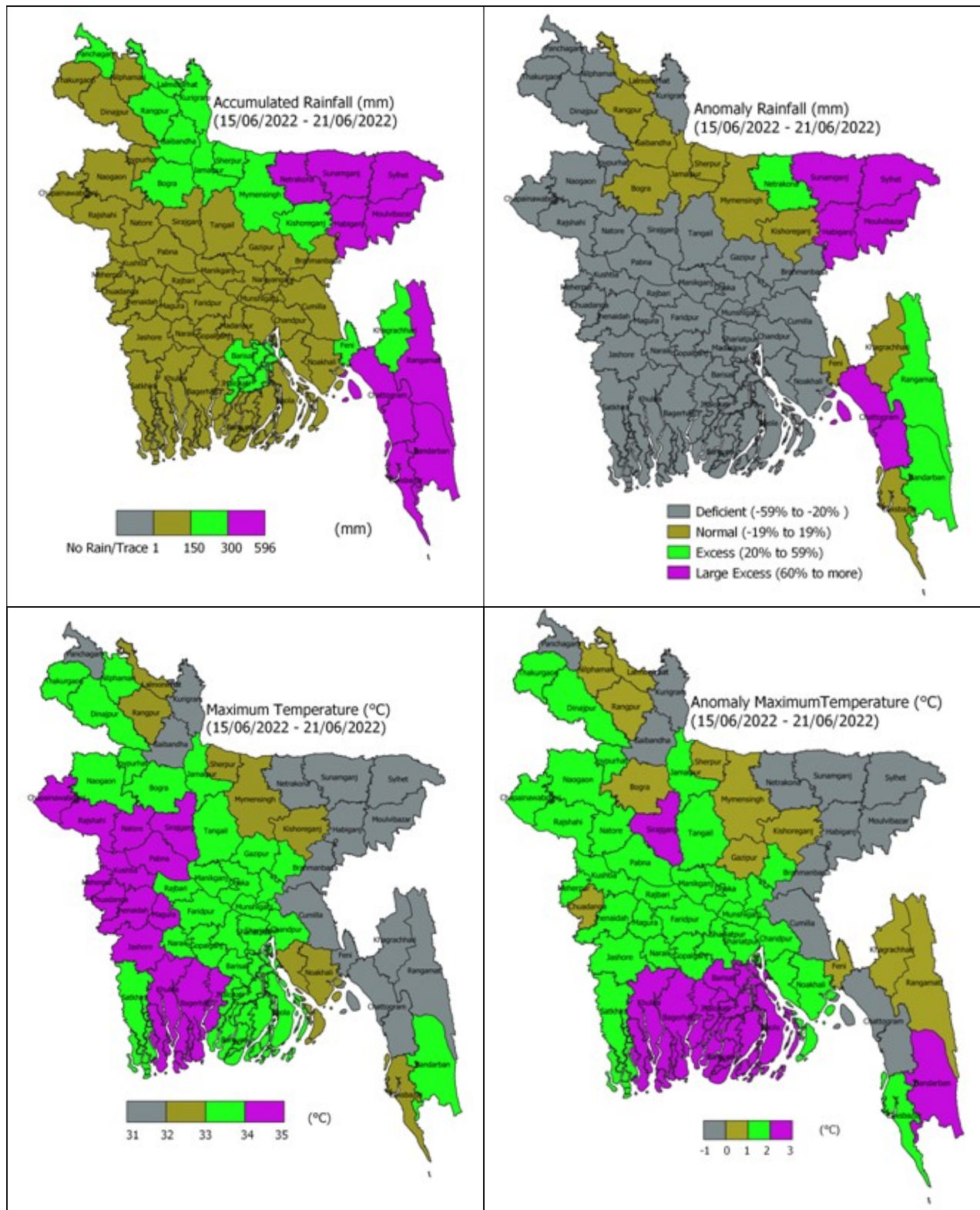
- Country average bright sunshine hour was 2.99 hours per day during last week.
- Country average free water loss during the previous week was 3.33 mm per day.

### Weather Forecast Valid for 24 Hours commencing 06 PM Today:

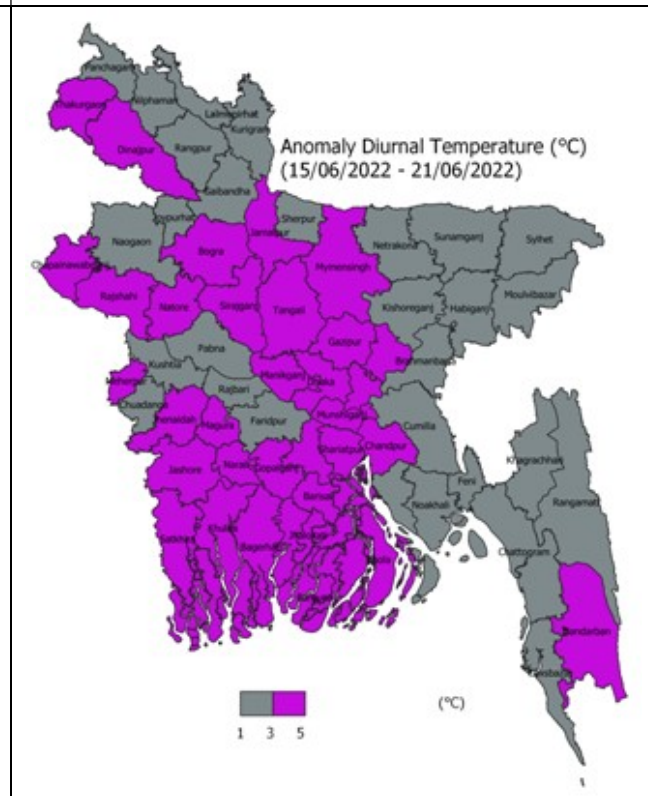
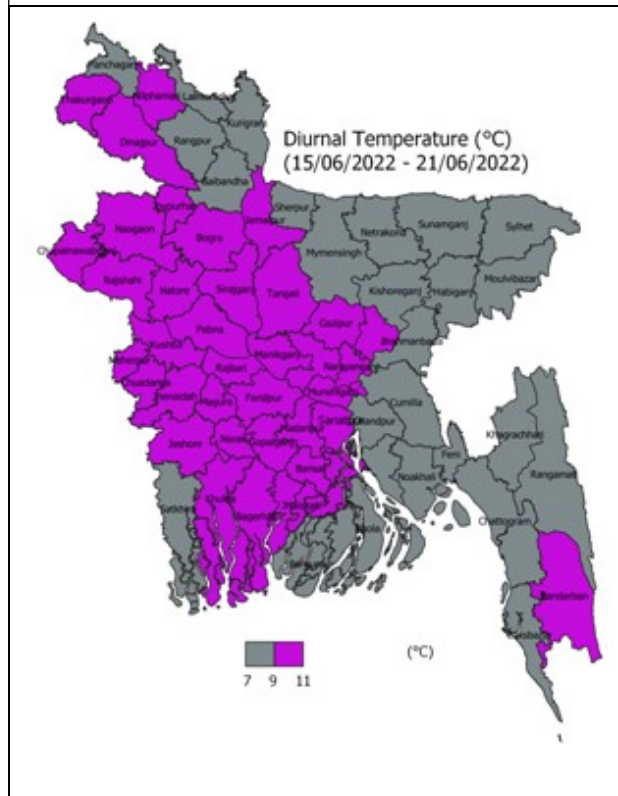
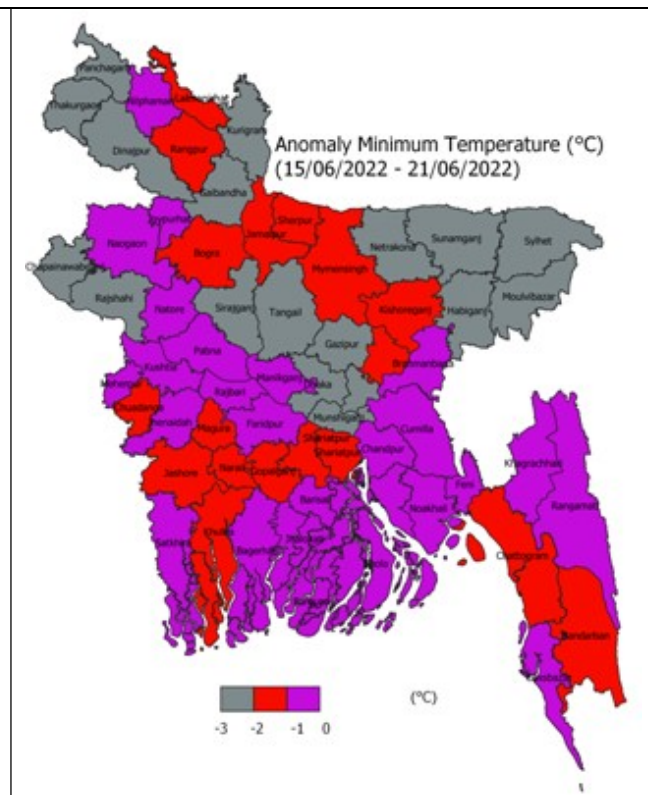
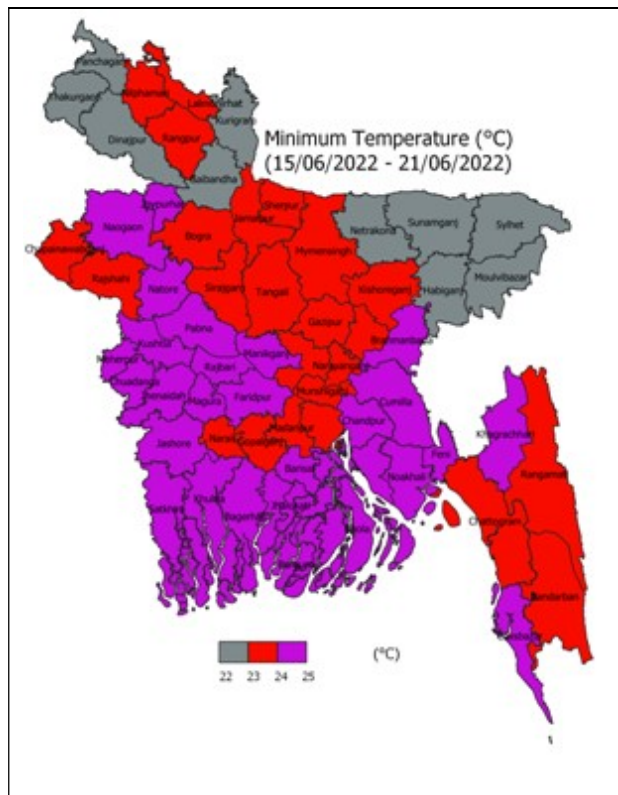
**Forecast:** Light to moderate rain/thunder showers accompanied by temporary gusty wind and intense lightning flashes is likely to occur at many places over Rangpur, Mymensingh, Khulna, Barishal, Chattogram & Sylhet divisions and at a few places over Rajshahi & Dhaka divisions with moderately heavy to heavy falls at places over Rangpur, Khulna, Barishal & Chattogram divisions.

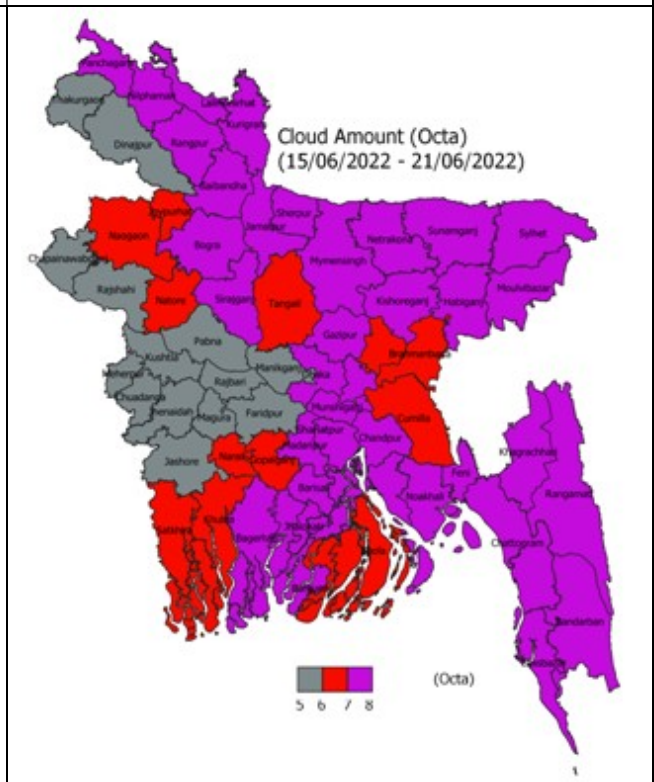
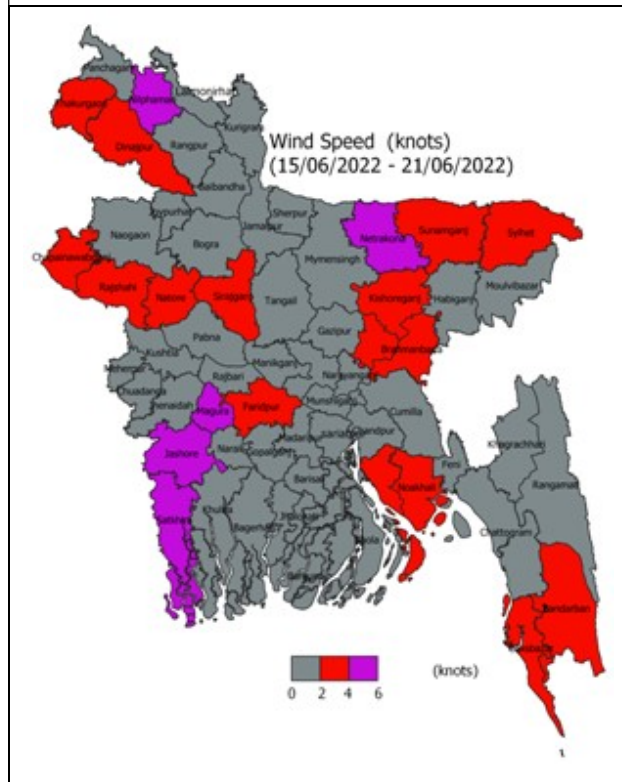
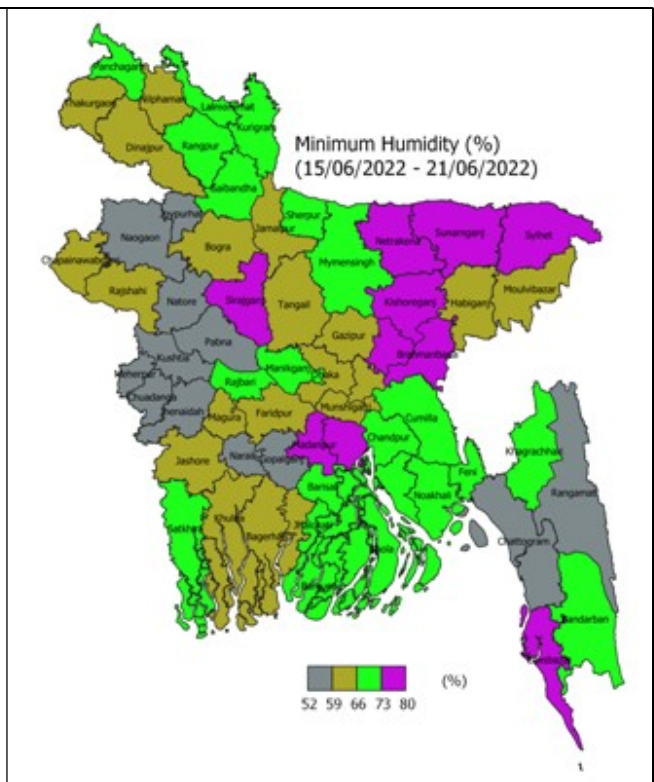
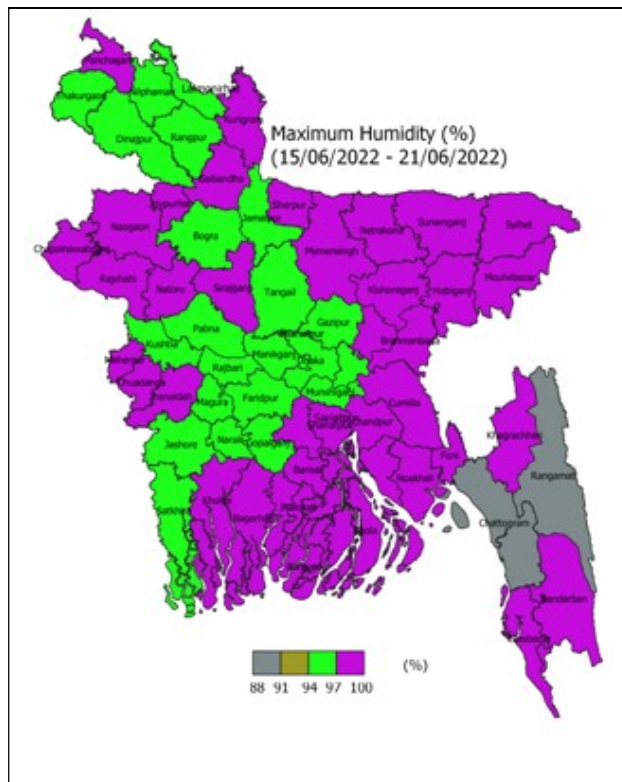
**Temperature:** Day and night temperature may remain nearly unchanged over the country.

## Spatial Distribution of weather parameters for the Week ending 21 June 2022







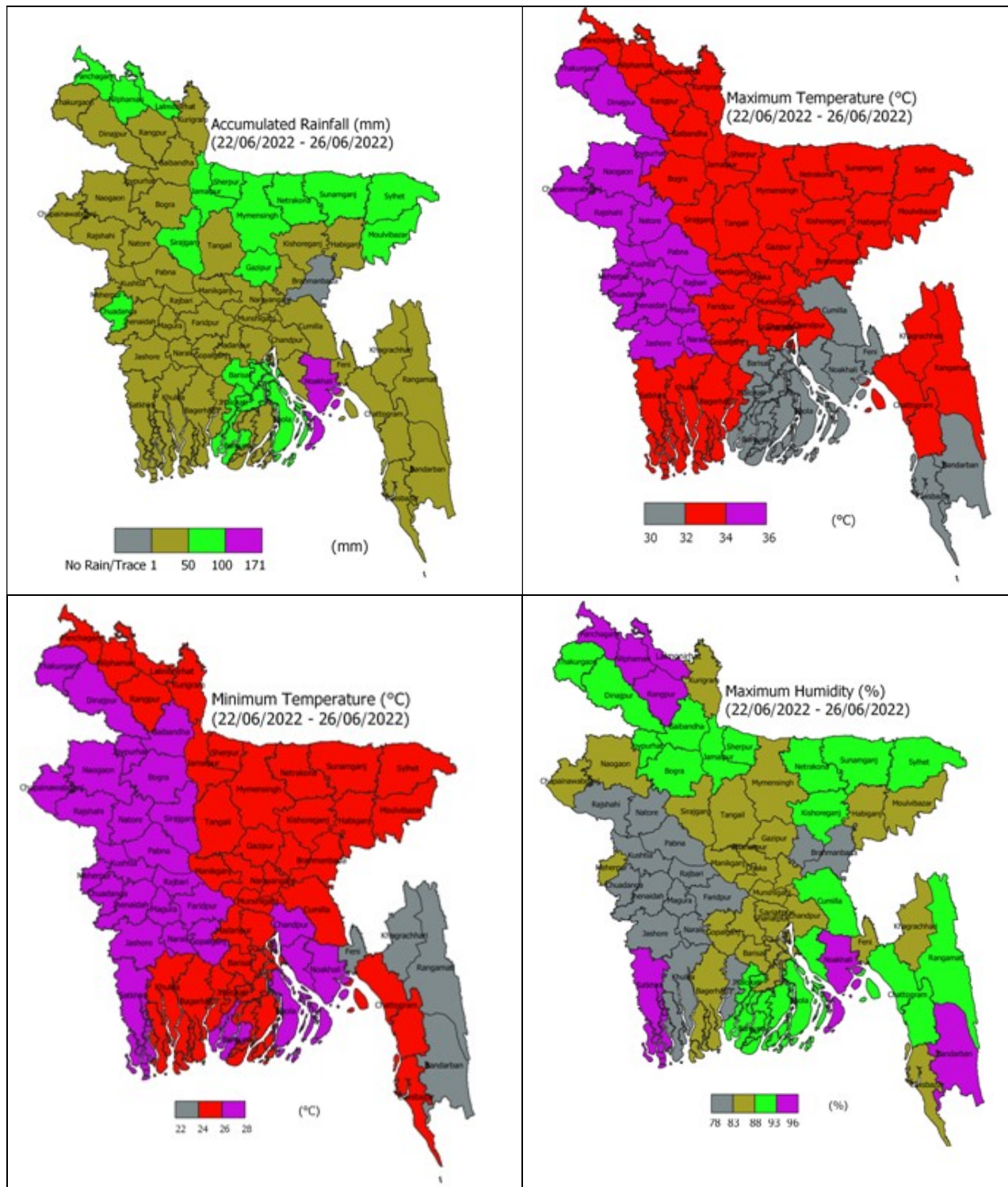


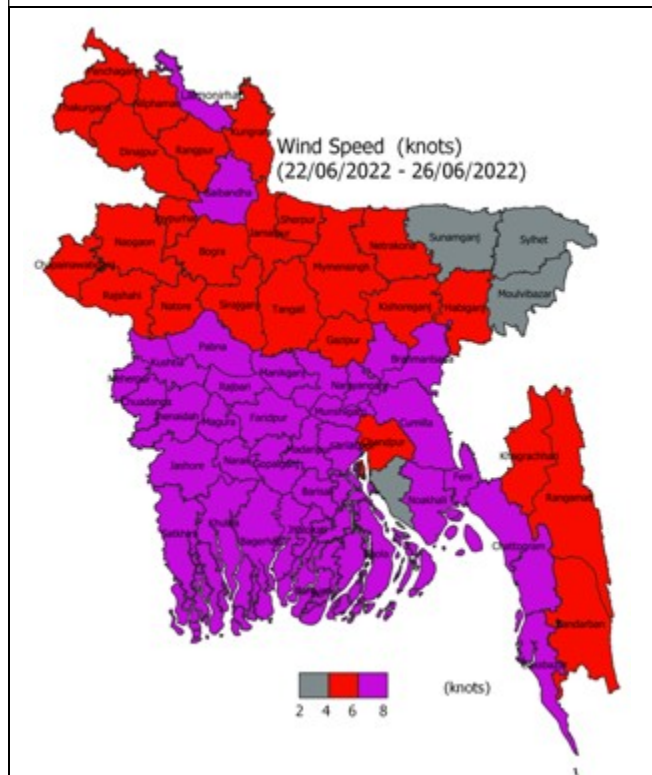
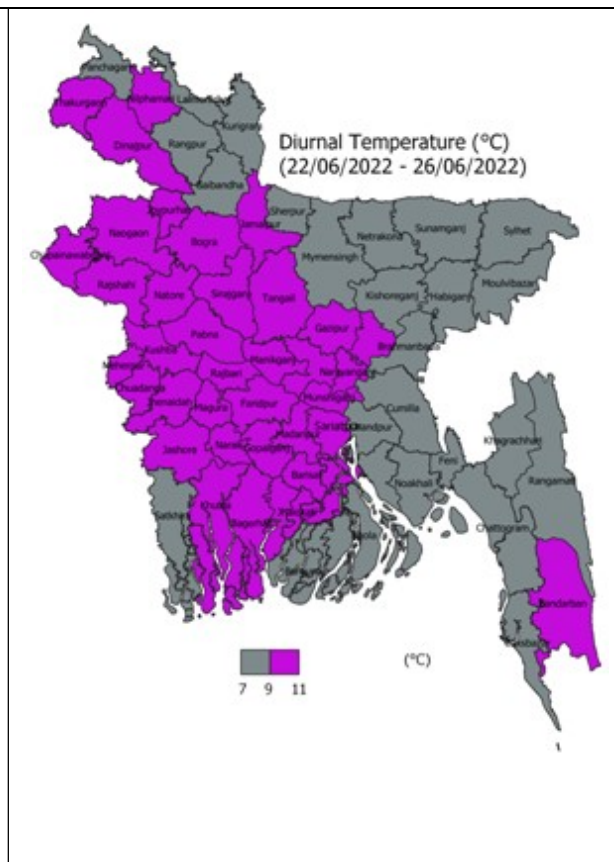
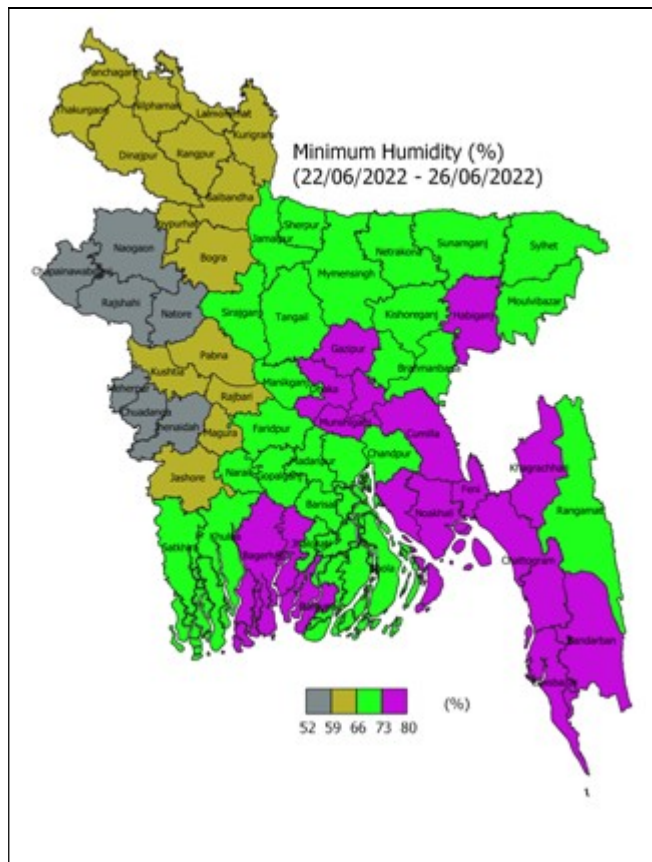
### **Weather Forecast and Advisory for the Period of 15.06.2022 to 21.06.2022**

Bright sunshine hour is likely to be from 2.50 to 3.50 hours per day during this week. Average free water loss is likely to be from 3.00 to 4.00 mm per day during this week.

- Monsoon is active over Northern & central part of Bangladesh and moderate over North Bay.
- Moderate (11-22 mm/day) to moderately heavy (23-43 mm/day) rain /thunder showers accompanied by temporary gusty/squally wind is likely to occur at most places (more than 75% area) over Rangpur, Mymensingh & Sylhet divisions with heavy (44-88 mm/day) to very heavy (more than 88 mm/day) falls at places.
- Light (04-10 mm/day) to moderate (11-22 mm/day) rain /thunder showers accompanied by temporary gusty/squally wind is likely to occur at many places (50%-75% area) over Dhaka, Rajshahi & Chattogram divisions with moderately heavy (23-43 mm/day) to heavy (44-88 mm/day) falls at places.
- Light (04-10 mm/day) to moderate (11-22 mm/day) rain /thunder showers accompanied by temporary gusty/squally wind is likely to occur at a few places (25%-50% area) over Khulna & Barishal divisions with moderately heavy (23-43 mm/day) to heavy (44-88 mm/day) falls at places.
- Day & night temperature may remain nearly unchanged over northern part and may fall by 1-2°C elsewhere over the country.
- All related departments are requested to take necessary precautions due to heavy to very heavy rainfall over Sylhet, Mymensingh & Rangpur divisions including Haor region of Bangladesh.

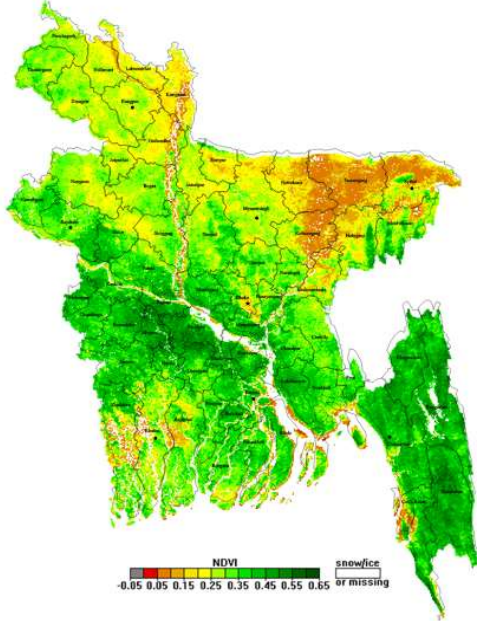
### **District Wise Quantitative Weather Forecast for next Five days from 22 June-26 June 2022**



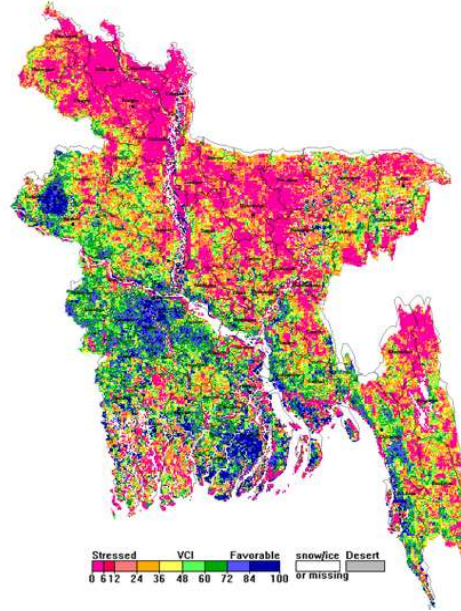


## Different Satellite Products over Bangladesh

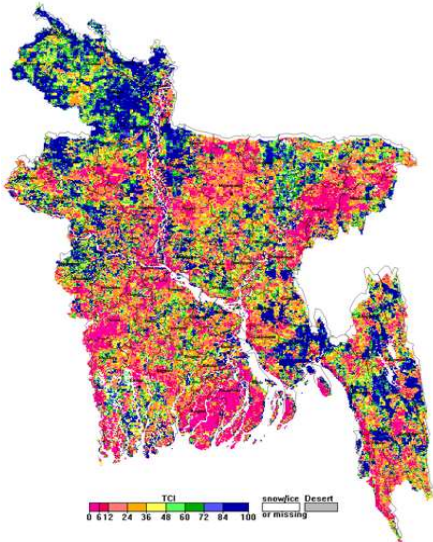
NOAA/VIIRS BLENDED NDVI composite for the week. No. 24 (04 June-10 June) over Agricultural regions of Bangladesh



NOAA/ AVHRR BLENDED VCI composite for the week No. 24 (04 June-10 June) over Agricultural regions of Bangladesh



NOAA/ AVHRR BLENDED TCI composite for the week No. 24 (04 June-10 June) over Agricultural regions of Bangladesh



NOAA/ AVHRR BLENDED VHI composite for the week No. 24 (04 June-10 June) over Agricultural regions of Bangladesh

