



# NATIONAL AGROMETEOROLOGICAL ADVISORY SERVICE BULLETIN

**21 December 2022 (WEDNESDAY)**  
**[FOR THE PERIOD 21.12.2022 – 25.12.2022]**



## DISCLAIMER

Under the Agro-meteorological Information System Development Project, Agromet Advisory Service Bulletins at National & Sixty Four (64) districts have been prepared on experimental basis. These bulletins are being displayed through the website of Department of Agricultural Extension for valuable comments/ suggestions from all concerned.

## ISSUED BY

Agro-Meteorological Information Systems  
Development Project  
Department of Agricultural Extension (DAE)  
Ministry of Agriculture  
In collaboration with Bangladesh  
Meteorological Department

## Realized Weather at different locations in the country

**Rainfall for last 24 hours (till 06 AM on 21 December 2022) and maximum temperature on 20 December and minimum temperature on 21 December 2022 is given below:**

Name of Divisions	Name of Stations	Rain fall (mm)	ax. Temp (°C)	Min. Temp (°C)	Name of Divisions	Name of Stations	Rain fall (mm)	Max. Temp (°C)	Min. Temp (°C)
Dhaka	Dhaka	00	27.0	16.2	Chattogram	Chattogram	00	26.9	16.6
	Tangail	00	27.5	15.6		Sandwip	00	28.4	14.2
	Faridpur	00	27.3	16.0		Sitakunda	00	28.5	13.6
	Madaripur	00	26.2	15.0		Rangamati	00	27.5	14.5
	Gopalganj	00	26.5	15.5		Cumilla	00	27.0	12.6
	Nikli	00	27.5	12.5		Chandpur	00	28.0	16.7
Rajshahi	Rajshahi	00	26.5	15.0		M.Court	00	26.6	16.0
	Ishurdi	00	26.2	14.0		Feni	00	29.5	13.0
	Bogura	00	27.6	15.6		Hatiya	00	27.2	15.1
	Badalgachhi	00	27.6	14.1		Cox's Bazar	00	28.4	17.2
	Tarash	00	27.4	15.8	Kutubdia	00	28.1	16.2	
Rangpur	Rangpur	00	27.7	15.4	Khulna	Teknaf	00	<u>29.8</u>	19.7
	Dinajpur	00	27.4	14.5		Khulna	00	27.0	16.0
	Sayedpur	00	28.2	14.5		Mongla	00	26.8	16.8
	Tetulia	00	26.9	12.3		Satkhira	00	26.9	14.5
	Dimla	00	27.0	14.5		Jashore	00	27.4	14.6
	Rajarhat	00	27.0	13.2		Chuadanga	00	26.5	13.8
	Mymensingh	Mymensingh	00	26.6		13.8	Barishal	Kumarkhali	00
Netrokona		00	26.6	14.5	Barishal	00		27.8	14.1
Sylhet	Sylhet	00	27.5	16.0	Patuakhali	00		27.5	15.8
	Srimangal	00	27.6	<u>11.7</u>	Khepupara	00		27.6	15.0
					Bhola	00	27.3	14.2	

### Highlights:

- Country average bright sunshine hour was 5.70 hours per day during last week.
- Country average free water loss during the previous week was 2.36 mm per day.

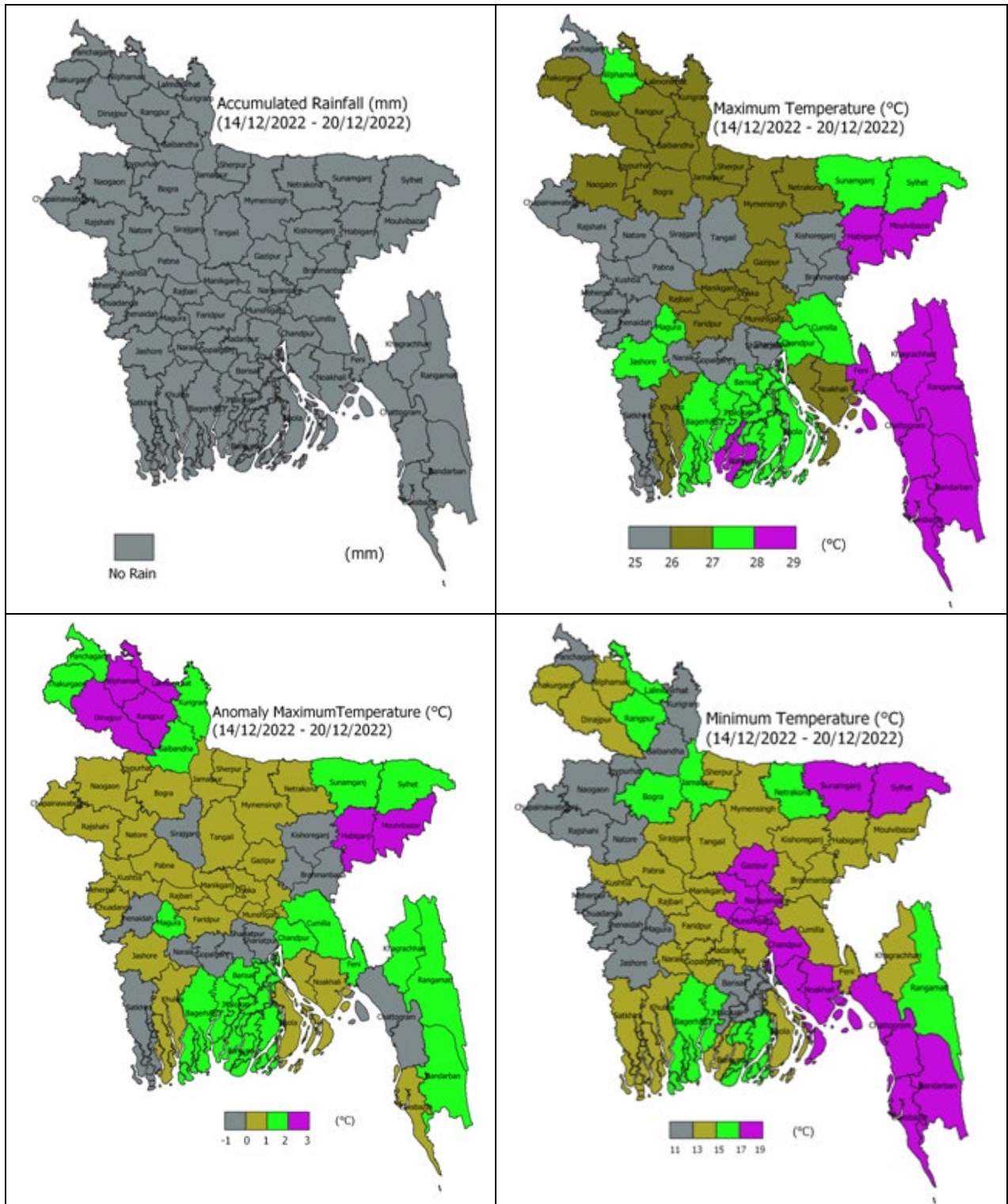
### Weather Forecast Valid for 24 Hours commencing 06 PM Today:

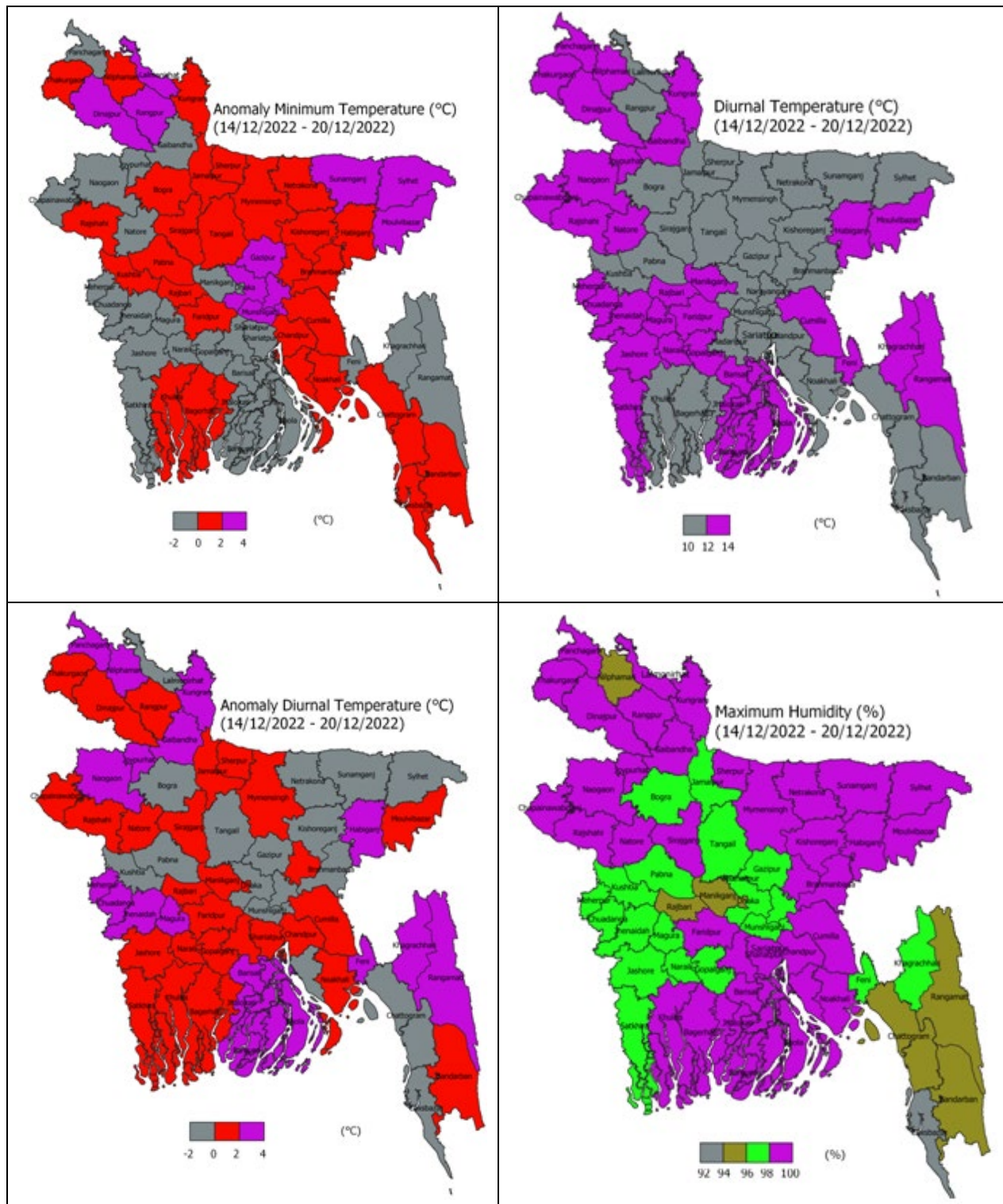
**Forecast:** Weather may remain dry with temporary partly cloudy sky over the country.

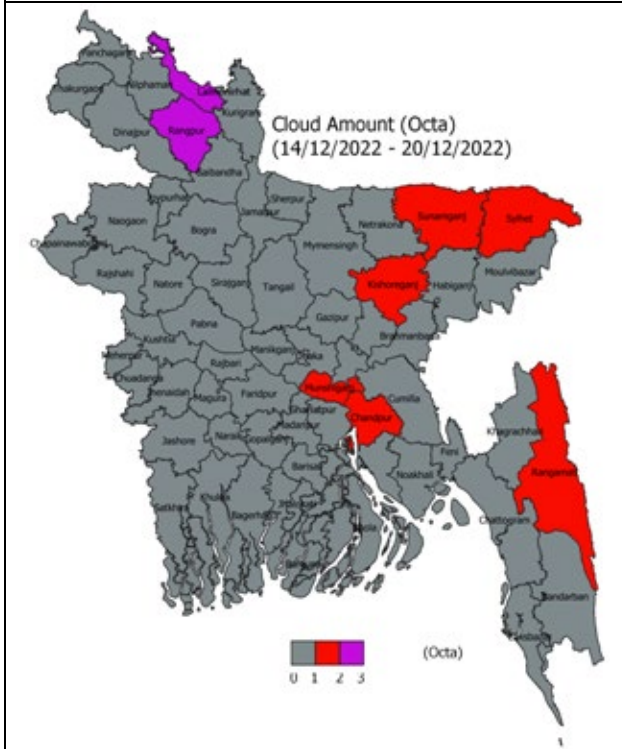
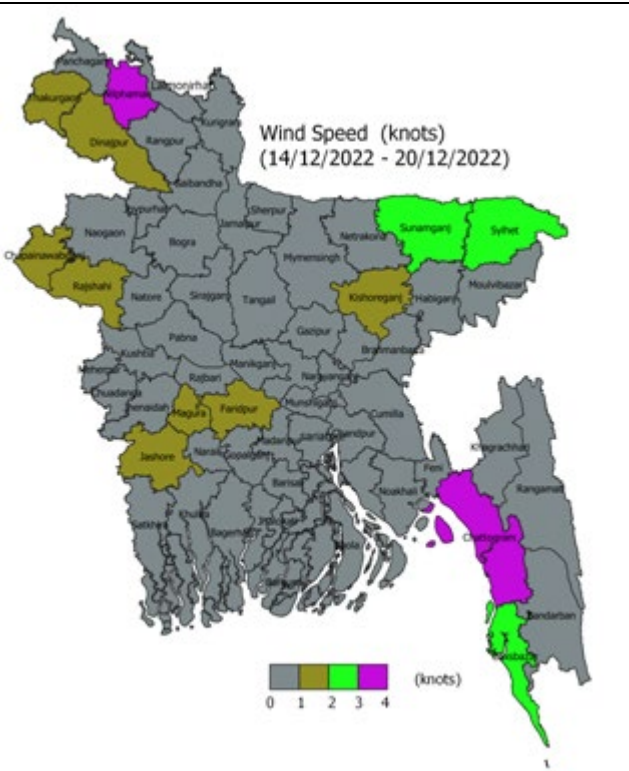
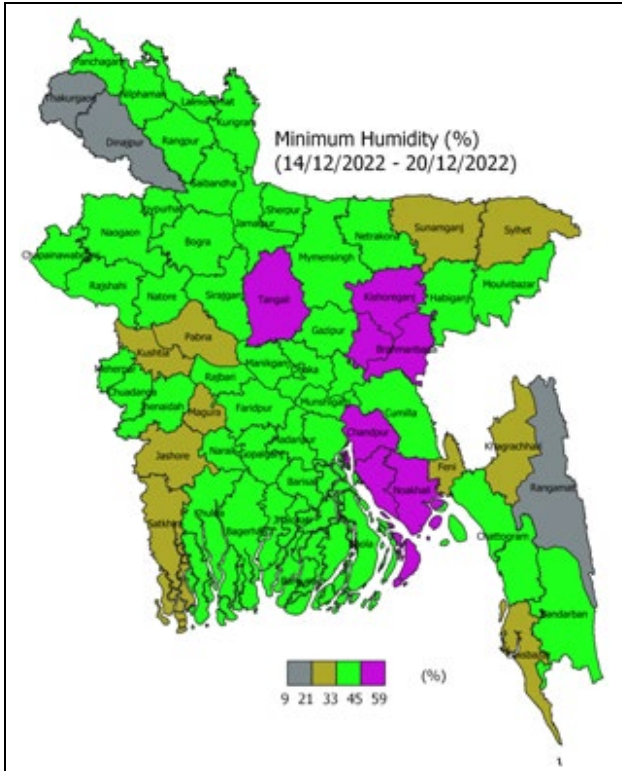
**Fog:** Moderate to thick fog may occur at places over the river basins and light to moderate fog may occur at places elsewhere over the country during midnight to morning.

**Temperature:** Night and day temperature may remain nearly unchanged over the country.

**Spatial Distribution of weather parameters for the Week ending 20 December 2022**





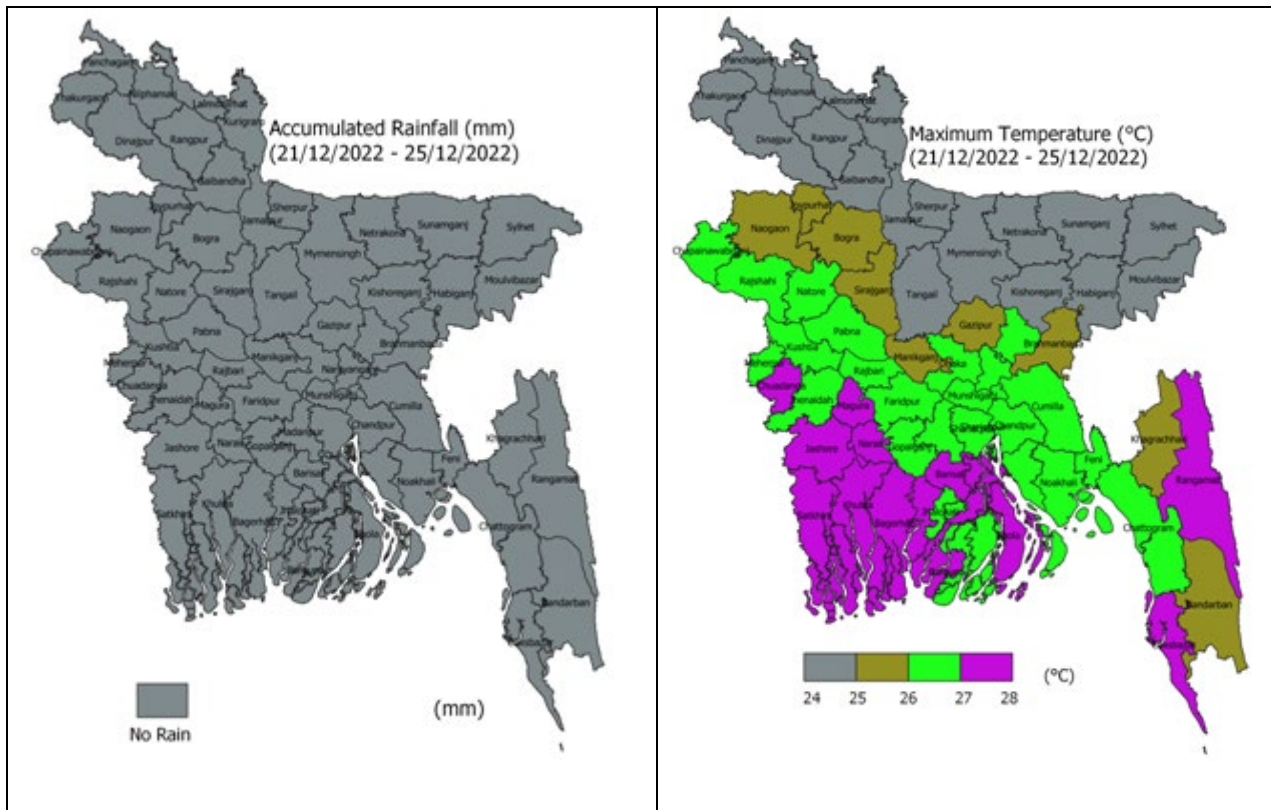


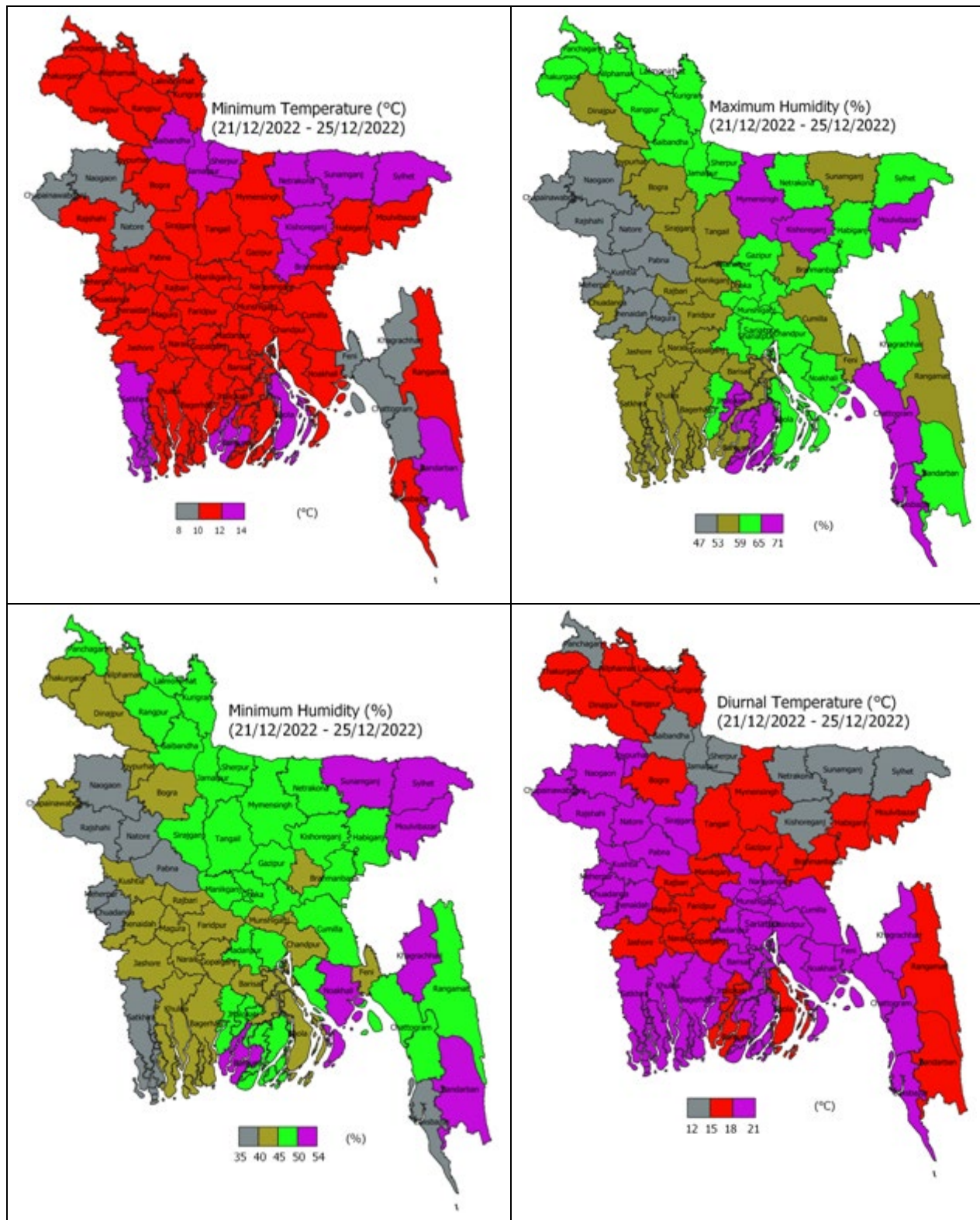
**Weather Forecast and Advisory for the Period of 22.12.2022 to 31.12.2022**

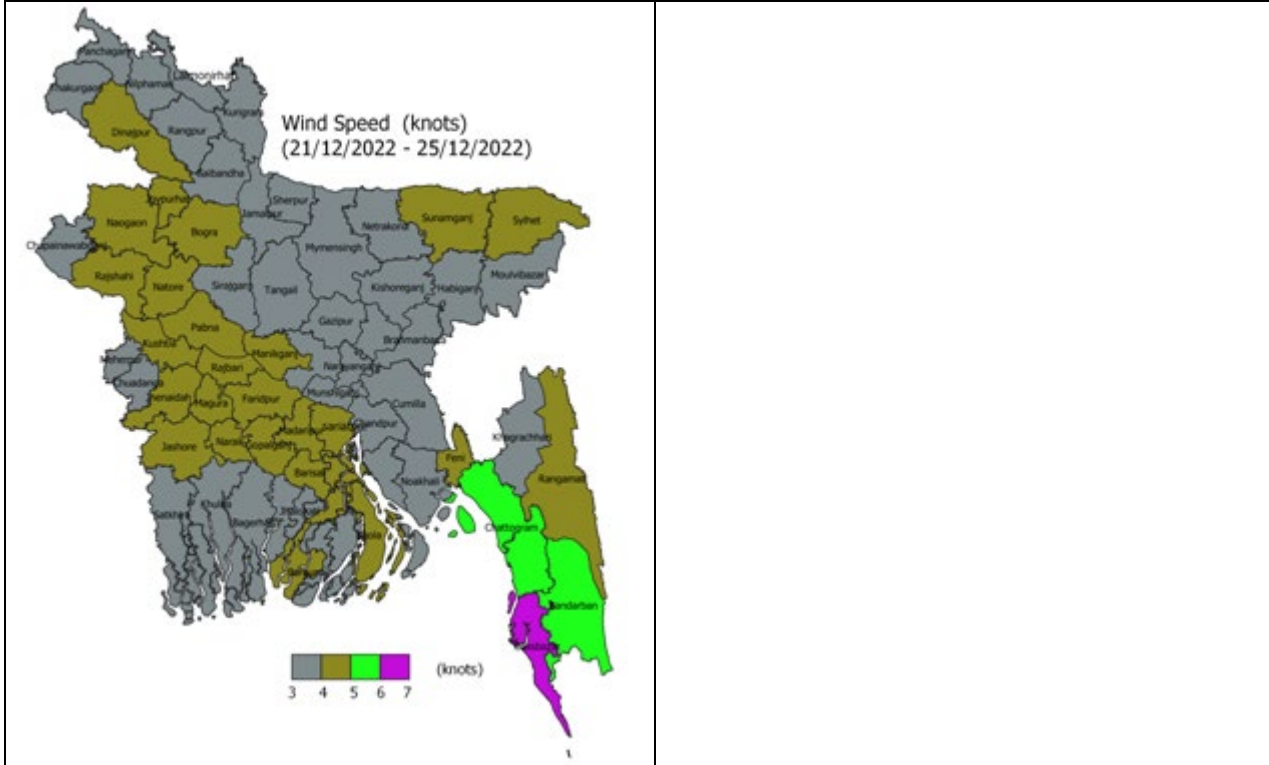
Bright sunshine hour is likely to be from 5.00 to 7.00 hours per day during this week. Average free water loss is likely to be from 2.00 to 3.00 mm per day during this week.

- Weather may remain dry with temporary partly cloudy sky over the country during 1st half of this period.
- Chances of light rain /drizzle is likely to occur at one or two places over Chattogram, Sylhet & Mymensingh divisions & weather may remain dry with temporary partly cloudy sky elsewhere over the country during the 2nd half of this period.
- Moderate to thick fog may occur at places over northern part, river basin & adjoining area and Light to moderate fog may occur elsewhere over the country during late night till morning during this period.
- Night temperature may fall by 1-3°C & day temperature may remain nearly unchanged during the 2<sup>nd</sup> half of this period.
- Mild to moderate cold wave may sweep at places over northern & western part of the country during this period.

**District Wise Quantitative Weather Forecast for next Five days from 21 Dec.- 25 Dec. 2022**



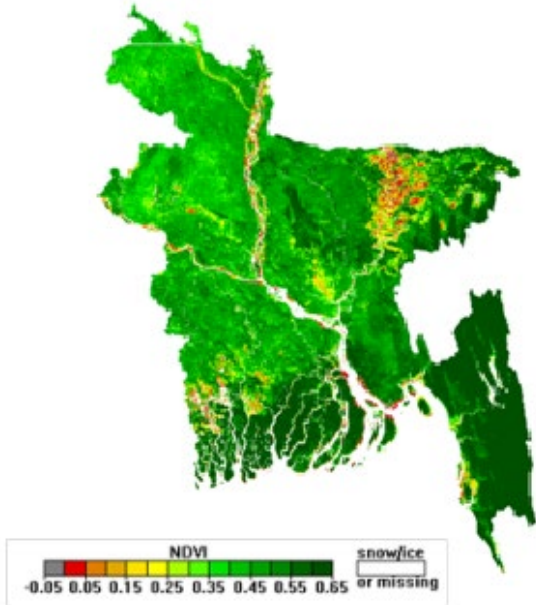




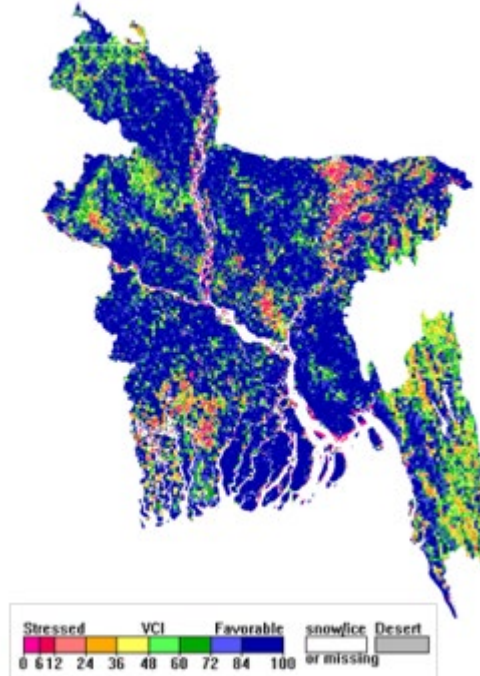


## Different Satellite Products over Bangladesh

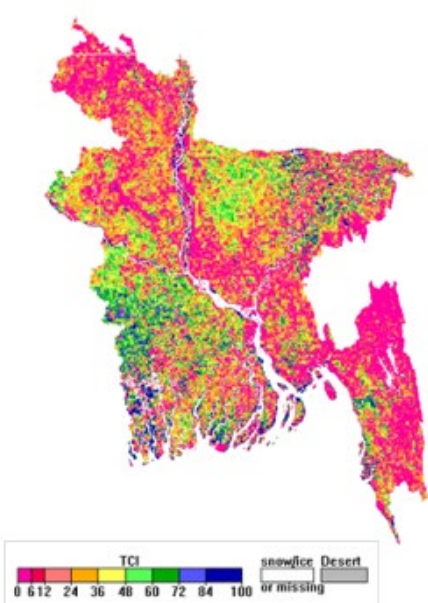
NOAA/VIIRS BLENDED NDVI composite for the week. No. 50 (09 December-15 December) over Agricultural regions of Bangladesh



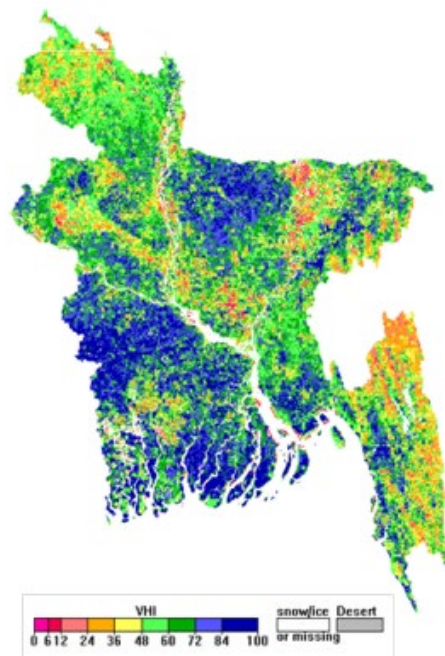
NOAA/ AVHRR BLENDED VCI composite for the week No. 50 (09 December-15 December) over Agricultural regions of Bangladesh



NOAA/ AVHRR BLENDED TCI composite for the week No. 50 (09 December-15 December) over Agricultural regions of Bangladesh



NOAA/ AVHRR BLENDED VHI composite for the week No. 50 (09 December-15 December) over Agricultural regions of Bangladesh



## Agromet Advisories

According to the medium range forecast, there is no chance of rainfall of the country in the next five days. The following agromet advisories are provided in these circumstances:

### **Rajshahi Region (Districts: Rajshahi, Chapainawabganj, Naogaon and Natore)**

#### **Wheat**

**Stage:** Vegetative Growth

- At this stage of crop and prevailing weather conditions, monitoring of termite infestation is advised in late sown wheat crop. If termite infestation is observed in the crop field, apply Chlorpyrifos group pesticide is suggested.
- If rats are noticed, arrange net to catch the same or apply zinc phosphide to control the attack of rats.
- Apply irrigation.

#### **Rice Boro**

**Stage:** Seedbed

- It is advised to prepare the seedbed in high land and also make arrangements for draining out of water and also advised for community based seedbed preparation.
- Apply light Irrigation.
- It is better to maintain water level 2-3 cm in seed bed so that it can control the weeds and seed damages due to birds.
- Cover the entire nursery bed in the night time with polythene sheets and remove in the morning to avoid the effect of cool temperatures on germination and growth of nursery. Irrigate the nursery with water in night time and remove water in early morning to speed up nursery growth in cold weather conditions. Keep 2-3 cm water level on seed bed.

#### **Vegetable**

- Present weather is congenial for sucking pests in vegetables; spray recommended pesticides.
- Under the prevailing weather condition, monitoring is advised for infestation of fruit borers in brinjal, tomato, chilli. If infestation occurs, installation of pheromone traps @ 3-4 traps per acre is advised.
- Present weather condition is favourable for the incidence of yellowish-brown spot in tomato, Spray mancozeb 2.5-3g/litres of water.
- Protect young plants of vegetable from low temperature.
- Apply Irrigation.

#### **Horticultural**

- Under the present weather conditions, there is a chance of an attack of pseudostem weevil to young banana plants of 3-4 months' age. Spray Chlorpyrifos 2 ml/liters of water.
- Weather conditions are congenial for bud rot disease in coconut; spray Bordeaux mixture 1% on spindle leaves and crown of diseased plant as well as neighbouring coconuts plants.
- To protect young fruit plants from chilly winds, cover young fruit plants with straw/polythene sheets/ gunny bags.
- Protect young plants of horticulture crops from low temperature.
- Apply Irrigation.

### **Mustard**

**Stage:** Vegetative

- The incidence of sawfly may be seen in the mustard crops. To control this pest spray Chlorpyrifos 20 EC @ 5 ml/litre of water on fair weather.
- Farmers are advised to do intercultural operations after 15-20 days of sowing for conserving the moisture and removing weeds in the mustard crop.
- Apply light irrigation.

### **Livestock**

- Give anthelmintic drugs.
- Vaccinate based on the age and physical condition of cattle.
- The temperature can be increased by lighting high-wattage bulbs in sheds.
- Feed rich feed.

### **Poultry**

- Take necessary measures to protect against fungal diseases.
- High power bulbs (100 watts or more) in the poultry shed for 1-2 hours after dusk will increase egg production and diseases will reduce.
- Protect the chicks from the cold air with plastic screens or plastic bags on all sides.
- If any disease symptoms appear, consult a veterinarian immediately for proper treatment.

### **Fishery**

- If there were fish diseases or less growth, contact the nearest Upazila fisheries office immediately.
- Reduce food in winter. Stop feeding if needed.
- Apply lime in the pond to protect fish from various bacterial diseases in winter. (250 gm/per decimal)

**Rangpur Region (Districts: Rangpur, Kurigram, Gaibandha, Nilphamari, Lalmonirhat)**

### **Wheat**

**Stage:** Vegetative Growth

- At this stage of crop and prevailing weather conditions, monitoring of termite infestation is advised in late sown wheat crop. If termite infestation is observed in the crop field, apply Chlorpyrifos group pesticide is suggested.
- If rats are noticed, arrange net to catch the same or apply zinc phosphide to control the attack of rats.
- Apply irrigation.

### **Rice Boro**

**Stage:** Transplanting

- Maintain 1-2 cm land water level.
- Dead hills are to be replanted within 7-10 days of transplanting of Boro paddy
- Seedling of 35 to 45 days old may be transplanted.
- Apply irrigation.

### **Vegetable**

- Present weather is congenial for sucking pests in vegetables; spray recommended pesticides.
- Under the prevailing weather condition, monitoring is advised for infestation of fruit borers in brinjal, tomato, chilli. If infestation occurs, installation of pheromone traps @ 3-4 traps per acre is advised.
- Present weather condition is favourable for the incidence of yellowish-brown spot in tomato, Spray mancozeb 2.5-3g/litres of water.
- Apply Irrigation.

### **Horticultural**

- Weather conditions are congenial for bud rot disease in coconut; spray Bordeaux mixture 1% on spindle leaves and crown of diseased plant as well as neighboring coconuts plants.
- Under the present weather conditions, there is a chance of an attack of pseudostem weevil to young banana plants of 3-4 months' age. Spray Chlorpyrifos 2 ml/liters of water.
- Apply Irrigation.

### **Mustard**

**Stage:** Vegetative

- The incidence of sawfly may be seen in the mustard crops. To control this pest spray Chlorpyrifos 20 EC @ 5 ml/litre of water on fair weather.
- Farmers are advised to do intercultural operations after 15-20 days of sowing for conserving the moisture and removing weeds in the mustard crop.
- Apply light irrigation.

### **Livestock**

- Give anthelmintic drugs.
- Vaccinate based on the age and physical condition of cattle.
- The temperature can be increased by lighting high-wattage bulbs in sheds.
- Feed rich feed.

### **Poultry**

- Take necessary measures to protect against fungal diseases.
- If any disease symptoms appear, consult a veterinarian immediately for proper treatment.

### **Fishery**

- If there were fish diseases or less growth, contact the nearest Upazila fisheries office immediately.
- Reduce food in winter. Stop feeding if needed.
- Apply lime in the pond to protect fish from various bacterial diseases in winter. (250 gm/per decimal)

## **Dinajpur Region (Districts: Dinajpur, Thakurgaon and Panchagarh)**

### **Wheat**

#### **Stage: Vegetative Growth**

- At this stage of crop and prevailing weather conditions, monitoring of termite infestation are advised in late sown wheat crop. If termite infestation is observed in the crop field, apply Chlorpyrifos group pesticide is suggested.
- If rats are noticed, arrange net to catch the same or apply zinc phosphide to control the attack of rats.
- Apply irrigation.

### **Rice Boro**

#### **Stage: Transplanting**

- Maintain 1-2 cm land water level.
- Dead hills are to be replanted within 7-10 days of transplanting of Boro paddy
- Seedling of 35 to 45 days old may be transplanted.
- Apply irrigation.

### **Vegetable**

- Present weather is congenial for sucking pests in vegetables; spray recommended pesticides.

- Under the prevailing weather condition, monitoring is advised for infestation of fruit borers in brinjal, tomato, chilli. If infestation occurs, installation of pheromone traps @ 3-4 traps per acre is advised.
- Present weather condition is favourable for the incidence of yellowish-brown spot in tomato, Spray mancozeb 2.5-3g/litres of water.
- Apply Irrigation.

### **Horticultural**

- Weather conditions are congenial for bud rot disease in coconut; spray Bordeaux mixture 1% on spindle leaves and crown of diseased plant as well as neighbouring coconuts plants.
- Under the present weather conditions, there is a chance of an attack of pseudostem weevil to young banana plants of 3-4 months' age. Spray Chlorpyrifos 2 ml/liters of water.
- Apply Irrigation.

### **Mustard**

**Stage:** Vegetative

- The incidence of sawfly may be seen in the mustard crops. To control this pest spray Chlorpyrifos 20 EC @ 5 ml/litre of water on fair weather.
- Farmers are advised to do intercultural operations after 15-20 days of sowing for conserving the moisture and removing weeds in the mustard crop.
- Apply Irrigation.

### **Livestock**

- If any disease symptoms appear, consult a veterinarian immediately for proper treatment.
- The temperature can be increased by lighting high-wattage bulbs in sheds.
- Feed rich feed.

### **Poultry**

- Take necessary measures to protect against fungal diseases.
- If any disease symptoms appear, consult a veterinarian immediately for proper treatment.

### **Fishery**

- If there were fish diseases or less growth, contact the nearest Upazila fisheries office immediately.
- Reduce food in winter. Stop feeding if needed.
- Apply lime in the pond to protect fish from various bacterial diseases in winter. (250 gm/per decimal)

## **Bogura Region (Districts: Bogura, Joypurhat, Pabna, Sirajganj)**

### **Wheat**

**Stage:** Vegetative Growth

- At this stage of crop and prevailing weather conditions, monitoring of termite infestation are advised in late sown wheat crop. If termite infestation is observed in the crop field, apply Chlorpyrifos group pesticide is suggested.
- If rats are noticed, arrange net to catch the same or apply zinc phosphide to control the attack of rats.
- Apply irrigation.

## **Rice Boro**

### **Stage: Seedbed**

- It is advised to prepare the seedbed in high land and also make arrangements for draining out of water and also advised for community based seedbed preparation.
- Apply light Irrigation.
- It is better to maintain water level 2-3 cm in seed bed so that it can control the weeds and seed damages due to birds.
- Cover the entire nursery bed in the night time with polythene sheets and remove in the morning to avoid the effect of cool temperatures on germination and growth of nursery. Irrigate the nursery with water in night time and remove water in early morning to speed up nursery growth in cold weather conditions.

## **Vegetable**

- Present weather is congenial for sucking pests in vegetables; spray recommended pesticides.
- Under the prevailing weather condition, monitoring is advised for infestation of fruit borers in brinjal, tomato, chilli. If infestation occurs, installation of pheromone traps @ 3-4 traps per acre is advised.
- Present weather condition is favourable for the incidence of yellowish-brown spot in tomato, Spray mancozeb 2.5-3g/litres of water.
- Apply Irrigation.

## **Horticultural**

- Weather conditions are congenial for bud rot disease in coconut; spray Bordeaux mixture 1% on spindle leaves and crown of diseased plant as well as neighbouring coconuts plants.
- Under the present weather conditions, there is a chance of an attack of pseudostem weevil to young banana plants of 3-4 months' age. Spray Chlorpyrifos 2 ml/liters of water.
- Apply Irrigation.

## **Mustard**

### **Stage: Vegetative**

- The incidence of sawfly may be seen in the mustard crops. To control this pest spray Chlorpyrifos 20 EC @ 5 ml/litre of water on fair weather.
- Farmers are advised to do intercultural operations after 15-20 days of sowing for conserving the moisture and removing weeds in the mustard crop.

- Apply Irrigation.

### **Livestock**

- If any disease symptoms appear, consult a veterinarian immediately for proper treatment.
- Vaccinate based on the age and physical condition of cattle.
- The temperature can be increased by lighting high-wattage bulbs in sheds.
- Feed rich feed.

### **Poultry**

- Take necessary measures to protect against fungal diseases.
- If any disease symptoms appear, consult a veterinarian immediately for proper treatment.

### **Fishery**

- If there were fish diseases or less growth, contact the nearest Upazila fisheries office immediately.
- Reduce food in winter. Stop feeding if needed.
- Apply lime in the pond to protect fish from various bacterial diseases in winter. (250 gm/per decimal)

## **Sylhet Region (Districts: Sylhet, Moulvibazar, Sunamganj, Habiganj)**

### **Wheat**

#### **Stage: Vegetative Growth**

- At this stage of crop and prevailing weather conditions, monitoring of termite infestation are advised in late sown wheat crop. If termite infestation is observed in the crop field, apply Chlorpyrifos group pesticide is suggested.
- If rats are noticed, arrange net to catch the same or apply zinc phosphide to control the attack of rats.
- Apply irrigation.

### **Rice Boro**

#### **Stage: Tillering**

- Keep the field and irrigation channel weed free.
- Maintain 5-7 cm land water level.
- Apply irrigation.

### **Vegetable**

- Present weather is congenial for sucking pests in vegetables; spray recommended pesticides.



- Under the prevailing weather condition, monitoring is advised for infestation of fruit borers in brinjal, tomato, chilli. If infestation occurs, installation of pheromone traps @ 3-4 traps per acre is advised.
- Present weather condition is favourable for the incidence of yellowish-brown spot in tomato, Spray mancozeb 2.5-3g/litres of water.
- Apply Irrigation.

### **Horticultural**

- Weather conditions are congenial for bud rot disease in coconut; spray Bordeaux mixture 1% on spindle leaves and crown of diseased plant as well as neighbouring coconuts plants.
- Under the present weather conditions, there is a chance of an attack of pseudostem weevil to young banana plants of 3-4 months' age. Spray Chlorpyrifos 2 ml/liters of water.
- Apply Irrigation.

### **Mustard**

**Stage:** Vegetative

- The incidence of sawfly may be seen in the mustard crops. To control this pest spray Chlorpyrifos 20 EC @ 5 ml/litre of water on fair weather.
- Farmers are advised to do intercultural operations after 15-20 days of sowing for conserving the moisture and removing weeds in the mustard crop.
- Apply Irrigation.

### **Livestock**

- If any disease symptoms appear, consult a veterinarian immediately for proper treatment.
- The temperature can be increased by lighting high-wattage bulbs in sheds.
- Feed rich feed.

### **Poultry**

- Take necessary measures to protect against fungal diseases.
- If any disease symptoms appear, consult a veterinarian immediately for proper treatment.

### **Fishery**

- If there were fish diseases or less growth, contact the nearest Upazila fisheries office immediately.
- Reduce food in winter. Stop feeding if needed.
- Apply lime in the pond to protect fish from various bacterial diseases in winter. (250 gm/per decimal)

## Rangamati Region (Districts: Rangamati, Khagrachari and Bandarban)

### Rice Boro

**Stage:** Transplanting

- The main field should be prepared for transplanting of boro paddy with 3-4 times ploughing followed by laddering and leveling should be done properly to retain water uniformity.
- Maintain 1-2 cm land water level.
- Dead hills are to be replanted within 7-10 days of transplanting of Boro paddy
- Apply 13 kg urea (1/3 of total urea) as first basal dose and also 13 kg TSP, 20 kg MOP, 15kg gypsum and 15 kg zinc per bigha after complete preparation of field.
- Seedling of 35 to 45 days old may be transplanted.
- Apply irrigation.

### Vegetable

- Present weather is congenial for sucking pests in vegetables; spray recommended pesticides.
- Under the prevailing weather condition, monitoring is advised for infestation of fruit borers in brinjal, tomato, chilli. If infestation occurs, installation of pheromone traps @ 3-4 traps per acre is advised.
- Apply Irrigation.

### Horticultural

- Weather conditions are congenial for bud rot disease in coconut; spray Bordeaux mixture 1% on spindle leaves and crown of diseased plant as well as neighbouring coconuts plants.
- Under the present weather conditions, there is a chance of an attack of pseudostem weevil to young banana plants of 3-4 months' age. Spray Chlorpyrifos 2 ml/liters of water.
- Apply Irrigation.

### Mustard

**Stage:** Vegetative

- Present weather conditions and at this stage of crop, the incidence of sawfly may be seen in the mustard crops. To control this pest spray Chlorpyrifos 20 EC @ 5 ml/litre of water on fair weather.
- Apply light irrigation.

### Livestock

- The temperature can be increased by lighting high-wattage bulbs in sheds.
- Feed rich feed.

## **Poultry**

- Take necessary measures to protect against fungal diseases.

## **Fishery**

- Repair the pond's bank if damaged.
- Reduce food in winter. Stop feeding if needed.
- Apply lime in the pond to protect fish from various bacterial diseases in winter. (250 gm/per decimal)

## **Barishal Region (Districts: Jhalakati, Patuakhali, Pirujpur, Barguna, Barishal, Bhola)**

## **Wheat**

### **Stage: Vegetative Growth**

- At this stage of crop and prevailing weather conditions, monitoring of termite infestation is advised in late sown wheat crop. If termite infestation is observed in the crop field, apply Chlorpyrifos group pesticide is suggested.
- If rats are noticed, arrange net to catch the same or apply zinc phosphide to control the attack of rats.
- Do thinning operations if the plants have been sown in dense condition.
- Apply irrigation.

## **Rice Boro**

### **Stage: Transplanting**

- The main field should be prepared for transplanting of boro paddy with 3-4 times ploughing followed by laddering and leveling should be done properly to retain water uniformity.
- Maintain 1-2 cm land water level.
- Dead hills are to be replanted within 7-10 days of transplanting of Boro paddy
- Apply 13 kg urea (1/3 of total urea) as first basal dose and also 13 kg TSP, 20 kg MOP, 15kg gypsum and 15 kg zinc per bigha after complete preparation of field.
- Seedling of 35 to 45 days old may be transplanted.
- Apply irrigation.

## **Vegetable**

- Present weather is congenial for sucking pests in vegetables; spray recommended pesticides.

- Under the prevailing weather condition, monitoring is advised for infestation of fruit borers in brinjal, tomato, chilli. If infestation occurs, installation of pheromone traps @ 3-4 traps per acre is advised.
- Apply Irrigation.

### **Horticultural**

- Weather conditions are congenial for bud rot disease in coconut; spray Bordeaux mixture 1% on spindle leaves and crown of diseased plant as well as neighbouring coconuts plants.
- Under the present weather conditions, there is a chance of an attack of pseudostem weevil to young banana plants of 3-4 months' age. Spray Chlorpyrifos 2 ml/liters of water.
- Apply Irrigation.

### **Mustard**

**Stage:** Vegetative

- The incidence of sawfly may be seen in the mustard crops. To control this pest spray Chlorpyrifos 20 EC @ 5 ml/litre of water on fair weather.
- Farmers are advised to do intercultural operations after 15-20 days of sowing for conserving the moisture and removing weeds in the mustard crop.
- Apply Irrigation.

### **Livestock**

- The temperature can be increased by lighting high-wattage bulbs in sheds.
- Feed rich feed.

### **Poultry**

- Take necessary measures to protect against fungal diseases.
- If any disease symptoms appear, consult a veterinarian immediately for proper treatment.

### **Fishery**

- Repair the pond's bank if damaged.
- Reduce food in winter. Stop feeding if needed.
- Apply lime in the pond to protect fish from various bacterial diseases in winter. (250 gm/per decimal)

**Jashore Region (Districts: Jashore, Kushtia, Chuadanga, Jhenaidah, Meherpur, Magura)**

### **Wheat**

**Stage:** Vegetative Growth

- At this stage of crop and prevailing weather conditions, monitoring of termite infestation is advised in late sown wheat crop. If termite infestation is observed in the crop field, apply Chlorpyrifos group pesticide is suggested.
- If rats are noticed, arrange net to catch the same or apply zinc phosphide to control the attack of rats.
- Do thinning operations if the plants have been sown in dense condition.
- Apply irrigation.

### **Vegetable**

- Present weather is congenial for sucking pests in vegetables; spray recommended pesticides.
- Under the prevailing weather condition, monitoring is advised for infestation of fruit borers in brinjal, tomato, chilli. If infestation occurs, installation of pheromone traps @ 3-4 traps per acre is advised.
- Present weather condition is favourable for the incidence of yellowish-brown spot in tomato, Spray mancozeb 2.5-3g/litres of water.
- Apply Irrigation.

### **Horticultural**

- Weather conditions are congenial for bud rot disease in coconut; spray Bordeaux mixture 1% on spindle leaves and crown of diseased plant as well as neighbouring coconuts plants.
- Under the present weather conditions, there is a chance of an attack of pseudostem weevil to young banana plants of 3-4 months' age. Spray Chlorpyrifos 2 ml/liters of water.
- Apply Irrigation.

### **Mustard**

**Stage:** Flowering

- Advice for wedding's in mustard fields.

### **Livestock**

- Give anthelmintic drugs.
- Vaccinate based on the age and physical condition of cattle.
- Take necessary steps to protect against external parasites.
- The temperature can be increased by lighting high-wattage bulbs in sheds.
- Feed rich feed.
- If any disease symptoms appear, seek veterinary advice immediately.

### **Poultry**

- Take necessary measures to protect against fungal diseases.
- If any disease symptoms appear, consult a veterinarian immediately for proper treatment.

### **Fishery**

- Repair the pond's bank if damaged.

- Reduce food in winter. Stop feeding if needed.
- Application of 250 grams of lime per decimal at the beginning of winter helps to get rid of fish diseases.

### **Faridpur Region (Districts: Faridpur, Rajbari, Madaripur, Shariatpur and Gopalganj)**

#### **Wheat**

**Stage:** Vegetative Growth

- Monitoring of termite infestation is advised in late sown wheat crop. If termite infestation is observed in the crop field, apply Chlorpyrifos group pesticide.
- If rats are noticed, arrange net to catch the same or apply zinc phosphide to control the attack of rats.
- Do thinning operations if the plants have been sown in dense condition.
- Apply light irrigation.

#### **Rice Boro**

**Stage:** Transplanting

- Apply 13 kg urea as first top dressing after 20-25 days after transplanting.
- Keep the field and irrigation channel weed free. Weeding should be done before application of fertilizer and mixed the same with soil. Hand weeding or weedicides may be used for weeding. Complete one hand weeding before top dressing.
- Maintain 5-7 cm land water level.
- Apply irrigation.

#### **Vegetable**

- Present weather is congenial for sucking pests in vegetables; spray recommended pesticides.
- Under the prevailing weather condition, monitoring is advised for infestation of fruit borers in brinjal, tomato, chilli. If infestation occurs, installation of pheromone traps @ 3-4 traps per acre is advised.
- Apply Irrigation.

#### **Horticultural**

- Weather conditions are congenial for bud rot disease in coconut; spray Bordeaux mixture 1% on spindle leaves and crown of diseased plant as well as neighbouring coconuts plants.
- Under the present weather conditions, there is a chance of an attack of pseudostem weevil to young banana plants of 3-4 months' age. Spray Chlorpyrifos 2 ml/liters of water.
- Apply Irrigation.

#### **Mustard**

**Stage:** Pod initiation

**Stage:** Pod initiation

- Occurrence of sawfly may be seen in the mustard crops under the present environment conditions. To control this pest spray Chlorpyrifos 20 EC @ 5 ml/litre of water on fair weather.
- Apply light irrigation.

## **Livestock**

- The temperature can be increased by lighting high-wattage bulbs in sheds.
- Feed rich feed.

## **Poultry**

- Take necessary measures to protect against fungal diseases.

## **Fishery**

- Repair the pond's bank if damaged.
- Reduce food intake in winter. Stop feeding if necessary
- Application of 250 grams of lime per decimal at the beginning of winter helps to get rid of fish diseases.

## **Dhaka Region (Districts: Dhaka, Tangail, Gazipur, Narsingdi, Narayanganj, Munshiganj, Manikgonj)**

### **Wheat**

#### **Stage: Vegetative Growth**

- Monitoring of termite infestation is advised in late sown wheat crop. If termite infestation is observed in the crop field, apply Chlorpyrifos group pesticide.
- If rats are noticed, arrange net to catch the same or apply zinc phosphide to control the attack of rats.
- Apply light irrigation.

### **Rice Boro**

#### **Stage: Tillering**

- Apply 13 kg urea as first top dressing after 20-25 days after transplanting.
- Keep the field and irrigation channel weed free. Weeding should be done before application of fertilizer and mixed the same with soil.
- Maintain 5-7 cm land water level.
- Apply irrigation.

### **Vegetable**

- Present weather is congenial for sucking pests in vegetables; spray recommended pesticides.
- Under the prevailing weather condition, monitoring is advised for infestation of fruit borers in brinjal, tomato, chilli. If infestation occurs, installation of pheromone traps @ 3-4 traps per acre is advised.
- Present weather condition is favourable for the incidence of yellowish-brown spot in tomato, Spray mancozeb 2.5-3g/litres of water.
- Apply Irrigation.

### **Horticultural**

- Weather conditions are congenial for bud rot disease in coconut; spray Bordeaux mixture 1% on spindle leaves and crown of diseased plant as well as neighbouring coconuts plants.
- Under the present weather conditions, there is a chance of an attack of pseudostem weevil to young banana plants of 3-4 months' age. Spray Chlorpyrifos 2 ml/liters of water.
- Apply Irrigation.

## **Mustard**

**Stage:** Vegetative

- Present weather conditions and at this stage of crop, the incidence of sawfly may be seen in the mustard crops. To control this pest spray Chlorpyrifos 20 EC @ 5 ml/litre of water on fair weather.
- Farmers are advised to do intercultural operations after 15-20 days of sowing for conserving the moisture and removing weeds in the mustard crop.
- Apply light irrigation.

## **Livestock**

- Give anthelmintic drugs.
- Vaccinate based on the age and physical condition of cattle.
- Take necessary steps to protect against external parasites.
- The temperature can be increased by lighting high-wattage bulbs in sheds.
- Feed rich feed.
- If any disease symptoms appear, seek veterinary advice immediately.

## **Poultry**

- Take necessary measures to protect against fungal diseases.
- If any disease symptoms appear, consult a veterinarian immediately for proper treatment.

## **Fishery**

- If there were fish diseases or less growth, contact the nearest Upazila fisheries office immediately.
- Dry the pond and remove the black/rotten mud from the bottom.
- Start preparing the pond for the next year by harvesting all the fish if it is an annual pond.
- Repair the pond's bank if damaged.
- Reduce food in winter. Stop feeding if needed.
- Apply lime in the pond to protect fish from various bacterial diseases in winter. (250 gm/per decimal)

**Chattogram region (Districts: Chattogram, Lakshmipur, Coxsbazar, Noakhali and Feni)**

## **Rice Boro**

**Stage:** Transplanting

- The main field should be prepared for transplanting of boro paddy with 3-4 times ploughing followed by laddering and Leveling should be done properly to retain water uniformity.
- Maintain 1-2 cm land water level.
- Dead hills are to be replanted within 7-10 days of transplanting of Boro paddy



- Apply 13 kg urea (1/3 of total urea) as first basal dose and also 13 kg TSP, 20 kg MOP, 15 kg gypsum and 15 kg zinc per bigha after complete preparation of field.
- Seedling of 35 to 45 days old may be transplanted.
- Apply irrigation.

### **Vegetable**

- Present weather is congenial for sucking pests in vegetables; spray recommended pesticides.
- Under the prevailing weather condition, monitoring is advised for infestation of fruit borers in brinjal, tomato, chilli. If infestation occurs, installation of pheromone traps @ 3-4 traps per acre is advised.
- Present weather condition is favourable for the incidence of yellowish-brown spot in tomato, Spray mancozeb 2.5-3g/litres of water.
- Apply Irrigation.

### **Horticultural**

- Weather conditions are congenial for bud rot disease in coconut; spray Bordeaux mixture 1% on spindle leaves and crown of diseased plant as well as neighbouring coconuts plants.
- Under the present weather conditions, there is a chance of an attack of pseudostem weevil to young banana plants of 3-4 months' age. Spray Chlorpyrifos 2 ml/liters of water.
- Apply Irrigation.

### **Mustard**

**Stage:** Vegetative

- Present weather conditions and at this stage of crop, the incidence of sawfly may be seen in the mustard crops. To control this pest spray Chlorpyrifos 20 EC @ 5 ml/litre of water on fair weather.
- Farmers are advised to do intercultural operations after 15-20 days of sowing for conserving the moisture and removing weeds in the mustard crop.
- Apply light irrigation.

### **Livestock**

- Give anthelmintic drugs.
- Vaccinate based on the age and physical condition of cattle.
- Take necessary steps to protect against external parasites.
- The temperature can be increased by lighting high-wattage bulbs in sheds.
- Feed rich feed.
- If any disease symptoms appear, seek veterinary advice immediately.

### **Poultry**

- Take necessary measures to protect against fungal diseases.
- If any disease symptoms appear, consult a veterinarian immediately for proper treatment.

## Fishery

- If there were fish diseases or less growth, contact the nearest Upazila fisheries office immediately.
- Dry the pond and remove the black/rotten mud from the bottom.
- Start preparing the pond for the next year by harvesting all the fish if it is an annual pond.
- Repair the pond's bank if damaged.
- Reduce food in winter. Stop feeding if needed.
- Apply lime in the pond to protect fish from various bacterial diseases in winter. (250 gm/per decimal)

## Cumilla Region (Districts: Cumilla, Chandpur, Bramanbaria)

## Wheat

### Stage: Germination

- If symptoms of sulphur deficiency noticed in wheat crop, broadcast one quintal gypsum/acre followed by a light irrigation is advised.
- Do not allow standing water in the field as this will turn the green leaf to yellow in colour and also may damage the seedlings.
- Monitoring of zinc deficiency is advised in normal sown wheat crop. If deficiency occurs, spray 0.2% zinc sulphate hepta hydrate ( $ZnSO_4 \cdot 7H_2O$ ) and one supplementary dose of nitrogenous fertilizer.
- Farmers are advised to do intercultural operations for conserving the moisture and removing weeds within 25-30 days after sowing.
- Apply light irrigation.

## Rice Boro

### Stage: Tillering

- Apply 13 kg urea as first top dressing after 20-25 days after transplanting.
- Keep the field and irrigation channel weed free. Weeding should be done before application of fertilizer and mixed the same with soil.
- Maintain 5-7 cm land water level.
- Apply irrigation.

## Vegetable

- Present weather is congenial for sucking pests in vegetables; spray recommended pesticides.
- Under the prevailing weather condition, monitoring is advised for infestation of fruit borers in brinjal, tomato, chilli. If infestation occurs, installation of pheromone traps @ 3-4 traps per acre is advised.
- Present weather condition is favourable for the incidence of yellowish-brown spot in tomato, Spray mancozeb 2.5-3g/litres of water.
- Apply Irrigation.

## **Horticultural**

- Weather conditions are congenial for bud rot disease in coconut; spray Bordeaux mixture 1% on spindle leaves and crown of diseased plant as well as neighbouring coconuts plants.
- Under the present weather conditions, there is a chance of an attack of pseudostem weevil to young banana plants of 3-4 months' age. Spray Chlorpyrifos 2 ml/liters of water.
- Apply Irrigation.

## **Mustard**

**Stage:** Flowering

- Advice for weeding's in mustard fields.

## **Livestock**

- Give anthelmintic drugs.
- Vaccinate based on the age and physical condition of cattle.
- Take necessary steps to protect against external parasites.
- The temperature can be increased by lighting high-wattage bulbs in sheds.
- Feed rich feed.
- If any disease symptoms appear, seek veterinary advice immediately.

## **Poultry**

- Take necessary measures to protect against fungal diseases.
- If any disease symptoms appear, consult a veterinarian immediately for proper treatment.

## **Fishery**

- If there were fish diseases or less growth, contact the nearest Upazila fisheries office immediately.
- Dry the pond and remove the black/rotten mud from the bottom.
- Start preparing the pond for the next year by harvesting all the fish if it is an annual pond.
- Repair the pond's bank if damaged.
- Reduce food in winter. Stop feeding if needed.
- Apply lime in the pond to protect fish from various bacterial diseases in winter. (250 gm/per decimal)

## **Khulna Region (Districts: Khulna, Satkhira, Bagerhat and Narail)**

## **Wheat**

**Stage:** Vegetative Growth

- At this stage of crop and prevailing weather conditions, monitoring of termite infestation is advised in late sown wheat crop. If termite infestation is observed in the crop field, apply Chlorpyrifos group pesticide is suggested.

- If rats are noticed, arrange net to catch the same or apply zinc phosphide to control the attack of rats.
- Do thinning operations if the plants have been sown in dense condition.
- Apply light irrigation.

### **Vegetable**

- Present weather is congenial for sucking pests in vegetables; spray recommended pesticides.
- Under the prevailing weather condition, monitoring is advised for infestation of fruit borers in brinjal, tomato, chilli. If infestation occurs, installation of pheromone traps @ 3-4 traps per acre is advised.
- Present weather condition is favourable for the incidence of yellowish-brown spot in tomato, Spray mancozeb 2.5-3g/litres of water.
- Apply Irrigation.

### **Horticultural**

- Weather conditions are congenial for bud rot disease in coconut; spray Bordeaux mixture 1% on spindle leaves and crown of diseased plant as well as neighbouring coconuts plants.
- Under the present weather conditions, there is a chance of an attack of pseudostem weevil to young banana plants of 3-4 months age. Spray Chlorpyrifos 2 ml/liters of water.
- Apply Irrigation.

### **Mustard**

**Stage:** Pod initiation

- Occurrence of sawfly may be seen in the mustard crops under the present environment conditions. To control this pest spray Chlorpyrifos 20 EC @ 5 ml/litre of water on fair weather.
- The present weather condition is favorable for the incidence of powdery mildew in mustard. Spray of Carbendazim 12% + Mancozeb 62% @ 2g /litre of water is advised.
- Go for intercultural operations.
- Apply light irrigation.

### **Livestock**

- Give anthelmintic drugs.
- Vaccinate based on the age and physical condition of cattle.
- Take necessary steps to protect against external parasites.
- The temperature can be increased by lighting high-wattage bulbs in sheds.
- Feed rich feed.
- If any disease symptoms appear, seek veterinary advice immediately.

### **Poultry**

- Take necessary measures to protect against fungal diseases.
- If any disease symptoms appear, consult a veterinarian immediately for proper treatment.

### **Fishery**

- If there were fish diseases or less growth, contact the nearest Upazila fisheries office immediately.
- Dry the pond and remove the black/rotten mud from the bottom.
- Start preparing the pond for the next year by harvesting all the fish if it is an annual pond.
- Repair the pond's bank if damaged.
- Reduce food in winter. Stop feeding if needed.
- Apply lime in the pond to protect fish from various bacterial diseases in winter. (250 gm/per decimal)

## **Mymensingh Region (Districts: Mymensingh, Kishoregonj, Jamalpur, Netrokona, Sherpur)**

### **Wheat**

#### **Stage: Vegetative Growth**

- At this stage of crop and prevailing weather conditions, monitoring of termite infestation is advised in late sown wheat crop. If termite infestation is observed in the crop field, application of the mixture of 20kg sand with Chlorpyrifos group pesticide is suggested in the evening hour and thereafter irrigation is advised.
- If rats are noticed, arrange net to catch the same or apply zinc phosphide to control the attack of rats.
- Do thinning operations if the plants have been sown in dense condition.
- Apply irrigation

### **Rice Boro**

#### **Stage: Transplanting**

- Maintain 1-2 cm land water level.
- Dead hills are to be replanted within 7-10 days of transplanting of Boro paddy
- Seedling of 35 to 45 days old may be transplanted.
- Apply irrigation.

### **Vegetable**

- Present weather is congenial for sucking pests in vegetables; spray recommended pesticides.
- Under the prevailing weather condition, monitoring is advised for infestation of fruit borers in brinjal, tomato, chilli. If infestation occurs, installation of pheromone traps @ 3-4 traps per acre is advised.
- Present weather condition is favourable for the incidence of yellowish-brown spot in tomato, Spray mancozeb 2.5-3g/litres of water.
- Apply Irrigation.

### **Horticultural**

- Weather conditions are congenial for bud rot disease in coconut; spray Bordeaux mixture 1% on spindle leaves and crown of diseased plant as well as neighbouring coconuts plants.
- Under the present weather conditions, there is a chance of an attack of pseudostem weevil to young banana plants of 3-4 months' age. Spray Chlorpyrifos 2 ml/liters of water.

- Apply Irrigation.

### **Mustard**

**Stage:** Vegetative

- Present weather conditions and at this stage of crop, the incidence of sawfly may be seen in the mustard crops. To control this pest spray Chlorpyrifos 20 EC @ 5 ml/litre of water on fair weather.
- Farmers are advised to do intercultural operations after 15-20 days of sowing for conserving the moisture and removing weeds in the mustard crop.
- Apply light irrigation.

### **Livestock**

- Give anthelmintic drugs.
- Vaccinate based on the age and physical condition of cattle.
- Take necessary steps to protect against external parasites.
- The temperature can be increased by lighting high-wattage bulbs in sheds.
- Feed rich feed.
- If any disease symptoms appear, seek veterinary advice immediately.

### **Poultry**

- Take necessary measures to protect against fungal diseases.
- If any disease symptoms appear, consult a veterinarian immediately for proper treatment.

### **Fishery**

- If there were fish diseases or less growth, contact the nearest Upazila fisheries office immediately.
- Dry the pond and remove the black/rotten mud from the bottom.
- Start preparing the pond for the next year by harvesting all the fish if it is an annual pond.
- Repair the pond's bank if damaged.
- Reduce food in winter. Stop feeding if needed.
- Apply lime in the pond to protect fish from various bacterial diseases in winter. (250 gm/per decimal)