



# NATIONAL AGROMETEOROLOGICAL ADVISORY SERVICE BULLETIN

**26 January 2023 (THURSDAY)  
[FOR THE PERIOD 26.01.2023 – 30.01.2023]**



#### DISCLAIMER

Under the Agro-meteorological Information System Development Project, Agromet Advisory Service Bulletins at National & Sixty Four (64) districts have been prepared on experimental basis. These bulletins are being displayed through the website of Department of Agricultural Extension for valuable comments/ suggestions from all concerned.

#### ISSUED BY

Agro-Meteorological Information Systems  
Development Project  
Department of Agricultural Extension (DAE)  
Ministry of Agriculture  
In collaboration with Bangladesh  
Meteorological Department

## Realized Weather at different locations in the country

**Rainfall for last 24 hours (till 06 AM on 26 January 2023) and maximum temperature on 25 January and minimum temperature on 26 January 2023 is given below:**

Name of Divisions	Name of Stations	Rain fall (mm)	Max. Temp (°C)	Min. Temp (°C)	Name of Divisions	Name of Stations	Rain fall (mm)	Max. Temp (°C)	Min. Temp (°C)	
Dhaka	Dhaka	00	28.5	17.6	Chattogram	Chattogram	00	30.3	17.4	
	Tangail	00	27.1	16.0		Sandwip	00	30.2	14.5	
	Faridpur	00	28.6	16.2		Sitakunda	00	30.6	15.0	
	Madaripur	00	28.3	16.3		Rangamati	00	29.8	13.0	
	Gopalganj	00	29.0	17.0		Cumilla	00	29.5	15.4	
	Nikli	00	26.2	14.2		Chandpur	00	29.2	17.5	
Rajshahi	Rajshahi	00	27.0	15.2		M.Court	00	28.7	16.8	
	Ishurdi	00	27.0	13.8		Feni	00	30.0	15.4	
	Bogura	00	27.6	15.0		Hatiya	xx	xx	xx	
	Badalgachhi	00	27.5	12.9		Cox's Bazar	00	<b>31.8</b>	17.6	
	Tarash	00	26.0	13.2		Kutubdia	00	xx	15.5	
Rangpur	Rangpur	00	26.8	13.3		Khulna	Teknaf	00	30.5	16.0
	Dinajpur	00	27.2	12.7			Khulna	00	29.6	18.0
	Sayedpur	00	27.2	12.5			Mongla	00	30.6	17.9
	Tetulia	00	27.0	<u>10.0</u>	Satkhira		00	29.3	17.6	
	Dimla	00	27.0	11.8	Jashore		00	29.4	17.0	
	Rajarhat	00	26.0	11.5	Chuadanga		00	28.4	16.0	
					Kumarkhali		00	29.5	16.5	
Mymensingh	Mymensingh	00	27.0	14.7	Barishal	Barishal	00	30.0	15.5	
	Netrokona	00	27.0	15.0		Patuakhali	00	30.2	16.4	
Sylhet	Sylhet	00	27.5	15.5		Khepupara	00	30.9	16.3	
	Srimangal	00	28.9	11.2		Bhola	00	30.3	15.2	

### Highlights:

- Country average bright sunshine hour was 4.94 hours per day during last week.
- Country average free water loss during the previous week was 1.90 mm per day.

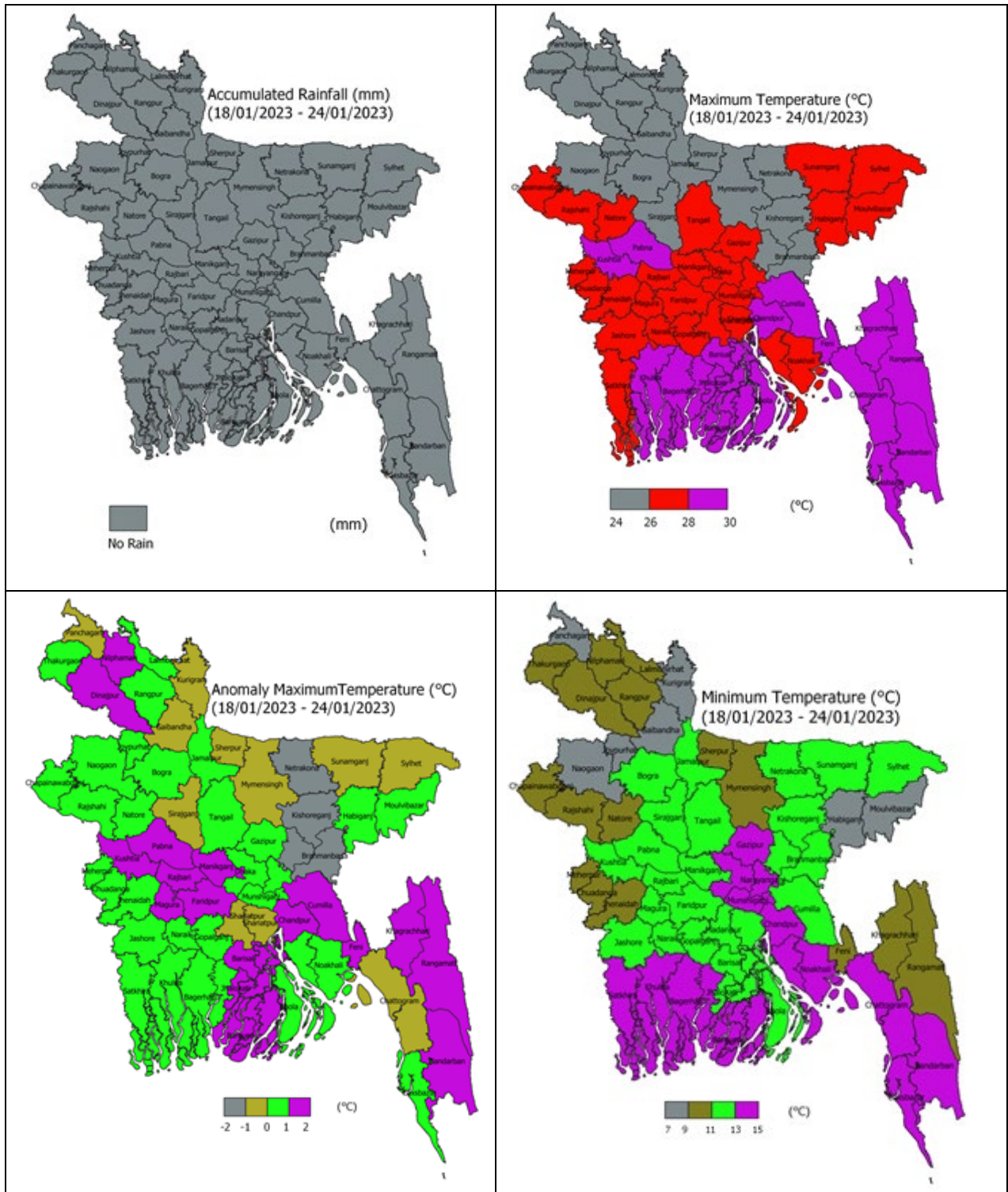
### Weather Forecast Valid for 24 Hours commencing 06 PM Today:

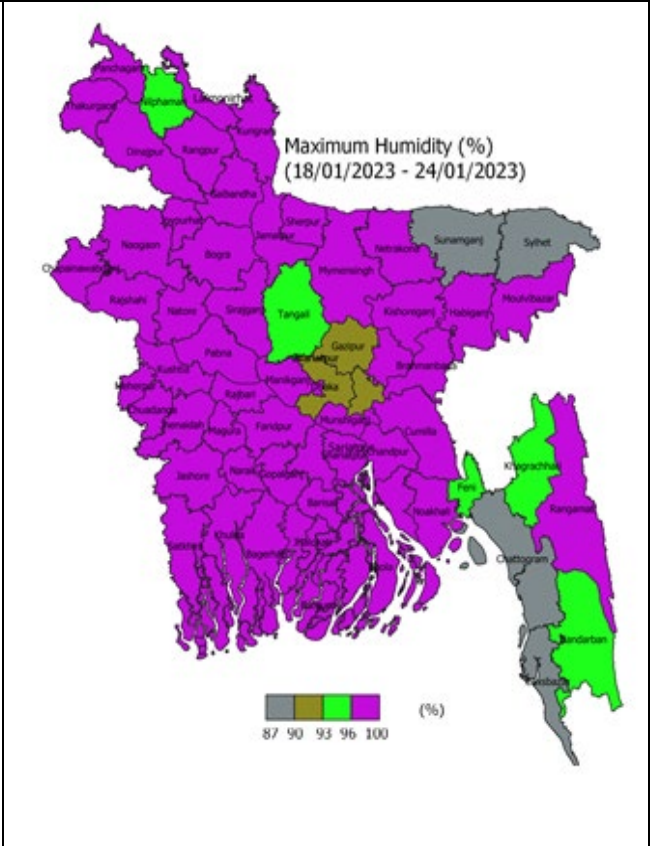
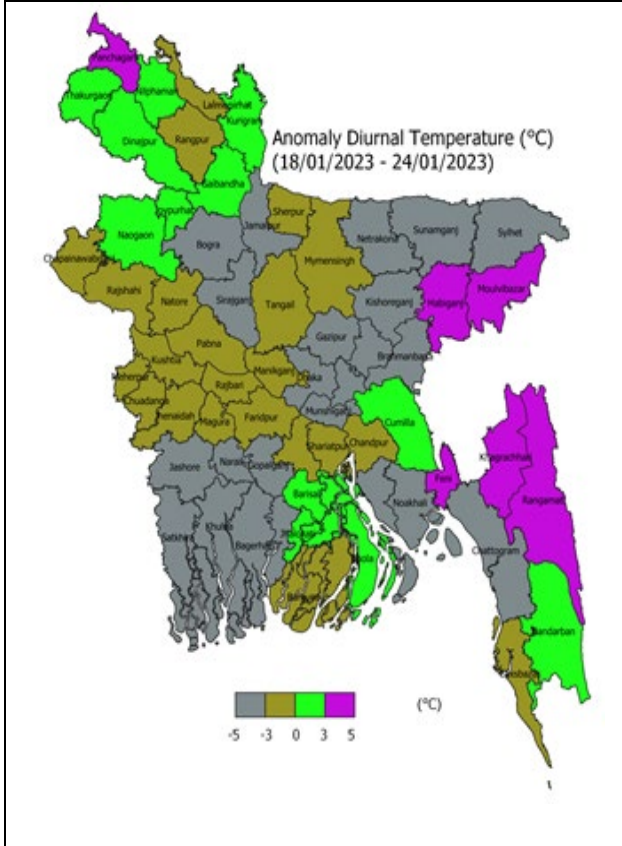
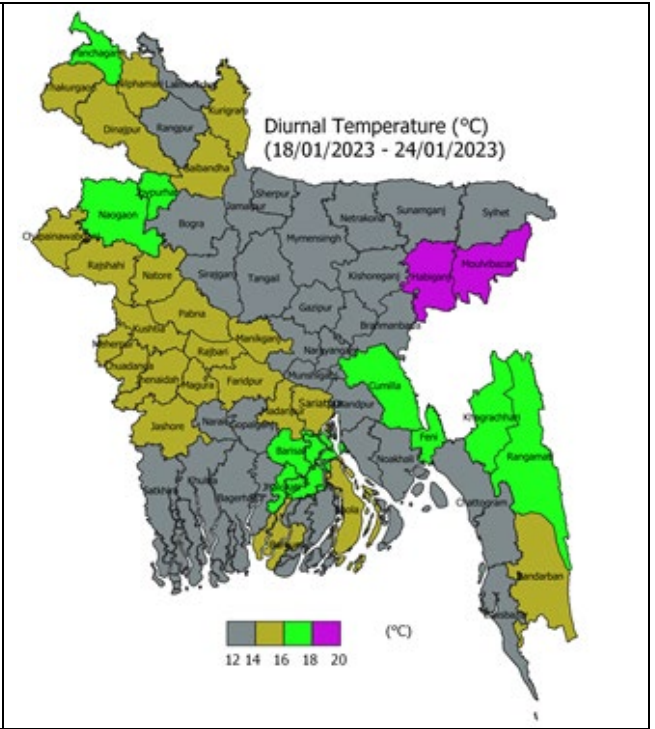
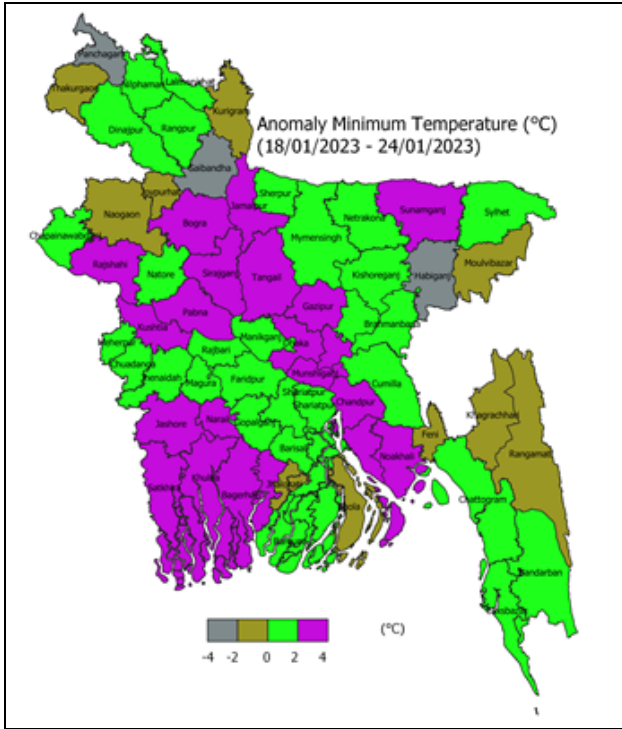
**Forecast:** Weather may remain dry with temporary partly cloudy sky over the country.

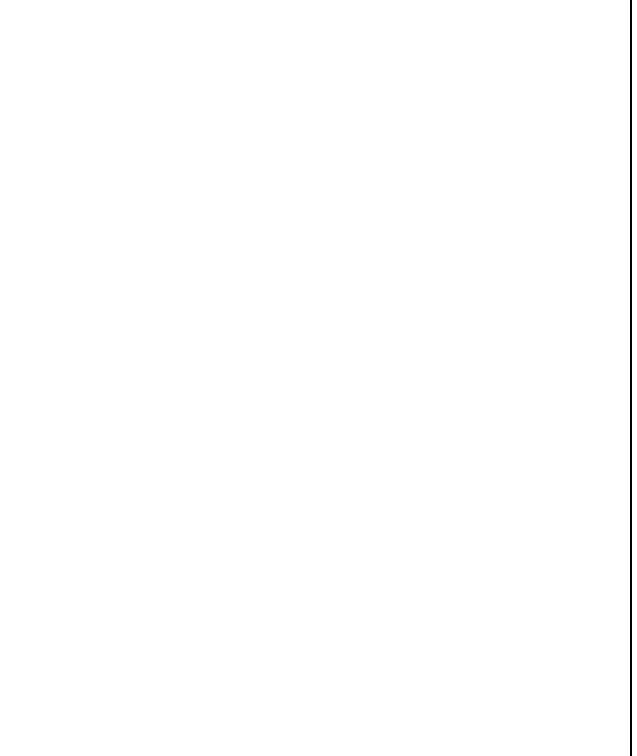
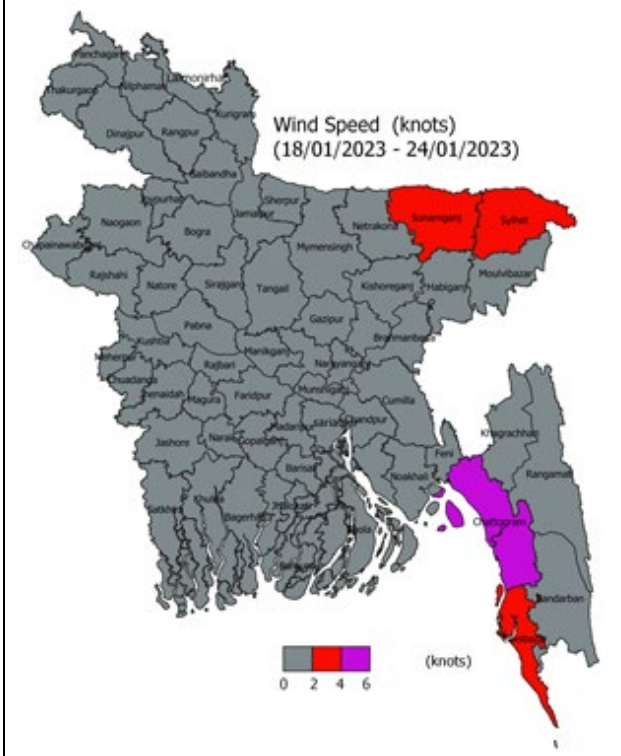
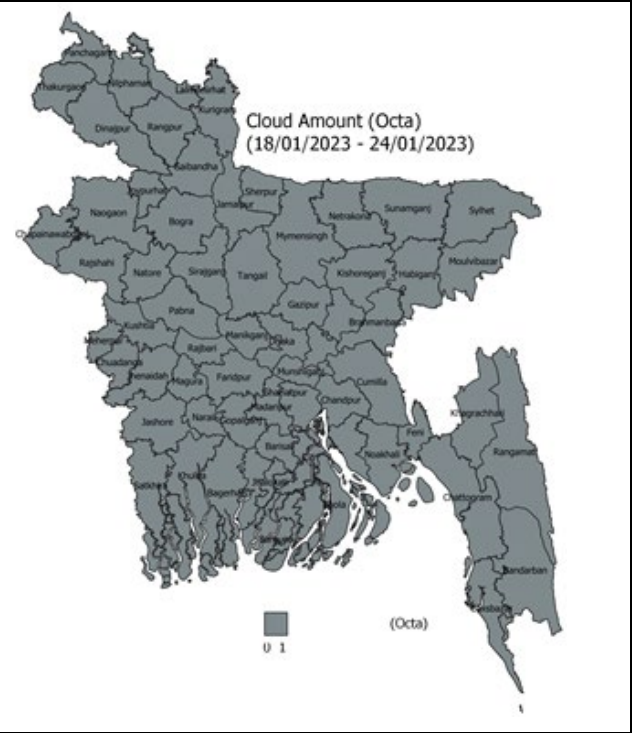
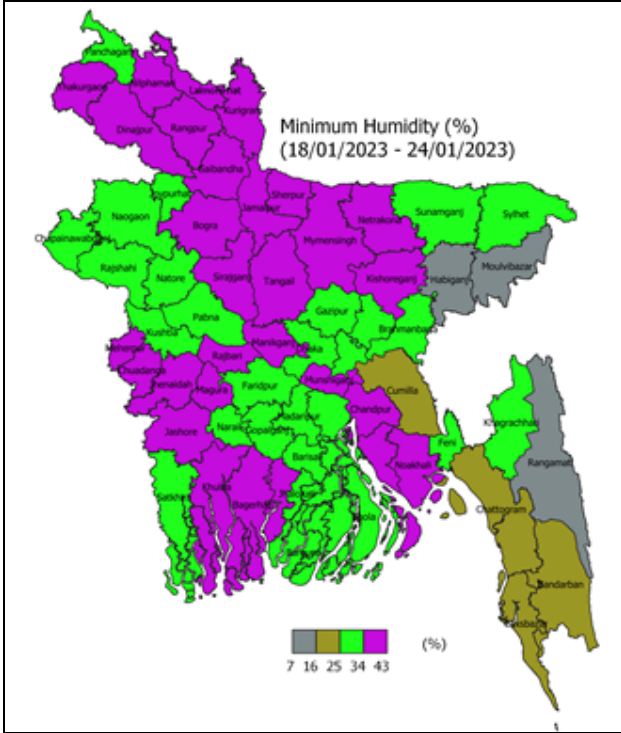
**Fog:** Light to moderate fog may occur at places over the country during late night to morning.

**Temperature:** Night temperature may rise slightly and day temperature may remain nearly unchanged over the country.

## Spatial Distribution of weather parameters for the Week ending on 25 January 2023





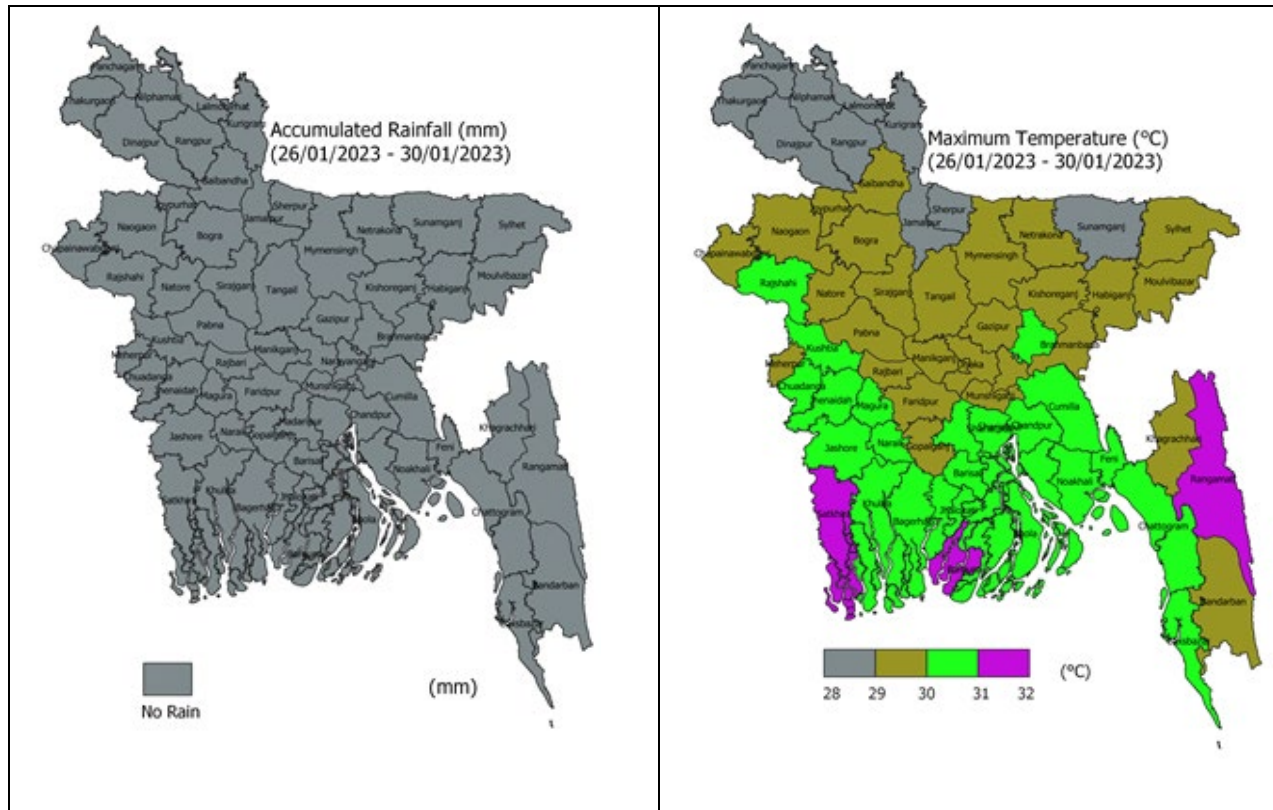


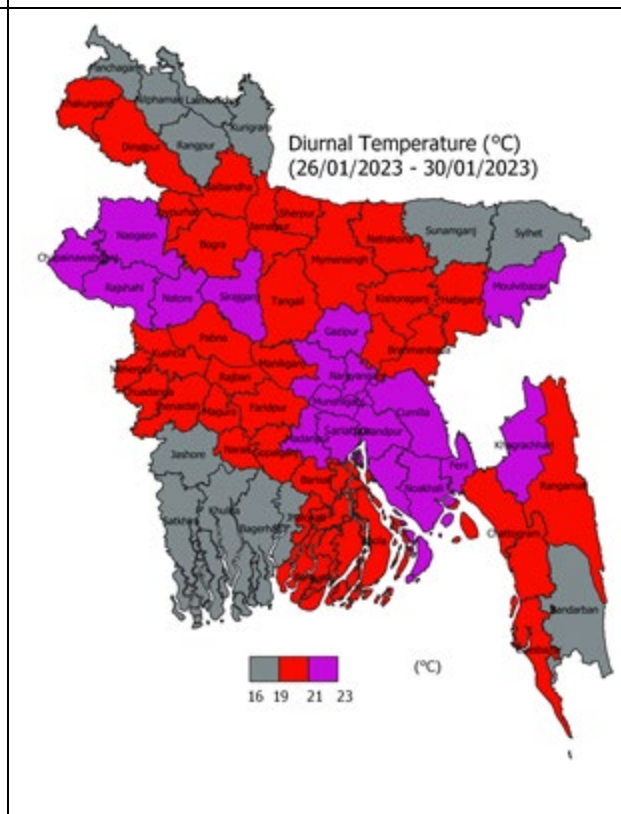
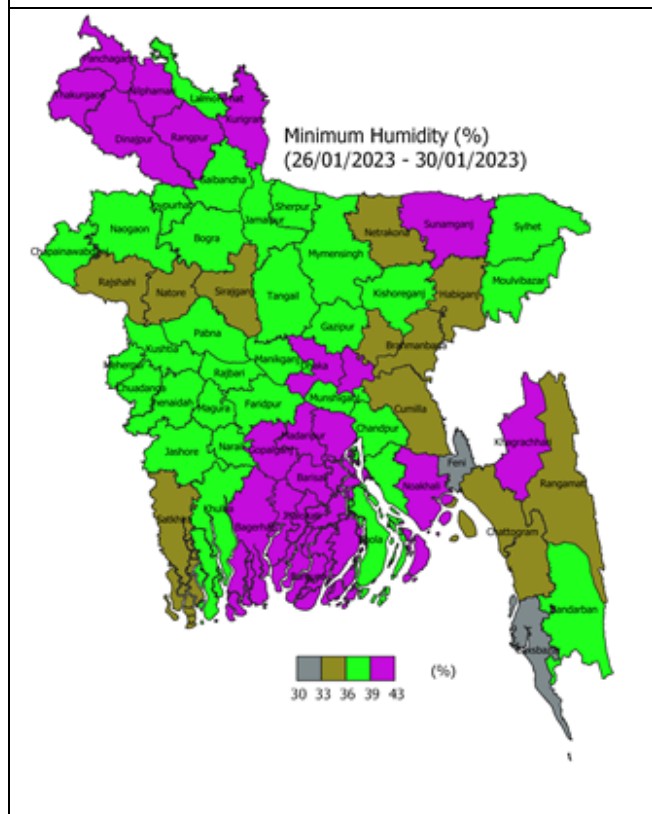
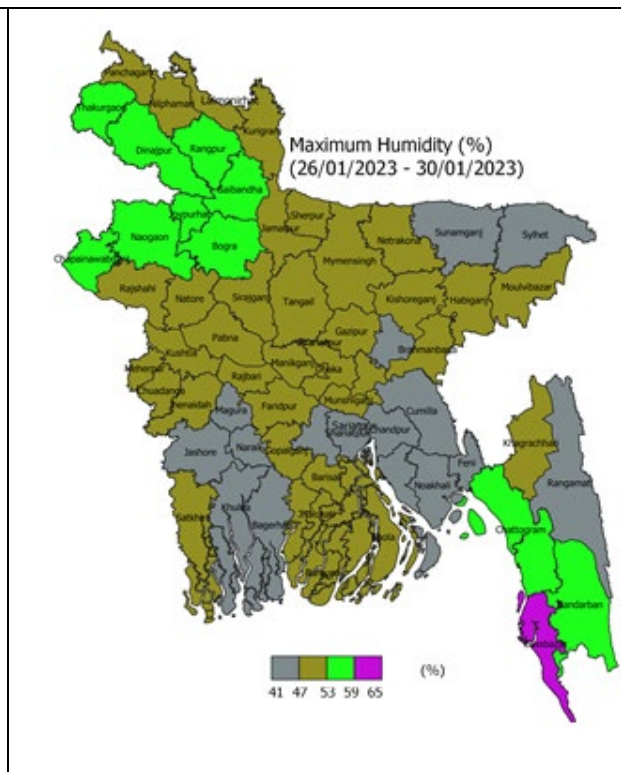
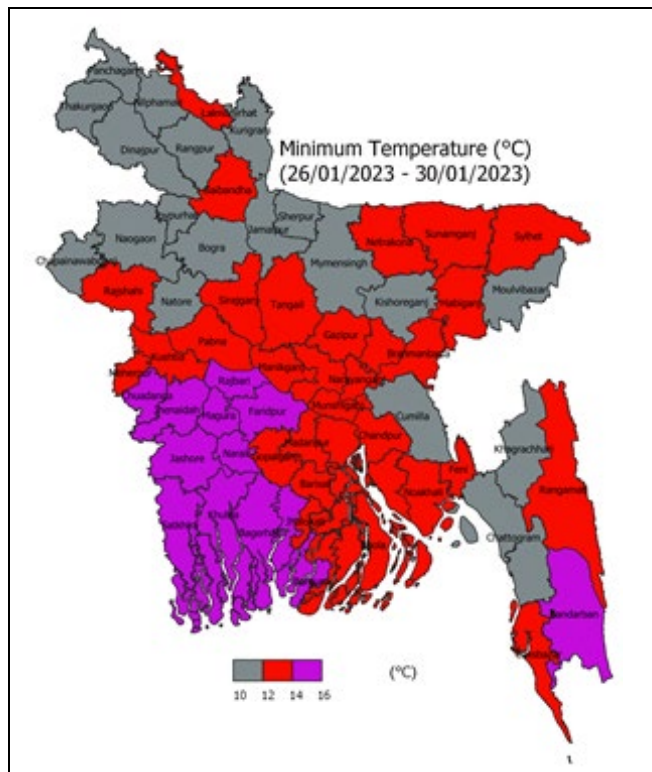
## Weather Forecast and Advisory for the Period of 22.01.2023 to 31.01.2023

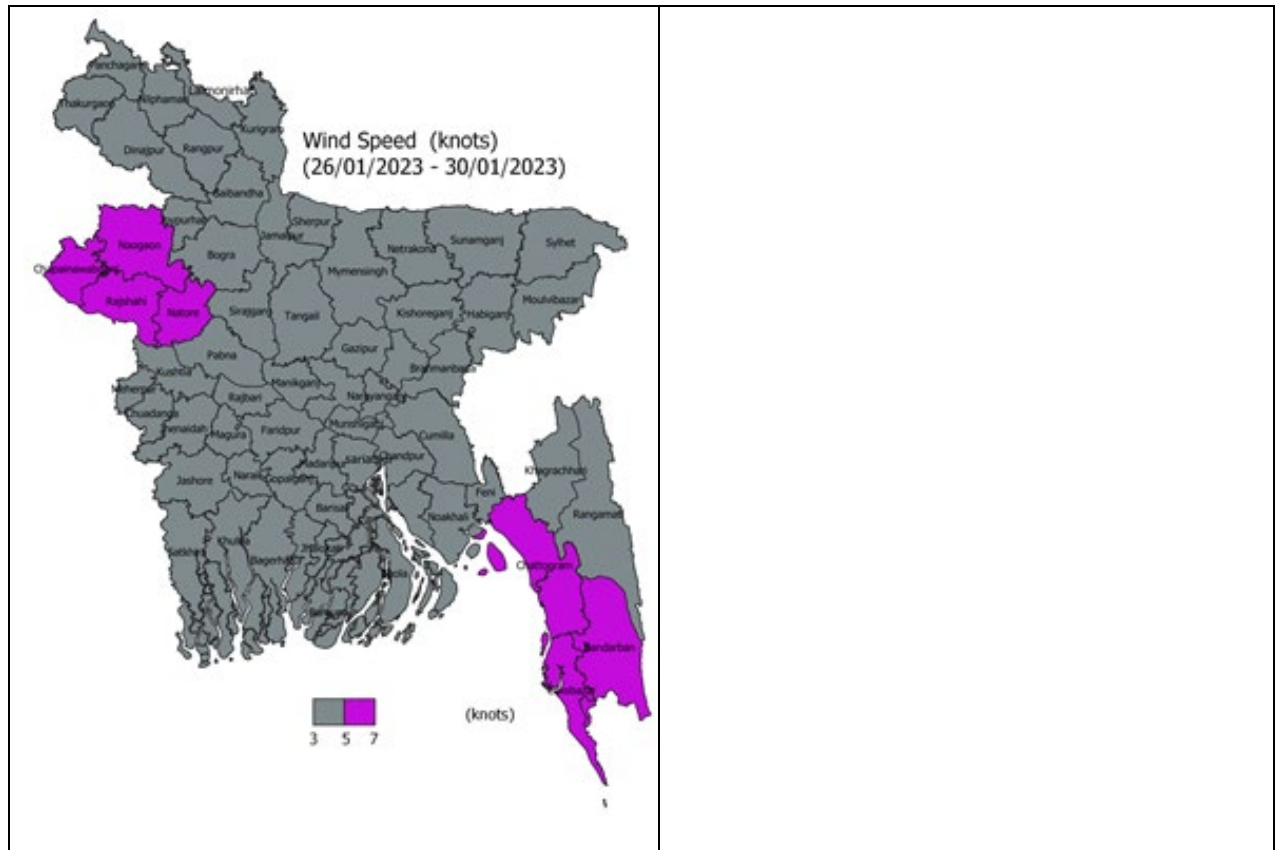
Bright sunshine hour is likely to be from 5.00 to 7.00 hours per day during this week. Average free water loss is likely to be from 2.00 to 3.00 mm per day during this week.

- Weather may remain dry with temporary partly cloudy sky over the country during this period having chances of light rain at one or two places over Rajshahi, Rangpur, Khulna, Barishal, Dhaka, Mymensingh and Sylhet divisions at the end of this period.
- Light to moderate fog may occur at places over the country during late night to morning of this period.
- Day & night temperature may rise during this period.
- Mild cold wave may sweep at one or two places over northern part of the country during this period.

### **District Wise Quantitative Weather Forecast for next Five days from 26 Jan.- 30 Jan. 2023**







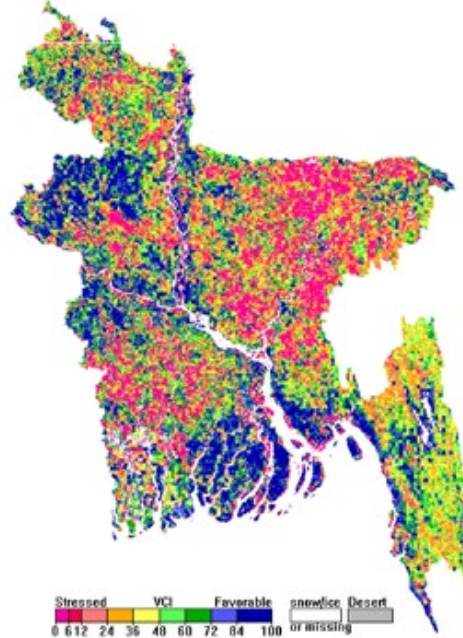


## Different Satellite Products over Bangladesh

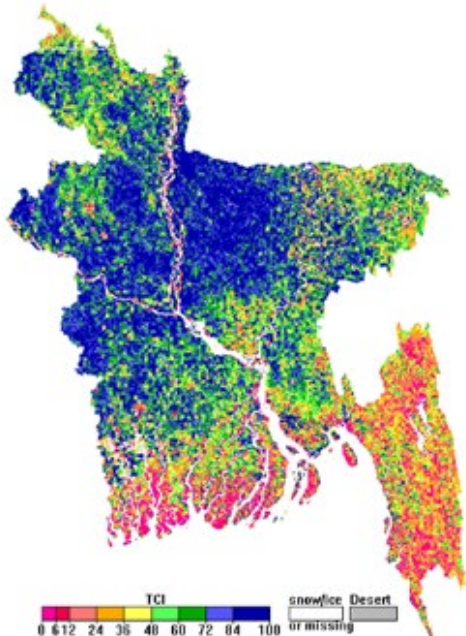
NOAA/VIIRS BLENDED NDVI composite for the week. No. 3 (15 January-21 January) over Agricultural regions of Bangladesh



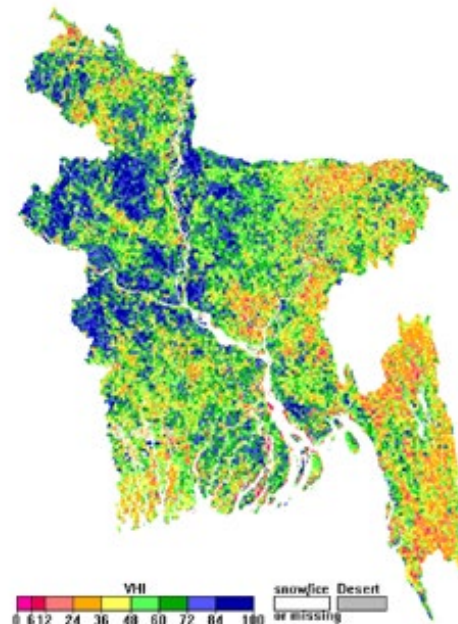
NOAA/ AVHRR BLENDED VCI composite for the week No. 3 (15 January-21 January) over Agricultural regions of Bangladesh



NOAA/ AVHRR BLENDED TCI composite for the week No. 3 (15 January-21 January) over Agricultural regions of Bangladesh



NOAA/ AVHRR BLENDED VHI composite for the week No. 3 (15 January-21 January) over Agricultural regions of Bangladesh



## Agromet Advisories

According to the medium range forecast, there is no chance of rainfall of the country in the next five days. The following agromet advisories are provided in these circumstances:

### Rajshahi Region (Districts: Rajshahi, Chapainawabganj, Naogaon and Natore)

#### Wheat

- **Stage:** Flowering
- Special monitoring of blast disease is required as there is chance of the disease due to likely incidence of fog during late night till morning. If noticed, apply Nativo 75 WG @ 6 gm/litre water to control the disease.
- At this stage of crop and prevailing weather conditions, monitoring of termite infestation is advised in late sown wheat crop. If termite infestation is observed in the crop field, spray Chlorpyrifos 20EC @ 4.0 ml/litre water in the soil at evening hours.
- There is chance of attack of leaf rust disease at this stage of crop. If noticed spray with fungicide Tilt-250EC @ 0.5ml/litre water 2-3 times at 12-15 days' interval.
- Apply irrigation.

#### Rice Boro

- **Stage:** Transplanting
- The main field should be prepared for transplanting of boro paddy with 3-4 times ploughing followed by laddering and Leveling should be done properly to retain water uniformity.
- Apply 13 kg urea (1/3 of total urea) as first basal dose and also 13 kg TSP, 20 kg MOP, 15kg gypsum and 15 kg zinc per bigha after complete preparation of field.
- In char area, 2/3 MoP(14.0 kg/bigha) to be applied with basal dose and rest 1/3 MoP with last top dress of urea.
- Seedlings of 35 to 45 days old are to be transplanted.
- Dead hills are to be replanted within 7-10 days of transplanting.
- Maintain thin a layer of water (1 - 2 cm) in the main field up to 15 days after transplanting.
- Maintain 5-7 cm land water level.
- Apply irrigation.

#### Vegetable

- Protect young plants of vegetable from low temperature.
- Present weather condition is favourable for the incidence of yellowish-brown spot in tomato, Spray mancozeb 2.5-3g/litres of water.
- Under cold conditions, there may be infestation of yellow vein mosaic in okra. Farmers are advised to remove all infected plants and destroy them. Disinfect gardening tools after

every use. Control white fly, the vector, by spraying imidacloprid 17.8 SL @ 0.5ml/ liters of water before populations reach high levels.

- Under the prevailing weather condition, monitoring is advised for infestation of fruit borers in brinjal, tomato, chilli. If infestation occurs, installation of pheromone traps @ 40 traps per acre is advised.
- Present weather is congenial for sucking pests in vegetables. To control spray Malathion 57 EC @ 1.0 ml/litre water.
- Apply Irrigation.

### **Horticultural**

- Protect young plants of horticulture crops from low temperature
- It is advised to cover the small horticulture plants with grass/polythene sheet to avoid cold paralysis
- To protect young fruit plants from chilly winds, cover young fruit plants with straw/polythene sheets/ gunny bags.
- In fruit crops, apply organic mulches after earthing up and weeding to conserve residual soil moisture as well as to maintain the soil temperature.
- Under the present weather conditions, there is a chance of an attack of pseudostem weevil to young banana plants of 3-4 months age. Spray Chlorpyrifos 2 ml/liter of water
- Weather conditions are congenial for bud rot disease in coconut; spray Bordeaux mixture 1% on spindle leaves and crown of disease affected as well as neighbouring palms.
- Apply Irrigation.

### **Mustard**

- **Stage:** Pod initiation
- Occurrence of sawfly may be seen in the mustard crops under the present environment conditions. To control this pest spray Chlorpyrifos 20 EC @ 5 ml/litre of water on fair weather.
- The present weather condition is favorable for the incidence of powdery mildew in mustard. Spray of Carbendazim 12% + Mancozeb 62% @ 2g /litre of water is advised.
- Go for intercultural operations.
- Apply light irrigation.

### **Livestock**

- Take necessary steps to prevent external parasites.
- The temperature can be increased by lighting high-wattage bulbs in cowsheds.
- Feed rich grain.
- Give anthelmintic drugs.
- Vaccinate the cattle to prevent scurvy.
- Give lukewarm water to drink.
- Feed 50-100g mineral mixture daily with feed to maintain cattle health.

### **Poultry**

- Keep the poultry shed clean and dry.
- Protect the chicken from the cold air with plastic screens or plastic bags on all sides.
- High power bulbs (100 watts or more) in the poultry shed for 1-2 hours after dusk will increase egg production and diseases will reduce.
- Take necessary measures to protect against fungal diseases.
- Let the hens out of the coop a little late in the morning and close the coop door in the evening.

### **Fishery**

- Reduce fish density, and transfer to other ponds if necessary.
- Ensure enough water in the pond to avoid the harmful effects of low temperatures.
- Reduce food in winter. Stop feeding if needed.
- Keep clean the pond water.
- Apply lime in the pond to protect fish from various bacterial diseases in winter. (250-500 gm/per decimal)

## **Rangpur Region (Districts: Rangpur, Kurigram, Gaibandha, Nilphamari, Lalmonirhat)**

### **Wheat**

- **Stage:** Maturity to Harvesting
- Start harvesting of fully matured crop.
- After harvesting, threshing & drying wheat grains should be stored at 12% level moisture.

### **Rice Boro**

- **Stage:** Tillering
- Keep the field and irrigation channel weed free. Weeding should be done before application of fertilizer and mixed the fertilizer with soil. Hand weeding or weedicides (viz. Rifit 500EC, Superhit 500 EC. etc. @ 134 ml/bigha) may be used for weed control.
- Weeding with weeder after top dressing of urea increases the activity of fertilizer.
- Apply urea 13 kg/bigha as first top dressing after 15-20 days of transplanting (4-5 tillers/hill).
- There is a chance of attack of insect/pests like, Rice stemborer, Rice hispa, etc. Constant monitoring is required for its level of incidences.
- If noticed, collect the adults using hand net & destroy them by burying under soil or by burning.
- To captivate & control the butterflies, place 2 Pheromone Traps/bigha. Also apply Carbofuran 5g @10kg / ha. or Diazinon 10g @17kg/ha. for its control.
- There is chance of Blast and brown spot attack due to light fog and raised temperature. Apply Trooper 6.0g or Nativo 6.0g/litre water twice in 10-15 days.
- Maintain 5-7 cm land water level.
- Apply irrigation.

### **Vegetable**

- Present weather condition is favourable for the incidence of yellowish-brown spot in tomato, Spray mancozeb 2.5-3g/litres of water.
- Under the prevailing weather condition, monitoring is advised for infestation of fruit borers in brinjal, tomato, chilli. If infestation occurs, installation of pheromone traps @ 40 traps per acre is advised.
- Present weather is congenial for sucking pests in vegetables. To control spray Malathion 57 EC @ 1.0 ml/litre water.
- Apply Irrigation.

### **Horticultural**

- In fruit crops, apply organic mulches after earthing up and weeding to conserve residual soil moisture as well as to maintain the soil temperature.
- Under the present weather conditions, there is a chance of an attack of pseudostem weevil to young banana plants of 3-4 months age. Spray Chlorpyrifos 2 ml/liter of water
- Weather conditions are congenial for bud rot disease in coconut; spray Bordeaux mixture 1% on spindle leaves and crown of disease affected as well as neighbouring palms.
- Apply Irrigation.

### **Mustard**

- **Stage:** Pod initiation
- Occurrence of sawfly may be seen in the mustard crops under the present environment conditions. To control this pest spray Chlorpyrifos 20 EC @ 5 ml/litre of water on fair weather.
- The present weather condition is favorable for the incidence of powdery mildew in mustard. Spray of Carbendazim 12% + Mancozeb 62% @ 2g /litre of water is advised.
- Go for intercultural operations.
- Apply light irrigation.

### **Livestock**

- Take necessary steps to prevent external parasites.
- The temperature can be increased by lighting high-wattage bulbs in cowsheds.
- Feed rich grain.
- Give anthelmintic drugs.
- Vaccinate the cattle to prevent scurvy.
- Give lukewarm water to drink.
- Feed 50-100g mineral mixture daily with feed to maintain cattle health.

### **Poultry**

- Keep the poultry shed clean and dry.
- Take necessary measures to protect against fungal diseases.
- Vaccinate Spring Disease of Chicken.

- Let the hens out of the coop a little late in the morning and close the coop door in the evening.

### **Fishery**

- Reduce fish density, and transfer to other ponds if necessary.
- Ensure enough water in the pond to avoid the harmful effects of low temperatures.
- Reduce food in winter. Stop feeding if needed.
- Keep clean the pond water.
- Apply lime in the pond to protect fish from various bacterial diseases in winter. (250-500 gm/per decimal)

## **Dinajpur Region (Districts: Dinajpur, Thakurgaon and Panchagarh)**

### **Wheat**

- **Stage:** Flowering
- Special monitoring of blast disease is required as there is chance of the disease due to likely incidence of fog during late night till morning. If noticed, apply Nativo 75 WG @ 6 gm/litre water to control the disease.
- At this stage of crop and prevailing weather conditions, monitoring of termite infestation is advised in late sown wheat crop. If termite infestation is observed in the crop field, spray Chlorpyrifos 20EC @ 4.0 ml/litre water in the soil at evening hours.
- There is chance of attack of leaf rust disease at this stage of crop. If noticed spray with fungicide Tilt-250EC @ 0.5ml/litre water 2-3 times at 12-15 days' interval.
- Apply irrigation.

### **Rice Boro**

- **Stage:** Tillering
- Keep the field and irrigation channel weed free. Weeding should be done before application of fertilizer and mixed the fertilizer with soil. Hand weeding or weedicides (viz. Rifit 500EC, Superhit 500 EC. etc. @ 134 ml/bigha) may be used for weed control.
- Weeding with weeder after top dressing of urea increases the activity of fertilizer.
- Apply urea 13 kg/bigha as first top dressing after 15-20 days of transplanting (4-5 tillers/hill).
- There is a chance of attack of insect/pests like, Rice stemborer, Rice hispa, etc. Constant monitoring is required for its level of incidences.
- If noticed, collect the adults using hand net & destroy them by burying under soil or by burning.
- To captivate & control the butterflies, place 2 Pheromone Traps/bigha. Also apply Carbofuran 5g @10kg / ha. or Diazinon 10g @17kg/ha. for its control.
- There is chance of Blast and brown spot attack due to light fog and raised temperature. Apply Trooper 6.0g or Nativo 6.0g/litre water twice in 10-15 days.
- Maintain 5-7 cm land water level.

- Apply irrigation.

### **Vegetable**

- Protect young plants of vegetable from low temperature.
- Present weather condition is favourable for the incidence of yellowish-brown spot in tomato, Spray mancozeb 2.5-3g/litres of water.
- Under cold conditions, there may be infestation of yellow vein mosaic in okra. Farmers are advised to remove all infected plants and destroy them. Disinfect gardening tools after every use. Control white fly, the vector, by spraying imidacloprid 17.8 SL @ 0.5ml/ liters of water before populations reach high levels.
- Under the prevailing weather condition, monitoring is advised for infestation of fruit borers in brinjal, tomato, chilli. If infestation occurs, installation of pheromone traps @ 40 traps per acre is advised.
- Present weather is congenial for sucking pests in vegetables. To control spray Malathion 57 EC @ 1.0 ml/litre water.
- Apply Irrigation.

### **Horticultural**

- Protect young plants of horticulture crops from low temperature
- It is advised to cover the small horticulture plants with grass/polythene sheet to avoid cold paralysis
- To protect young fruit plants from chilly winds, cover young fruit plants with straw/polythene sheets/ gunny bags.
- In fruit crops, apply organic mulches after earthing up and weeding to conserve residual soil moisture as well as to maintain the soil temperature.
- Under the present weather conditions, there is a chance of an attack of pseudostem weevil to young banana plants of 3-4 months age. Spray Chlorpyrifos 2 ml/liter of water
- Weather conditions are congenial for bud rot disease in coconut; spray Bordeaux mixture 1% on spindle leaves and crown of disease affected as well as neighbouring palms.
- Due to high relative humidity, sooty mould disease may occur in mangoes. To control Pruning of affected branches and wash off the tree with soapy water is advised. In case of severe infestation Spray with Mancozeb @ 0.2% + Clorpyrifos 20EC 2ml/l at 10-15 days interval.
- Apply Irrigation.

### **Mustard**

- **Stage:** Pod initiation
- Occurrence of sawfly may be seen in the mustard crops under the present environment conditions. To control this pest spray Chlorpyrifos 20 EC @ 5 ml/litre of water on fair weather.
- The present weather condition is favorable for the incidence of powdery mildew in mustard. Spray of Carbendazim 12% + Mancozeb 62% @ 2g /litre of water is advised.
- Go for intercultural operations.

- Apply light irrigation.

### **Livestock**

- Take necessary steps to prevent external parasites.
- The temperature can be increased by lighting high-wattage bulbs in cowsheds.
- Feed rich grain.
- Give anthelmintic drugs.
- Vaccinate the cattle to prevent scurvy.
- Give lukewarm water to drink.
- Feed 50-100g mineral mixture daily with feed to maintain cattle health.
- Night temperature is decreasing. So keep the cattle under the shed.

### **Poultry**

- Keep the poultry shed clean and dry.
- Protect the chicken from the cold air with plastic screens or plastic bags on all sides.
- High power bulbs (100 watts or more) in the poultry shed for 1-2 hours after dusk will increase egg production and diseases will reduce.
- Take necessary measures to protect against fungal diseases.
- Vaccinate Spring Disease of Chicken.
- Let the hens out of the coop a little late in the morning and close the coop door in the evening.

### **Fishery**

- Reduce fish density, and transfer to other ponds if necessary.
- Ensure enough water in the pond to avoid the harmful effects of low temperatures.
- Reduce food in winter. Stop feeding if needed.
- Keep clean the pond water.
- Apply lime in the pond to protect fish from various bacterial diseases in winter. (250-500 gm/per decimal)

## **Bogura Region (Districts: Bogura, Joypurhat, Pabna, Sirajganj)**

### **Wheat**

- **Stage:** Flowering
- Special monitoring of blast disease is required as there is chance of the disease due to likely incidence of fog during late night till morning. If noticed, apply Nativo 75 WG @ 6 gm/litre water to control the disease.
- At this stage of crop and prevailing weather conditions, monitoring of termite infestation is advised in late sown wheat crop. If termite infestation is observed in the crop field, spray Chlorpyrifos 20EC @ 4.0 ml/litre water in the soil at evening hours.
- There is chance of attack of leaf rust disease at this stage of crop. If noticed spray with fungicide Tilt-250EC @ 0.5ml/litre water 2-3 times at 12-15 days' interval.



- Apply irrigation.

### **Rice Boro**

- **Stage:** Transplanting
- The main field should be prepared for transplanting of boro paddy with 3-4 times ploughing followed by laddering and Leveling should be done properly to retain water uniformity.
- Apply 13 kg urea (1/3 of total urea) as first basal dose and also 13 kg TSP, 20 kg MOP, 15kg gypsum and 15 kg zinc per bigha after complete preparation of field.
- In char area, 2/3 MoP(14.0 kg/bigha) to be applied with basal dose and rest 1/3 MoP with last top dress of urea.
- Seedlings of 35 to 45 days old are to be transplanted.
- Dead hills are to be replanted within 7-10 days of transplanting.
- Maintain thin a layer of water (1 - 2 cm) in the main field up to 15 days after transplanting.
- Maintain 1-2 cm land water level.
- Apply irrigation.

### **Vegetable**

- Protect young plants of vegetable from low temperature.
- Present weather condition is favourable for the incidence of yellowish-brown spot in tomato, Spray mancozeb 2.5-3g/litres of water.
- Under cold conditions, there may be infestation of yellow vein mosaic in okra. Farmers are advised to remove all infected plants and destroy them. Disinfect gardening tools after every use. Control white fly, the vector, by spraying imidacloprid 17.8 SL @ 0.5ml/ liters of water before populations reach high levels.
- Under the prevailing weather condition, monitoring is advised for infestation of fruit borers in brinjal, tomato, chilli. If infestation occurs, installation of pheromone traps @ 40 traps per acre is advised.
- Present weather is congenial for sucking pests in vegetables. To control spray Malathion 57 EC @ 1.0 ml/litre water.
- Apply Irrigation.

### **Horticultural**

- Protect young plants of horticulture crops from low temperature
- It is advised to cover the small horticulture plants with grass/polythene sheet to avoid cold paralysis
- To protect young fruit plants from chilly winds, cover young fruit plants with straw/polythene sheets/ gunny bags.
- In fruit crops, apply organic mulches after earthing up and weeding to conserve residual soil moisture as well as to maintain the soil temperature.
- Under the present weather conditions, there is a chance of an attack of pseudostem weevil to young banana plants of 3-4 months age. Spray Chlorpyrifos 2 ml/liter of water

- Weather conditions are congenial for bud rot disease in coconut; spray Bordeaux mixture 1% on spindle leaves and crown of disease affected as well as neighbouring palms.
- Apply Irrigation.

### **Mustard**

- **Stage:** Pod initiation
- Occurrence of sawfly may be seen in the mustard crops under the present environment conditions. To control this pest spray Chlorpyrifos 20 EC @ 5 ml/litre of water on fair weather.
- The present weather condition is favorable for the incidence of powdery mildew in mustard. Spray of Carbendazim 12% + Mancozeb 62% @ 2g /litre of water is advised.
- Go for intercultural operations.
- Apply light irrigation.

### **Livestock**

- Take necessary steps to prevent external parasites.
- The temperature can be increased by lighting high-wattage bulbs in cowsheds.
- Feed rich grain.
- Give anthelmintic drugs.
- Vaccinate the cattle to prevent scurvy.
- Give lukewarm water to drink.
- Feed 50-100g mineral mixture daily with feed to maintain cattle health.

### **Poultry**

- Keep the poultry shed clean and dry.
- Protect the chicken from the cold air with plastic screens or plastic bags on all sides.
- High power bulbs (100 watts or more) in the poultry shed for 1-2 hours after dusk will increase egg production and diseases will reduce.
- Take necessary measures to protect against fungal diseases.
- Vaccinate Spring Disease of Chicken.
- Let the hens out of the coop a little late in the morning and close the coop door in the evening.

### **Fishery**

- Reduce fish density, and transfer to other ponds if necessary.
- Ensure enough water in the pond to avoid the harmful effects of low temperatures.
- Reduce food in winter. Stop feeding if needed.
- Keep clean the pond water.
- Apply lime in the pond to protect fish from various bacterial diseases in winter. (250-500 gm/per decimal)

**Sylhet Region (Districts: Sylhet, Moulvibazar, Sunamganj, Habiganj)**

## Wheat

- **Stage:** Flowering
- Special monitoring of blast disease is required as there is chance of the disease due to likely incidence of fog during late night till morning. If noticed, apply Nativo 75 WG @ 6 gm/litre water to control the disease.
- At this stage of crop and prevailing weather conditions, monitoring of termite infestation is advised in late sown wheat crop. If termite infestation is observed in the crop field, spray Chlorpyrifos 20EC @ 4.0 ml/litre water in the soil at evening hours.
- There is chance of attack of leaf rust disease at this stage of crop. If noticed spray with fungicide Tilt-250EC @ 0.5ml/litre water 2-3 times at 12-15 days' interval.
- Apply irrigation.

## Rice Boro

- **Stage:** Heading
- Arrange proper solarisation within the row by stirring the plants after each 2 rows.
- Where seedlings are 90-110 days old apply last top dressing with urea and potash.
- There is a chance of attack of insect/pests like, Rice Stem borer, Rice hispa, etc. Constant monitoring is required for its level of incidences. If noticed, collect the adults using hand net & destroy them by burying under soil or by burning. Also apply Carbofuran 5g @10kg / ha. or Diazinon 10g @17kg/ha. for its control.
- There is chance of Blast and brown spot attack due to light fog and raised temperature. . Apply Trooper 6.0g or Nativo 6.0g/litre water twice in 10-15 days.
- Keep the field and irrigation channel weed free.
- Maintain 2-5 cm land water level.
- Apply irrigation.

## Vegetable

- Present weather condition is favourable for the incidence of yellowish-brown spot in tomato, Spray mancozeb 2.5-3g/litres of water.
- Under the prevailing weather condition, monitoring is advised for infestation of fruit borers in brinjal, tomato, chilli. If infestation occurs, installation of pheromone traps @ 40 traps per acre is advised.
- Present weather is congenial for sucking pests in vegetables.To control spray Malathion 57 EC @ 1.0 ml/litre water.
- Apply Irrigation.

## Horticultural

- In fruit crops, apply organic mulches after earthing up and weeding to conserve residual soil moisture as well as to maintain the soil temperature.
- Under the present weather conditions, there is a chance of an attack of pseudostem weevil to young banana plants of 3-4 months age. Spray Chlorpyrifos 2 ml/liter of water

- Weather conditions are congenial for bud rot disease in coconut; spray Bordeaux mixture 1% on spindle leaves and crown of disease affected as well as neighbouring palms.
- Apply Irrigation.

### **Livestock**

- Take necessary steps to prevent external parasites.
- The temperature can be increased by lighting high-wattage bulbs in cowsheds.
- Feed rich grain.
- Give anthelmintic drugs.
- Vaccinate the cattle to prevent scurvy.
- Give lukewarm water to drink.
- Feed 50-100g mineral mixture daily with feed to maintain cattle health.

### **Poultry**

- Keep the poultry shed clean and dry.
- Take necessary measures to protect against fungal diseases.
- Vaccinate Spring Disease of Chicken.
- Let the hens out of the coop a little late in the morning and close the coop door in the evening.

### **Fishery**

- Reduce fish density, and transfer to other ponds if necessary.
- Ensure enough water in the pond to avoid the harmful effects of low temperatures.
- Reduce food in winter. Stop feeding if needed.
- Keep clean the pond water.
- Apply lime in the pond to protect fish from various bacterial diseases in winter. (250-500 gm/per decimal)

## **Rangamati Region (Districts: Rangamati, Khagrachari and Bandarban)**

### **Rice Boro**

- **Stage:** Tillering
- Keep the field and irrigation channel weed free. Weeding should be done before application of fertilizer and mixed the fertilizer with soil. Hand weeding or weedicides (viz. Rifit 500EC, Superhit 500 EC. etc. @ 134 ml/bigha) may be used for weed control.
- Weeding with weeder after top dressing of urea increases the activity of fertilizer.
- Apply urea 13 kg/bigha as first top dressing after 15-20 days of transplanting (4-5 tillers/hill).
- There is a chance of attack of insect/pests like, Rice stemborer, Rice hispa, etc. Constant monitoring is required for its level of incidences.
- If noticed, collect the adults using hand net & destroy them by burying under soil or by burning.

- To captivate & control the butterflies, place 2 Pheromone Traps/bigha. Also apply Carbofuran 5g @10kg / ha. or Diazinon 10g @17kg/ha. for its control.
- There is chance of Blast and brown spot attack due to light fog and raised temperature. Apply Trooper 6.0g or Nativo 6.0g/litre water twice in 10-15 days.
- Maintain 5-7 cm land water level.
- Apply irrigation.

### **Vegetable**

- Present weather condition is favourable for the incidence of yellowish-brown spot in tomato, Spray mancozeb 2.5-3g/litres of water.
- Under the prevailing weather condition, monitoring is advised for infestation of fruit borers in brinjal, tomato, chilli. If infestation occurs, installation of pheromone traps @ 40 traps per acre is advised.
- Present weather is congenial for sucking pests in vegetables. To control spray Malathion 57 EC @ 1.0 ml/litre water.
- Apply Irrigation.

### **Horticultural**

- In fruit crops, apply organic mulches after earthing up and weeding to conserve residual soil moisture as well as to maintain the soil temperature.
- Under the present weather conditions, there is a chance of an attack of pseudostem weevil to young banana plants of 3-4 months' age. Spray Chlorpyrifos 2 ml/liter of water
- Weather conditions are congenial for bud rot disease in coconut; spray Bordeaux mixture 1% on spindle leaves and crown of disease affected as well as neighbouring palms.
- Apply Irrigation.

### **Mustard**

- **Stage:** Pod initiation
- Occurrence of sawfly may be seen in the mustard crops under the present environment conditions. To control this pest spray Chlorpyrifos 20 EC @ 5 ml/litre of water on fair weather.
- The present weather condition is favorable for the incidence of powdery mildew in mustard. Spray of Carbendazim 12% + Mancozeb 62% @ 2g /litre of water is advised.
- Go for intercultural operations.
- Apply light irrigation.

### **Livestock**

- Take necessary steps to prevent external parasites.
- The temperature can be increased by lighting high-wattage bulbs in cowsheds.
- Feed rich grain.
- Give anthelmintic drugs.
- Vaccinate the cattle to prevent scurvy.

- Give lukewarm water to drink.
- Feed 50-100g mineral mixture daily with feed to maintain cattle health.

### **Poultry**

- Keep the poultry shed clean and dry.
- Take necessary measures to protect against fungal diseases.
- Vaccinate Spring Disease of Chicken.
- Let the hens out of the coop a little late in the morning and close the coop door in the evening.

### **Fishery**

- Reduce fish density, and transfer to other ponds if necessary.
- Ensure enough water in the pond to avoid the harmful effects of low temperatures.
- Reduce food in winter. Stop feeding if needed.
- Keep clean the pond water.
- Apply lime in the pond to protect fish from various bacterial diseases in winter. (250-500 gm/per decimal)

## **Barishal Region (Districts: Jhalakati, Patuakhali, Pirujpur, Barguna, Barishal, Bhola)**

### **Wheat**

- **Stage:** Flowering
- Special monitoring of blast disease is required as there is chance of the disease due to likely incidence of fog during late night till morning. If noticed, apply Nativo 75 WG @ 6 gm/litre water to control the disease.
- At this stage of crop and prevailing weather conditions, monitoring of termite infestation is advised in late sown wheat crop. If termite infestation is observed in the crop field, spray Chlorpyrifos 20EC @ 4.0 ml/litre water in the soil at evening hours.
- There is chance of attack of leaf rust disease at this stage of crop. If noticed spray with fungicide Tilt-250EC @ 0.5ml/litre water 2-3 times at 12-15 days' interval.
- Apply irrigation.

### **Rice Boro**

- **Stage:** Tillering
- Keep the field and irrigation channel weed free. Weeding should be done before application of fertilizer and mixed the fertilizer with soil. Hand weeding or weedicides (viz. Rifit 500EC, Superhit 500 EC. etc. @ 134 ml/bigha) may be used for weed control.
- Weeding with weeder after top dressing of urea increases the activity of fertilizer.
- Apply urea 13 kg/bigha as first top dressing after 15-20 days of transplanting (4-5 tillers/hill).

- There is a chance of attack of insect/pests like, Rice stemborer, Rice hispa, etc. Constant monitoring is required for its level of incidences.
- If noticed, collect the adults using hand net & destroy them by burying under soil or by burning.
- To captivate & control the butterflies, place 2 Pheromone Traps/bigha. Also apply Carbofuran 5g @10kg / ha. or Diazinon 10g @17kg/ha. for its control.
- There is chance of Blast and brown spot attack due to light fog and raised temperature. Apply Trooper 6.0g or Nativo 6.0g/litre water twice in 10-15 days.
- Maintain 5-7 cm land water level.
- Apply irrigation.

### **Vegetable**

- Present weather condition is favourable for the incidence of yellowish-brown spot in tomato, Spray mancozeb 2.5-3g/litres of water.
- Under the prevailing weather condition, monitoring is advised for infestation of fruit borers in brinjal, tomato, chilli. If infestation occurs, installation of pheromone traps @ 40 traps per acre is advised.
- Present weather is congenial for sucking pests in vegetables. To control spray Malathion 57 EC @ 1.0 ml/litre water.
- Apply Irrigation.

### **Horticultural**

- In fruit crops, apply organic mulches after earthing up and weeding to conserve residual soil moisture as well as to maintain the soil temperature.
- Under the present weather conditions, there is a chance of an attack of pseudostem weevil to young banana plants of 3-4 months age. Spray Chlorpyrifos 2 ml/liter of water
- Weather conditions are congenial for bud rot disease in coconut; spray Bordeaux mixture 1% on spindle leaves and crown of disease affected as well as neighbouring palms.
- Apply Irrigation.

### **Mustard**

- **Stage:** Flowering
- Advice for weeding in mustard fields.

### **Livestock**

- Take necessary steps to prevent external parasites.
- The temperature can be increased by lighting high-wattage bulbs in cowsheds.
- Feed rich grain.
- Give anthelmintic drugs.
- Vaccinate the cattle to prevent scurvy.
- Give lukewarm water to drink.
- Feed 50-100g mineral mixture daily with feed to maintain cattle health.

## Poultry

- Keep the poultry shed clean and dry.
- Take necessary measures to protect against fungal diseases.
- Vaccinate Spring Disease of Chicken.
- Let the hens out of the coop a little late in the morning and close the coop door in the evening.

## Fishery

- Reduce fish density, and transfer to other ponds if necessary.
- Ensure enough water in the pond to avoid the harmful effects of low temperatures.
- Reduce food in winter. Stop feeding if needed.
- Keep clean the pond water.
- Apply lime in the pond to protect fish from various bacterial diseases in winter. (250-500 gm/per decimal)

## Jashore Region (Districts: Jashore, Kushtia, Chuadanga, Jhenaidah, Meherpur, Magura)

## Wheat

- **Stage:** Flowering
- Special monitoring of blast disease is required as there is chance of the disease due to likely incidence of fog during late night till morning. If noticed, apply Nativo 75 WG @ 6 gm/litre water to control the disease.
- At this stage of crop and prevailing weather conditions, monitoring of termite infestation is advised in late sown wheat crop. If termite infestation is observed in the crop field, spray Chlorpyrifos 20EC @ 4.0 ml/litre water in the soil at evening hours.
- There is chance of attack of leaf rust disease at this stage of crop. If noticed spray with fungicide Tilt-250EC @ 0.5ml/litre water 2-3 times at 12-15 days' interval.
- Apply irrigation.

## Rice Boro

- **Stage:** Seedbed
- Take appropriate action for preparation of seedbed for boro paddy. Prepare the seedbed in high land and also make arrangements for draining out of water and also advised for community based seedbed preparation.
- Construct 40-50 cm. drain in between two seedbeds. This will be used for draining out extra water, irrigation also apply fertilizer/insecticide as and when necessary.
- Advise to use recommended varieties of seed.
- If required, provide proper treatment of seeds so that there will be less chance of diseases.
- Close monitoring is required so that birds should not take away the seed from the seed bed.



- After 4-5 days of seed germination, it is better to maintain water level 2-3 cm in seed bed so that it can control the weeds and seed damages due to birds.
- If the seedbed becomes yellow, apply urea at the rate of 283 gm per decimal. Apply 400 gm gypsum per decimal if the seedlings are still not recovered after application of urea.

### **Vegetable**

- Present weather condition is favourable for the incidence of yellowish-brown spot in tomato, Spray mancozeb 2.5-3g/litres of water.
- Under the prevailing weather condition, monitoring is advised for infestation of fruit borers in brinjal, tomato, chilli. If infestation occurs, installation of pheromone traps @ 40 traps per acre is advised.
- Present weather is congenial for sucking pests in vegetables. To control spray Malathion 57 EC @ 1.0 ml/litre water.
- Apply Irrigation.

### **Horticultural**

- In fruit crops, apply organic mulches after earthing up and weeding to conserve residual soil moisture as well as to maintain the soil temperature.
- Under the present weather conditions, there is a chance of an attack of pseudostem weevil to young banana plants of 3-4 months age. Spray Chlorpyrifos 2 ml/liter of water
- Weather conditions are congenial for bud rot disease in coconut; spray Bordeaux mixture 1% on spindle leaves and crown of disease affected as well as neighbouring palms.
- Apply Irrigation.

### **Mustard**

- **Stage:** Pod initiation
- Occurrence of sawfly may be seen in the mustard crops under the present environment conditions. To control this pest spray Chlorpyrifos 20 EC @ 5 ml/litre of water on fair weather.
- The present weather condition is favorable for the incidence of powdery mildew in mustard. Spray of Carbendazim 12% + Mancozeb 62% @ 2g /litre of water is advised.
- Go for intercultural operations.
- Apply light irrigation.

### **Livestock**

- Take necessary steps to prevent external parasites.
- The temperature can be increased by lighting high-wattage bulbs in cowsheds.
- Feed rich grain.
- Give anthelmintic drugs.
- Vaccinate the cattle to prevent scurvy.
- Give lukewarm water to drink.
- Feed 50-100g mineral mixture daily with feed to maintain cattle health.

## Poultry

- Keep the poultry shed clean and dry.
- Take necessary measures to protect against fungal diseases.
- Vaccinate Spring Disease of Chicken.
- Let the hens out of the coop a little late in the morning and close the coop door in the evening.

## Fishery

- Reduce fish density, and transfer to other ponds if necessary.
- Ensure enough water in the pond to avoid the harmful effects of low temperatures.
- Reduce food in winter. Stop feeding if needed.
- Keep clean the pond water.
- Apply lime in the pond to protect fish from various bacterial diseases in winter. (250-500 gm/per decimal)

## Faridpur Region (Districts: Faridpur, Rajbari, Madaripur, Shariatpur and Gopalganj)

## Wheat

- **Stage:** Grain Formation
- Special monitoring of blast disease is required as there is chance of the disease due to likely incidence of fog during late night till morning. If noticed, apply Nativo 75 WG 6 gm/decimal to control the disease.
- During the stage, farmers are advised to 3rd time irrigation at wheat field for good yield.
- At this stage of crop and prevailing weather conditions, monitoring of termite infestation is advised in late sown wheat crop. If termite infestation is observed in the crop field, apply Chlorpyrifos 20EC @ 4.0 ml/litre in the soil at evening hours.
- Apply irrigation.

## Rice Boro

- **Stage:** Heading
- Arrange proper solarisation within the row by stirring the plants after each 2 rows.
- Where seedlings are 90-110 days old apply last top dressing with urea and potash.
- There is a chance of attack of insect/pests like, Rice Stem borer, Rice hispa, etc. Constant monitoring is required for its level of incidences. If noticed, collect the adults using hand net & destroy them by burying under soil or by burning. Also apply Carbofuran 5g @10kg / ha. or Diazinon 10g @17kg/ha. for its control.
- There is chance of Blast and brown spot attack due to light fog and raised temperature. . Apply Trooper 6.0g or Nativo 6.0g/litre water twice in 10-15 days.
- Keep the field and irrigation channel weed free.
- Maintain 2-5 cm land water level.
- Apply irrigation.

## **Vegetable**

- Present weather condition is favourable for the incidence of yellowish-brown spot in tomato, Spray mancozeb 2.5-3g/litres of water.
- Under the prevailing weather condition, monitoring is advised for infestation of fruit borers in brinjal, tomato, chilli. If infestation occurs, installation of pheromone traps @ 40 traps per acre is advised.
- Present weather is congenial for sucking pests in vegetables. To control spray Malathion 57 EC @ 1.0 ml/litre water.
- Apply Irrigation.

## **Horticultural**

- In fruit crops, apply organic mulches after earthing up and weeding to conserve residual soil moisture as well as to maintain the soil temperature.
- Under the present weather conditions, there is a chance of an attack of pseudostem weevil to young banana plants of 3-4 months age. Spray Chlorpyrifos 2 ml/liter of water
- Weather conditions are congenial for bud rot disease in coconut; spray Bordeaux mixture 1% on spindle leaves and crown of disease affected as well as neighbouring palms.
- Apply Irrigation.

## **Livestock**

- Take necessary steps to prevent external parasites.
- The temperature can be increased by lighting high-wattage bulbs in cowsheds.
- Feed rich grain.
- Give anthelmintic drugs.
- Vaccinate the cattle to prevent scurvy.
- Give lukewarm water to drink.
- Feed 50-100g mineral mixture daily with feed to maintain cattle health.

## **Poultry**

- Keep the poultry shed clean and dry.
- Take necessary measures to protect against fungal diseases.
- Vaccinate Spring Disease of Chicken.
- Let the hens out of the coop a little late in the morning and close the coop door in the evening.

## **Fishery**

- Reduce fish density, and transfer to other ponds if necessary.
- Ensure enough water in the pond to avoid the harmful effects of low temperatures.
- Reduce food in winter. Stop feeding if needed.
- Keep clean the pond water.

- Apply lime in the pond to protect fish from various bacterial diseases in winter. (250-500 gm/per decimal)

### **Dhaka Region (Districts: Dhaka, Tangail, Gazipur, Narsingdi, Narayanganj, Munshiganj, Manikgonj)**

#### **Wheat**

- **Stage:** Grain Formation
- Special monitoring of blast disease is required as there is chance of the disease due to likely incidence of fog during late night till morning. If noticed, apply Nativo 75 WG 6 gm/decimal to control the disease.
- During the stage, farmers are advised to 3rd time irrigation at wheat field for good yield.
- At this stage of crop and prevailing weather conditions, monitoring of termite infestation is advised in late sown wheat crop. If termite infestation is observed in the crop field, apply Chlorpyrifos 20EC @ 4.0 ml/litre in the soil at evening hours.
- Apply irrigation.

#### **Rice Boro**

- **Stage:** Heading
- Arrange proper solarisation within the row by stirring the plants after each 2 rows.
- Where seedlings are 90-110 days old apply last top dressing with urea and potash.
- There is a chance of attack of insect/pests like, Rice Stem borer, Rice hispa, etc. Constant monitoring is required for its level of incidences. If noticed, collect the adults using hand net & destroy them by burying under soil or by burning. Also apply Carbofuran 5g @10kg / ha. or Diazinon 10g @17kg/ha. for its control.
- There is chance of Blast and brown spot attack due to light fog and raised temperature. . Apply Trooper 6.0g or Nativo 6.0g/litre water twice in 10-15 days.
- Keep the field and irrigation channel weed free.
- Maintain 2-5 cm land water level.
- Apply irrigation.

#### **Vegetable**

- Protect young plants of vegetable from low temperature.
- Present weather condition is favourable for the incidence of yellowish-brown spot in tomato, Spray mancozeb 2.5-3g/litres of water.
- Under cold conditions, there may be infestation of yellow vein mosaic in okra. Farmers are advised to remove all infected plants and destroy them. Disinfect gardening tools after every use. Control white fly, the vector, by spraying imidacloprid 17.8 SL @ 0.5ml/ liters of water before populations reach high levels.

- Under the prevailing weather condition, monitoring is advised for infestation of fruit borers in brinjal, tomato, chilli. If infestation occurs, installation of pheromone traps @ 40 traps per acre is advised.
- Present weather is congenial for sucking pests in vegetables. To control spray Malathion 57 EC @ 1.0 ml/litre water.
- Apply Irrigation.

### **Horticultural**

- Protect young plants of horticulture crops from low temperature
- It is advised to cover the small horticulture plants with grass/polythene sheet to avoid cold paralysis
- To protect young fruit plants from chilly winds, cover young fruit plants with straw/polythene sheets/ gunny bags.
- In fruit crops, apply organic mulches after earthing up and weeding to conserve residual soil moisture as well as to maintain the soil temperature.
- Under the present weather conditions, there is a chance of an attack of pseudostem weevil to young banana plants of 3-4 months age. Spray Chlorpyrifos 2 ml/liter of water
- Weather conditions are congenial for bud rot disease in coconut; spray Bordeaux mixture 1% on spindle leaves and crown of disease affected as well as neighbouring palms.
- Apply Irrigation.

### **Mustard**

- **Stage:** Pod initiation
- Occurrence of sawfly may be seen in the mustard crops under the present environment conditions. To control this pest spray Chlorpyrifos 20 EC @ 5 ml/litre of water on fair weather.
- The present weather condition is favorable for the incidence of powdery mildew in mustard. Spray of Carbendazim 12% + Mancozeb 62% @ 2g /litre of water is advised.
- Go for intercultural operations.
- Apply light irrigation.

### **Livestock**

- Take necessary steps to prevent external parasites.
- The temperature can be increased by lighting high-wattage bulbs in cowsheds.
- Feed rich grain.
- Give anthelmintic drugs.
- Vaccinate the cattle to prevent scurvy.
- Give lukewarm water to drink.
- Feed 50-100g mineral mixture daily with feed to maintain cattle health.

### **Poultry**

- Keep the poultry shed clean and dry.

- Protect the chicken from the cold air with plastic screens or plastic bags on all sides.
- High power bulbs (100 watts or more) in the poultry shed for 1-2 hours after dusk will increase egg production and diseases will reduce.
- Take necessary measures to protect against fungal diseases.
- Vaccinate Spring Disease of Chicken.
- Let the hens out of the coop a little late in the morning and close the coop door in the evening.

### **Fishery**

- Reduce fish density, and transfer to other ponds if necessary.
- Ensure enough water in the pond to avoid the harmful effects of low temperatures.
- Reduce food in winter. Stop feeding if needed.
- Keep clean the pond water.
- Apply lime in the pond to protect fish from various bacterial diseases in winter. (250-500 gm/per decimal)

### **Chattogram region (Districts: Chattogram, Lakshmipur, Coxsbazar, Noakhali and Feni)**

### **Rice Boro**

- **Stage:** Tillering
- Keep the field and irrigation channel weed free. Weeding should be done before application of fertilizer and mixed the fertilizer with soil. Hand weeding or weedicides (viz. Rifit 500EC, Superhit 500 EC. etc. @ 134 ml/bigha) may be used for weed control.
- Weeding with weeder after top dressing of urea increases the activity of fertilizer.
- Apply urea 13 kg/bigha as first top dressing after 15-20 days of transplanting (4-5 tillers/hill).
- There is a chance of attack of insect/pests like, Rice stemborer, Rice hispa, etc. Constant monitoring is required for its level of incidences.
- If noticed, collect the adults using hand net & destroy them by burying under soil or by burning.
- To captivate & control the butterflies, place 2 Pheromone Traps/bigha. Also apply Carbofuran 5g @10kg / ha. or Diazinon 10g @17kg/ha. for its control.
- There is chance of Blast and brown spot attack due to light fog and raised temperature. Apply Trooper 6.0g or Nativo 6.0g/litre water twice in 10-15 days.
- Maintain 5-7 cm land water level.
- Apply irrigation.

### **Vegetable**

- Present weather condition is favourable for the incidence of yellowish-brown spot in tomato, Spray mancozeb 2.5-3g/litres of water.
- Under the prevailing weather condition, monitoring is advised for infestation of fruit borers in brinjal, tomato, chilli. If infestation occurs, installation of pheromone traps @ 40 traps per acre is advised.

- Present weather is congenial for sucking pests in vegetables. To control spray Malathion 57 EC @ 1.0 ml/litre water.
- Apply Irrigation.

### **Horticultural**

- In fruit crops, apply organic mulches after earthing up and weeding to conserve residual soil moisture as well as to maintain the soil temperature.
- Under the present weather conditions, there is a chance of an attack of pseudostem weevil to young banana plants of 3-4 months age. Spray Chlorpyrifos 2 ml/liter of water
- Weather conditions are congenial for bud rot disease in coconut; spray Bordeaux mixture 1% on spindle leaves and crown of disease affected as well as neighbouring palms.
- Apply Irrigation.

### **Mustard**

- **Stage:** Flowering
- Advice for weedings in mustard fields.

### **Livestock**

- Take necessary steps to prevent external parasites.
- The temperature can be increased by lighting high-wattage bulbs in cowsheds.
- Feed rich grain.
- Give anthelmintic drugs.
- Vaccinate the cattle to prevent scurvy.
- Give lukewarm water to drink.
- Feed 50-100g mineral mixture daily with feed to maintain cattle health.

### **Poultry**

- Keep the poultry shed clean and dry.
- Take necessary measures to protect against fungal diseases.
- Vaccinate Spring Disease of Chicken.
- Let the hens out of the coop a little late in the morning and close the coop door in the evening.

### **Fishery**

- Reduce fish density, and transfer to other ponds if necessary.
- Ensure enough water in the pond to avoid the harmful effects of low temperatures.
- Reduce food in winter. Stop feeding if needed.
- Keep clean the pond water.
- Apply lime in the pond to protect fish from various bacterial diseases in winter. (250-500 gm/per decimal)

## Cumilla Region (Districts: Cumilla, Chandpur, Bramanbaria)

### Wheat

- **Stage:** Vegetative Growth
- Do thinning operations if the plants have been sown in dense condition.
- Farmers are advised to apply 2nd time irrigation at wheat field at 55-60 DAS (panicle initiation stage) for good yield.
- If symptoms of sulphur deficiency noticed in wheat crop, broadcast 1.0Kg gypsum/decimal is advised.
- If rats are noticed, arrange net to catch the same or apply 2% Zinc phosphide or Lanirat (3-5g/hole) to control the attack of rats.
- At this stage of crop and prevailing weather conditions, monitoring of termite infestation is advised in late sown wheat crop. If termite infestation is observed in the crop field, apply Chlorpyrifos 20EC @ 4.0 ml/litre in the soil at evening hours.
- Apply irrigation.

### Rice Boro

- **Stage:** Heading
- Arrange proper solarisation within the row by stirring the plants after each 2 rows.
- Where seedlings are 90-110 days old apply last top dressing with urea and potash.
- There is a chance of attack of insect/pests like, Rice Stem borer, Rice hispa, etc. Constant monitoring is required for its level of incidences. If noticed, collect the adults using hand net & destroy them by burying under soil or by burning. Also apply Carbofuran 5g @10kg / ha. or Diazinon 10g @17kg/ha. for its control.
- There is chance of Blast and brown spot attack due to light fog and raised temperature. . Apply Trooper 6.0g or Nativo 6.0g/litre water twice in 10-15 days.
- Keep the field and irrigation channel weed free.
- Maintain 2-5 cm land water level.
- Apply irrigation.

### Vegetable

- Protect young plants of vegetable from low temperature.
- Present weather condition is favourable for the incidence of yellowish-brown spot in tomato, Spray mancozeb 2.5-3g/litres of water.
- Under cold conditions, there may be infestation of yellow vein mosaic in okra. Farmers are advised to remove all infected plants and destroy them. Disinfect gardening tools after every use. Control white fly, the vector, by spraying imidacloprid 17.8 SL @ 0.5ml/ liters of water before populations reach high levels.
- Under the prevailing weather condition, monitoring is advised for infestation of fruit borers in brinjal, tomato, chilli. If infestation occurs, installation of pheromone traps @ 40 traps per acre is advised.
- Present weather is congenial for sucking pests in vegetables. To control spray Malathion 57 EC @ 1.0 ml/litre water.



- Apply Irrigation.

### **Horticultural**

- Protect young plants of horticulture crops from low temperature
- It is advised to cover the small horticulture plants with grass/polythene sheet to avoid cold paralysis
- To protect young fruit plants from chilly winds, cover young fruit plants with straw/polythene sheets/ gunny bags.
- In fruit crops, apply organic mulches after earthing up and weeding to conserve residual soil moisture as well as to maintain the soil temperature.
- Under the present weather conditions, there is a chance of an attack of pseudostem weevil to young banana plants of 3-4 months age. Spray Chlorpyrifos 2 ml/liter of water
- Weather conditions are congenial for bud rot disease in coconut; spray Bordeaux mixture 1% on spindle leaves and crown of disease affected as well as neighbouring palms.
- Apply Irrigation.

### **Mustard**

- **Stage:** Pod initiation
- Occurrence of sawfly may be seen in the mustard crops under the present environment conditions. To control this pest spray Chlorpyrifos 20 EC @ 5 ml/litre of water on fair weather.
- The present weather condition is favorable for the incidence of powdery mildew in mustard. Spray of Carbendazim 12% + Mancozeb 62% @ 2g /litre of water is advised.
- Go for intercultural operations.
- Apply light irrigation.

### **Livestock**

- Take necessary steps to prevent external parasites.
- The temperature can be increased by lighting high-wattage bulbs in cowsheds.
- Feed rich grain.
- Give anthelmintic drugs.
- Vaccinate the cattle to prevent scurvy.
- Give lukewarm water to drink.
- Feed 50-100g mineral mixture daily with feed to maintain cattle health.

### **Poultry**

- Keep the poultry shed clean and dry.
- Protect the chicken from the cold air with plastic screens or plastic bags on all sides.
- High power bulbs (100 watts or more) in the poultry shed for 1-2 hours after dusk will increase egg production and diseases will reduce.
- Take necessary measures to protect against fungal diseases.
- Vaccinate Spring Disease of Chicken.

- Let the hens out of the coop a little late in the morning and close the coop door in the evening.

### **Fishery**

- Reduce fish density, and transfer to other ponds if necessary.
- Ensure enough water in the pond to avoid the harmful effects of low temperatures.
- Reduce food in winter. Stop feeding if needed.
- Keep clean the pond water.
- Apply lime in the pond to protect fish from various bacterial diseases in winter. (250-500 gm/per decimal)

## **Khulna Region (Districts: Khulna, Satkhira, Bagerhat and Narail)**

### **Wheat**

- **Stage:** Flowering
- Special monitoring of blast disease is required as there is chance of the disease due to likely incidence of fog during late night till morning. If noticed, apply Nativo 75 WG @ 6 gm/litre water to control the disease.
- At this stage of crop and prevailing weather conditions, monitoring of termite infestation is advised in late sown wheat crop. If termite infestation is observed in the crop field, spray Chlorpyrifos 20EC @ 4.0 ml/litre water in the soil at evening hours.
- There is chance of attack of leaf rust disease at this stage of crop. If noticed spray with fungicide Tilt-250EC @ 0.5ml/litre water 2-3 times at 12-15 days' interval.
- Apply irrigation.

### **Rice Boro**

- **Stage:** Seedbed
- Take appropriate action for preparation of seedbed for boro paddy. Prepare the seedbed in high land and also make arrangements for draining out of water and also advised for community based seedbed preparation.
- Construct 40-50 cm. drain in between two seedbeds. This will be used for draining out extra water, irrigation also apply fertilizer/insecticide as and when necessary.
- Advise to use recommended varieties of seed.
- If required, provide proper treatment of seeds so that there will be less chance of diseases.
- Close monitoring is required so that birds should not take away the seed from the seed bed.
- After 4-5 days of seed germination, it is better to maintain water level 2-3 cm in seed bed so that it can control the weeds and seed damages due to birds.
- If the seedbed becomes yellow, apply urea at the rate of 283 gm per decimal. Apply 400 gm gypsum per decimal if the seedlings are still not recovered after application of urea.

## **Vegetable**

- Present weather condition is favourable for the incidence of yellowish-brown spot in tomato, Spray mancozeb 2.5-3g/litres of water.
- Under the prevailing weather condition, monitoring is advised for infestation of fruit borers in brinjal, tomato, chilli. If infestation occurs, installation of pheromone traps @ 40 traps per acre is advised.
- Present weather is congenial for sucking pests in vegetables. To control spray Malathion 57 EC @ 1.0 ml/litre water.
- Apply Irrigation.

## **Horticultural**

- In fruit crops, apply organic mulches after earthing up and weeding to conserve residual soil moisture as well as to maintain the soil temperature.
- Under the present weather conditions, there is a chance of an attack of pseudostem weevil to young banana plants of 3-4 months age. Spray Chlorpyrifos 2 ml/liter of water
- Weather conditions are congenial for bud rot disease in coconut; spray Bordeaux mixture 1% on spindle leaves and crown of disease affected as well as neighbouring palms.
- Apply Irrigation.

## **Livestock**

- Take necessary steps to prevent external parasites.
- The temperature can be increased by lighting high-wattage bulbs in cowsheds.
- Feed rich grain.
- Give anthelmintic drugs.
- Vaccinate the cattle to prevent scurvy.
- Give lukewarm water to drink.
- Feed 50-100g mineral mixture daily with feed to maintain cattle health.

## **Poultry**

- Keep the poultry shed clean and dry.
- Take necessary measures to protect against fungal diseases.
- Vaccinate Spring Disease of Chicken.
- Let the hens out of the coop a little late in the morning and close the coop door in the evening.

## **Fishery**

- Reduce fish density, and transfer to other ponds if necessary.
- Ensure enough water in the pond to avoid the harmful effects of low temperatures.
- Reduce food in winter. Stop feeding if needed.
- Keep clean the pond water.

- Apply lime in the pond to protect fish from various bacterial diseases in winter. (250-500 gm/per decimal)

### **Mymensingh Region (Districts: Mymensingh, Kishoregonj, Jamalpur, Netrokona, Sherpur)**

#### **Wheat**

- **Stage:** Grain Formation
- Special monitoring of blast disease is required as there is chance of the disease due to likely incidence of fog during late night till morning. If noticed, apply Nativo 75 WG 6 gm/decimal to control the disease.
- During the stage, farmers are advised to 3rd time irrigation at wheat field for good yield.
- At this stage of crop and prevailing weather conditions, monitoring of termite infestation is advised in late sown wheat crop. If termite infestation is observed in the crop field, apply Chlorpyrifos 20EC @ 4.0 ml/litre in the soil at evening hours.
- Apply irrigation.

#### **Rice Boro**

- **Stage:** Tillering
- Keep the field and irrigation channel weed free. Weeding should be done before application of fertilizer and mixed the fertilizer with soil. Hand weeding or weedicides (viz. Rifit 500EC, Superhit 500 EC. etc. @ 134 ml/bigha) may be used for weed control.
- Weeding with weeder after top dressing of urea increases the activity of fertilizer.
- Apply urea 13 kg/bigha as first top dressing after 15-20 days of transplanting (4-5 tillers/hill).
- There is a chance of attack of insect/pests like, Rice stemborer, Rice hispa, etc. Constant monitoring is required for its level of incidences.
- If noticed, collect the adults using hand net & destroy them by burying under soil or by burning.
- To captivate & control the butterflies, place 2 Pheromone Traps/bigha. Also apply Carbofuran 5g @10kg / ha. or Diazinon 10g @17kg/ha. for its control.
- There is chance of Blast and brown spot attack due to light fog and raised temperature. Apply Trooper 6.0g or Nativo 6.0g/litre water twice in 10-15 days.
- Maintain 5-7 cm land water level.
- Apply irrigation.

#### **Vegetable**

- Present weather condition is favourable for the incidence of yellowish-brown spot in tomato, Spray mancozeb 2.5-3g/litres of water.
- Under the prevailing weather condition, monitoring is advised for infestation of fruit borers in brinjal, tomato, chilli. If infestation occurs, installation of pheromone traps @ 40 traps per acre is advised.

- Present weather is congenial for sucking pests in vegetables. To control spray Malathion 57 EC @ 1.0 ml/litre water.
- Apply Irrigation.

### **Horticultural**

- In fruit crops, apply organic mulches after earthing up and weeding to conserve residual soil moisture as well as to maintain the soil temperature.
- Under the present weather conditions, there is a chance of an attack of pseudostem weevil to young banana plants of 3-4 months age. Spray Chlorpyrifos 2 ml/liter of water
- Weather conditions are congenial for bud rot disease in coconut; spray Bordeaux mixture 1% on spindle leaves and crown of disease affected as well as neighbouring palms.
- Apply Irrigation.

### **Mustard**

- **Stage:** Pod initiation
- Occurrence of sawfly may be seen in the mustard crops under the present environment conditions. To control this pest spray Chlorpyrifos 20 EC @ 5 ml/litre of water on fair weather.
- The present weather condition is favorable for the incidence of powdery mildew in mustard. Spray of Carbendazim 12% + Mancozeb 62% @ 2g /litre of water is advised.
- Go for intercultural operations.
- Apply light irrigation.

### **Livestock**

- Take necessary steps to prevent external parasites.
- The temperature can be increased by lighting high-wattage bulbs in cowsheds.
- Feed rich grain.
- Give anthelmintic drugs.
- Vaccinate the cattle to prevent scurvy.
- Give lukewarm water to drink.
- Feed 50-100g mineral mixture daily with feed to maintain cattle health.

### **Poultry**

- Keep the poultry shed clean and dry.
- Take necessary measures to protect against fungal diseases.
- Vaccinate Spring Disease of Chicken.
- Let the hens out of the coop a little late in the morning and close the coop door in the evening.

### **Fishery**

- Reduce fish density, and transfer to other ponds if necessary.

- Ensure enough water in the pond to avoid the harmful effects of low temperatures.
- Reduce food in winter. Stop feeding if needed.
- Keep clean the pond water.
- Apply lime in the pond to protect fish from various bacterial diseases in winter. (250-500 gm/per decimal)