



NATIONAL AGROMETEOROLOGICAL ADVISORY SERVICE BULLETIN

19 April 2023 (THURSDAY)
[FOR THE PERIOD 19.04.2023 – 23.04.2023]



DISCLAIMER

Under the Agro-meteorological Information System Development Project, Agromet Advisory Service Bulletins at National & Sixty Four (64) districts have been prepared on experimental basis. These bulletins are being displayed through the website of Department of Agricultural Extension for valuable comments/ suggestions from all concerned.

ISSUED BY

Agro-Meteorological Information Systems
Development Project
Department of Agricultural Extension (DAE)
Ministry of Agriculture
In collaboration with Bangladesh
Meteorological Department

Realized Weather at different locations in the country

Rainfall for last 24 hours (till 06 AM on 19 April 2023) and maximum temperature on 18 April and minimum temperature on 19 April 2023 is given below:

Name of Divisions	Name of Stations	Rain fall (mm)	Max. Temp (°C)	Min. Temp (°C)	Name of Divisions	Name of Stations	Rain fall (mm)	Max. Temp (°C)	Min. Temp (°C)	
Dhaka	Dhaka	00	37.1	28.0	Chattogram	Chattogram	00	34.0	27.5	
	Tangail	00	36.8	28.0		Sandwip	00	34.6	26.7	
	Faridpur	00	37.3	27.8		Sitakunda	xx	34.5	xx	
	Madaripur	00	36.7	26.8		Rangamati	00	37.0	26.5	
	Gopalganj	00	36.5	27.8		Cumilla	00	35.2	27.4	
	Nikli	00	36.0	25.6		Chandpur	00	35.8	27.8	
Rajshahi	Rajshahi	00	<u>42.0</u>	27.4		M.Court	00	35.5	27.5	
	Ishurdi	00	40.2	28.0		Feni	00	35.6	25.8	
	Bogura	00	36.7	28.0		Hatiya	00	34.0	26.6	
	Badalgachhi	00	37.2	27.4		Cox's Bazar	00	34.5	27.3	
	Tarash	00	35.5	27.4		Kutubdia	xx	34.8	xx	
						Teknaf	00	34.4	<u>22.4</u>	
Rangpur	Rangpur	00	37.0	27.2		Khulna	Bandarban	00	36.4	25.7
	Dinajpur	00	40.0	23.9			Khulna	00	37.5	27.8
	Sayedpur	00	38.0	26.4	Mongla		00	38.4	27.7	
	Tetulia	00	36.0	25.9	Satkhira		00	37.7	28.0	
	Dimla	00	35.9	25.7	Jashore		00	38.6	27.4	
	Rajarhat	00	35.6	24.3	Chuadanga		00	40.9	27.5	
Mymensingh	Mymensingh	00	34.5	28.3	Kumarkhali		00	39.6	28.0	
	Netrokona	00	34.5	26.0	Barishal		Barishal	00	36.0	27.4
Sylhet	Sylhet	00	35.5	26.3			Patuakhali	00	36.2	27.0
	Srimangal	00	36.4	23.6			Khepupara	00	35.0	27.1
						Bhola	00	36.4	27.3	

Highlights:

- Country average bright sunshine hour was 9.12 hours per day during last week.
- Country average free water loss during the previous week was 4.40 mm per day.

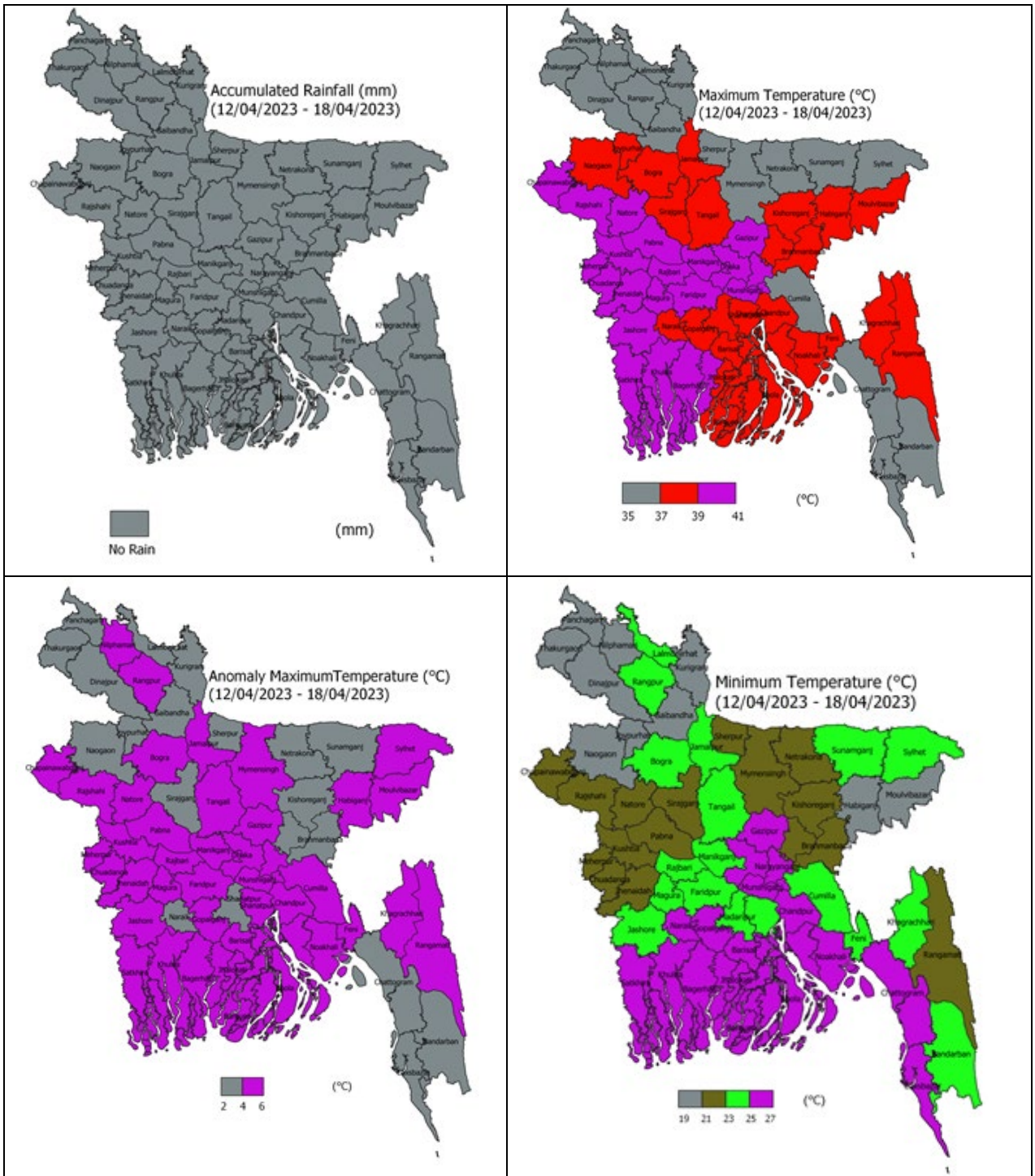
Weather Forecast Valid for 24 Hours commencing 06 PM Today:

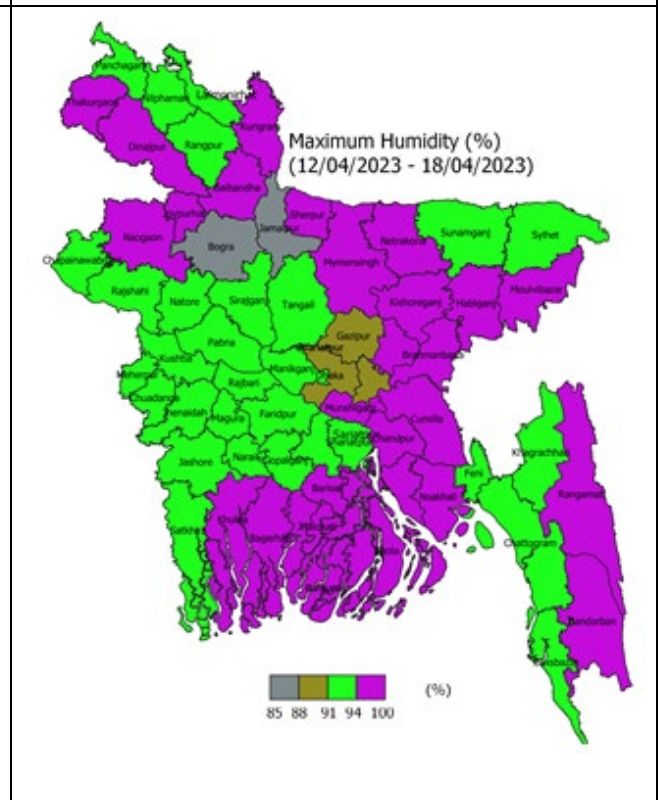
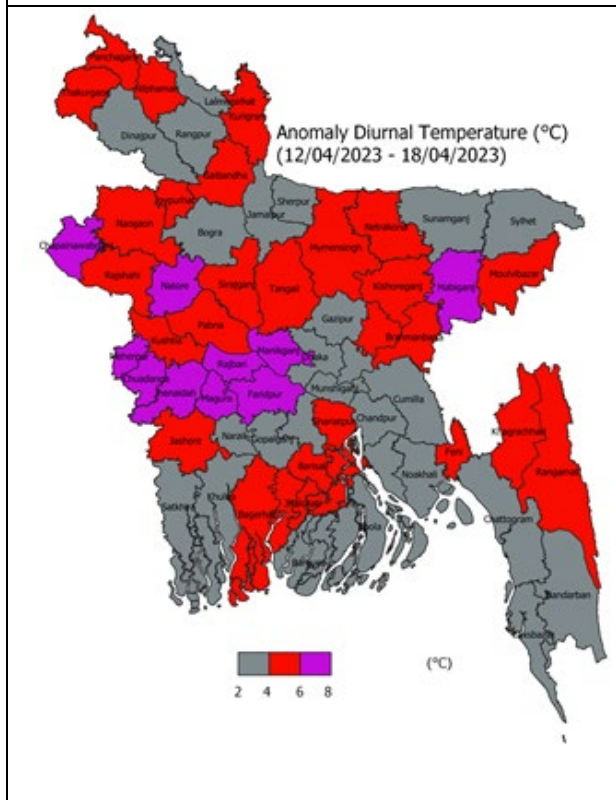
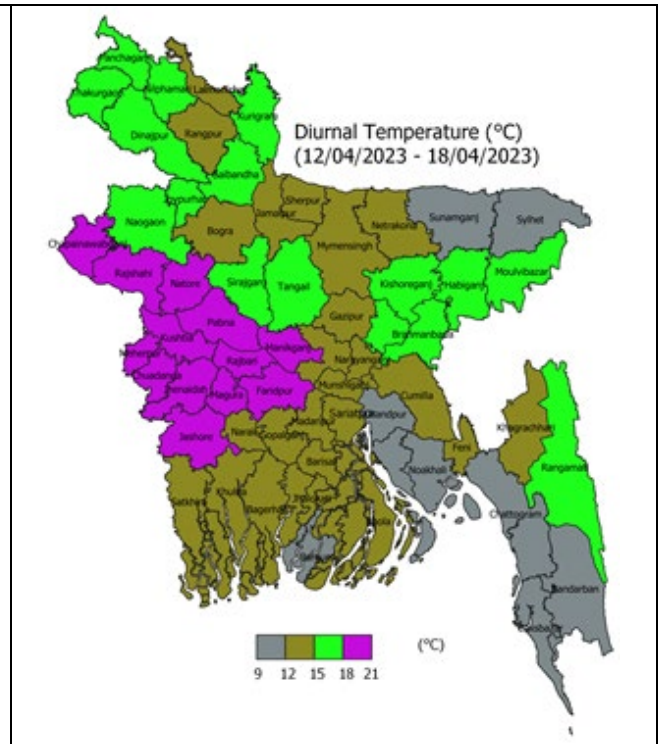
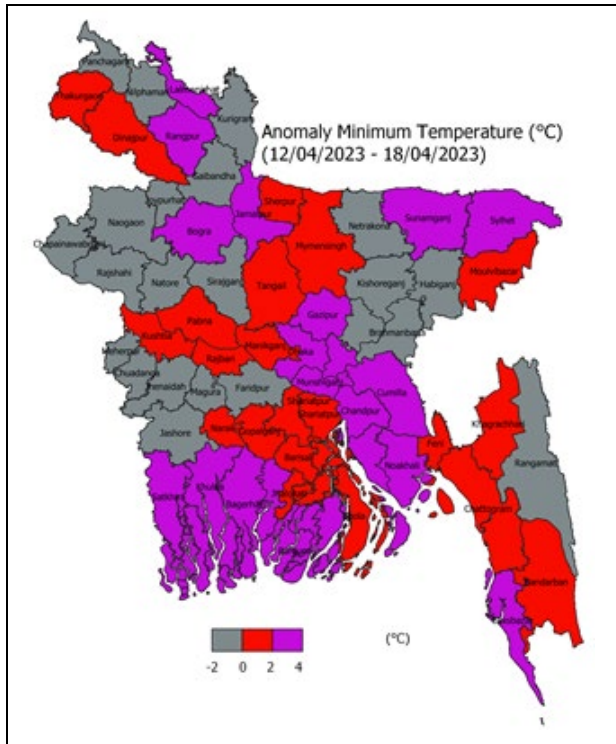
Forecast: Rain/thunder showers accompanied by temporary gusty/squally wind is likely to occur at one or two places over Mymensingh & Sylhet divisions with hails at isolated places. Weather may remain mainly dry with temporary partly cloudy sky elsewhere over the country.

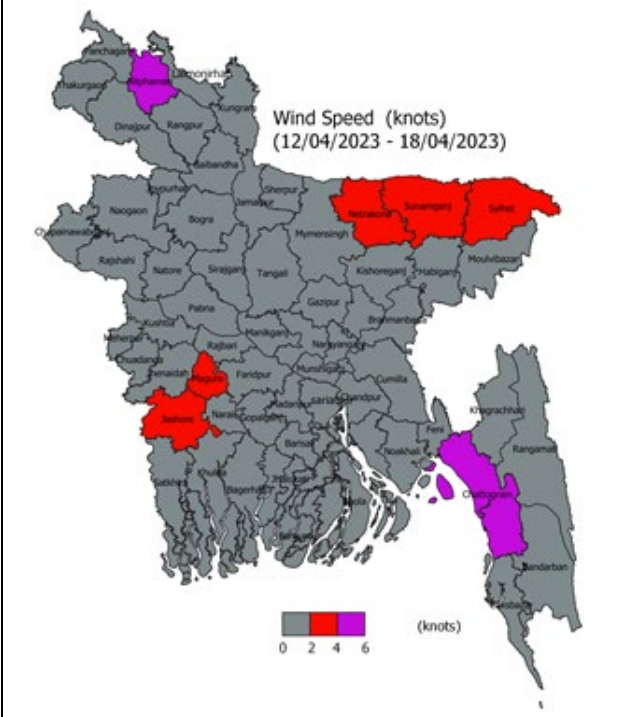
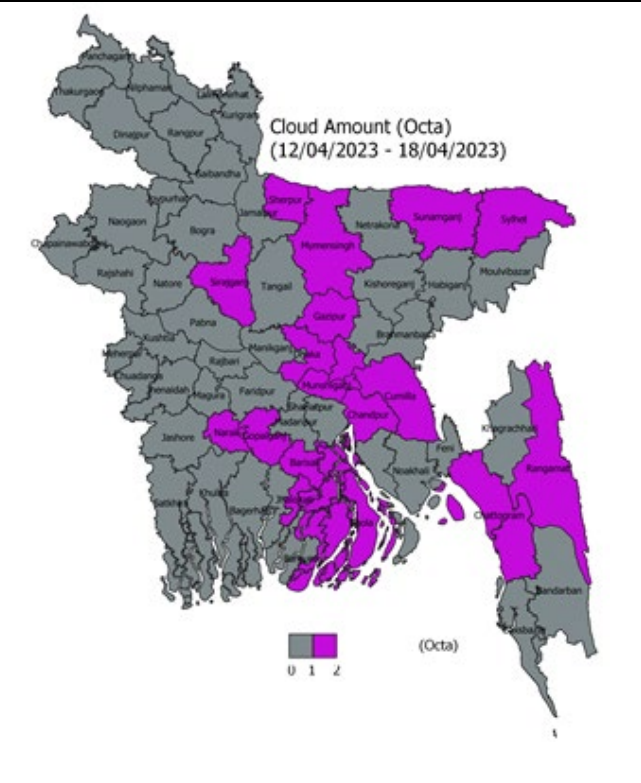
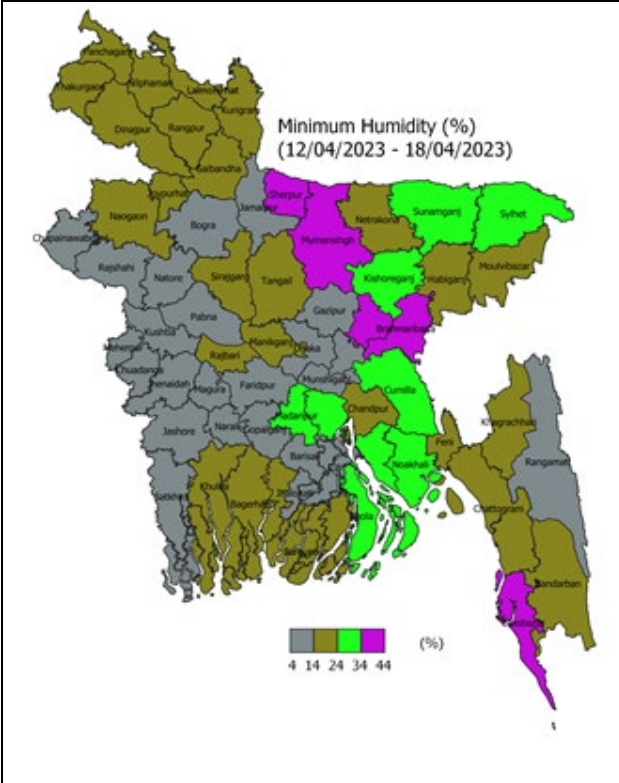
Heat Wave: Severe heat wave is sweeping over the districts of Dinajpur, Rajshahi, Pabna & Chuadanga and mild to moderate heat wave is sweeping over Dhaka & Barishal divisions and the rest part of Rajshahi & Khulna divisions and the districts of Panchagarh, Rangpur, Nilphamari, Moulvibazar, Rangamati & Bandarban and it may continue.

Temperature: Day and night temperature may remain nearly unchanged over the country.

Spatial Distribution of weather parameters for the Week ending on 18 April 2023





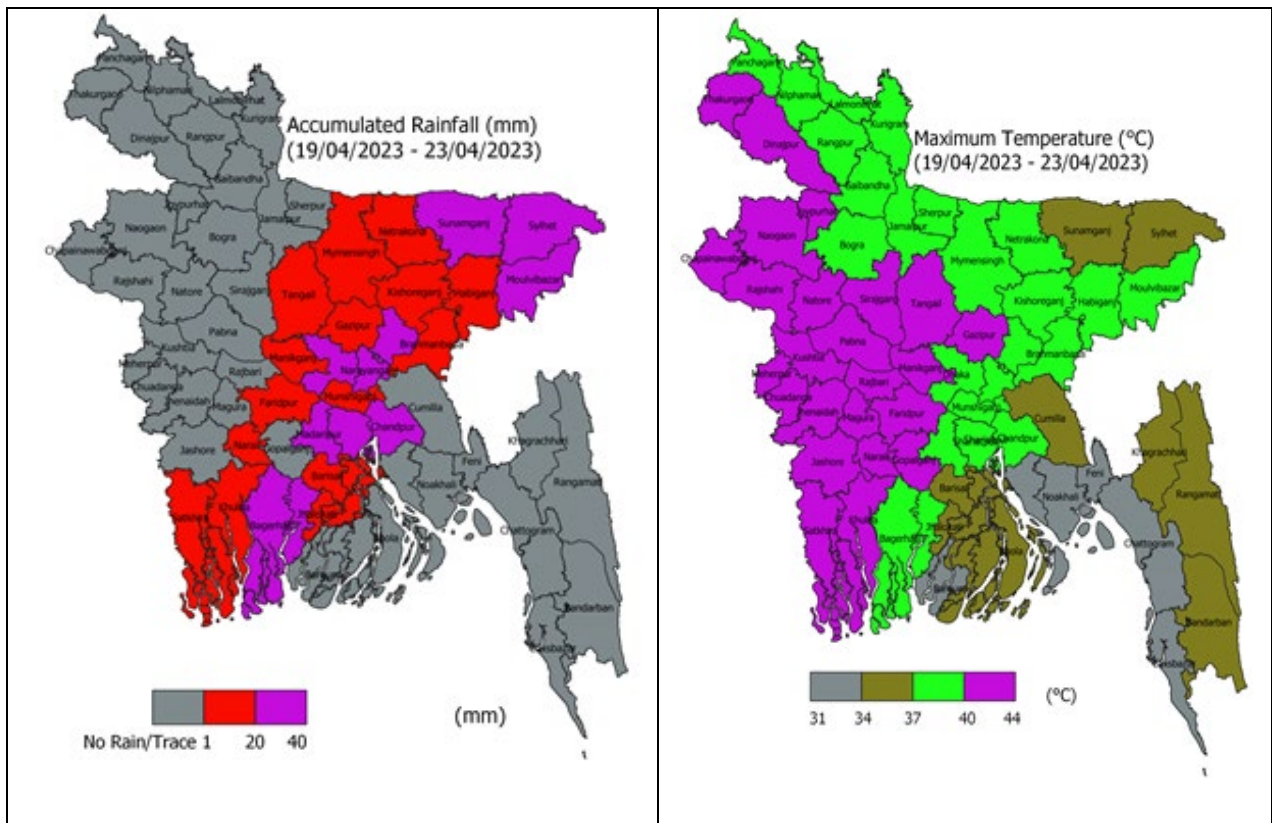


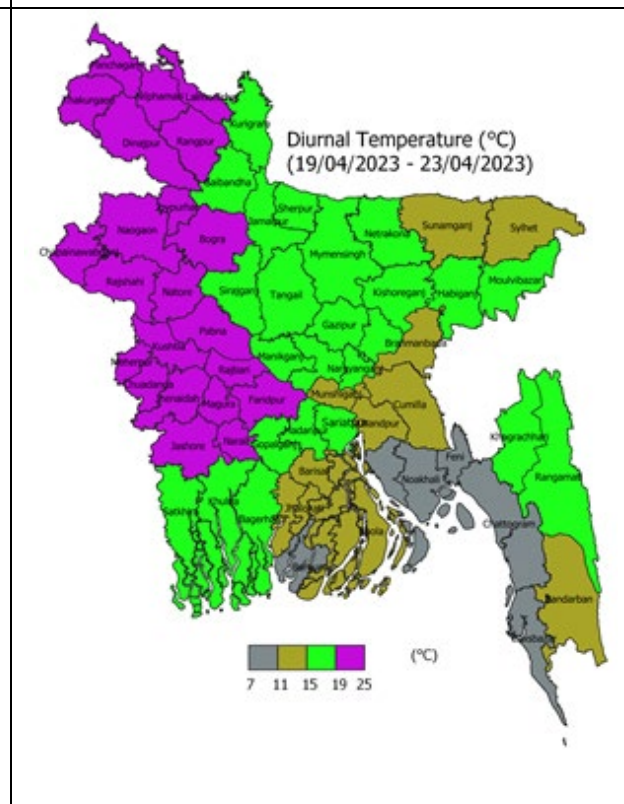
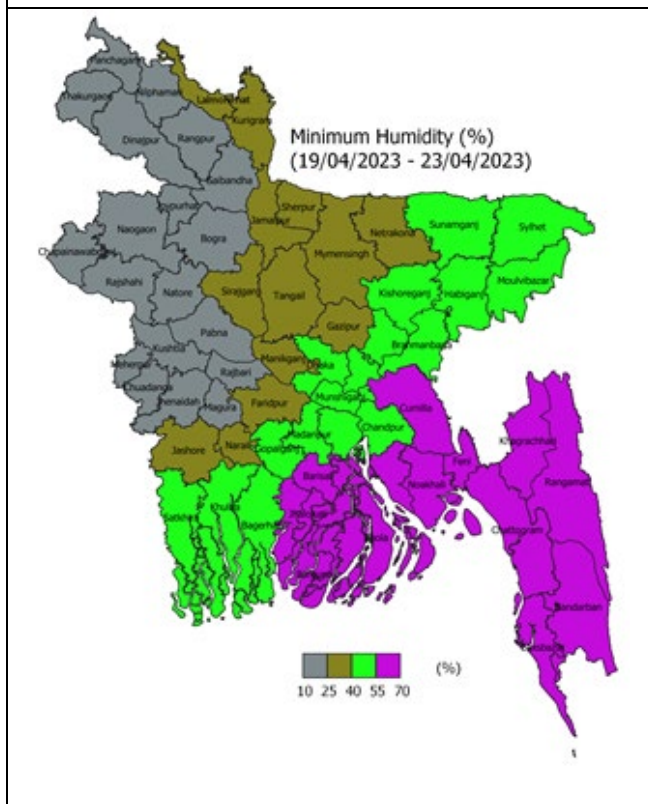
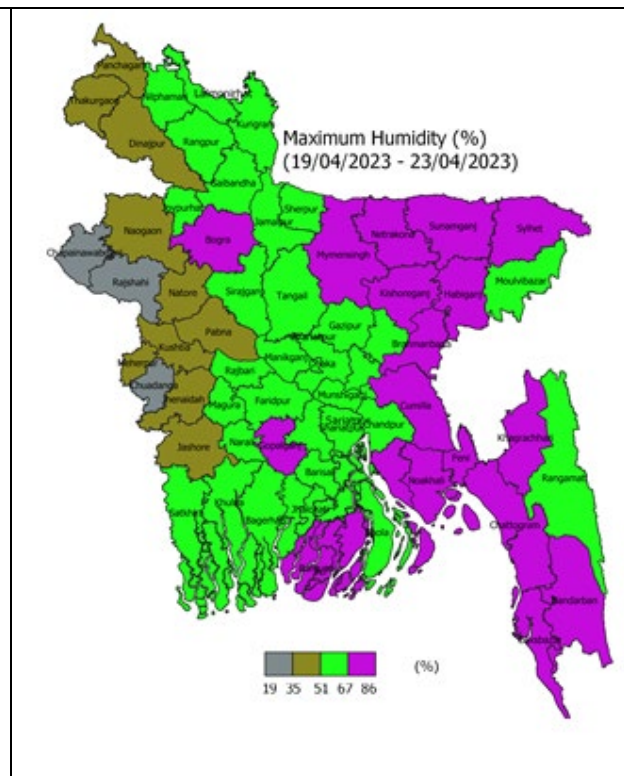
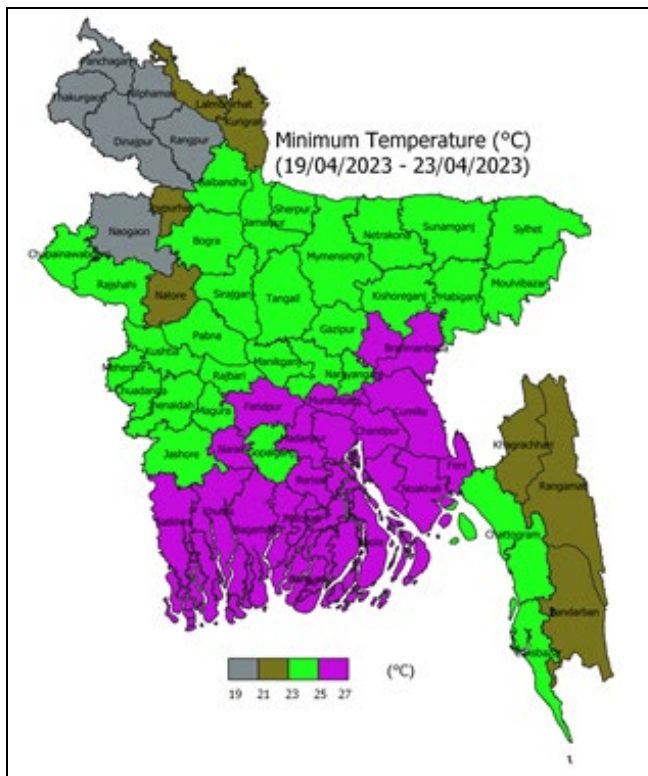
Weather Forecast and Advisory for the Period of 16.04.2023 to 23.04.2023

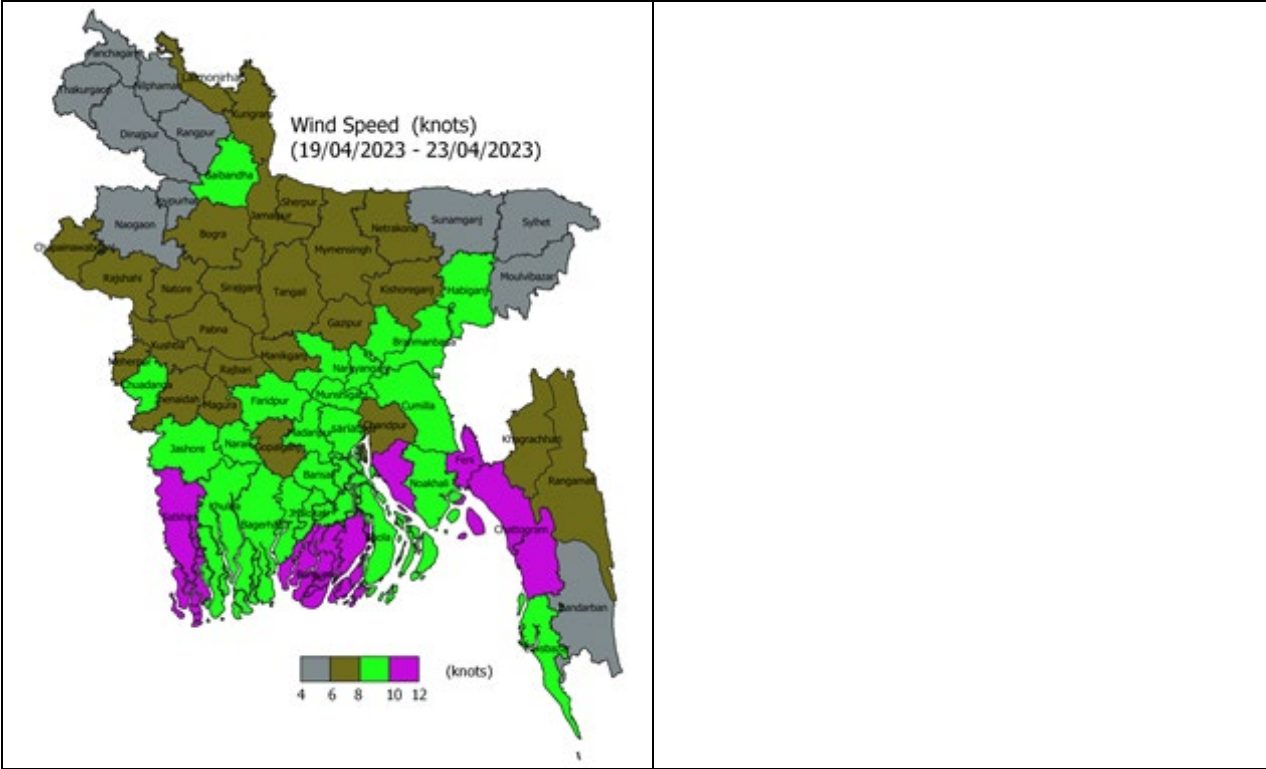
Bright sunshine hour is likely to be from 7.00 to 9.00 hours per day during this week. Average free water loss is likely to be from 3.00 to 5.00 mm per day during this week.

- Weather may remain mainly dry with temporary partly cloudy sky over the country during 1st half of this period.
- Rain/Thunder showers accompanied by temporary gusty/Squally wind with lightning flashes and isolated hails is likely to occur at many places over Sylhet & Mymensingh divisions; at one or two places over Dhaka, Khulna, Barishal, Chattogram, Rangpur and Rajshahi divisions during 2nd half of this period.
- Day temperature may remain nearly unchanged and night temperature may rise slightly over the country during 1st half of this period; Day and Night temperature may fall gradually during 2nd half of this period.
- Prevailing mild to severe heat wave condition may continue over the country during 1st half of this period and intensity of the heat wave condition is likely to reduce over the country during 2nd half of this period

District Wise Quantitative Weather Forecast for next Five days from 19 April- 23 April 2023





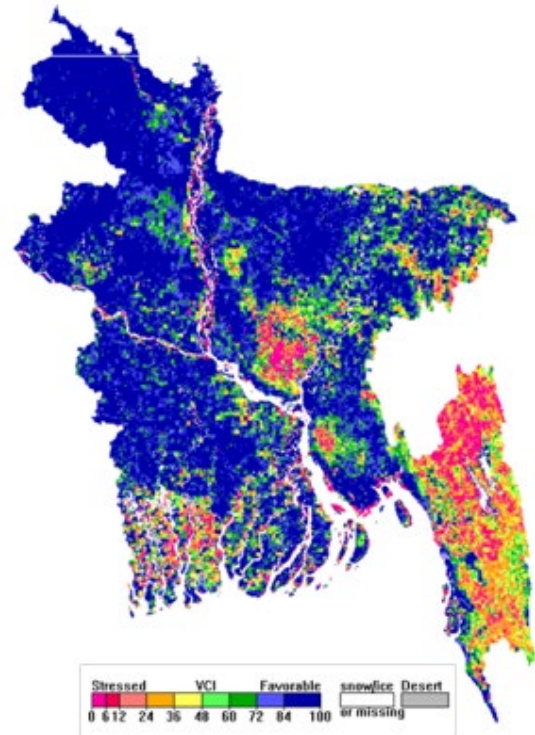


Different Satellite Products over Bangladesh

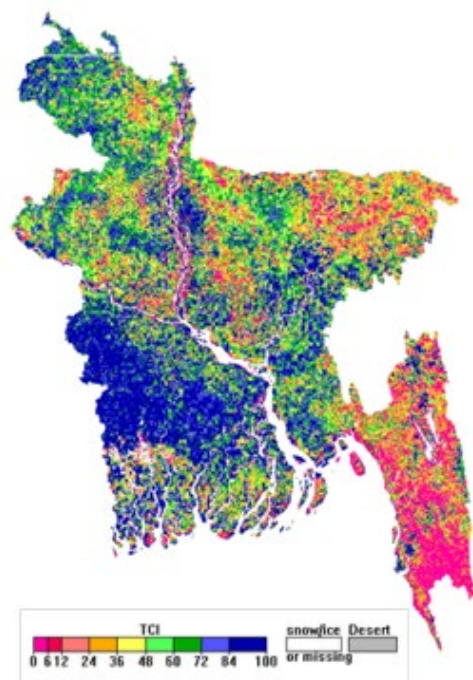
NOAA/VIIRS BLENDED NDVI composite for the week No. 15 (09 April-15 April) over Agricultural regions of Bangladesh



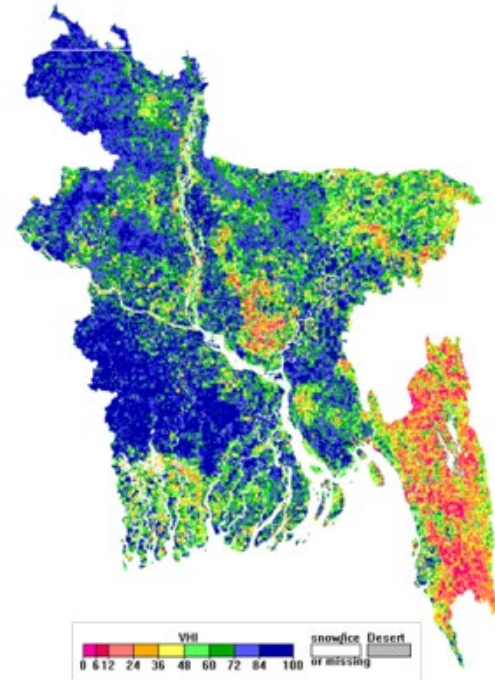
NOAA/ AVHRR BLENDED VCI composite for the week No. 15 (09 April-15 April) over Agricultural regions of Bangladesh



NOAA/ AVHRR BLENDED TCI composite for the week No. 15 (09 April-15 April) over Agricultural regions of Bangladesh



NOAA/ AVHRR BLENDED VHI composite for the week No. 15 (09 April-15 April) over Agricultural regions of Bangladesh



Agromet Advisories

According to the medium range forecast, light to moderate rainfall is likely to occur in some districts of the country in the next five days. The following agromet advisories are provided in these circumstances:

Rajshahi Region (Districts: Rajshahi, Chapainawabganj, Naogaon and Natore)

Jute

- **Stage:** Vegetative
- It is advised to keep jute field clean and weed free to avoid infestation from insect pests and diseases.
- Keep the drain and irrigation channel weed free and clean to avoid excess water to stand in the plot at growing stages.
- Farmers are advised to do 2nd intercultural operation, mulching and thinning at 20-25 days after sowing (DAS).
- The prevailing weather conditions are congenial for incidence of Field cricket in Jute field. Farmers are advised to spray Chlorpyrephos 20EC @ 2.0 ml/liter water to control insect.
- There is chance of attack of Jute Yellow mite at this stage of Jute crop. Spray Sulphur (Thiovit 80WG) @ 3.5g/liter water.
- At this stage of crop, there is a chance of Jute hairy caterpillar and Jute semi looper attack. To control pest farmers are advised to hand pick the egg mass and destroy them by burning or in kerosinized water. In case of severe attack spray Diazinon 60EC @ 1.0ml/liter of water.
- Present weather conditions and at this stage of crop, the incidence of Seedling blight and Stem rot may be seen in the Jute field. To control this pest spray Mancozeb (Dithane M45/Indofil M45) @ 2g/litre of water on fair weather. All the plant protection measure should be taken at clear & sunny days.
- Farmers are advise for 3rd weeding, mulching and simultaneous thinning at 40-50 DAS. Uproot comparatively under growth plants during this time.
- To protect deshi jute crop (>4 ft tall) from lodging due to high wind speed, the peripheral jute plants (round the field) need to be tied together by taking 4-5 jute plants in a consecutive manner.
- Apply 80-100 kg urea/ha as top dressing at 45 DAS based on variety.
- Monitor pest and disease incidences and take appropriate plant protection measures.
- Present weather condition is congenial for **Stem rot** infestation. Spray of Mancozeb @ 2gm/L Water

Rice Boro

- **Stage:** Maturity to Harvesting
- Where early transplanted paddy found 80% maturity, harvest and transfer it to a safe place immediately.
- Drain out the water from the land 15 days before harvest.

Vegetable

- Because of increase in temperature, there is chance of sucking pest in vegetable crops. To control, application of Malathion 57EC/Dimathoate 40EC @ 1.0ml per litre of water is advised once a week.
- For control of fruit and shoot borer in brinjal under present weather condition, it is advised to apply Cypermethrin 10EC @ 0.5ml/litre or Emamectin Benzoate 5 SP @1.0g/litre or Deltamethrin 2.5EC @ 1.0ml/litre or Diazinon 60EC@ 1.0ml/litre water.
- Monitoring is advised for infestation of leaf hopper in okra during present weather condition. Spraying of Imidacloprid @ 0.5ml/litre or Cypermethrin 10EC @ 1.0ml/litre of water is recommended for control of leaf hopper.
- Apply Irrigation.

Horticultural

- The prevailing weather conditions are favorable for the incidence of fruit fly in mango. Farmers are advised to install 32 Pheromon traps /acre to control the fruit fly.
- There are chances of termite attack in the standing horticultural crops. Hence, to control, apply Chlorpyrephos 20 EC or Fipronil 5 SC @ 2.0 ml/litre for termites.
- It is advised to provide mechanical support in banana and papaya plants to prevent lodging due to gusty wind. Harvest the matured and undamaged banana bunches and papaya fruits under the present weather condition and spray Copper oxychloride @ 3 g per litre of water for control of fungal diseases.
- Apply Irrigation.

Livestock

- Give anthelmintic drugs.
- Use naphthalene or turpentine oil to reduce mosquitoes.
- Feed mineral mixture to increase immunity.
- Give enough cold water to drink.
- Keep the cattle in the safest place to protect them from storms, rain, and lightning.
- Keep enough ventilation in cowsheds.
- Keep the cowshed neat and clean.

Poultry

- Vaccinate if not vaccinated against Ranikhet, cholera, duck plague.
- Remove affected poultry if disease occurs.
- Use clean water or glucose saline in more heat.
- Keep the poultry shed clean and dry.

Fishery

- Maintain pond depth of 1-1.5 m.
- Apply fertilizers (per day- Urea 6gm, TSP 4gm per decimal).
- Give quality food according to the quantity of fish at a specific time and place every day.
- Making your fish food, maintain the percentage of proteins and other ingredients as per the formula.
- Observe the fish for getting fed.

- Monitor the growth of fish and disease by sampling every 15 days.
- If there were fish diseases or less growth, contact immediately the nearest Upazila fisheries office.

Rangpur Region (Districts: Rangpur, Kurigram, Gaibandha, Nilphamari, Lalmonirhat)

Jute

- **Stage:** Vegetative
- It is advised to keep jute field clean and weed free to avoid infestation from insect pests and diseases.
- Keep the drain and irrigation channel weed free and clean to avoid excess water to stand in the plot at growing stages.
- Farmers are advised to do 2nd intercultural operation, mulching and thinning at 20-25 days after sowing (DAS).
- The prevailing weather conditions are congenial for incidence of Field cricket in Jute field. Farmers are advised to spray Chlorpyrephos 20EC @ 2.0 ml/liter water to control insect.
- There is chance of attack of Jute Yellow mite at this stage of Jute crop. Spray Sulphur (Thiovit 80WG) @ 3.5g/liter water.
- At this stage of crop, there is a chance of Jute hairy caterpillar and Jute semi looper attack. To control pest farmers are advised to hand pick the egg mass and destroy them by burning or in kerosinized water. In case of severe attack spray Diazinon 60EC @ 1.0ml/liter of water.
- Present weather conditions and at this stage of crop, the incidence of Seedling blight and Stem rot may be seen in the Jute field. To control this pest spray Mancozeb (Dithane M45/Indofil M45) @ 2g/litre of water on fair weather. All the plant protection measure should be taken at clear & sunny days.
- Farmers are advise for 3rd weeding, mulching and simultaneous thinning at 40-50 DAS. Uproot comparatively under growth plants during this time.
- To protect deshi jute crop (>4 ft tall) from lodging due to high wind speed, the peripheral jute plants (round the field) need to be tied together by taking 4-5 jute plants in a consecutive manner.
- Apply 80-100 kg urea/ha as top dressing at 45 DAS based on variety.
- Monitor pest and disease incidences and take appropriate plant protection measures.

Rice Aus

- **Stage:** Tillering
- Apply irrigation.

Vegetable

- Because of increase in temperature, there is chance of sucking pest in vegetable crops. To control, application of Malathion 57EC/Dimathoate 40EC @ 1.0ml per litre of water is advised once a week.
- For control of fruit and shoot borer in brinjal under present weather condition, it is advised to apply Cypermethrin 10EC @ 0.5ml/litre or Emamectin Benzoate 5 SP @1.0g/litre or Deltamethrin 2.5EC @ 1.0ml/litre or Diazinon 60EC@ 1.0ml/litre water.

- Monitoring is advised for infestation of leaf hopper in okra during present weather condition. Spraying of Imidacloprid @ 0.5ml/litre or Cypermethrin 10EC @ 1.0ml/litre of water is recommended for control of leaf hopper.
- Apply Irrigation.

Horticultural

- The prevailing weather conditions are favorable for the incidence of fruit fly in mango. Farmers are advised to install 32 Pheromon traps /acre to control the fruit fly.
- There are chances of termite attack in the standing horticultural crops. Hence, to control, apply Chlorpyrephos 20 EC or Fipronil 5 SC @ 2.0 ml/litre for termites.
- It is advised to provide mechanical support in banana and papaya plants to prevent lodging due to gusty wind. Harvest the matured and undamaged banana bunches and papaya fruits under the present weather condition and spray Copper oxychloride @ 3 g per litre of water for control of fungal diseases.
- Apply Irrigation.

Livestock

- Give anthelmintic drugs.
- Use naphthalene or turpentine oil to reduce mosquitoes.
- Feed mineral mixture to increase immunity.
- Give enough cold water to drink.
- Keep the cattle in the safest place to protect them from storms, rain, and lightning.
- Keep enough ventilation in cowsheds.
- Keep the cowshed neat and clean.

Poultry

- Vaccinate if not vaccinated against Ranikhet, cholera, duck plague.
- Remove affected poultry if disease occurs.
- Use clean water or glucose saline in more heat.
- Keep the poultry shed clean and dry.

Fishery

- Maintain pond depth of 1-1.5 m.
- Apply fertilizers (per day- Urea 6gm, TSP 4gm per decimal).
- Give quality food according to the quantity of fish at a specific time and place every day.
- Making your fish food, maintain the percentage of proteins and other ingredients as per the formula.
- Observe the fish for getting fed.
- Monitor the growth of fish and disease by sampling every 15 days.
- If there were fish diseases or less growth, contact immediately the nearest Upazila fisheries office.

Jute

- **Stage:** Vegetative
- It is advised to keep jute field clean and weed free to avoid infestation from insect pests and diseases.
- Keep the drain and irrigation channel weed free and clean to avoid excess water to stand in the plot at growing stages.
- Farmers are advised to do 2nd intercultural operation, mulching and thinning at 20-25 days after sowing (DAS).
- The prevailing weather conditions are congenial for incidence of Field cricket in Jute field. Farmers are advised to spray Chlorpyrephos 20EC @ 2.0 ml/liter water to control insect.
- There is chance of attack of Jute Yellow mite at this stage of Jute crop. Spray Sulphur (Thiovit 80WG) @ 3.5g/liter water.
- At this stage of crop, there is a chance of Jute hairy caterpillar and Jute semi looper attack. To control pest farmers are advised to hand pick the egg mass and destroy them by burning or in kerosinized water. In case of severe attack spray Diazinon 60EC @ 1.0ml/liter of water.
- Present weather conditions and at this stage of crop, the incidence of Seedling blight and Stem rot may be seen in the Jute field. To control this pest spray Mancozeb (Dithane M45/Indofil M45) @ 2g/litre of water on fair weather. All the plant protection measure should be taken at clear & sunny days.
- Farmers are advise for 3rd weeding, mulching and simultaneous thinning at 40-50 DAS. Uproot comparatively under growth plants during this time.
- To protect desh jute crop (>4 ft tall) from lodging due to high wind speed, the peripheral jute plants (round the field) need to be tied together by taking 4-5 jute plants in a consecutive manner.
- Apply 80-100 kg urea/ha as top dressing at 45 DAS based on variety.
- Monitor pest and disease incidences and take appropriate plant protection measures.

Rice Aus

- **Stage:** Tillering
- Apply irrigation.

Vegetable

- Because of increase in temperature, there is chance of sucking pest in vegetable crops. To control, application of Malathion 57EC/Dimathoate 40EC @ 1.0ml per litre of water is advised once a week.
- For control of fruit and shoot borer in brinjal under present weather condition, it is advised to apply Cypermethrin 10EC @ 0.5ml/litre or Emamectin Benzoate 5 SP @1.0g/litre or Deltamethrin 2.5EC @ 1.0ml/litre or Diazinon 60EC@ 1.0ml/litre water.
- Monitoring is advised for infestation of leaf hopper in okra during present weather condition. Spraying of Imidacloprid @ 0.5ml/litre or Cypermethrin 10EC @ 1.0ml/litre of water is recommended for control of leaf hopper.
- Apply Irrigation.

Horticultural

- The prevailing weather conditions are favorable for the incidence of fruit fly in mango. Farmers are advised to install 32 Pheromon traps /acre to control the fruit fly.
- There are chances of termite attack in the standing horticultural crops. Hence, to control, apply Chlorpyrephos 20 EC or Fipronil 5 SC @ 2.0 ml/litre for termites.
- It is advised to provide mechanical support in banana and papaya plants to prevent lodging due to gusty wind. Harvest the matured and undamaged banana bunches and papaya fruits under the present weather condition and spray Copper oxychloride @ 3 g per litre of water for control of fungal diseases.
- Apply Irrigation.

Livestock

- Give anthelmintic drugs.
- Use naphthalene or turpentine oil to reduce mosquitoes.
- Feed mineral mixture to increase immunity.
- Give enough cold water to drink.
- Keep the cattle in the safest place to protect them from storms, rain, and lightning.
- Keep enough ventilation in cowsheds.
- Keep the cowshed neat and clean.

Poultry

- Vaccinate if not vaccinated against Ranikhet, cholera, duck plague.
- Remove affected poultry if disease occurs.
- Use clean water or glucose saline in more heat.
- Keep the poultry shed clean and dry.

Fishery

- Maintain pond depth of 1-1.5 m.
- Apply fertilizers (per day- Urea 6gm, TSP 4gm per decimal).
- Give quality food according to the quantity of fish at a specific time and place every day.
- Making your fish food, maintain the percentage of proteins and other ingredients as per the formula.
- Observe the fish for getting fed.
- Monitor the growth of fish and disease by sampling every 15 days.
- If there were fish diseases or less growth, contact immediately the nearest Upazila fisheries office.

Bogura Region (Districts: Bogura, Joypurhat, Pabna, Sirajganj)

Jute

- **Stage:** Vegetative
- It is advised to keep jute field clean and weed free to avoid infestation from insect pests and diseases.

- Keep the drain and irrigation channel weed free and clean to avoid excess water to stand in the plot at growing stages.
- Farmers are advised to do 2nd intercultural operation, mulching and thinning at 20-25 days after sowing (DAS).
- The prevailing weather conditions are congenial for incidence of Field cricket in Jute field. Farmers are advised to spray Chlorpyrephos 20EC @ 2.0 ml/liter water to control insect.
- There is chance of attack of Jute Yellow mite at this stage of Jute crop. Spray Sulphur (Thiovit 80WG) @ 3.5g/liter water.
- At this stage of crop, there is a chance of Jute hairy caterpillar and Jute semi looper attack. To control pest farmers are advised to hand pick the egg mass and destroy them by burning or in kerosinized water. In case of severe attack spray Diazinon 60EC @ 1.0ml/liter of water.
- Present weather conditions and at this stage of crop, the incidence of Seedling blight and Stem rot may be seen in the Jute field. To control this pest spray Mancozeb (Dithane M45/Indofil M45) @ 2g/litre of water on fair weather. All the plant protection measure should be taken at clear & sunny days.
- Farmers are advise for 3rd weeding, mulching and simultaneous thinning at 40-50 DAS. Uproot comparatively under growth plants during this time.
- To protect deshi jute crop (>4 ft tall) from lodging due to high wind speed, the peripheral jute plants (round the field) need to be tied together by taking 4-5 jute plants in a consecutive manner.
- Apply 80-100 kg urea/ha as top dressing at 45 DAS based on variety.
- Monitor pest and disease incidences and take appropriate plant protection measures.

Rice Boro

- **Stage:** Grain Formation
- Arrange proper solarisation within the row by stirring the plants after each 2 rows.
- Remove water from land before pesticide application.
- At this stage of crop and climatic conditions, there is a chance of Rice bug incidences. For Rice bug control spray Carbaryl (85WP) @2g/liter or Chlorpyrephos (20EC) @ 2.0 ml/litre of water. Avoid excess irrigation in the field, in absence of rain otherwise the basal part of the plant will be rotten.
- If any infestation/attack /symptoms of Brown Plant Hoppers (BPH) insects are found, then should go for spray with insecticide like Isoprocarb @ 2.5g or Imidacloprid @ 2.0 ml. per litre water only in clear weather and when there is no forecasting of rains.
- Maintain 2-5 cm land water level.
- Apply irrigation.

Vegetable

- Because of increase in temperature, there is chance of sucking pest in vegetable crops. To control, application of Malathion 57EC/Dimathoate 40EC @ 1.0ml per litre of water is advised once a week.
- For control of fruit and shoot borer in brinjal under present weather condition, it is advised to apply Cypermethrin 10EC @ 0.5ml/litre or Emamectin Benzoate 5 SP @1.0g/litre or Deltamethrin 2.5EC @ 1.0ml/litre or Diazinon 60EC@ 1.0ml/litre water.

- Monitoring is advised for infestation of leaf hopper in okra during present weather condition. Spraying of Imidacloprid @ 0.5ml/litre or Cypermethrin 10EC @ 1.0ml/litre of water is recommended for control of leaf hopper.
- Apply Irrigation.

Horticultural

- The prevailing weather conditions are favorable for the incidence of fruit fly in mango. Farmers are advised to install 32 Pheromon traps /acre to control the fruit fly.
- There are chances of termite attack in the standing horticultural crops. Hence, to control, apply Chlorpyrephos 20 EC or Fipronil 5 SC @ 2.0 ml/litre for termites.
- It is advised to provide mechanical support in banana and papaya plants to prevent lodging due to gusty wind. Harvest the matured and undamaged banana bunches and papaya fruits under the present weather condition and spray Copper oxychloride @ 3 g per litre of water for control of fungal diseases.
- Apply Irrigation.

Livestock

- Give anthelmintic drugs.
- Use naphthalene or turpentine oil to reduce mosquitoes.
- Feed mineral mixture to increase immunity.
- Give enough cold water to drink.
- Keep the cattle in the safest place to protect them from storms, rain, and lightning.
- Keep enough ventilation in cowsheds.
- Keep the cowshed neat and clean.

Poultry

- Vaccinate if not vaccinated against Ranikhet, cholera, duck plague.
- Remove affected poultry if disease occurs.
- Use clean water or glucose saline in more heat.
- Keep the poultry shed clean and dry.

Fishery

- Maintain pond depth of 1-1.5 m.
- Apply fertilizers (per day- Urea 6gm, TSP 4gm per decimal).
- Give quality food according to the quantity of fish at a specific time and place every day.
- Making your fish food, maintain the percentage of proteins and other ingredients as per the formula.
- Observe the fish for getting fed.
- Monitor the growth of fish and disease by sampling every 15 days.
- If there were fish diseases or less growth, contact immediately the nearest Upazila fisheries office.

Rice Aus

- **Stage:** Seedbed
- Take appropriate action for preparation of seedbed for Aus paddy. Prepare the seedbed in high land and also make arrangements for draining out of water and also advised for community based seedbed preparation.
- Construct 40-50 cm. drain in between two seedbeds. This will be used for draining out extra water, irrigation also apply fertilizer/insecticide as and when necessary.
- Advise to use BIRRI recommended varieties of seed. If required, provide proper treatment of seeds so that there will be less chance of diseases. Advise to sow 80-100gm healthy sprouted seed per square meter seed bed.
- Close monitoring is required so that birds should not take away the seed from the seed bed. After 4-5 days of seed germination, it is better to maintain water level 2-3 cm in seed bed so that it can control the weeds and seed damages due to birds.
- If the seedbed becomes yellow, apply urea at the rate of 283 gm per decimal. Apply 400 gm gypsum per decimal if the seedlings are still not recovered after application of urea.
- Present weather condition is congenial for **Bacterial blight** infestation. Control Measure: Fertilizer management, Spray Thiovit+Potash

Vegetable

- Because of increase in temperature, there is chance of sucking pest in vegetable crops. To control, application of Malathion 57EC/Dimathoate 40EC @ 1.0ml per litre of water is advised once a week.
- For control of fruit and shoot borer in brinjal under present weather condition, it is advised to apply Cypermethrin 10EC @ 0.5ml/litre or Emamectin Benzoate 5 SP @1.0g/litre or Deltamethrin 2.5EC @ 1.0ml/litre or Diazinon 60EC@ 1.0ml/litre water.
- Monitoring is advised for infestation of leaf hopper in okra during present weather condition. Spraying of Imidacloprid @ 0.5ml/litre or Cypermethrin 10EC @ 1.0ml/litre of water is recommended for control of leaf hopper.
- Apply light irrigation if required.
- Apply pesticides after the current spell of rainfall.

Horticultural

- The prevailing weather conditions are favorable for the incidence of fruit fly in mango. Farmers are advised to install 32 Pheromon traps /acre to control the fruit fly.
- There are chances of termite attack in the standing horticultural crops. Hence, to control, apply Chlorpyrephos 20 EC or Fipronil 5 SC @ 2.0 ml/litre for termites.
- It is advised to provide mechanical support in banana and papaya plants to prevent lodging due to gusty wind. Harvest the matured and undamaged banana bunches and papaya fruits under the present weather condition and spray Copper oxychloride @ 3 g per litre of water for control of fungal diseases.
- Apply pesticides after the current spell of rainfall.
- Apply light Irrigation.

Livestock

- Give anthelmintic drugs.
- Use naphthalene or turpentine oil to reduce mosquitoes.
- Feed mineral mixture to increase immunity.
- Give enough cold water to drink.
- Keep the cattle in the safest place to protect them from storms, rain, and lightning.
- Keep enough ventilation in cowsheds.
- Keep the cowshed neat and clean.

Poultry

- Vaccinate if not vaccinated against Ranikhet, cholera, duck plague.
- Remove affected poultry if disease occurs.
- Use clean water or glucose saline in more heat.
- Keep the poultry shed clean and dry.

Fishery

- Maintain pond depth of 1-1.5 m.
- Apply fertilizers (per day- Urea 6gm, TSP 4gm per decimal).
- Give quality food according to the quantity of fish at a specific time and place every day.
- Making your fish food, maintain the percentage of proteins and other ingredients as per the formula.
- Observe the fish for getting fed.
- Monitor the growth of fish and disease by sampling every 15 days.
- If there were fish diseases or less growth, contact immediately the nearest Upazila fisheries office.

Rangamati Region (Districts: Rangamati, Khagrachari and Bandarban)

Rice Aus

- **Stage:** Tillering
- Apply irrigation.

Vegetable

- Because of increase in temperature, there is chance of sucking pest in vegetable crops. To control, application of Malathion 57EC/Dimathoate 40EC @ 1.0ml per litre of water is advised once a week.
- For control of fruit and shoot borer in brinjal under present weather condition, it is advised to apply Cypermethrin 10EC @ 0.5ml/litre or Emamectin Benzoate 5 SP @1.0g/litre or Deltamethrin 2.5EC @ 1.0ml/litre or Diazinon 60EC@ 1.0ml/litre water.
- Monitoring is advised for infestation of leaf hopper in okra during present weather condition. Spraying of Imidacloprid @ 0.5ml/litre or Cypermethrin 10EC @ 1.0ml/litre of water is recommended for control of leaf hopper.
- Apply Irrigation.

Horticultural

- The prevailing weather conditions are favorable for the incidence of fruit fly in mango. Farmers are advised to install 32 Pheromon traps /acre to control the fruit fly.
- There are chances of termite attack in the standing horticultural crops. Hence, to control, apply Chlorpyrephos 20 EC or Fipronil 5 SC @ 2.0 ml/litre for termites.
- It is advised to provide mechanical support in banana and papaya plants to prevent lodging due to gusty wind. Harvest the matured and undamaged banana bunches and papaya fruits under the present weather condition and spray Copper oxychloride @ 3 g per litre of water for control of fungal diseases.
- Apply Irrigation.

Livestock

- Give anthelmintic drugs.
- Use naphthalene or turpentine oil to reduce mosquitoes.
- Feed mineral mixture to increase immunity.
- Give enough cold water to drink.
- Keep the cattle in the safest place to protect them from storms, rain, and lightning.
- Keep enough ventilation in cowsheds.
- Keep the cowshed neat and clean.

Poultry

- Vaccinate if not vaccinated against Ranikhet, cholera, duck plague.
- Remove affected poultry if disease occurs.
- Use clean water or glucose saline in more heat.
- Keep the poultry shed clean and dry.

Fishery

- Maintain pond depth of 1-1.5 m.
- Apply fertilizers (per day- Urea 6gm, TSP 4gm per decimal).
- Give quality food according to the quantity of fish at a specific time and place every day.
- Making your fish food, maintain the percentage of proteins and other ingredients as per the formula.
- Observe the fish for getting fed.
- Monitor the growth of fish and disease by sampling every 15 days.
- If there were fish diseases or less growth, contact immediately the nearest Upazila fisheries office.

Barishal Region (Districts: Jhalakati, Patuakhali, Pirujpur, Barguna, Barishal, Bhola)

Jute

- **Stage:** Vegetative
- It is advised to keep jute field clean and weed free to avoid infestation from insect pests and diseases.

- Keep the drain and irrigation channel weed free and clean to avoid excess water to stand in the plot at growing stages.
- Farmers are advised to do 2nd intercultural operation, mulching and thinning at 20-25 days after sowing (DAS).
- The prevailing weather conditions are congenial for incidence of Field cricket in Jute field. Farmers are advised to spray Chlorpyrephos 20EC @ 2.0 ml/liter water to control insect.
- There is chance of attack of Jute Yellow mite at this stage of Jute crop. Spray Sulphur (Thiovit 80WG) @ 3.5g/liter water.
- At this stage of crop, there is a chance of Jute hairy caterpillar and Jute semi looper attack. To control pest farmers are advised to hand pick the egg mass and destroy them by burning or in kerosinized water. In case of severe attack spray Diazinon 60EC @ 1.0ml/liter of water.
- Present weather conditions and at this stage of crop, the incidence of Seedling blight and Stem rot may be seen in the Jute field. To control this pest spray Mancozeb (Dithane M45/Indofil M45) @ 2g/litre of water on fair weather. All the plant protection measure should be taken at clear & sunny days.
- Farmers are advise for 3rd weeding, mulching and simultaneous thinning at 40-50 DAS. Uproot comparatively under growth plants during this time.
- To protect deshi jute crop (>4 ft tall) from lodging due to high wind speed, the peripheral jute plants (round the field) need to be tied together by taking 4-5 jute plants in a consecutive manner.
- Apply 80-100 kg urea/ha as top dressing at 45 DAS based on variety.
- Monitor pest and disease incidences and take appropriate plant protection measures.
- Rain water harvesting should be done for jute retting

Rice Aus

- **Stage:** Tillering
- Apply irrigation if required.

Vegetable

- Because of increase in temperature, there is chance of sucking pest in vegetable crops. To control, application of Malathion 57EC/Dimathoate 40EC @ 1.0ml per litre of water is advised once a week.
- For control of fruit and shoot borer in brinjal under present weather condition, it is advised to apply Cypermethrin 10EC @ 0.5ml/litre or Emamectin Benzoate 5 SP @1.0g/litre or Deltamethrin 2.5EC @ 1.0ml/litre or Diazinon 60EC@ 1.0ml/litre water.
- Monitoring is advised for infestation of leaf hopper in okra during present weather condition. Spraying of Imidacloprid @ 0.5ml/litre or Cypermethrin 10EC @ 1.0ml/litre of water is recommended for control of leaf hopper.
- Apply light irrigation if required.
- Apply pesticides after the current spell of rainfall.

Horticultural

- The prevailing weather conditions are favorable for the incidence of fruit fly in mango. Farmers are advised to install 32 Pheromon traps /acre to control the fruit fly.

- There are chances of termite attack in the standing horticultural crops. Hence, to control, apply Chlorpyrephos 20 EC or Fipronil 5 SC @ 2.0 ml/litre for termites.
- It is advised to provide mechanical support in banana and papaya plants to prevent lodging due to gusty wind. Harvest the matured and undamaged banana bunches and papaya fruits under the present weather condition and spray Copper oxychloride @ 3 g per litre of water for control of fungal diseases.
- Apply pesticides after the current spell of rainfall.
- Apply light Irrigation.

Livestock

- Give anthelmintic drugs.
- Use naphthalene or turpentine oil to reduce mosquitoes.
- Feed mineral mixture to increase immunity.
- Give enough cold water to drink.
- Keep the cattle in the safest place to protect them from storms, rain, and lightning.
- Keep enough ventilation in cowsheds.
- Keep the cowshed neat and clean.

Poultry

- Vaccinate if not vaccinated against Ranikhet, cholera, duck plague.
- Remove affected poultry if disease occurs.
- Use clean water or glucose saline in more heat.
- Keep the poultry shed clean and dry.

Fishery

- Maintain pond depth of 1-1.5 m.
- Apply fertilizers (per day- Urea 6gm, TSP 4gm per decimal).
- Give quality food according to the quantity of fish at a specific time and place every day.
- Making your fish food, maintain the percentage of proteins and other ingredients as per the formula.
- Observe the fish for getting fed.
- Monitor the growth of fish and disease by sampling every 15 days.
- If there were fish diseases or less growth, contact immediately the nearest Upazila fisheries office.

Jashore Region (Districts: Jashore, Kushtia, Chuadanga, Jhenaidah, Meherpur, Magura)

Jute

- **Stage:** Seedling
- Make arrangements for drains around the crop fields as this will help to drain out excess water during heavy rainfall and also help in providing irrigation.
- Farmers are advised to do 1st weeding, mulching and thinning at 10-15 day after sowing (DAS).

- The prevailing weather conditions are congenial for incidence of Field cricket in Jute field. Farmers are advised to spray Chlorpyrephos 20EC @ 2.0 ml/liter water to control insect.
- There is chance of attack of Jute Yellow mite at this stage of Jute crop. Spray Sulphur (Thiovit 80WG) @ 3.5g/liter water.
- Present weather conditions and at this stage of crop, the incidence of Leaf mosaic may be seen in the Jute crops. To control this disease uproot the infected plants and destroy by burning. Also spray Heyzine/Hemithrin @ 1.5ml/litre of water 2-3 times at 7 days interval on fair weather.
- Incidences of Seedling blight disease is expected under the present weather condition and stage of the crop. Apply Dithane M-45 @ 2g/litre water to control the disease.

Rice Boro

- **Stage:** Heading
- Arrange proper solarisation within the row by stirring the plants after each 2 rows.
- Where seedlings are 90-110 days old apply last top dressing with urea and potash.
- There is a chance of attack of insect/pests like, Rice Stem borer, Rice hispa, etc. Constant monitoring is required for its level of incidences. If noticed, collect the adults using hand net & destroy them by burying under soil or by burning. Also apply Carbofuran 5g @10kg / ha. or Diazinon 10g @17kg/ha. for its control.
- There is chance of Blast and brown spot attack due to light fog and raised temperature. . Apply Trooper 6.0g or Nativo 6.0g/litre water twice in 10-15 days.
- Keep the field and irrigation channel weed free.
- Maintain 2-5 cm land water level.
- Apply irrigation.

Vegetable

- Because of increase in temperature, there is chance of sucking pest in vegetable crops. To control, application of Malathion 57EC/Dimathoate 40EC @ 1.0ml per litre of water is advised once a week.
- For control of fruit and shoot borer in brinjal under present weather condition, it is advised to apply Cypermethrin 10EC @ 0.5ml/litre or Emamectin Benzoate 5 SP @1.0g/litre or Deltamethrin 2.5EC @ 1.0ml/litre or Diazinon 60EC@ 1.0ml/litre water.
- Monitoring is advised for infestation of leaf hopper in okra during present weather condition. Spraying of Imidacloprid @ 0.5ml/litre or Cypermethrin 10EC @ 1.0ml/litre of water is recommended for control of leaf hopper.
- Apply Irrigation.

Horticultural

- The prevailing weather conditions are favorable for the incidence of fruit fly in mango. Farmers are advised to install 32 Pheromon traps /acre to control the fruit fly.
- There are chances of termite attack in the standing horticultural crops. Hence, to control, apply Chlorpyrephos 20 EC or Fipronil 5 SC @ 2.0 ml/litre for termites.
- It is advised to provide mechanical support in banana and papaya plants to prevent lodging due to gusty wind. Harvest the matured and undamaged banana bunches and

papaya fruits under the present weather condition and spray Copper oxychloride @ 3 g per litre of water for control of fungal diseases.

- Apply Irrigation.

Livestock

- Give anthelmintic drugs.
- Use naphthalene or turpentine oil to reduce mosquitoes.
- Feed mineral mixture to increase immunity.
- Give enough cold water to drink.
- Keep the cattle in the safest place to protect them from storms, rain, and lightning.
- Keep enough ventilation in cowsheds.
- Keep the cowshed neat and clean.

Poultry

- Vaccinate if not vaccinated against Ranikhet, cholera, duck plague.
- Remove affected poultry if disease occurs.
- Use clean water or glucose saline in more heat.
- Keep the poultry shed clean and dry.

Fishery

- Maintain pond depth of 1-1.5 m.
- Apply fertilizers (per day- Urea 6gm, TSP 4gm per decimal).
- Give quality food according to the quantity of fish at a specific time and place every day.
- Making your fish food, maintain the percentage of proteins and other ingredients as per the formula.
- Observe the fish for getting fed.
- Monitor the growth of fish and disease by sampling every 15 days.
- If there were fish diseases or less growth, contact immediately the nearest Upazila fisheries office.

Faridpur Region (Districts: Faridpur, Rajbari, Madaripur, Shariatpur and Gopalganj)

Jute

- **Stage:** Vegetative
- It is advised to keep jute field clean and weed free to avoid infestation from insect pests and diseases.
- Keep the drain and irrigation channel weed free and clean to avoid excess water to stand in the plot at growing stages.
- Farmers are advised to do 2nd intercultural operation, mulching and thinning at 20-25 days after sowing (DAS).
- The prevailing weather conditions are congenial for incidence of Field cricket in Jute field. Farmers are advised to spray Chlorpyrephos 20EC @ 2.0 ml/liter water to control insect.
- There is chance of attack of Jute Yellow mite at this stage of Jute crop. Spray Sulphur (Thiovit 80WG) @ 3.5g/liter water.

- At this stage of crop, there is a chance of Jute hairy caterpillar and Jute semi looper attack. To control pest farmers are advised to hand pick the egg mass and destroy them by burning or in kerosinized water. In case of severe attack spray Diazinon 60EC @ 1.0ml/liter of water.
- Present weather conditions and at this stage of crop, the incidence of Seedling blight and Stem rot may be seen in the Jute field. To control this pest spray Mancozeb (Dithane M45/Indofil M45) @ 2g/litre of water on fair weather. All the plant protection measure should be taken at clear & sunny days.
- Farmers are advise for 3rd weeding, mulching and simultaneous thinning at 40-50 DAS. Uproot comparatively under growth plants during this time.
- To protect deshi jute crop (>4 ft tall) from lodging due to high wind speed, the peripheral jute plants (round the field) need to be tied together by taking 4-5 jute plants in a consecutive manner.
- Apply 80-100 kg urea/ha as top dressing at 45 DAS based on variety.
- Monitor pest and disease incidences and take appropriate plant protection measures.

Rice Aus

- **Stage:** Tillering
- Apply irrigation.

Vegetable

- Because of increase in temperature, there is chance of sucking pest in vegetable crops. To control, application of Malathion 57EC/Dimathoate 40EC @ 1.0ml per litre of water is advised once a week.
- For control of fruit and shoot borer in brinjal under present weather condition, it is advised to apply Cypermethrin 10EC @ 0.5ml/litre or Emamectin Benzoate 5 SP @1.0g/litre or Deltamethrin 2.5EC @ 1.0ml/litre or Diazinon 60EC@ 1.0ml/litre water.
- Monitoring is advised for infestation of leaf hopper in okra during present weather condition. Spraying of Imidacloprid @ 0.5ml/litre or Cypermethrin 10EC @ 1.0ml/litre of water is recommended for control of leaf hopper.
- Apply Irrigation.

Horticultural

- The prevailing weather conditions are favorable for the incidence of fruit fly in mango. Farmers are advised to install 32 Pheromon traps /acre to control the fruit fly.
- There are chances of termite attack in the standing horticultural crops. Hence, to control, apply Chlorpyrephos 20 EC or Fipronil 5 SC @ 2.0 ml/litre for termites.
- It is advised to provide mechanical support in banana and papaya plants to prevent lodging due to gusty wind. Harvest the matured and undamaged banana bunches and papaya fruits under the present weather condition and spray Copper oxychloride @ 3 g per litre of water for control of fungal diseases.
- Apply Irrigation.

Livestock

- Give anthelmintic drugs.

- Use naphthalene or turpentine oil to reduce mosquitoes.
- Feed mineral mixture to increase immunity.
- Give enough cold water to drink.
- Keep the cattle in the safest place to protect them from storms, rain, and lightning.
- Keep enough ventilation in cowsheds.
- Keep the cowshed neat and clean.

Poultry

- Vaccinate if not vaccinated against Ranikhet, cholera, duck plague.
- Remove affected poultry if disease occurs.
- Use clean water or glucose saline in more heat.
- Keep the poultry shed clean and dry.

Fishery

- Maintain pond depth of 1-1.5 m.
- Apply fertilizers (per day- Urea 6gm, TSP 4gm per decimal).
- Give quality food according to the quantity of fish at a specific time and place every day.
- Making your fish food, maintain the percentage of proteins and other ingredients as per the formula.
- Observe the fish for getting fed.
- Monitor the growth of fish and disease by sampling every 15 days.
- If there were fish diseases or less growth, contact immediately the nearest Upazila fisheries office.

Dhaka Region (Districts: Dhaka, Tangail, Gazipur, Narsingdi, Narayanganj, Munshiganj, Manikgonj)

Jute

- **Stage:** Vegetative
- It is advised to keep jute field clean and weed free to avoid infestation from insect pests and diseases.
- Keep the drain and irrigation channel weed free and clean to avoid excess water to stand in the plot at growing stages.
- Farmers are advised to do 2nd intercultural operation, mulching and thinning at 20-25 days after sowing (DAS).
- The prevailing weather conditions are congenial for incidence of Field cricket in Jute field. Farmers are advised to spray Chlorpyrephos 20EC @ 2.0 ml/liter water to control insect.
- There is chance of attack of Jute Yellow mite at this stage of Jute crop. Spray Sulphur (Thiovit 80WG) @ 3.5g/liter water.
- At this stage of crop, there is a chance of Jute hairy caterpillar and Jute semi looper attack. To control pest farmers are advised to hand pick the egg mass and destroy them by burning or in kerosinized water. In case of severe attack spray Diazinon 60EC @ 1.0ml/liter of water.
- Present weather conditions and at this stage of crop, the incidence of Seedling blight and Stem rot may be seen in the Jute field. To control this pest spray Mancozeb

(Dithane M45/Indofil M45) @ 2g/litre of water on fair weather. All the plant protection measure should be taken at clear & sunny days.

- Farmers are advise for 3rd weeding, mulching and simultaneous thinning at 40-50 DAS. Uproot comparatively under growth plants during this time.
- To protect deshi jute crop (>4 ft tall) from lodging due to high wind speed, the peripheral jute plants (round the field) need to be tied together by taking 4-5 jute plants in a consecutive manner.
- Apply 80-100 kg urea/ha as top dressing at 45 DAS based on variety.
- Monitor pest and disease incidences and take appropriate plant protection measures.

Rice Aus

- **Stage:** Seedbed
- Take appropriate action for preparation of seedbed for Aus paddy. Prepare the seedbed in high land and also make arrangements for draining out of water and also advised for community based seedbed preparation.
- Construct 40-50 cm. drain in between two seedbeds. This will be used for draining out extra water, irrigation also apply fertilizer/insecticide as and when necessary.
- Advise to use BRRI recommended varieties of seed. If required, provide proper treatment of seeds so that there will be less chance of diseases. Advise to sow 80-100gm healthy sprouted seed per square meter seed bed.
- Close monitoring is required so that birds should not take away the seed from the seed bed. After 4-5 days of seed germination, it is better to maintain water level 2-3 cm in seed bed so that it can control the weeds and seed damages due to birds.
- If the seedbed becomes yellow, apply urea at the rate of 283 gm per decimal. Apply 400 gm gypsum per decimal if the seedlings are still not recovered after application of urea.

Vegetable

- Because of increase in temperature, there is chance of sucking pest in vegetable crops. To control, application of Malathion 57EC/Dimathoate 40EC @ 1.0ml per litre of water is advised once a week.
- For control of fruit and shoot borer in brinjal under present weather condition, it is advised to apply Cypermethrin 10EC @ 0.5ml/litre or Emamectin Benzoate 5 SP @1.0g/litre or Deltamethrin 2.5EC @ 1.0ml/litre or Diazinon 60EC@ 1.0ml/litre water.
- Monitoring is advised for infestation of leaf hopper in okra during present weather condition. Spraying of Imidacloprid @ 0.5ml/litre or Cypermethrin 10EC @ 1.0ml/litre of water is recommended for control of leaf hopper.
- Apply Irrigation.

Horticultural

- The prevailing weather conditions are favorable for the incidence of fruit fly in mango. Farmers are advised to install 32 Pheromon traps /acre to control the fruit fly.
- There are chances of termite attack in the standing horticultural crops. Hence, to control, apply Chlorpyrephos 20 EC or Fipronil 5 SC @ 2.0 ml/litre for termites.
- It is advised to provide mechanical support in banana and papaya plants to prevent lodging due to gusty wind. Harvest the matured and undamaged banana bunches and

papaya fruits under the present weather condition and spray Copper oxychloride @ 3 g per litre of water for control of fungal diseases.

- Apply Irrigation.

Livestock

- Give anthelmintic drugs.
- Use naphthalene or turpentine oil to reduce mosquitoes.
- Feed mineral mixture to increase immunity.
- Give enough cold water to drink.
- Keep the cattle in the safest place to protect them from storms, rain, and lightning.
- Keep enough ventilation in cowsheds.
- Keep the cowshed neat and clean.

Poultry

- Vaccinate if not vaccinated against Ranikhet, cholera, duck plague.
- Remove affected poultry if disease occurs.
- Use clean water or glucose saline in more heat.
- Keep the poultry shed clean and dry.

Fishery

- Maintain pond depth of 1-1.5 m.
- Apply fertilizers (per day- Urea 6gm, TSP 4gm per decimal).
- Give quality food according to the quantity of fish at a specific time and place every day.
- Making your fish food, maintain the percentage of proteins and other ingredients as per the formula.
- Observe the fish for getting fed.
- Monitor the growth of fish and disease by sampling every 15 days.
- If there were fish diseases or less growth, contact immediately the nearest Upazila fisheries office.

Chattogram region (Districts: Chattogram, Lakshmipur, Coxsbazar, Noakhali and Feni)

Rice Aus

- **Stage:** Tillering
- Apply irrigation.

Vegetable

- For control of fruit and shoot borer in brinjal under present weather condition, it is advised to apply Cypermethrin 10EC @ 0.5ml/litre or Emamectin Benzoate 5 SP @1.0g/litre or Deltamethrin 2.5EC @ 1.0ml/litre or Diazinon 60EC@ 1.0ml/litre water.

- Monitoring is advised for infestation of leaf hopper in okra during present weather condition. Spraying of Imidacloprid @ 0.5ml/litre or Cypermethrin 10EC @ 1.0ml/litre of water is recommended for control of leaf hopper.
- Apply Irrigation.

Horticultural

- The prevailing weather conditions are favorable for the incidence of fruit fly in mango. Farmers are advised to install 32 Pheromon traps /acre to control the fruit fly.
- There are chances of termite attack in the standing horticultural crops. Hence, to control, apply Chlorpyrephos 20 EC or Fipronil 5 SC @ 2.0 ml/litre for termites.
- It is advised to provide mechanical support in banana and papaya plants to prevent lodging due to gusty wind. Harvest the matured and undamaged banana bunches and papaya fruits under the present weather condition and spray Copper oxychloride @ 3 g per litre of water for control of fungal diseases.
- Apply Irrigation.

Livestock

- Give anthelmintic drugs.
- Use naphthalene or turpentine oil to reduce mosquitoes.
- Feed mineral mixture to increase immunity.
- Give enough cold water to drink.
- Keep the cattle in the safest place to protect them from storms, rain, and lightning.
- Keep enough ventilation in cowsheds.
- Keep the cowshed neat and clean.

Poultry

- Vaccinate if not vaccinated against Ranikhet, cholera, duck plague.
- Remove affected poultry if disease occurs.
- Use clean water or glucose saline in more heat.
- Keep the poultry shed clean and dry.

Fishery

- Maintain pond depth of 1-1.5 m.
- Apply fertilizers (per day- Urea 6gm, TSP 4gm per decimal).
- Give quality food according to the quantity of fish at a specific time and place every day.
- Making your fish food, maintain the percentage of proteins and other ingredients as per the formula.
- Observe the fish for getting fed.
- Monitor the growth of fish and disease by sampling every 15 days.
- If there were fish diseases or less growth, contact immediately the nearest Upazila fisheries office.

Jute

- **Stage:** Vegetative
- It is advised to keep jute field clean and weed free to avoid infestation from insect pests and diseases.
- Keep the drain and irrigation channel weed free and clean to avoid excess water to stand in the plot at growing stages.
- Farmers are advised to do 2nd intercultural operation, mulching and thinning at 20-25 days after sowing (DAS).
- The prevailing weather conditions are congenial for incidence of Field cricket in Jute field. Farmers are advised to spray Chlorpyrephos 20EC @ 2.0 ml/liter water to control insect.
- There is chance of attack of Jute Yellow mite at this stage of Jute crop. Spray Sulphur (Thiovit 80WG) @ 3.5g/liter water.
- At this stage of crop, there is a chance of Jute hairy caterpillar and Jute semi looper attack. To control pest farmers are advised to hand pick the egg mass and destroy them by burning or in kerosinized water. In case of severe attack spray Diazinon 60EC @ 1.0ml/liter of water.
- Present weather conditions and at this stage of crop, the incidence of Seedling blight and Stem rot may be seen in the Jute field. To control this pest spray Mancozeb (Dithane M45/Indofil M45) @ 2g/litre of water on fair weather. All the plant protection measure should be taken at clear & sunny days.
- Farmers are advise for 3rd weeding, mulching and simultaneous thinning at 40-50 DAS. Uproot comparatively under growth plants during this time.
- To protect desh jute crop (>4 ft tall) from lodging due to high wind speed, the peripheral jute plants (round the field) need to be tied together by taking 4-5 jute plants in a consecutive manner.
- Apply 80-100 kg urea/ha as top dressing at 45 DAS based on variety.
- Monitor pest and disease incidences and take appropriate plant protection measures.

Rice Aus

- **Stage:** Seedbed
- Take appropriate action for preparation of seedbed for Aus paddy. Prepare the seedbed in high land and also make arrangements for draining out of water and also advised for community based seedbed preparation.
- Construct 40-50 cm. drain in between two seedbeds. This will be used for draining out extra water, irrigation also apply fertilizer/insecticide as and when necessary.
- Advise to use BRRI recommended varieties of seed. If required, provide proper treatment of seeds so that there will be less chance of diseases. Advise to sow 80-100gm healthy sprouted seed per square meter seed bed.
- Close monitoring is required so that birds should not take away the seed from the seed bed. After 4-5 days of seed germination, it is better to maintain water level 2-3 cm in seed bed so that it can control the weeds and seed damages due to birds.
- If the seedbed becomes yellow, apply urea at the rate of 283 gm per decimal. Apply 400 gm gypsum per decimal if the seedlings are still not recovered after application of urea.

Vegetable

- Because of increase in temperature, there is chance of sucking pest in vegetable crops. To control, application of Malathion 57EC/Dimathoate 40EC @ 1.0ml per litre of water is advised once a week.
- For control of fruit and shoot borer in brinjal under present weather condition, it is advised to apply Cypermethrin 10EC @ 0.5ml/litre or Emamectin Benzoate 5 SP @1.0g/litre or Deltamethrin 2.5EC @ 1.0ml/litre or Diazinon 60EC@ 1.0ml/litre water.
- Monitoring is advised for infestation of leaf hopper in okra during present weather condition. Spraying of Imidacloprid @ 0.5ml/litre or Cypermethrin 10EC @ 1.0ml/litre of water is recommended for control of leaf hopper.
- Apply Irrigation.

Horticultural

- The prevailing weather conditions are favorable for the incidence of fruit fly in mango. Farmers are advised to install 32 Pheromon traps /acre to control the fruit fly.
- There are chances of termite attack in the standing horticultural crops. Hence, to control, apply Chlorpyrephos 20 EC or Fipronil 5 SC @ 2.0 ml/litre for termites.
- It is advised to provide mechanical support in banana and papaya plants to prevent lodging due to gusty wind. Harvest the matured and undamaged banana bunches and papaya fruits under the present weather condition and spray Copper oxychloride @ 3 g per litre of water for control of fungal diseases.
- Apply Irrigation.

Livestock

- Give anthelmintic drugs.
- Use naphthalene or turpentine oil to reduce mosquitoes.
- Feed mineral mixture to increase immunity.
- Give enough cold water to drink.
- Keep the cattle in the safest place to protect them from storms, rain, and lightning.
- Keep enough ventilation in cowsheds.
- Keep the cowshed neat and clean.

Poultry

- Vaccinate if not vaccinated against Ranikhet, cholera, duck plague.
- Remove affected poultry if disease occurs.
- Use clean water or glucose saline in more heat.
- Keep the poultry shed clean and dry.

Fishery

- Maintain pond depth of 1-1.5 m.
- Apply fertilizers (per day- Urea 6gm, TSP 4gm per decimal).
- Give quality food according to the quantity of fish at a specific time and place every day.

- Making your fish food, maintain the percentage of proteins and other ingredients as per the formula.
- Observe the fish for getting fed.
- Monitor the growth of fish and disease by sampling every 15 days.
- If there were fish diseases or less growth, contact immediately the nearest Upazila fisheries office.

Khulna Region (Districts: Khulna, Satkhira, Bagerhat and Narail)

Jute

- **Stage:** Seedling
- Make arrangements for drains around the crop fields as this will help to drain out excess water during heavy rainfall and also help in providing irrigation.
- Farmers are advised to do 1st weeding, mulching and thinning at 10-15 day after sowing (DAS).
- The prevailing weather conditions are congenial for incidence of Field cricket in Jute field. Farmers are advised to spray Chlorpyrephos 20EC @ 2.0 ml/liter water to control insect.
- There is chance of attack of Jute Yellow mite at this stage of Jute crop. Spray Sulphur (Thiovit 80WG) @ 3.5g/liter water.
- Present weather conditions and at this stage of crop, the incidence of Leaf mosaic may be seen in the Jute crops. To control this disease uproot the infected plants and destroy by burning. Also spray Heyzine/Hemithrin @ 1.5ml/litre of water 2-3 times at 7 days interval on fair weather.
- Incidences of Seedling blight disease is expected under the present weather condition and stage of the crop. Apply Dithane M-45 @ 2g/litre water to control the disease.

Rice Aus

- **Stage:** Seedbed
- Take appropriate action for preparation of seedbed for Aus paddy. Prepare the seedbed in high land and also make arrangements for draining out of water and also advised for community based seedbed preparation.
- Construct 40-50 cm. drain in between two seedbeds. This will be used for draining out extra water, irrigation also apply fertilizer/insecticide as and when necessary.
- Advise to use BRRI recommended varieties of seed. If required, provide proper treatment of seeds so that there will be less chance of diseases. Advise to sow 80-100gm healthy sprouted seed per square meter seed bed.
- Close monitoring is required so that birds should not take away the seed from the seed bed. After 4-5 days of seed germination, it is better to maintain water level 2-3 cm in seed bed so that it can control the weeds and seed damages due to birds.
- If the seedbed becomes yellow, apply urea at the rate of 283 gm per decimal. Apply 400 gm gypsum per decimal if the seedlings are still not recovered after application of urea.

Rice Boro

- **Stage:** Heading
- Arrange proper solarisation within the row by stirring the plants after each 2 rows.

- Where seedlings are 90-110 days old apply last top dressing with urea and potash.
- There is a chance of attack of insect/pests like, Rice Stem borer, Rice hispa, etc. Constant monitoring is required for its level of incidences. If noticed, collect the adults using hand net & destroy them by burying under soil or by burning. Also apply Carbofuran 5g @10kg / ha. or Diazinon 10g @17kg/ha. for its control.
- There is chance of Blast and brown spot attack due to light fog and raised temperature. . Apply Trooper 6.0g or Nativo 6.0g/litre water twice in 10-15 days.
- Keep the field and irrigation channel weed free.
- Maintain 2-5 cm land water level.
- Apply irrigation.

Vegetable

- Because of increase in temperature, there is chance of sucking pest in vegetable crops. To control, application of Malathion 57EC/Dimathoate 40EC @ 1.0ml per litre of water is advised once a week.
- For control of fruit and shoot borer in brinjal under present weather condition, it is advised to apply Cypermethrin 10EC @ 0.5ml/litre or Emamectin Benzoate 5 SP @1.0g/litre or Deltamethrin 2.5EC @ 1.0ml/litre or Diazinon 60EC@ 1.0ml/litre water.
- Monitoring is advised for infestation of leaf hopper in okra during present weather condition. Spraying of Imidacloprid @ 0.5ml/litre or Cypermethrin 10EC @ 1.0ml/litre of water is recommended for control of leaf hopper.
- Apply Irrigation.

Horticultural

- The prevailing weather conditions are favorable for the incidence of fruit fly in mango. Farmers are advised to install 32 Pheromon traps /acre to control the fruit fly.
- There are chances of termite attack in the standing horticultural crops. Hence, to control, apply Chlorpyrephos 20 EC or Fipronil 5 SC @ 2.0 ml/litre for termites.
- It is advised to provide mechanical support in banana and papaya plants to prevent lodging due to gusty wind. Harvest the matured and undamaged banana bunches and papaya fruits under the present weather condition and spray Copper oxychloride @ 3 g per litre of water for control of fungal diseases.
- Apply Irrigation.

Livestock

- Give anthelmintic drugs.
- Use naphthalene or turpentine oil to reduce mosquitoes.
- Feed mineral mixture to increase immunity.
- Give enough cold water to drink.
- Keep the cattle in the safest place to protect them from storms, rain, and lightning.
- Keep enough ventilation in cowsheds.
- Keep the cowshed neat and clean.

Poultry

- Vaccinate if not vaccinated against Ranikhet, cholera, duck plague.

- Remove affected poultry if disease occurs.
- Use clean water or glucose saline in more heat.
- Keep the poultry shed clean and dry.

Fishery

- Maintain pond depth of 1-1.5 m.
- Apply fertilizers (per day- Urea 6gm, TSP 4gm per decimal).
- Give quality food according to the quantity of fish at a specific time and place every day.
- Making your fish food, maintain the percentage of proteins and other ingredients as per the formula.
- Observe the fish for getting fed.
- Monitor the growth of fish and disease by sampling every 15 days.
- If there were fish diseases or less growth, contact immediately the nearest Upazila fisheries office.

Mymensingh Region (Districts: Mymensingh, Kishoregonj, Jamalpur, Netrokona, Sherpur)

Jute

- **Stage:** Vegetative
- It is advised to keep jute field clean and weed free to avoid infestation from insect pests and diseases.
- Keep the drain and irrigation channel weed free and clean to avoid excess water to stand in the plot at growing stages.
- Farmers are advised to do 2nd intercultural operation, mulching and thinning at 20-25 days after sowing (DAS).
- The prevailing weather conditions are congenial for incidence of Field cricket in Jute field. Farmers are advised to spray Chlorpyrephos 20EC @ 2.0 ml/liter water to control insect.
- There is chance of attack of Jute Yellow mite at this stage of Jute crop. Spray Sulphur (Thiovit 80WG) @ 3.5g/liter water.
- At this stage of crop, there is a chance of Jute hairy caterpillar and Jute semi looper attack. To control pest farmers are advised to hand pick the egg mass and destroy them by burning or in kerosinized water. In case of severe attack spray Diazinon 60EC @ 1.0ml/liter of water.
- Present weather conditions and at this stage of crop, the incidence of Seedling blight and Stem rot may be seen in the Jute field. To control this pest spray Mancozeb (Dithane M45/Indofil M45) @ 2g/litre of water on fair weather. All the plant protection measure should be taken at clear & sunny days.
- Farmers are advise for 3rd weeding, mulching and simultaneous thinning at 40-50 DAS. Uproot comparatively under growth plants during this time.
- To protect deshi jute crop (>4 ft tall) from lodging due to high wind speed, the peripheral jute plants (round the field) need to be tied together by taking 4-5 jute plants in a consecutive manner.
- Apply 80-100 kg urea/ha as top dressing at 45 DAS based on variety.
- Monitor pest and disease incidences and take appropriate plant protection measures.

Rice Aus

- **Stage:** Seedbed
- Take appropriate action for preparation of seedbed for Aus paddy. Prepare the seedbed in high land and also make arrangements for draining out of water and also advised for community based seedbed preparation.
- Construct 40-50 cm. drain in between two seedbeds. This will be used for draining out extra water, irrigation also apply fertilizer/insecticide as and when necessary.
- Advise to use BRRI recommended varieties of seed. If required, provide proper treatment of seeds so that there will be less chance of diseases. Advise to sow 80-100gm healthy sprouted seed per square meter seed bed.
- Close monitoring is required so that birds should not take away the seed from the seed bed. After 4-5 days of seed germination, it is better to maintain water level 2-3 cm in seed bed so that it can control the weeds and seed damages due to birds.
- If the seedbed becomes yellow, apply urea at the rate of 283 gm per decimal. Apply 400 gm gypsum per decimal if the seedlings are still not recovered after application of urea.

Vegetable

- Because of increase in temperature, there is chance of sucking pest in vegetable crops. To control, application of Malathion 57EC/Dimathoate 40EC @ 1.0ml per litre of water is advised once a week.
- For control of fruit and shoot borer in brinjal under present weather condition, it is advised to apply Cypermethrin 10EC @ 0.5ml/litre or Emamectin Benzoate 5 SP @1.0g/litre or Deltamethrin 2.5EC @ 1.0ml/litre or Diazinon 60EC@ 1.0ml/litre water.
- Monitoring is advised for infestation of leaf hopper in okra during present weather condition. Spraying of Imidacloprid @ 0.5ml/litre or Cypermethrin 10EC @ 1.0ml/litre of water is recommended for control of leaf hopper.
- Apply Irrigation.

Horticultural

- The prevailing weather conditions are favorable for the incidence of fruit fly in mango. Farmers are advised to install 32 Pheromon traps /acre to control the fruit fly.
- There are chances of termite attack in the standing horticultural crops. Hence, to control, apply Chlorpyrephos 20 EC or Fipronil 5 SC @ 2.0 ml/litre for termites.
- It is advised to provide mechanical support in banana and papaya plants to prevent lodging due to gusty wind. Harvest the matured and undamaged banana bunches and papaya fruits under the present weather condition and spray Copper oxychloride @ 3 g per litre of water for control of fungal diseases.
- Apply Irrigation.

Livestock

- Give anthelmintic drugs.
- Use naphthalene or turpentine oil to reduce mosquitoes.
- Feed mineral mixture to increase immunity.
- Give enough cold water to drink.

- Keep the cattle in the safest place to protect them from storms, rain, and lightning.
- Keep enough ventilation in cowsheds.
- Keep the cowshed neat and clean.

Poultry

- Vaccinate if not vaccinated against Ranikhet, cholera, duck plague.
- Remove affected poultry if disease occurs.
- Use clean water or glucose saline in more heat.
- Keep the poultry shed clean and dry.

Fishery

- Maintain pond depth of 1-1.5 m.
- Apply fertilizers (per day- Urea 6gm, TSP 4gm per decimal).
- Give quality food according to the quantity of fish at a specific time and place every day.
- Making your fish food, maintain the percentage of proteins and other ingredients as per the formula.
- Observe the fish for getting fed.
- Monitor the growth of fish and disease by sampling every 15 days.
- If there were fish diseases or less growth, contact immediately the nearest Upazila fisheries office.