



# NATIONAL AGROMETEOROLOGICAL ADVISORY SERVICE BULLETIN

**26 April 2023 (THURSDAY)  
[FOR THE PERIOD 26.04.2023 – 30.04.2023]**



#### DISCLAIMER

Under the Agro-meteorological Information System Development Project, Agromet Advisory Service Bulletins at National & Sixty Four (64) districts have been prepared on experimental basis. These bulletins are being displayed through the website of Department of Agricultural Extension for valuable comments/ suggestions from all concerned.

#### ISSUED BY

Agro-Meteorological Information Systems  
Development Project  
Department of Agricultural Extension (DAE)  
Ministry of Agriculture  
In collaboration with Bangladesh  
Meteorological Department

## Realized Weather at different locations in the country

**Rainfall for last 24 hours (till 06 AM on 26 April 2023) and maximum temperature on 25 April and minimum temperature on 26 April 2023 is given below:**

Name of Divisions	Name of Stations	Rain fall (mm)	Max. Temp (°C)	Min. Temp (°C)	Name of Divisions	Name of Stations	Rain fall (mm)	Max. Temp (°C)	Min. Temp (°C)
Dhaka	Dhaka	00	37.5	26.4	Chattogram	Chattogram	00	36.4	26.2
	Tangail	00	36.0	24.0		Sandwip	00	36.7	23.0
	Faridpur	00	36.5	23.0		Sitakunda	00	36.5	22.0
	Madaripur	00	36.0	22.8		Rangamati	00	37.0	20.0
	Gopalganj	00	36.0	23.0		Cumilla	00	36.8	22.4
	Nikli	00	36.0	22.2		Chandpur	00	36.5	25.5
Rajshahi	Rajshahi	00	36.5	22.5		M. Court	00	36.0	24.0
	Ishurdi	17	36.8	21.5		Feni	00	36.6	22.2
	Bogura	00	35.5	24.5		Hatiya	00	36.0	23.5
	Badalgachhi	00	35.2	21.5		Cox's Bazar	00	38.1	26.2
	Tarash	00	34.5	22.4		Kutubdia	00	35.6	24.5
Rangpur	Rangpur	00	34.8	23.0		Teknaf	00	35.0	25.1
	Dinajpur	00	35.2	21.0		Bandarban	00	37.7	23.2
	Sayedpur	00	35.4	21.3		Khulna	Khulna	00	36.5
	Tetulia	00	34.5	18.8	Mongla		00	36.5	24.8
	Dimla	00	35.0	20.0	Satkhira		00	35.2	24.7
	Rajarhat	00	34.7	20.5	Jashore		00	37.0	23.0
Mymensingh	Mymensingh	00	35.0	23.5	Chuadanga		03	36.8	21.5
	Netrokona	00	34.5	23.0	Kumarkhali		00	35.7	22.8
Sylhet	Sylhet	00	35.4	23.9	Barishal	Barishal	00	35.6	22.5
	Srimangal	00	35.1	21.7		Patuakhali	00	36.1	24.5
						Khepupara	00	37.5	25.0
					Bhola	00	36.2	23.0	

### Highlights:

- Country average bright sunshine hour was 7.46 hours per day during last week.
- Country average free water loss during the previous week was 4.54 mm per day.

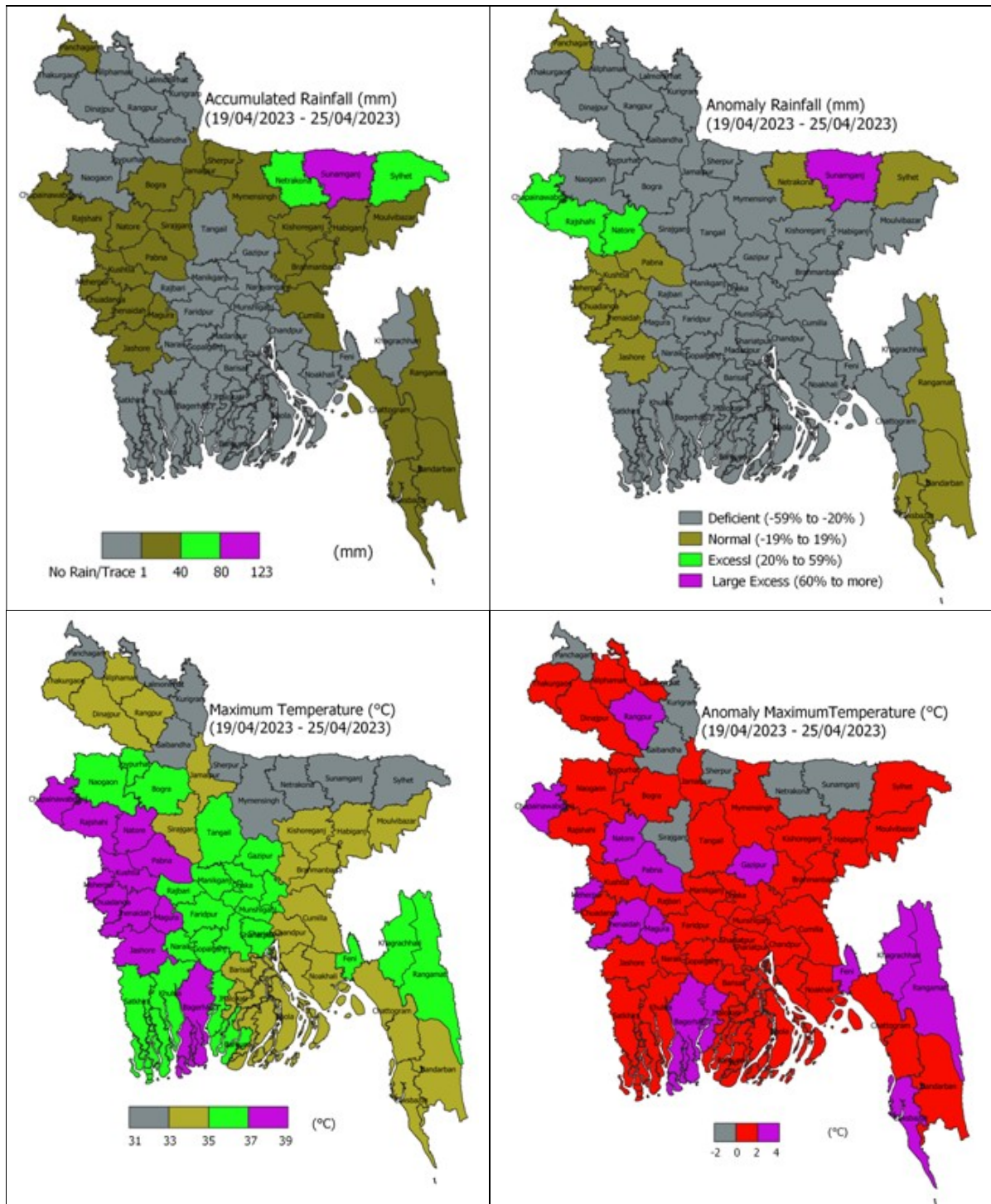
### Weather Forecast Valid for 24 Hours commencing 06 PM Today:

**Forecast:** Rain/thunder showers accompanied by temporary gusty/squally wind is likely to occur at one or two places over Rajshahi, Rangpur, Dhaka, Khulna, Mymensingh & Sylhet divisions with hails at isolated places. Weather may remain mainly dry with temporary partly cloudy sky elsewhere over the country.

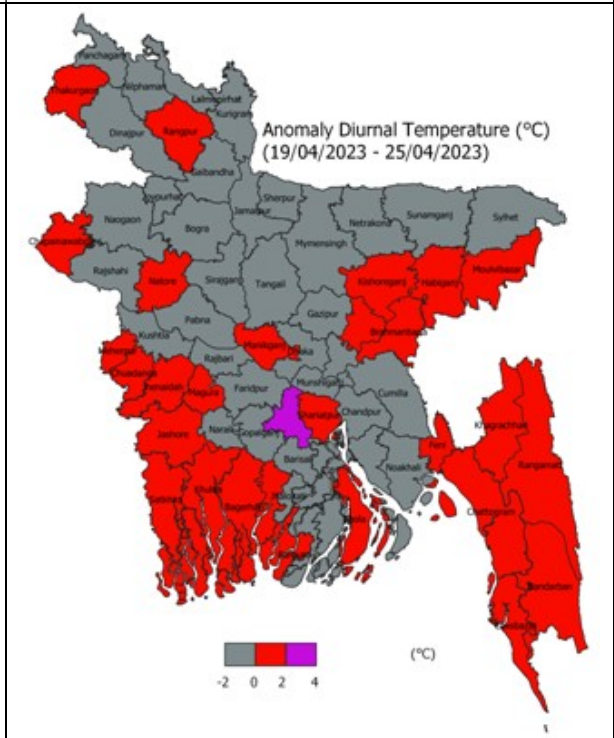
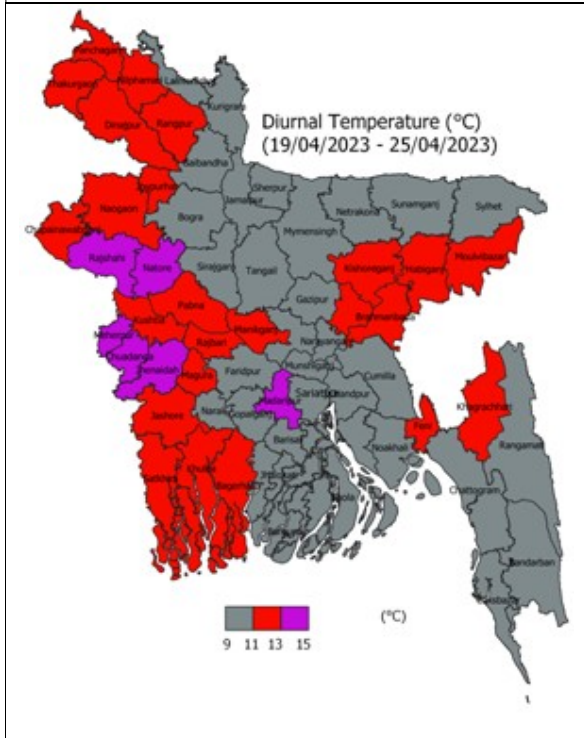
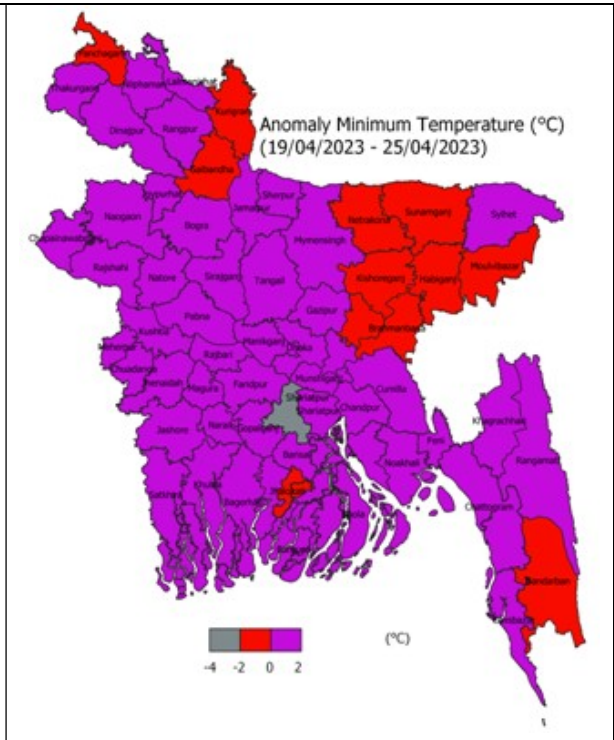
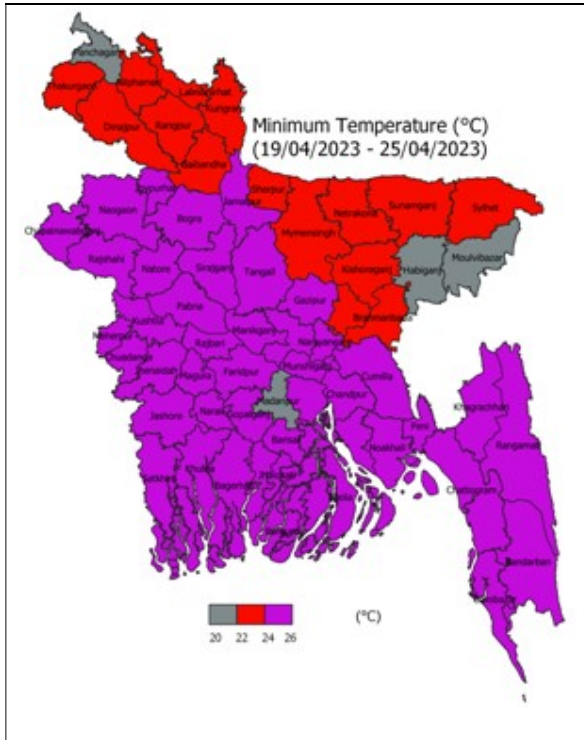
**Heat Wave:** Mild heat wave is sweeping over Dhaka, Khulna & Chattogram divisions and the districts of Rajshahi, Pabna, Patuakhali & Bhola and it may continue.

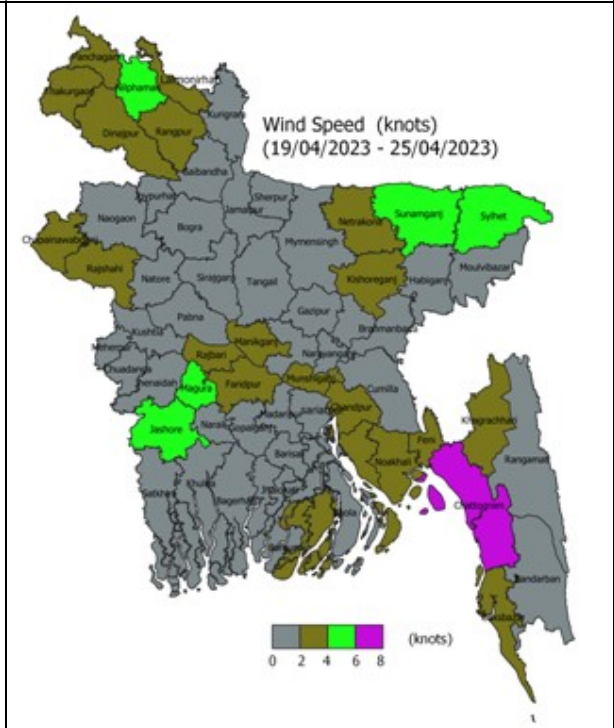
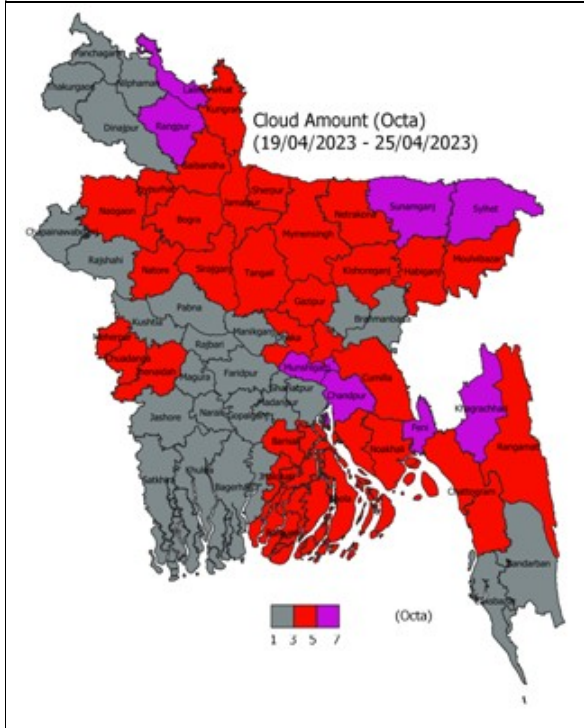
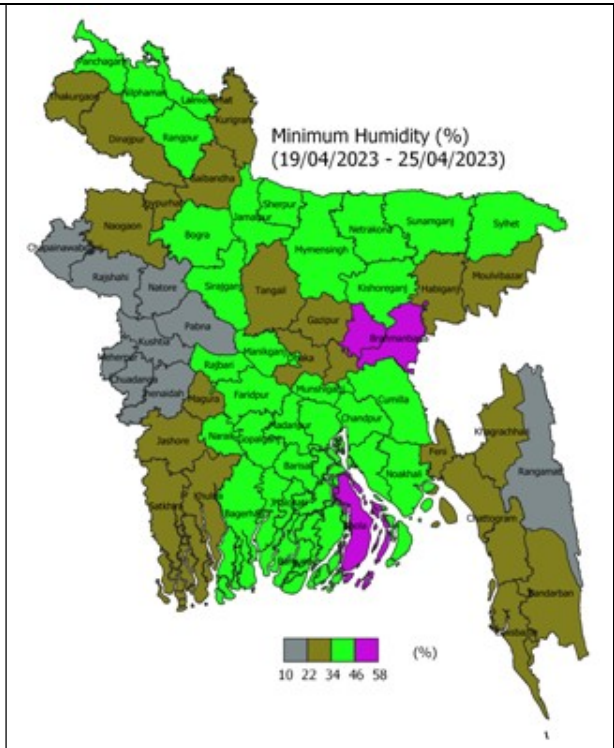
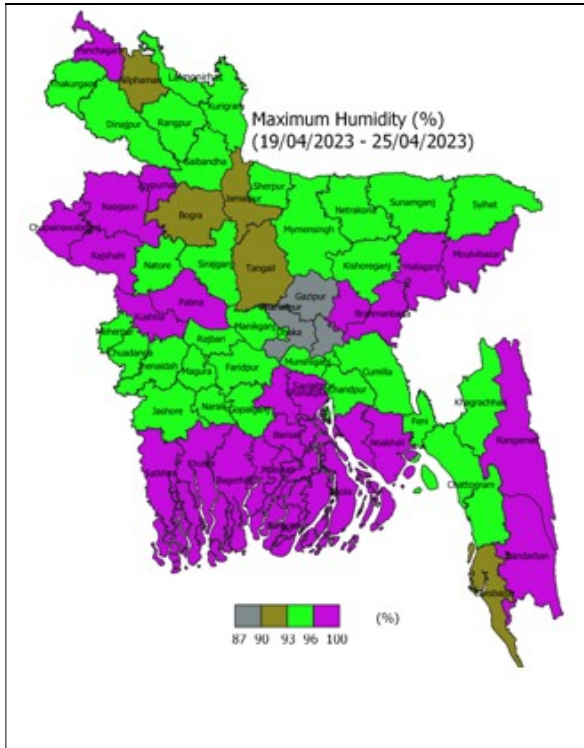
**Temperature:** Day temperature may remain nearly unchanged and night temperature may rise slightly over the country.

### Spatial Distribution of weather parameters for the Week ending on 25 April 2023







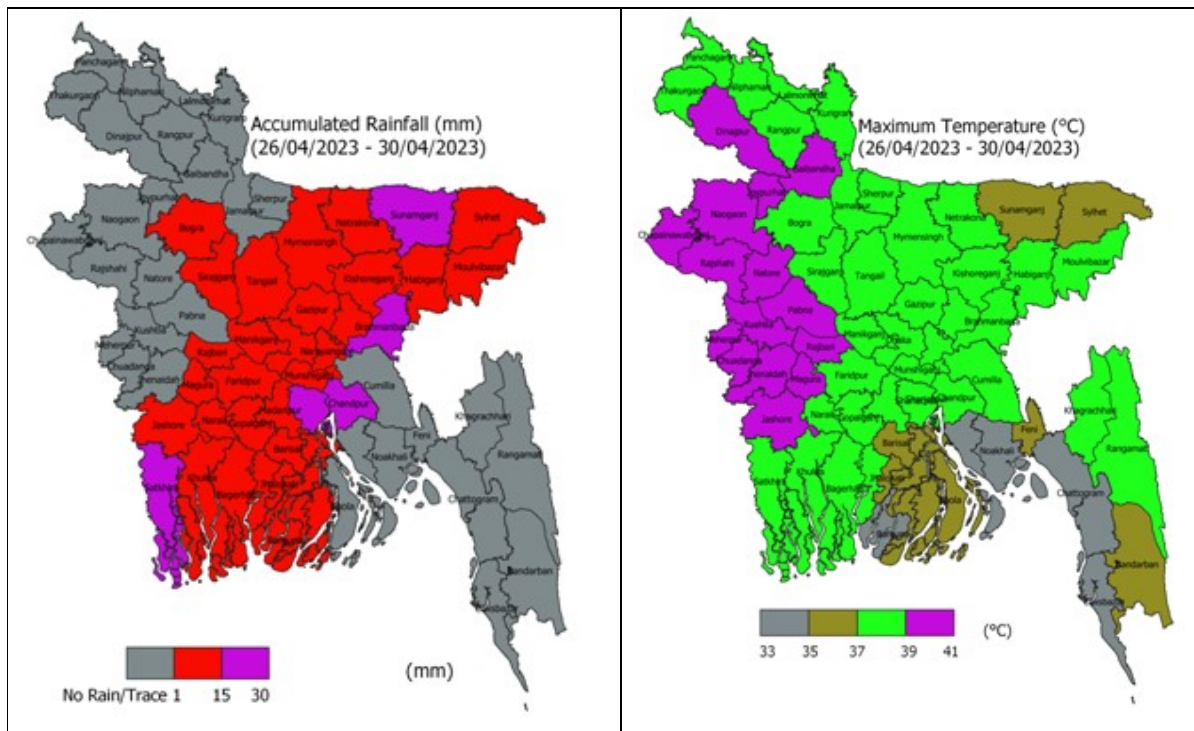


## Weather Forecast and Advisory for the Period of 24.04.2023 to 01.05.2023

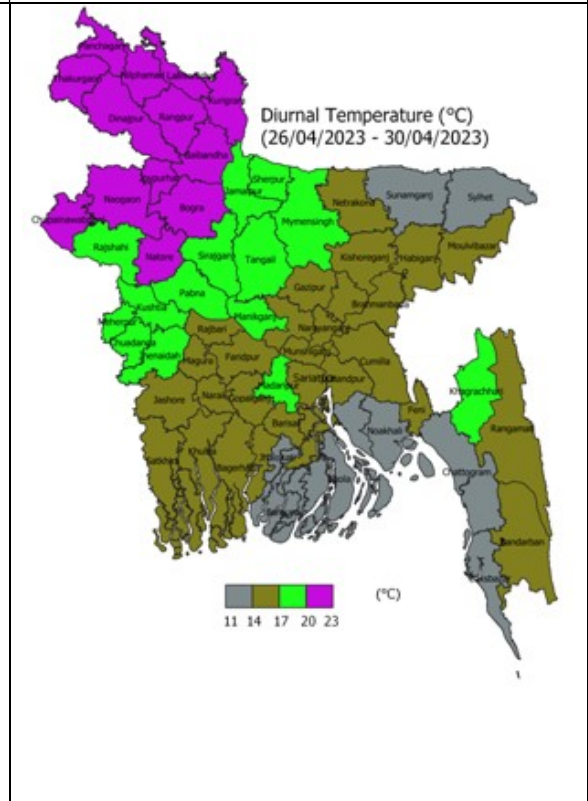
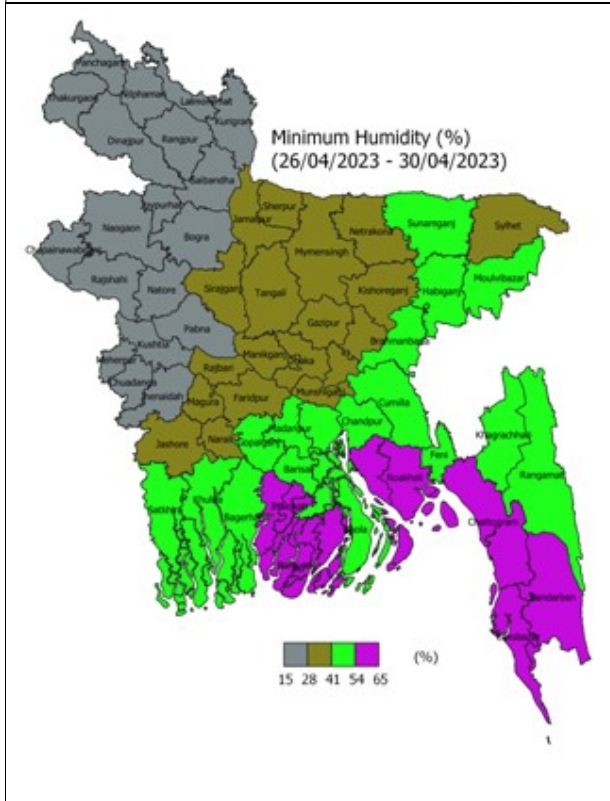
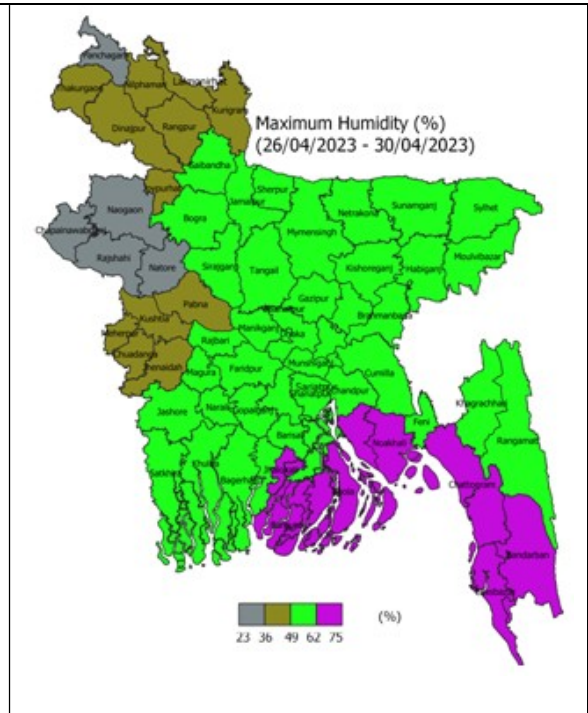
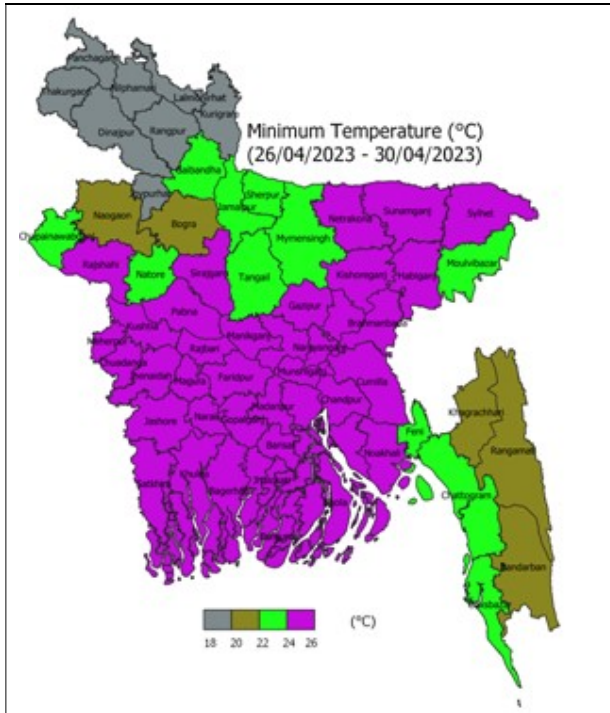
Bright sunshine hour is likely to be from 7.00 to 9.00 hours per day during this week. Average free water loss is likely to be from 3.00 to 5.00 mm per day during this week.

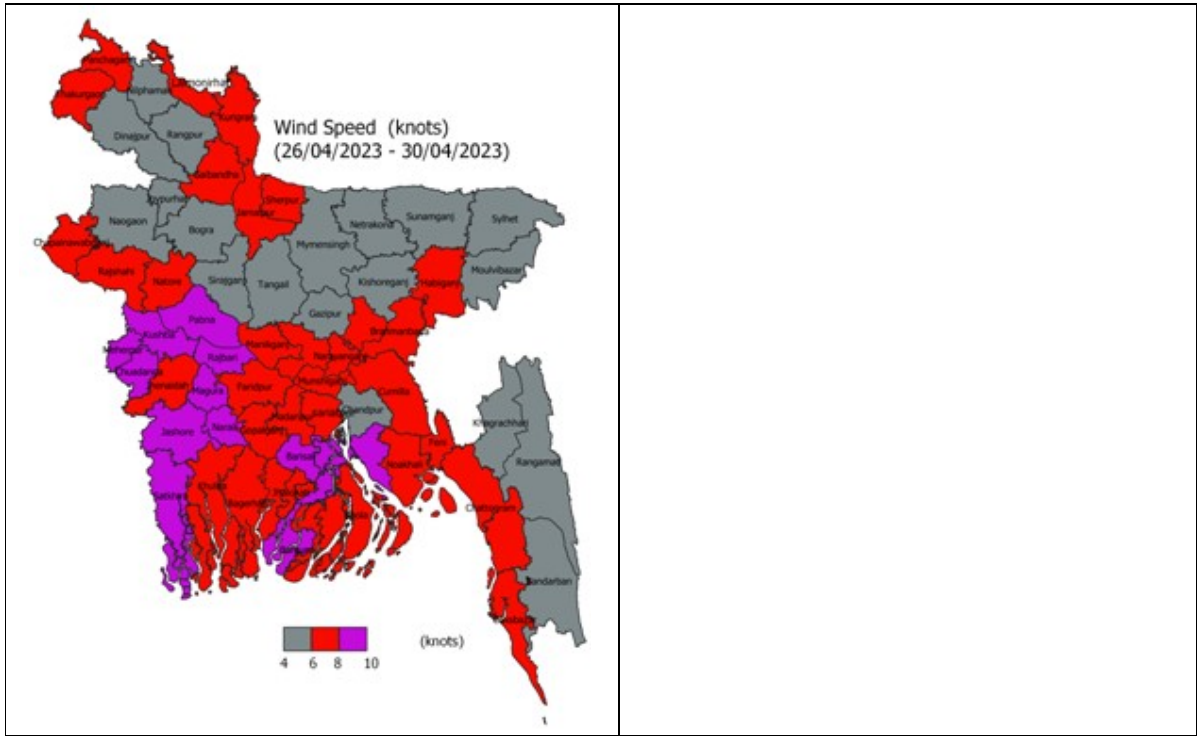
- Rain/Thunder showers accompanied by temporary gusty/Squally wind with lightning flashes is likely to occur at one or two places (1%-25% area) over Rangpur, Rajshahi, Mymensingh, Sylhet, Dhaka, Khulna & Chattogram divisions. Weather may remain mainly dry with temporary partly cloudy sky elsewhere over the country during 1<sup>st</sup> half of this period.
- Rain/Thunder showers accompanied by temporary gusty/Squally wind with lightning flashes and isolated hails is likely to occur at most places (76%-100% area) over Sylhet division & at many places (51%-75% area) over Dhaka, Mymensingh, Khulna & Barishal divisions with moderately heavy(23-43 mm/day) to heavy (44-88 mm/day) falls at places and at a few places (26%-50% area) over Rajshahi, Rangpur & Chattogram divisions during 2<sup>nd</sup> half of this period.
- Day and Night temperature may rise over the country during 1<sup>st</sup> half of this period; Day and Night temperature may fall gradually during 2<sup>nd</sup> half of this period.
- Mild to moderate heat wave may sweep at places over Rajshahi & Khulna divisions and mild heat wave may sweep at places over Rangpur, Mymensingh, Sylhet, Dhaka, Barishal & Chattogram divisions during 1<sup>st</sup> half of this period. Heat wave condition is likely to reduce over the country during 2<sup>nd</sup> half of this period.

### **District Wise Quantitative Weather Forecast for next Five days from 26 April- 30 April 2023**









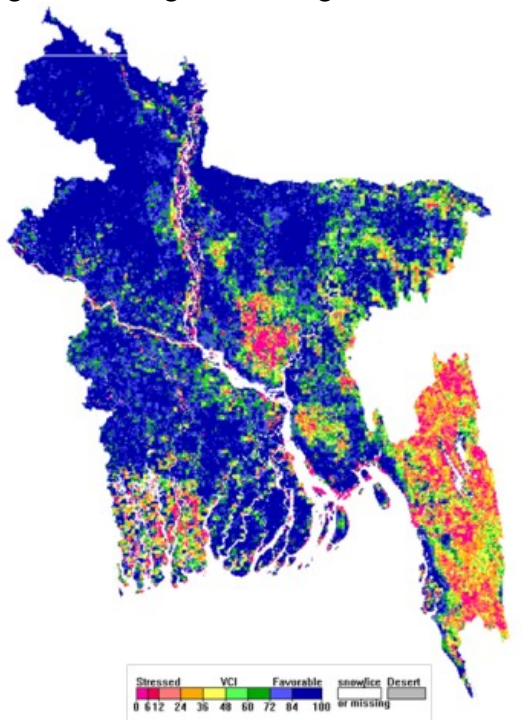


### Different Satellite Products over Bangladesh

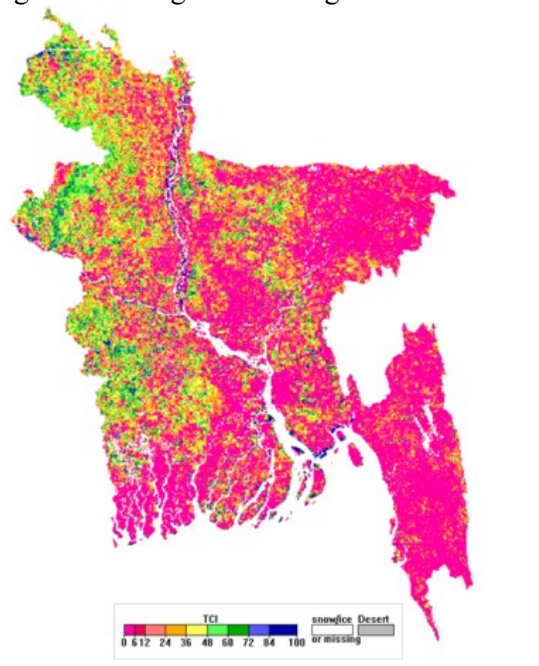
NOAA/VIIRS BLENDED NDVI composite for the week No. 16 (16 April-22 April) over Agricultural regions of Bangladesh



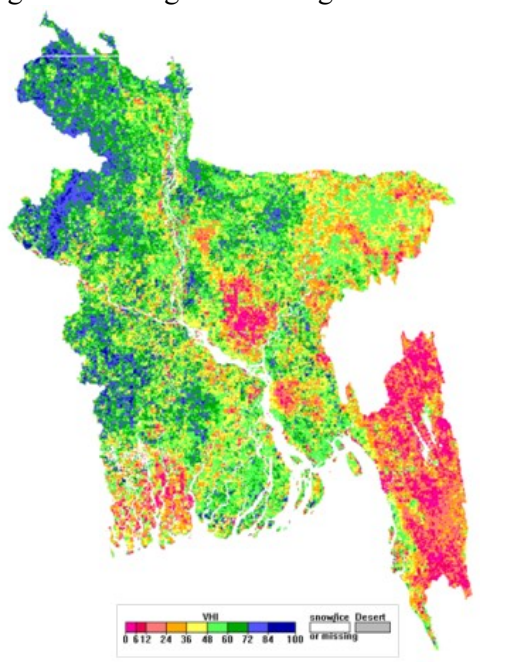
NOAA/ AVHRR BLENDED VCI composite for the week No. 16 (16 April-22 April) over Agricultural regions of Bangladesh



NOAA/ AVHRR BLENDED TCI composite for the week No. 16 (16 April-22 April) over Agricultural regions of Bangladesh



NOAA/ AVHRR BLENDED VHI composite for the week No. 16 (16 April-22 April) over Agricultural regions of Bangladesh



## Agromet Advisories

According to the medium range forecast, light to moderate rainfall is likely to occur in some districts of the country in the next five days. The following agromet advisories are provided in these circumstances:

### Rajshahi Region (Districts: Rajshahi, Chapainawabganj, Naogaon and Natore)

#### Jute

- **Stage:** Vegetative
- It is advised to keep jute field clean and weed free to avoid infestation from insect pests and diseases.
- Keep the drain and irrigation channel weed free and clean to avoid excess water to stand in the plot at growing stages.
- The prevailing weather conditions are congenial for incidence of Field cricket in Jute field. Farmers are advised to spray Chlorpyrephos 20EC @ 2.0 ml/liter water to control insect.
- There is chance of attack of Jute Yellow mite at this stage of Jute crop. Spray Sulphur (Thiovit 80WG) @ 3.5g/liter water.
- At this stage of crop, there is a chance of Jute hairy caterpillar and Jute semi looper attack. To control pest farmers are advised to hand pick the egg mass and destroy them by burning or in kerosinized water. In case of severe attack spray Diazinon 60EC @ 1.0ml/liter of water.
- Present weather conditions and at this stage of crop, the incidence of Seedling blight and Stem rot may be seen in the Jute field. To control this pest spray Mancozeb (Dithane M45/Indofil M45) @ 2g/litre of water on fair weather. All the plant protection measure should be taken at clear & sunny days.
- Farmers are advise for 3rd weeding, mulching and simultaneous thinning at 40-50 DAS. Uproot comparatively under growth plants during this time.
- To protect deshi jute crop (>4 ft tall) from lodging due to high wind speed, the peripheral jute plants (round the field) need to be tied together by taking 4-5 jute plants in a consecutive manner.
- Monitor pest and disease incidences and take appropriate plant protection measures.
- Rain water harvesting should be done for jute retting
- Present weather condition is congenial for **Stem rot** infestation. Spray of Mancozeb @ 2gm/L Water

#### Rice Boro

- **Stage:** Maturity to Harvesting
- Harvest the crop. After the harvest, immediately keep it in a safe and dry place for drying of grains.
- Drain out the water from the land 15 days before harvest.

#### Vegetable

- Because of increase in temperature, there is chance of sucking pest in vegetable crops. To control, application of Malathion 57EC/Dimathoate 40EC @ 1.0ml per litre of water is advised once a week.

- For control of fruit and shoot borer in brinjal under present weather condition, it is advised to apply Cypermethrin 10EC @ 0.5ml/litre or Emamectin Benzoate 5 SP @1.0g/litre or Deltamethrin 2.5EC @ 1.0ml/litre or Diazinon 60EC@ 1.0ml/litre water.
- Monitoring is advised for infestation of leaf hopper in okra during present weather condition. Spraying of Imidacloprid @ 0.5ml/litre or Cypermethrin 10EC @ 1.0ml/litre of water is recommended for control of leaf hopper.
- Apply light irrigation if required.

### **Horticultural**

- The prevailing weather conditions are favorable for the incidence of fruit fly in mango. Farmers are advised to install 32 Pheromon traps /acre to control the fruit fly.
- There are chances of termite attack in the standing horticultural crops. Hence, to control, apply Chlorpyrephos 20 EC or Fipronil 5 SC @ 2.0 ml/litre for termites.
- It is advised to provide mechanical support in banana and papaya plants to prevent lodging due to gusty wind. Harvest the matured and undamaged banana bunches and papaya fruits under the present weather condition and spray Copper oxychloride @ 3 g per litre of water for control of fungal diseases.
- Apply light Irrigation.

### **Livestock**

- Give anthelmintic drugs.
- Use naphthalene or turpentine oil to reduce mosquitoes.
- Feed mineral mixture to increase immunity.
- Give enough cold water to drink.
- Keep the cattle in the safest place to protect them from storms, rain, and lightning.
- Keep enough ventilation in cowsheds.
- Keep the cowshed neat and clean.

### **Poultry**

- Vaccinate if not vaccinated against Ranikhet, cholera, duck plague.
- Remove affected poultry if disease occurs.
- Use clean water or glucose saline in more heat.
- Keep the poultry shed clean and dry.

### **Fishery**

- Maintain pond depth of 1-1.5 m.
- Apply fertilizers (per day- Urea 6gm, TSP 4gm per decimal).
- Give quality food according to the quantity of fish at a specific time and place every day.
- Making your fish food, maintain the percentage of proteins and other ingredients as per the formula.
- Observe the fish for getting fed.
- Monitor the growth of fish and disease by sampling every 15 days.
- If there were fish diseases or less growth, contact immediately the nearest Upazila fisheries office.



## **Jute**

- **Stage:** Vegetative
- It is advised to keep jute field clean and weed free to avoid infestation from insect pests and diseases.
- Keep the drain and irrigation channel weed free and clean to avoid excess water to stand in the plot at growing stages.
- The prevailing weather conditions are congenial for incidence of Field cricket in Jute field. Farmers are advised to spray Chlorpyrephos 20EC @ 2.0 ml/liter water to control insect.
- There is chance of attack of Jute Yellow mite at this stage of Jute crop. Spray Sulphur (Thiovit 80WG) @ 3.5g/liter water.
- At this stage of crop, there is a chance of Jute hairy caterpillar and Jute semi looper attack. To control pest farmers are advised to hand pick the egg mass and destroy them by burning or in kerosinized water. In case of severe attack spray Diazinon 60EC @ 1.0ml/liter of water.
- Present weather conditions and at this stage of crop, the incidence of Seedling blight and Stem rot may be seen in the Jute field. To control this pest spray Mancozeb (Dithane M45/Indofil M45) @ 2g/litre of water on fair weather. All the plant protection measure should be taken at clear & sunny days.
- Farmers are advise for 3rd weeding, mulching and simultaneous thinning at 40-50 DAS. Uproot comparatively under growth plants during this time.
- To protect deshi jute crop (>4 ft tall) from lodging due to high wind speed, the peripheral jute plants (round the field) need to be tied together by taking 4-5 jute plants in a consecutive manner.
- Monitor pest and disease incidences and take appropriate plant protection measures.
- Present weather condition is congenial for **Stem rot** infestation. Spray of Mancozeb @ 2gm/L Water

## **Rice Aus**

- **Stage:** Tillering
- Apply irrigation.
- Present weather condition is congenial for **Yellow Stem borer** infestation. To control of insects like steam borer gall midge and white & brown hopper apply Corbofuron 3 G@33 kg or phorat 10G @ 10 kg per /hectare and for cut worm Clorpyrifos or Daiclorovash.
- Present weather condition is congenial for **Gall midge** infestation. Control measure: Carbofuran@10kg per ha.

## **Vegetable**

- Because of increase in temperature, there is chance of sucking pest in vegetable crops. To control, application of Malathion 57EC/Dimathoate 40EC @ 1.0ml per litre of water is advised once a week.
- For control of fruit and shoot borer in brinjal under present weather condition, it is advised to apply Cypermethrin 10EC @ 0.5ml/litre or Emamectin Benzoate 5 SP

@1.0g/litre or Deltamethrin 2.5EC @ 1.0ml/litre or Diazinon 60EC@ 1.0ml/litre water.

- Monitoring is advised for infestation of leaf hopper in okra during present weather condition. Spraying of Imidacloprid @ 0.5ml/litre or Cypermethrin 10EC @ 1.0ml/litre of water is recommended for control of leaf hopper.
- Apply Irrigation.

### **Horticultural**

- The prevailing weather conditions are favorable for the incidence of fruit fly in mango. Farmers are advised to install 32 Pheromon traps /acre to control the fruit fly.
- There are chances of termite attack in the standing horticultural crops. Hence, to control, apply Chlorpyrephos 20 EC or Fipronil 5 SC @ 2.0 ml/litre for termites.
- It is advised to provide mechanical support in banana and papaya plants to prevent lodging due to gusty wind. Harvest the matured and undamaged banana bunches and papaya fruits under the present weather condition and spray Copper oxychloride @ 3 g per litre of water for control of fungal diseases.
- Apply Irrigation.

### **Livestock**

- Give anthelmintic drugs.
- Use naphthalene or turpentine oil to reduce mosquitoes.
- Feed mineral mixture to increase immunity.
- Give enough cold water to drink.
- Keep the cattle in the safest place to protect them from storms, rain, and lightning.
- Keep enough ventilation in cowsheds.
- Keep the cowshed neat and clean.

### **Poultry**

- Vaccinate if not vaccinated against Ranikhet, cholera, duck plague.
- Remove affected poultry if disease occurs.
- Use clean water or glucose saline in more heat.
- Keep the poultry shed clean and dry.

### **Fishery**

- Maintain pond depth of 1-1.5 m.
- Apply fertilizers (per day- Urea 6gm, TSP 4gm per decimal).
- Give quality food according to the quantity of fish at a specific time and place every day.
- Making your fish food, maintain the percentage of proteins and other ingredients as per the formula.
- Observe the fish for getting fed.
- Monitor the growth of fish and disease by sampling every 15 days.
- If there were fish diseases or less growth, contact immediately the nearest Upazila fisheries office.

## Jute

- **Stage:**Vegetative
- It is advised to keep jute field clean and weed free to avoid infestation from insect pests and diseases.
- Keep the drain and irrigation channel weed free and clean to avoid excess water to stand in the plot at growing stages.
- The prevailing weather conditions are congenial for incidence of Field cricket in Jute field. Farmers are advised to spray Chlorpyrephos 20EC @ 2.0 ml/liter water to control insect.
- There is chance of attack of Jute Yellow mite at this stage of Jute crop. Spray Sulphur (Thiovit 80WG) @ 3.5g/liter water.
- At this stage of crop, there is a chance of Jute hairy caterpillar and Jute semi looper attack.To control pest farmers are advised to hand pick the egg mass and destroy them by burning or in kerosinized water. In case of severe attack spray Diazinon 60EC @ 1.0ml/liter of water.
- Present weather conditions and at this stage of crop, the incidence of Seedling blight and Stem rot may be seen in the Jute field. To control this pest spray Mancozeb (Dithane M45/Indofil M45) @ 2g/litre of water on fair weather. All the plant protection measure should be taken at clear & sunny days.
- Farmers are advise for 3rd weeding, mulching and simultaneous thinning at 40-50 DAS. Uproot comparatively under growth plants during this time.
- To protect deshi jute crop (>4 ft tall) from lodging due to high wind speed, the peripheral jute plants (round the field) need to be tied together by taking 4-5 jute plants in a consecutive manner.
- Monitor pest and disease incidences and take appropriate plant protection measures.
- Present weather condition is congenial for **Stem rot** infestation. Spray of Mancozeb @ 2gm/L Water

## Rice Aus

- **Stage:**Tillering
- Apply irrigation.
- Present weather condition is congenial for **Gall midge** infestation. Control measure: Carbofuran@10kg per ha.

## Vegetable

- Because of increase in temperature, there is chance of sucking pest in vegetable crops. To control, application of Malathion 57EC/Dimathoate 40EC @ 1.0ml per litre of water is advised once a week.
- For control of fruit and shoot borer in brinjal under present weather condition, it is advised to apply Cypermethrin 10EC @ 0.5ml/litre or Emamectin Benzoate 5 SP @1.0g/litre or Deltamethrin 2.5EC @ 1.0ml/litre or Diazinon 60EC@ 1.0ml/litre water.
- Monitoring is advised for infestation of leaf hopper in okra during present weather condition. Spraying of Imidacloprid @ 0.5ml/litre or Cypermethrin 10EC @ 1.0ml/litre of water is recommended for control of leaf hopper.
- Apply Irrigation.



## Horticultural

- The prevailing weather conditions are favorable for the incidence of fruit fly in mango. Farmers are advised to install 32 Pheromon traps /acre to control the fruit fly.
- There are chances of termite attack in the standing horticultural crops. Hence, to control, apply Chlorpyrephos 20 EC or Fipronil 5 SC @ 2.0 ml/litre for termites.
- It is advised to provide mechanical support in banana and papaya plants to prevent lodging due to gusty wind. Harvest the matured and undamaged banana bunches and papaya fruits under the present weather condition and spray Copper oxychloride @ 3 g per litre of water for control of fungal diseases.
- Apply Irrigation.

## Livestock

- Give anthelmintic drugs.
- Use naphthalene or turpentine oil to reduce mosquitoes.
- Feed mineral mixture to increase immunity.
- Give enough cold water to drink.
- Keep the cattle in the safest place to protect them from storms, rain, and lightning.
- Keep enough ventilation in cowsheds.
- Keep the cowshed neat and clean.

## Poultry

- Vaccinate if not vaccinated against Ranikhet, cholera, duck plague.
- Remove affected poultry if disease occurs.
- Use clean water or glucose saline in more heat.
- Keep the poultry shed clean and dry.

## Fishery

- Maintain pond depth of 1-1.5 m.
- Apply fertilizers (per day- Urea 6gm, TSP 4gm per decimal).
- Give quality food according to the quantity of fish at a specific time and place every day.
- Making your fish food, maintain the percentage of proteins and other ingredients as per the formula.
- Observe the fish for getting fed.
- Monitor the growth of fish and disease by sampling every 15 days.
- If there were fish diseases or less growth, contact immediately the nearest Upazila fisheries office.

## Bogura Region (Districts: Bogura, Joypurhat, Pabna, Sirajganj)

## Jute

- **Stage:**Vegetative
- It is advised to keep jute field clean and weed free to avoid infestation from insect pests and diseases.

- Keep the drain and irrigation channel weed free and clean to avoid excess water to stand in the plot at growing stages.
- The prevailing weather conditions are congenial for incidence of Field cricket in Jute field. Farmers are advised to spray Chlorpyrephos 20EC @ 2.0 ml/liter water to control insect.
- There is chance of attack of Jute Yellow mite at this stage of Jute crop. Spray Sulphur (Thiovit 80WG) @ 3.5g/liter water.
- At this stage of crop, there is a chance of Jute hairy caterpillar and Jute semi looper attack. To control pest farmers are advised to hand pick the egg mass and destroy them by burning or in kerosinized water. In case of severe attack spray Diazinon 60EC @ 1.0ml/liter of water.
- Present weather conditions and at this stage of crop, the incidence of Seedling blight and Stem rot may be seen in the Jute field. To control this pest spray Mancozeb (Dithane M45/Indofil M45) @ 2g/litre of water on fair weather. All the plant protection measure should be taken at clear & sunny days.
- Farmers are advise for 3rd weeding, mulching and simultaneous thinning at 40-50 DAS. Uproot comparatively under growth plants during this time.
- To protect deshi jute crop (>4 ft tall) from lodging due to high wind speed, the peripheral jute plants (round the field) need to be tied together by taking 4-5 jute plants in a consecutive manner.
- Monitor pest and disease incidences and take appropriate plant protection measures.

### **Rice Aus**

- **Stage:** Seedbed
- Take appropriate action for preparation of seedbed for Aus paddy. Prepare the seedbed in high land and also make arrangements for draining out of water and also advised for community based seedbed preparation.
- Construct 40-50 cm. drain in between two seedbeds. This will be used for draining out extra water, irrigation also apply fertilizer/insecticide as and when necessary.
- Advise to use BRRI recommended varieties of seed. If required, provide proper treatment of seeds so that there will be less chance of diseases. Advise to sow 80-100gm healthy sprouted seed per square meter seed bed.
- Close monitoring is required so that birds should not take away the seed from the seed bed. After 4-5 days of seed germination, it is better to maintain water level 2-3 cm in seed bed so that it can control the weeds and seed damages due to birds.
- If the seedbed becomes yellow, apply urea at the rate of 283 gm per decimal. Apply 400 gm gypsum per decimal if the seedlings are still not recovered after application of urea.

### **Rice Boro**

- **Stage:** Grain Formation
- Arrange proper solarisation within the row by stirring the plants after each 2 rows.
- Remove water from land before pesticide application.
- At this stage of crop and climatic conditions, there is a chance of Rice bug incidences. For Rice bug control spray Carbaryl (85WP) @2g/liter or Chlorpyrephos (20EC) @ 2.0 ml/litre of water. Avoid excess irrigation in the field, in absence of rain otherwise the basal part of the plant will be rotten.

- If any infestation/attack /symptoms of Brown Plant Hoppers (BPH) insects are found, then should go for spray with insecticide like Isoprocarb @ 2.5g or Imidacloprid @ 2.0 ml. per litre water only in clear weather and when there is no forecasting of rains.
- Maintain 2-5 cm land water level.
- Apply irrigation.

### **Vegetable**

- Because of increase in temperature, there is chance of sucking pest in vegetable crops. To control, application of Malathion 57EC/Dimathoate 40EC @ 1.0ml per litre of water is advised once a week.
- For control of fruit and shoot borer in brinjal under present weather condition, it is advised to apply Cypermethrin 10EC @ 0.5ml/litre or Emamectin Benzoate 5 SP @1.0g/litre or Deltamethrin 2.5EC @ 1.0ml/litre or Diazinon 60EC@ 1.0ml/litre water.
- Monitoring is advised for infestation of leaf hopper in okra during present weather condition. Spraying of Imidacloprid @ 0.5ml/litre or Cypermethrin 10EC @ 1.0ml/litre of water is recommended for control of leaf hopper.
- Apply Irrigation.

### **Horticultural**

- The prevailing weather conditions are favorable for the incidence of fruit fly in mango. Farmers are advised to install 32 Pheromon traps /acre to control the fruit fly.
- There are chances of termite attack in the standing horticultural crops. Hence, to control, apply Chlorpyrephos 20 EC or Fipronil 5 SC @ 2.0 ml/litre for termites.
- It is advised to provide mechanical support in banana and papaya plants to prevent lodging due to gusty wind. Harvest the matured and undamaged banana bunches and papaya fruits under the present weather condition and spray Copper oxychloride @ 3 g per litre of water for control of fungal diseases.
- Apply Irrigation.

### **Livestock**

- Give anthelmintic drugs.
- Use naphthalene or turpentine oil to reduce mosquitoes.
- Feed mineral mixture to increase immunity.
- Give enough cold water to drink.
- Keep the cattle in the safest place to protect them from storms, rain, and lightning.
- Keep enough ventilation in cowsheds.
- Keep the cowshed neat and clean.

### **Poultry**

- Vaccinate if not vaccinated against Ranikhet, cholera, duck plague.
- Remove affected poultry if disease occurs.
- Use clean water or glucose saline in more heat.
- Keep the poultry shed clean and dry.

### **Fishery**



- Maintain pond depth of 1-1.5 m.
- Apply fertilizers (per day- Urea 6gm, TSP 4gm per decimal).
- Give quality food according to the quantity of fish at a specific time and place every day.
- Making your fish food, maintain the percentage of proteins and other ingredients as per the formula.
- Observe the fish for getting fed.
- Monitor the growth of fish and disease by sampling every 15 days.
- If there were fish diseases or less growth, contact immediately the nearest Upazila fisheries office.

### Sylhet Region (Districts: Sylhet, Moulvibazar, Sunamganj, Habiganj)

#### Rice Aus

- **Stage:**Seedbed
- Take appropriate action for preparation of seedbed for Aus paddy. Prepare the seedbed in high land and also make arrangements for draining out of water and also advised for community based seedbed preparation.
- Construct 40-50 cm. drain in between two seedbeds. This will be used for draining out extra water, irrigation also apply fertilizer/insecticide as and when necessary.
- Advise to use BRRI recommended varieties of seed. If required, provide proper treatment of seeds so that there will be less chance of diseases. Advise to sow 80-100gm healthy sprouted seed per square meter seed bed.
- Close monitoring is required so that birds should not take away the seed from the seed bed. After 4-5 days of seed germination, it is better to maintain water level 2-3 cm in seed bed so that it can control the weeds and seed damages due to birds.
- If the seedbed becomes yellow, apply urea at the rate of 283 gm per decimal. Apply 400 gm gypsum per decimal if the seedlings are still not recovered after application of urea.

#### Vegetable

- Because of increase in temperature, there is chance of sucking pest in vegetable crops. To control, application of Malathion 57EC/Dimathoate 40EC @ 1.0ml per litre of water is advised once a week.
- For control of fruit and shoot borer in brinjal under present weather condition, it is advised to apply Cypermethrin 10EC @ 0.5ml/litre or Emamectin Benzoate 5 SP @1.0g/litre or Deltamethrin 2.5EC @ 1.0ml/litre or Diazinon 60EC@ 1.0ml/litre water.
- Monitoring is advised for infestation of leaf hopper in okra during present weather condition. Spraying of Imidacloprid @ 0.5ml/litre or Cypermethrin 10EC @ 1.0ml/litre of water is recommended for control of leaf hopper.
- Apply light irrigation if required.

#### Horticultural

- The prevailing weather conditions are favorable for the incidence of fruit fly in mango. Farmers are advised to install 32 Pheromon traps /acre to control the fruit fly.

- There are chances of termite attack in the standing horticultural crops. Hence, to control, apply Chlorpyrephos 20 EC or Fipronil 5 SC @ 2.0 ml/litre for termites.
- It is advised to provide mechanical support in banana and papaya plants to prevent lodging due to gusty wind. Harvest the matured and undamaged banana bunches and papaya fruits under the present weather condition and spray Copper oxychloride @ 3 g per litre of water for control of fungal diseases.
- Apply light Irrigation.

### **Livestock**

- Give anthelmintic drugs.
- Use naphthalene or turpentine oil to reduce mosquitoes.
- Feed mineral mixture to increase immunity.
- Give enough cold water to drink.
- Keep the cattle in the safest place to protect them from storms, rain, and lightning.
- Keep enough ventilation in cowsheds.
- Keep the cowshed neat and clean.

### **Poultry**

- Vaccinate if not vaccinated against Ranikhet, cholera, duck plague.
- Remove affected poultry if disease occurs.
- Use clean water or glucose saline in more heat.
- Keep the poultry shed clean and dry.

### **Fishery**

- Maintain pond depth of 1-1.5 m.
- Apply fertilizers (per day- Urea 6gm, TSP 4gm per decimal).
- Give quality food according to the quantity of fish at a specific time and place every day.
- Making your fish food, maintain the percentage of proteins and other ingredients as per the formula.
- Observe the fish for getting fed.
- Monitor the growth of fish and disease by sampling every 15 days.
- If there were fish diseases or less growth, contact immediately the nearest Upazila fisheries office.

## **Rangamati Region (Districts: Rangamati, Khagrachari and Bandarban)**

### **Rice Aus**

- **Stage:**Tillering
- Apply irrigation.
- Present weather condition is congenial for **Gall midge** infestation. Control measure: Carbofuran@10kg per ha.

### **Vegetable**

- Because of increase in temperature, there is chance of sucking pest in vegetable crops. To control, application of Malathion 57EC/Dimathoate 40EC @ 1.0ml per litre of water is advised once a week.
- For control of fruit and shoot borer in brinjal under present weather condition, it is advised to apply Cypermethrin 10EC @ 0.5ml/litre or Emamectin Benzoate 5 SP @1.0g/litre or Deltamethrin 2.5EC @ 1.0ml/litre or Diazinon 60EC@ 1.0ml/litre water.
- Monitoring is advised for infestation of leaf hopper in okra during present weather condition. Spraying of Imidacloprid @ 0.5ml/litre or Cypermethrin 10EC @ 1.0ml/litre of water is recommended for control of leaf hopper.
- Apply Irrigation.

### **Horticultural**

- The prevailing weather conditions are favorable for the incidence of fruit fly in mango. Farmers are advised to install 32 Pheromon traps /acre to control the fruit fly.
- There are chances of termite attack in the standing horticultural crops. Hence, to control, apply Chlorpyrephos 20 EC or Fipronil 5 SC @ 2.0 ml/litre for termites.
- It is advised to provide mechanical support in banana and papaya plants to prevent lodging due to gusty wind. Harvest the matured and undamaged banana bunches and papaya fruits under the present weather condition and spray Copper oxychloride @ 3 g per litre of water for control of fungal diseases.
- Apply Irrigation.

### **Livestock**

- Give anthelmintic drugs.
- Use naphthalene or turpentine oil to reduce mosquitoes.
- Feed mineral mixture to increase immunity.
- Give enough cold water to drink.
- Keep the cattle in the safest place to protect them from storms, rain, and lightning.
- Keep enough ventilation in cowsheds.
- Keep the cowshed neat and clean.

### **Poultry**

- Vaccinate if not vaccinated against Ranikhet, cholera, duck plague.
- Remove affected poultry if disease occurs.
- Use clean water or glucose saline in more heat.
- Keep the poultry shed clean and dry.

### **Fishery**

- Maintain pond depth of 1-1.5 m.
- Apply fertilizers (per day- Urea 6gm, TSP 4gm per decimal).
- Give quality food according to the quantity of fish at a specific time and place every day.
- Making your fish food, maintain the percentage of proteins and other ingredients as per the formula.
- Observe the fish for getting fed.



- Monitor the growth of fish and disease by sampling every 15 days.
- If there were fish diseases or less growth, contact immediately the nearest Upazila fisheries office.

### **Barishal Region (Districts: Jhalakati, Patuakhali, Pirujpur, Barguna, Barishal, Bhola)**

#### **Jute**

- **Stage:**Vegetative
- It is advised to keep jute field clean and weed free to avoid infestation from insect pests and diseases.
- Keep the drain and irrigation channel weed free and clean to avoid excess water to stand in the plot at growing stages.
- The prevailing weather conditions are congenial for incidence of Field cricket in Jute field. Farmers are advised to spray Chlorpyrephos 20EC @ 2.0 ml/liter water to control insect.
- There is chance of attack of Jute Yellow mite at this stage of Jute crop. Spray Sulphur (Thiovit 80WG) @ 3.5g/liter water.
- At this stage of crop, there is a chance of Jute hairy caterpillar and Jute semi looper attack.To control pest farmers are advised to hand pick the egg mass and destroy them by burning or in kerosinized water. In case of severe attack spray Diazinon 60EC @ 1.0ml/liter of water.
- Present weather conditions and at this stage of crop, the incidence of Seedling blight and Stem rot may be seen in the Jute field. To control this pest spray Mancozeb (Dithane M45/Indofil M45) @ 2g/litre of water on fair weather. All the plant protection measure should be taken at clear & sunny days.
- Farmers are advise for 3rd weeding, mulching and simultaneous thinning at 40-50 DAS. Uproot comparatively under growth plants during this time.
- To protect deshi jute crop (>4 ft tall) from lodging due to high wind speed, the peripheral jute plants (round the field) need to be tied together by taking 4-5 jute plants in a consecutive manner.
- Monitor pest and disease incidences and take appropriate plant protection measures.

#### **Rice Aus**

- **Stage:**Tillering
- Apply irrigation.

#### **Vegetable**

- Because of increase in temperature, there is chance of sucking pest in vegetable crops. To control, application of Malathion 57EC/Dimathoate 40EC @ 1.0ml per litre of water is advised once a week.
- For control of fruit and shoot borer in brinjal under present weather condition, it is advised to apply Cypermethrin 10EC @ 0.5ml/litre or Emamectin Benzoate 5 SP @1.0g/litre or Deltamethrin 2.5EC @ 1.0ml/litre or Diazinon 60EC@ 1.0ml/litre water.
- Monitoring is advised for infestation of leaf hopper in okra during present weather condition. Spraying of Imidacloprid @ 0.5ml/litre or Cypermethrin 10EC @ 1.0ml/litre of water is recommended for control of leaf hopper.

- Apply Irrigation.

### **Horticultural**

- The prevailing weather conditions are favorable for the incidence of fruit fly in mango. Farmers are advised to install 32 Pheromon traps /acre to control the fruit fly.
- There are chances of termite attack in the standing horticultural crops. Hence, to control, apply Chlorpyrephos 20 EC or Fipronil 5 SC @ 2.0 ml/litre for termites.
- It is advised to provide mechanical support in banana and papaya plants to prevent lodging due to gusty wind. Harvest the matured and undamaged banana bunches and papaya fruits under the present weather condition and spray Copper oxychloride @ 3 g per litre of water for control of fungal diseases.
- Apply Irrigation.

### **Livestock**

- Give anthelmintic drugs.
- Use naphthalene or turpentine oil to reduce mosquitoes.
- Feed mineral mixture to increase immunity.
- Give enough cold water to drink.
- Keep the cattle in the safest place to protect them from storms, rain, and lightning.
- Keep enough ventilation in cowsheds.
- Keep the cowshed neat and clean.

### **Poultry**

- Vaccinate if not vaccinated against Ranikhet, cholera, duck plague.
- Remove affected poultry if disease occurs.
- Use clean water or glucose saline in more heat.
- Keep the poultry shed clean and dry.

### **Fishery**

- Maintain pond depth of 1-1.5 m.
- Apply fertilizers (per day- Urea 6gm, TSP 4gm per decimal).
- Give quality food according to the quantity of fish at a specific time and place every day.
- Making your fish food, maintain the percentage of proteins and other ingredients as per the formula.
- Observe the fish for getting fed.
- Monitor the growth of fish and disease by sampling every 15 days.
- If there were fish diseases or less growth, contact immediately the nearest Upazila fisheries office.

**Jashore Region (Districts: Jashore, Kushtia, Chuadanga, Jhenaidah, Meherpur, Magura)**

### **Jute**

- **Stage:**Vegetative

- It is advised to keep jute field clean and weed free to avoid infestation from insect pests and diseases.
- Keep the drain and irrigation channel weed free and clean to avoid excess water to stand in the plot at growing stages.
- The prevailing weather conditions are congenial for incidence of Field cricket in Jute field. Farmers are advised to spray Chlorpyrephos 20EC @ 2.0 ml/liter water to control insect.
- There is chance of attack of Jute Yellow mite at this stage of Jute crop. Spray Sulphur (Thiovit 80WG) @ 3.5g/liter water.
- At this stage of crop, there is a chance of Jute hairy caterpillar and Jute semi looper attack. To control pest farmers are advised to hand pick the egg mass and destroy them by burning or in kerosinized water. In case of severe attack spray Diazinon 60EC @ 1.0ml/liter of water.
- Present weather conditions and at this stage of crop, the incidence of Seedling blight and Stem rot may be seen in the Jute field. To control this pest spray Mancozeb (Dithane M45/Indofil M45) @ 2g/litre of water on fair weather. All the plant protection measure should be taken at clear & sunny days.
- Farmers are advise for 3rd weeding, mulching and simultaneous thinning at 40-50 DAS. Uproot comparatively under growth plants during this time.
- To protect deshi jute crop (>4 ft tall) from lodging due to high wind speed, the peripheral jute plants (round the field) need to be tied together by taking 4-5 jute plants in a consecutive manner.
- Monitor pest and disease incidences and take appropriate plant protection measures.

### Rice Boro

- **Stage:Heading**
- Arrange proper solarisation within the row by stirring the plants after each 2 rows.
- Where seedlings are 90-110 days old apply last top dressing with urea and potash.
- There is a chance of attack of insect/pests like, Rice Stem borer, Rice hispa, etc. Constant monitoring is required for its level of incidences. If noticed, collect the adults using hand net & destroy them by burying under soil or by burning. Also apply Carbofuran 5g @10kg / ha. or Diazinon 10g @17kg/ha. for its control.
- There is chance of Blast and brown spot attack due to light fog and raised temperature. . Apply Trooper 6.0g or Nativo 6.0g/litre water twice in 10-15 days.
- Keep the field and irrigation channel weed free.
- Maintain 2-5 cm land water level.
- Apply irrigation.
- Present weather condition is congenial for **Gall midge** infestation. Apply Carbofuran@10kg per ha.
- Present weather condition is congenial for **Sheath rot** infestation. Nativo 75WG/ Trooper/Amister top 325sp /Hexaconazol @ 1ml/litre water.

### Vegetable

- Because of increase in temperature, there is chance of sucking pest in vegetable crops. To control, application of Malathion 57EC/Dimathoate 40EC @ 1.0ml per litre of water is advised once a week.
- For control of fruit and shoot borer in brinjal under present weather condition, it is advised to apply Cypermethrin 10EC @ 0.5ml/litre or Emamectin Benzoate 5 SP

@1.0g/litre or Deltamethrin 2.5EC @ 1.0ml/litre or Diazinon 60EC@ 1.0ml/litre water.

- Monitoring is advised for infestation of leaf hopper in okra during present weather condition. Spraying of Imidacloprid @ 0.5ml/litre or Cypermethrin 10EC @ 1.0ml/litre of water is recommended for control of leaf hopper.
- Apply Irrigation.

### **Horticultural**

- The prevailing weather conditions are favorable for the incidence of fruit fly in mango. Farmers are advised to install 32 Pheromon traps /acre to control the fruit fly.
- There are chances of termite attack in the standing horticultural crops. Hence, to control, apply Chlorpyrephos 20 EC or Fipronil 5 SC @ 2.0 ml/litre for termites.
- It is advised to provide mechanical support in banana and papaya plants to prevent lodging due to gusty wind. Harvest the matured and undamaged banana bunches and papaya fruits under the present weather condition and spray Copper oxychloride @ 3 g per litre of water for control of fungal diseases.
- Apply Irrigation.

### **Livestock**

- Give anthelmintic drugs.
- Use naphthalene or turpentine oil to reduce mosquitoes.
- Feed mineral mixture to increase immunity.
- Give enough cold water to drink.
- Keep the cattle in the safest place to protect them from storms, rain, and lightning.
- Keep enough ventilation in cowsheds.
- Keep the cowshed neat and clean.

### **Poultry**

- Vaccinate if not vaccinated against Ranikhet, cholera, duck plague.
- Remove affected poultry if disease occurs.
- Use clean water or glucose saline in more heat.
- Keep the poultry shed clean and dry.

### **Fishery**

- Maintain pond depth of 1-1.5 m.
- Apply fertilizers (per day- Urea 6gm, TSP 4gm per decimal).
- Give quality food according to the quantity of fish at a specific time and place every day.
- Making your fish food, maintain the percentage of proteins and other ingredients as per the formula.
- Observe the fish for getting fed.
- Monitor the growth of fish and disease by sampling every 15 days.
- If there were fish diseases or less growth, contact immediately the nearest Upazila fisheries office.

**Faridpur Region (Districts: Faridpur, Rajbari, Madaripur, Shariatpur and Gopalganj)**



## Jute

- **Stage:**Vegetative
- It is advised to keep jute field clean and weed free to avoid infestation from insect pests and diseases.
- Keep the drain and irrigation channel weed free and clean to avoid excess water to stand in the plot at growing stages.
- The prevailing weather conditions are congenial for incidence of Field cricket in Jute field. Farmers are advised to spray Chlorpyrephos 20EC @ 2.0 ml/liter water to control insect.
- There is chance of attack of Jute Yellow mite at this stage of Jute crop. Spray Sulphur (Thiovit 80WG) @ 3.5g/liter water.
- At this stage of crop, there is a chance of Jute hairy caterpillar and Jute semi looper attack.To control pest farmers are advised to hand pick the egg mass and destroy them by burning or in kerosinized water. In case of severe attack spray Diazinon 60EC @ 1.0ml/liter of water.
- Present weather conditions and at this stage of crop, the incidence of Seedling blight and Stem rot may be seen in the Jute field. To control this pest spray Mancozeb (Dithane M45/Indofil M45) @ 2g/litre of water on fair weather. All the plant protection measure should be taken at clear & sunny days.
- Farmers are advise for 3rd weeding, mulching and simultaneous thinning at 40-50 DAS. Uproot comparatively under growth plants during this time.
- To protect deshi jute crop (>4 ft tall) from lodging due to high wind speed, the peripheral jute plants (round the field) need to be tied together by taking 4-5 jute plants in a consecutive manner.
- Monitor pest and disease incidences and take appropriate plant protection measures.

## Rice Aus

- **Stage:**Tillering
- Apply irrigation.
- Present weather condition is congenial for **Gall midge** infestation. Control measure: Carbofuran@10kg per ha.

## Vegetable

- Because of increase in temperature, there is chance of sucking pest in vegetable crops. To control, application of Malathion 57EC/Dimathoate 40EC @ 1.0ml per litre of water is advised once a week.
- For control of fruit and shoot borer in brinjal under present weather condition, it is advised to apply Cypermethrin 10EC @ 0.5ml/litre or Emamectin Benzoate 5 SP @1.0g/litre or Deltamethrin 2.5EC @ 1.0ml/litre or Diazinon 60EC@ 1.0ml/litre water.
- Monitoring is advised for infestation of leaf hopper in okra during present weather condition. Spraying of Imidacloprid @ 0.5ml/litre or Cypermethrin 10EC @ 1.0ml/litre of water is recommended for control of leaf hopper.
- Apply Irrigation.

## Horticultural

- The prevailing weather conditions are favorable for the incidence of fruit fly in mango. Farmers are advised to install 32 Pheromon traps /acre to control the fruit fly.
- There are chances of termite attack in the standing horticultural crops. Hence, to control, apply Chlorpyrephos 20 EC or Fipronil 5 SC @ 2.0 ml/litre for termites.
- It is advised to provide mechanical support in banana and papaya plants to prevent lodging due to gusty wind. Harvest the matured and undamaged banana bunches and papaya fruits under the present weather condition and spray Copper oxychloride @ 3 g per litre of water for control of fungal diseases.
- Apply Irrigation.

### **Livestock**

- Give anthelmintic drugs.
- Use naphthalene or turpentine oil to reduce mosquitoes.
- Feed mineral mixture to increase immunity.
- Give enough cold water to drink.
- Keep the cattle in the safest place to protect them from storms, rain, and lightning.
- Keep enough ventilation in cowsheds.
- Keep the cowshed neat and clean.

### **Poultry**

- Vaccinate if not vaccinated against Ranikhet, cholera, duck plague.
- Remove affected poultry if disease occurs.
- Use clean water or glucose saline in more heat.
- Keep the poultry shed clean and dry.

### **Fishery**

- Maintain pond depth of 1-1.5 m.
- Apply fertilizers (per day- Urea 6gm, TSP 4gm per decimal).
- Give quality food according to the quantity of fish at a specific time and place every day.
- Making your fish food, maintain the percentage of proteins and other ingredients as per the formula.
- Observe the fish for getting fed.
- Monitor the growth of fish and disease by sampling every 15 days.
- If there were fish diseases or less growth, contact immediately the nearest Upazila fisheries office.

**Dhaka Region (Districts: Dhaka, Tangail, Gazipur, Narsingdi, Narayanganj, Munshiganj, Manikgonj)**

### **Jute**

- **Stage:**Vegetative
- It is advised to keep jute field clean and weed free to avoid infestation from insect pests and diseases.
- Keep the drain and irrigation channel weed free and clean to avoid excess water to stand in the plot at growing stages.

- The prevailing weather conditions are congenial for incidence of Field cricket in Jute field. Farmers are advised to spray Chlorpyrephos 20EC @ 2.0 ml/liter water to control insect.
- There is chance of attack of Jute Yellow mite at this stage of Jute crop. Spray Sulphur (Thiovit 80WG) @ 3.5g/liter water.
- At this stage of crop, there is a chance of Jute hairy caterpillar and Jute semi looper attack. To control pest farmers are advised to hand pick the egg mass and destroy them by burning or in kerosinized water. In case of severe attack spray Diazinon 60EC @ 1.0ml/liter of water.
- Present weather conditions and at this stage of crop, the incidence of Seedling blight and Stem rot may be seen in the Jute field. To control this pest spray Mancozeb (Dithane M45/Indofil M45) @ 2g/litre of water on fair weather. All the plant protection measure should be taken at clear & sunny days.
- Farmers are advise for 3rd weeding, mulching and simultaneous thinning at 40-50 DAS. Uproot comparatively under growth plants during this time.
- To protect deshi jute crop (>4 ft tall) from lodging due to high wind speed, the peripheral jute plants (round the field) need to be tied together by taking 4-5 jute plants in a consecutive manner.
- Monitor pest and disease incidences and take appropriate plant protection measures.

### Rice Aus

- **Stage:**Seedbed
- Take appropriate action for preparation of seedbed for Aus paddy. Prepare the seedbed in high land and also make arrangements for draining out of water and also advised for community based seedbed preparation.
- Construct 40-50 cm. drain in between two seedbeds. This will be used for draining out extra water, irrigation also apply fertilizer/insecticide as and when necessary.
- Advise to use BRRI recommended varieties of seed. If required, provide proper treatment of seeds so that there will be less chance of diseases. Advise to sow 80-100gm healthy sprouted seed per square meter seed bed.
- Close monitoring is required so that birds should not take away the seed from the seed bed. After 4-5 days of seed germination, it is better to maintain water level 2-3 cm in seed bed so that it can control the weeds and seed damages due to birds.
- If the seedbed becomes yellow, apply urea at the rate of 283 gm per decimal. Apply 400 gm gypsum per decimal if the seedlings are still not recovered after application of urea.

### Vegetable

- Because of increase in temperature, there is chance of sucking pest in vegetable crops. To control, application of Malathion 57EC/Dimathoate 40EC @ 1.0ml per litre of water is advised once a week.
- For control of fruit and shoot borer in brinjal under present weather condition, it is advised to apply Cypermethrin 10EC @ 0.5ml/litre or Emamectin Benzoate 5 SP @1.0g/litre or Deltamethrin 2.5EC @ 1.0ml/litre or Diazinon 60EC@ 1.0ml/litre water.
- Monitoring is advised for infestation of leaf hopper in okra during present weather condition. Spraying of Imidacloprid @ 0.5ml/litre or Cypermethrin 10EC @ 1.0ml/litre of water is recommended for control of leaf hopper.

- Apply Irrigation.

### **Horticultural**

- The prevailing weather conditions are favorable for the incidence of fruit fly in mango. Farmers are advised to install 32 Pheromon traps /acre to control the fruit fly.
- There are chances of termite attack in the standing horticultural crops. Hence, to control, apply Chlorpyrephos 20 EC or Fipronil 5 SC @ 2.0 ml/litre for termites.
- It is advised to provide mechanical support in banana and papaya plants to prevent lodging due to gusty wind. Harvest the matured and undamaged banana bunches and papaya fruits under the present weather condition and spray Copper oxychloride @ 3 g per litre of water for control of fungal diseases.
- Apply Irrigation.

### **Livestock**

- Give anthelmintic drugs.
- Use naphthalene or turpentine oil to reduce mosquitoes.
- Feed mineral mixture to increase immunity.
- Give enough cold water to drink.
- Keep the cattle in the safest place to protect them from storms, rain, and lightning.
- Keep enough ventilation in cowsheds.
- Keep the cowshed neat and clean.

### **Poultry**

- Vaccinate if not vaccinated against Ranikhet, cholera, duck plague.
- Remove affected poultry if disease occurs.
- Use clean water or glucose saline in more heat.
- Keep the poultry shed clean and dry.

### **Fishery**

- Maintain pond depth of 1-1.5 m.
- Apply fertilizers (per day- Urea 6gm, TSP 4gm per decimal).
- Give quality food according to the quantity of fish at a specific time and place every day.
- Making your fish food, maintain the percentage of proteins and other ingredients as per the formula.
- Observe the fish for getting fed.
- Monitor the growth of fish and disease by sampling every 15 days.
- If there were fish diseases or less growth, contact immediately the nearest Upazila fisheries office.

**Chattogram region (Districts: Chattogram, Lakshmipur, Coxsbazar, Noakhali and Feni)**

### **Rice Aus**

- **Stage:**Tillering

- Apply irrigation.

### **Vegetable**

- For control of fruit and shoot borer in brinjal under present weather condition, it is advised to apply Cypermethrin 10EC @ 0.5ml/litre or Emamectin Benzoate 5 SP @1.0g/litre or Deltamethrin 2.5EC @ 1.0ml/litre or Diazinon 60EC@ 1.0ml/litre water.
- Monitoring is advised for infestation of leaf hopper in okra during present weather condition. Spraying of Imidacloprid @ 0.5ml/litre or Cypermethrin 10EC @ 1.0ml/litre of water is recommended for control of leaf hopper.
- Apply Irrigation.

### **Horticultural**

- The prevailing weather conditions are favorable for the incidence of fruit fly in mango. Farmers are advised to install 32 Pheromon traps /acre to control the fruit fly.
- There are chances of termite attack in the standing horticultural crops. Hence, to control, apply Chlorpyrephos 20 EC or Fipronil 5 SC @ 2.0 ml/litre for termites.
- It is advised to provide mechanical support in banana and papaya plants to prevent lodging due to gusty wind. Harvest the matured and undamaged banana bunches and papaya fruits under the present weather condition and spray Copper oxychloride @ 3 g per litre of water for control of fungal diseases.
- Apply Irrigation.

### **Livestock**

- Give anthelmintic drugs.
- Use naphthalene or turpentine oil to reduce mosquitoes.
- Feed mineral mixture to increase immunity.
- Give enough cold water to drink.
- Keep the cattle in the safest place to protect them from storms, rain, and lightning.
- Keep enough ventilation in cowsheds.
- Keep the cowshed neat and clean.

### **Poultry**

- Vaccinate if not vaccinated against Ranikhet, cholera, duck plague.
- Remove affected poultry if disease occurs.
- Use clean water or glucose saline in more heat.
- Keep the poultry shed clean and dry.

### **Fishery**

- Maintain pond depth of 1-1.5 m.
- Apply fertilizers (per day- Urea 6gm, TSP 4gm per decimal).
- Give quality food according to the quantity of fish at a specific time and place every day.
- Making your fish food, maintain the percentage of proteins and other ingredients as per the formula.



- Observe the fish for getting fed.
- Monitor the growth of fish and disease by sampling every 15 days.
- If there were fish diseases or less growth, contact immediately the nearest Upazila fisheries office.

### Cumilla Region (Districts: Cumilla, Chandpur, Bramanbaria)

#### Jute

- **Stage:**Vegetative
- It is advised to keep jute field clean and weed free to avoid infestation from insect pests and diseases.
- Keep the drain and irrigation channel weed free and clean to avoid excess water to stand in the plot at growing stages.
- The prevailing weather conditions are congenial for incidence of Field cricket in Jute field. Farmers are advised to spray Chlorpyrephos 20EC @ 2.0 ml/liter water to control insect.
- There is chance of attack of Jute Yellow mite at this stage of Jute crop. Spray Sulphur (Thiovit 80WG) @ 3.5g/liter water.
- At this stage of crop, there is a chance of Jute hairy caterpillar and Jute semi looper attack.To control pest farmers are advised to hand pick the egg mass and destroy them by burning or in kerosinized water. In case of severe attack spray Diazinon 60EC @ 1.0ml/liter of water.
- Present weather conditions and at this stage of crop, the incidence of Seedling blight and Stem rot may be seen in the Jute field. To control this pest spray Mancozeb (Dithane M45/Indofil M45) @ 2g/litre of water on fair weather. All the plant protection measure should be taken at clear & sunny days.
- Farmers are advise for 3rd weeding, mulching and simultaneous thinning at 40-50 DAS. Uproot comparatively under growth plants during this time.
- To protect deshi jute crop (>4 ft tall) from lodging due to high wind speed, the peripheral jute plants (round the field) need to be tied together by taking 4-5 jute plants in a consecutive manner.
- Monitor pest and disease incidences and take appropriate plant protection measures.
- Present weather condition is congenial for **Stem rot** infestation. Spray of Mancozeb @ 2gm/L Water

#### Rice Aus

- **Stage:**Seedbed
- Take appropriate action for preparation of seedbed for Aus paddy. Prepare the seedbed in high land and also make arrangements for draining out of water and also advised for community based seedbed preparation.
- Construct 40-50 cm. drain in between two seedbeds. This will be used for draining out extra water, irrigation also apply fertilizer/insecticide as and when necessary.
- Advise to use BRRI recommended varieties of seed. If required, provide proper treatment of seeds so that there will be less chance of diseases. Advise to sow 80-100gm healthy sprouted seed per square meter seed bed.
- Close monitoring is required so that birds should not take away the seed from the seed bed. After 4-5 days of seed germination, it is better to maintain water level 2-3 cm in seed bed so that it can control the weeds and seed damages due to birds.

- If the seedbed becomes yellow, apply urea at the rate of 283 gm per decimal. Apply 400 gm gypsum per decimal if the seedlings are still not recovered after application of urea.

### **Vegetable**

- Because of increase in temperature, there is chance of sucking pest in vegetable crops. To control, application of Malathion 57EC/Dimathoate 40EC @ 1.0ml per litre of water is advised once a week.
- For control of fruit and shoot borer in brinjal under present weather condition, it is advised to apply Cypermethrin 10EC @ 0.5ml/litre or Emamectin Benzoate 5 SP @1.0g/litre or Deltamethrin 2.5EC @ 1.0ml/litre or Diazinon 60EC@ 1.0ml/litre water.
- Monitoring is advised for infestation of leaf hopper in okra during present weather condition. Spraying of Imidacloprid @ 0.5ml/litre or Cypermethrin 10EC @ 1.0ml/litre of water is recommended for control of leaf hopper.
- Apply Irrigation.

### **Horticultural**

- The prevailing weather conditions are favorable for the incidence of fruit fly in mango. Farmers are advised to install 32 Pheromon traps /acre to control the fruit fly.
- There are chances of termite attack in the standing horticultural crops. Hence, to control, apply Chlorpyrephos 20 EC or Fipronil 5 SC @ 2.0 ml/litre for termites.
- It is advised to provide mechanical support in banana and papaya plants to prevent lodging due to gusty wind. Harvest the matured and undamaged banana bunches and papaya fruits under the present weather condition and spray Copper oxychloride @ 3 g per litre of water for control of fungal diseases.
- Apply Irrigation.

### **Livestock**

- Give anthelmintic drugs.
- Use naphthalene or turpentine oil to reduce mosquitoes.
- Feed mineral mixture to increase immunity.
- Give enough cold water to drink.
- Keep the cattle in the safest place to protect them from storms, rain, and lightning.
- Keep enough ventilation in cowsheds.
- Keep the cowshed neat and clean.

### **Poultry**

- Vaccinate if not vaccinated against Ranikhet, cholera, duck plague.
- Remove affected poultry if disease occurs.
- Use clean water or glucose saline in more heat.
- Keep the poultry shed clean and dry.

### **Fishery**

- Maintain pond depth of 1-1.5 m.

- Apply fertilizers (per day- Urea 6gm, TSP 4gm per decimal).
- Give quality food according to the quantity of fish at a specific time and place every day.
- Making your fish food, maintain the percentage of proteins and other ingredients as per the formula.
- Observe the fish for getting fed.
- Monitor the growth of fish and disease by sampling every 15 days.
- If there were fish diseases or less growth, contact immediately the nearest Upazila fisheries office.

### **Khulna Region (Districts: Khulna, Satkhira, Bagerhat and Narail)**

#### **Jute**

- **Stage:**Vegetative
- It is advised to keep jute field clean and weed free to avoid infestation from insect pests and diseases.
- Keep the drain and irrigation channel weed free and clean to avoid excess water to stand in the plot at growing stages.
- The prevailing weather conditions are congenial for incidence of Field cricket in Jute field. Farmers are advised to spray Chlorpyrephos 20EC @ 2.0 ml/liter water to control insect.
- There is chance of attack of Jute Yellow mite at this stage of Jute crop. Spray Sulphur (Thiovit 80WG) @ 3.5g/liter water.
- At this stage of crop, there is a chance of Jute hairy caterpillar and Jute semi looper attack.To control pest farmers are advised to hand pick the egg mass and destroy them by burning or in kerosinized water. In case of severe attack spray Diazinon 60EC @ 1.0ml/liter of water.
- Present weather conditions and at this stage of crop, the incidence of Seedling blight and Stem rot may be seen in the Jute field. To control this pest spray Mancozeb (Dithane M45/Indofil M45) @ 2g/litre of water on fair weather. All the plant protection measure should be taken at clear & sunny days.
- Farmers are advise for 3rd weeding, mulching and simultaneous thinning at 40-50 DAS. Uproot comparatively under growth plants during this time.
- To protect deshi jute crop (>4 ft tall) from lodging due to high wind speed, the peripheral jute plants (round the field) need to be tied together by taking 4-5 jute plants in a consecutive manner.
- Monitor pest and disease incidences and take appropriate plant protection measures.

#### **Rice Aus**

- **Stage:**Seedbed
- Take appropriate action for preparation of seedbed for Aus paddy. Prepare the seedbed in high land and also make arrangements for draining out of water and also advised for community based seedbed preparation.
- Construct 40-50 cm. drain in between two seedbeds. This will be used for draining out extra water, irrigation also apply fertilizer/insecticide as and when necessary.
- Advise to use BRRI recommended varieties of seed. If required, provide proper treatment of seeds so that there will be less chance of diseases. Advise to sow 80-100gm healthy sprouted seed per square meter seed bed.

- Close monitoring is required so that birds should not take away the seed from the seed bed. After 4-5 days of seed germination, it is better to maintain water level 2-3 cm in seed bed so that it can control the weeds and seed damages due to birds.
- If the seedbed becomes yellow, apply urea at the rate of 283 gm per decimal. Apply 400 gm gypsum per decimal if the seedlings are still not recovered after application of urea.

### **Rice Boro**

- **Stage:Heading**
- Arrange proper solarisation within the row by stirring the plants after each 2 rows.
- Where seedlings are 90-110 days old apply last top dressing with urea and potash.
- There is a chance of attack of insect/pests like, Rice Stem borer, Rice hispa, etc. Constant monitoring is required for its level of incidences. If noticed, collect the adults using hand net & destroy them by burying under soil or by burning. Also apply Carbofuran 5g @10kg / ha. or Diazinon 10g @17kg/ha. for its control.
- There is chance of Blast and brown spot attack due to light fog and raised temperature. . Apply Trooper 6.0g or Nativo 6.0g/litre water twice in 10-15 days.
- Keep the field and irrigation channel weed free.
- Maintain 2-5 cm land water level.
- Apply irrigation.
- Present weather condition is congenial for **Gall midge** infestation. Apply Carbofuran@10kg per ha.

### **Vegetable**

- Because of increase in temperature, there is chance of sucking pest in vegetable crops. To control, application of Malathion 57EC/Dimathoate 40EC @ 1.0ml per litre of water is advised once a week.
- For control of fruit and shoot borer in brinjal under present weather condition, it is advised to apply Cypermethrin 10EC @ 0.5ml/litre or Emamectin Benzoate 5 SP @1.0g/litre or Deltamethrin 2.5EC @ 1.0ml/litre or Diazinon 60EC@ 1.0ml/litre water.
- Monitoring is advised for infestation of leaf hopper in okra during present weather condition. Spraying of Imidacloprid @ 0.5ml/litre or Cypermethrin 10EC @ 1.0ml/litre of water is recommended for control of leaf hopper.
- Apply Irrigation.

### **Horticultural**

- The prevailing weather conditions are favorable for the incidence of fruit fly in mango. Farmers are advised to install 32 Pheromon traps /acre to control the fruit fly.
- There are chances of termite attack in the standing horticultural crops. Hence, to control, apply Chlorpyrephos 20 EC or Fipronil 5 SC @ 2.0 ml/litre for termites.
- It is advised to provide mechanical support in banana and papaya plants to prevent lodging due to gusty wind. Harvest the matured and undamaged banana bunches and papaya fruits under the present weather condition and spray Copper oxychloride @ 3 g per litre of water for control of fungal diseases.
- Apply Irrigation.

## Livestock

- Give anthelmintic drugs.
- Use naphthalene or turpentine oil to reduce mosquitoes.
- Feed mineral mixture to increase immunity.
- Give enough cold water to drink.
- Keep the cattle in the safest place to protect them from storms, rain, and lightning.
- Keep enough ventilation in cowsheds.
- Keep the cowshed neat and clean.

## Poultry

- Vaccinate if not vaccinated against Ranikhet, cholera, duck plague.
- Remove affected poultry if disease occurs.
- Use clean water or glucose saline in more heat.
- Keep the poultry shed clean and dry.

## Fishery

- Maintain pond depth of 1-1.5 m.
- Apply fertilizers (per day- Urea 6gm, TSP 4gm per decimal).
- Give quality food according to the quantity of fish at a specific time and place every day.
- Making your fish food, maintain the percentage of proteins and other ingredients as per the formula.
- Observe the fish for getting fed.
- Monitor the growth of fish and disease by sampling every 15 days.
- If there were fish diseases or less growth, contact immediately the nearest Upazila fisheries office.

**Mymensingh Region (Districts: Mymensingh, Kishoregonj, Jamalpur, Netrokona, Sherpur)**

## Jute

- **Stage:**Vegetative
- It is advised to keep jute field clean and weed free to avoid infestation from insect pests and diseases.
- Keep the drain and irrigation channel weed free and clean to avoid excess water to stand in the plot at growing stages.
- The prevailing weather conditions are congenial for incidence of Field cricket in Jute field. Farmers are advised to spray Chlorpyrephos 20EC @ 2.0 ml/liter water to control insect.
- There is chance of attack of Jute Yellow mite at this stage of Jute crop. Spray Sulphur (Thiovit 80WG) @ 3.5g/liter water.
- At this stage of crop, there is a chance of Jute hairy caterpillar and Jute semi looper attack.To control pest farmers are advised to hand pick the egg mass and destroy them by burning or in kerosinized water. In case of severe attack spray Diazinon 60EC @ 1.0ml/liter of water.



- Present weather conditions and at this stage of crop, the incidence of Seedling blight and Stem rot may be seen in the Jute field. To control this pest spray Mancozeb (Dithane M45/Indofil M45) @ 2g/litre of water on fair weather. All the plant protection measure should be taken at clear & sunny days.
- Farmers are advise for 3rd weeding, mulching and simultaneous thinning at 40-50 DAS. Uproot comparatively under growth plants during this time.
- To protect deshi jute crop (>4 ft tall) from lodging due to high wind speed, the peripheral jute plants (round the field) need to be tied together by taking 4-5 jute plants in a consecutive manner.
- Monitor pest and disease incidences and take appropriate plant protection measures.

### **Rice Aus**

- **Stage:Seedbed**
- Take appropriate action for preparation of seedbed for Aus paddy. Prepare the seedbed in high land and also make arrangements for draining out of water and also advised for community based seedbed preparation.
- Construct 40-50 cm. drain in between two seedbeds. This will be used for draining out extra water, irrigation also apply fertilizer/insecticide as and when necessary.
- Advise to use BRRI recommended varieties of seed. If required, provide proper treatment of seeds so that there will be less chance of diseases. Advise to sow 80-100gm healthy sprouted seed per square meter seed bed.
- Close monitoring is required so that birds should not take away the seed from the seed bed. After 4-5 days of seed germination, it is better to maintain water level 2-3 cm in seed bed so that it can control the weeds and seed damages due to birds.
- If the seedbed becomes yellow, apply urea at the rate of 283 gm per decimal. Apply 400 gm gypsum per decimal if the seedlings are still not recovered after application of urea.

### **Vegetable**

- Because of increase in temperature, there is chance of sucking pest in vegetable crops. To control, application of Malathion 57EC/Dimathoate 40EC @ 1.0ml per litre of water is advised once a week.
- For control of fruit and shoot borer in brinjal under present weather condition, it is advised to apply Cypermethrin 10EC @ 0.5ml/litre or Emamectin Benzoate 5 SP @1.0g/litre or Deltamethrin 2.5EC @ 1.0ml/litre or Diazinon 60EC@ 1.0ml/litre water.
- Monitoring is advised for infestation of leaf hopper in okra during present weather condition. Spraying of Imidacloprid @ 0.5ml/litre or Cypermethrin 10EC @ 1.0ml/litre of water is recommended for control of leaf hopper.
- Apply Irrigation.

### **Horticultural**

- The prevailing weather conditions are favorable for the incidence of fruit fly in mango. Farmers are advised to install 32 Pheromon traps /acre to control the fruit fly.
- There are chances of termite attack in the standing horticultural crops. Hence, to control, apply Chlorpyrephos 20 EC or Fipronil 5 SC @ 2.0 ml/litre for termites.

- It is advised to provide mechanical support in banana and papaya plants to prevent lodging due to gusty wind. Harvest the matured and undamaged banana bunches and papaya fruits under the present weather condition and spray Copper oxychloride @ 3 g per litre of water for control of fungal diseases.
- Apply Irrigation.

### **Livestock**

- Give anthelmintic drugs.
- Use naphthalene or turpentine oil to reduce mosquitoes.
- Feed mineral mixture to increase immunity.
- Give enough cold water to drink.
- Keep the cattle in the safest place to protect them from storms, rain, and lightning.
- Keep enough ventilation in cowsheds.
- Keep the cowshed neat and clean.

### **Poultry**

- Vaccinate if not vaccinated against Ranikhet, cholera, duck plague.
- Remove affected poultry if disease occurs.
- Use clean water or glucose saline in more heat.
- Keep the poultry shed clean and dry.

### **Fishery**

- Maintain pond depth of 1-1.5 m.
- Apply fertilizers (per day- Urea 6gm, TSP 4gm per decimal).
- Give quality food according to the quantity of fish at a specific time and place every day.
- Making your fish food, maintain the percentage of proteins and other ingredients as per the formula.
- Observe the fish for getting fed.
- Monitor the growth of fish and disease by sampling every 15 days.
- If there were fish diseases or less growth, contact immediately the nearest Upazila fisheries office.